

**Reference Plan to Accompany  
By-Law No. 9165 Closing a  
Portion of Road Shown Dedicated  
on Plan 1268, District Lot 343,  
Cariboo District.**

Pursuant to Section 120 of the Land Title Act and  
Section 40 of the Community Charter  
Integrated survey area No. 39 Prince George, BC,  
NAD83 (CSRS) 4.0.0.BC.1  
BCGS 93G.097



The intended plot size of this plan is 432mm in width by 559mm in height (C size)  
when plotted at a scale of 1:500.

All distances are in metres and decimals thereof.

Grid bearings are derived from observations between geodetic control  
monuments 85H1077(672238) and 85H1216(89771) and are referred to  
the central meridian of UTM Zone10 North (123° west longitude).

The UTM coordinates and estimated absolute accuracy achieved have  
been derived from mascot published coordinates and standard deviations  
for geodetic control monuments 85H1077(672238) and 85H1216(89771)

This plan shows horizontal ground-level distances unless otherwise  
specified. To compute grid distances, multiply ground-level distances by  
the average combined factor of 0.9995157 which has been derived from  
control monument 85H1077(672238).

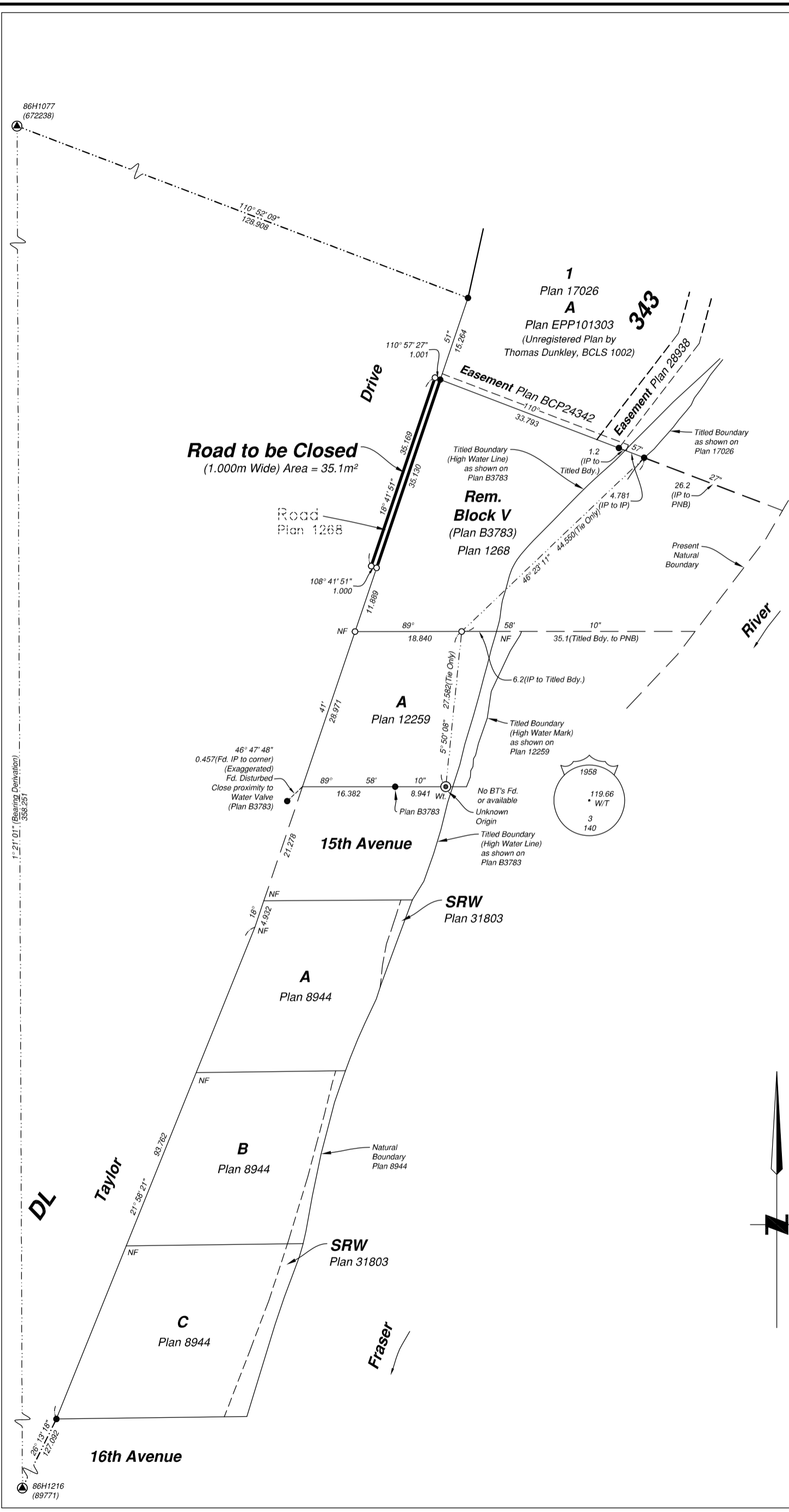
Note:  
This plan shows one or more witness posts which are not set  
on the true corner(s).

Some posts are exaggerated for clarity.

**Legend**

Found	Placed	Description
▲	○	Control Monument
●	○	Standard Iron Post
●	○	Standard Concrete Post
CSF		Combined Scale Factor
EAA		Estimated Absolute Accuracy
NB		Natural Boundary
PNB		Present Natural Boundary
Bdy.		Boundary

Georeferencing Positions UTM Coordinates, Zone 10, NAD 83 (CSRS), 4.0.0.BC.1				
Station	Northing	Easting	EAA	CSF
85H1077	5973738.90	517774.61	0.10	0.9995157
85H1216	5973380.92	517766.17	0.10	0.9995160



The field survey represented by this plan was  
completed on the 22nd day of March, 2021.

Scott A. Maguire, BCLS 903

This plan lies within the Regional District of Fraser-Fort George

File: 21026-RC

**KOEHLER LAND SURVEYING INC.**  
1698 Lyon Street South  
Prince George, BC V2N 1T3  
Tel: (250) 614-9703

86H1216  
(89771)

1:21.01" (Bearing Derivation)  
368.251