

CITY OF PRINCE GEORGE
BYLAW NO. 9165, 2020

A Bylaw of the City of Prince George to permanently close a portion of road located adjacent to 1450 Taylor Drive and to remove its road dedication for the purpose of future disposal of the lands.

WHEREAS the Council of the City of Prince George deems it desirable that an approximate 35.1 m² (square metres) of road dedicated on Plan 1268, as shown on Reference Plan EPP110034, adjacent to the property legally described as Block V, District Lot 343, Cariboo District, Plan 1268, Except Plans 12259, 13410 and 17026 be closed to traffic, and that the road dedication thereof be removed;

AND WHEREAS, in accordance with section 40 of the *Community Charter*, notice of intention to adopt this Bylaw has been delivered, posted and published, and an opportunity has been provided for persons who consider they are affected by this Bylaw to make representations to Council;

NOW THEREFORE the Council of the City of Prince George, in open meeting assembled, **ENACTS AS FOLLOWS:**

1. That the portion of road dedicated on Plan 1268, adjacent to the property legally described as Block V, District Lot 343, Cariboo District, Plan 1268, Except Plans 12259, 13410 and 17026 as shown outlined in bold black on the Reference Plan EPP110034, attached hereto as Appendix "A" and forming part of this Bylaw, is closed to traffic.
2. That the portion of road dedicated on Plan 1268, adjacent to the property legally described as Block V, District Lot 343, Cariboo District, Plan 1268, Except Plans 12259, 13410 and 17026 as shown outlined in bold black on the Reference Plan EPP110034, attached hereto as Appendix "A" and forming part of this Bylaw, is removed.
3. The Mayor and Corporate Officer are hereby empowered to do all things necessary to give effect to this Bylaw.
4. This Bylaw shall come into full force and take effect upon its adoption and shall be filed with the Registrar of the applicable Land Title Office.
5. This Bylaw may be cited for all purposes as "City of Prince George 1450 Taylor Drive Road Closure Bylaw No. 9165, 2020".

READ A FIRST TIME THIS _____ DAY OF _____, **2021.**

READ A SECOND TIME THIS _____ DAY OF _____, **2021.**

First two readings passed by a _____ decision of Members of City Council present and eligible to vote.

READ A THIRD TIME THIS DAY OF , 2021.

Third reading passed by a decision of Members of City Council present and eligible to vote.

Certified correct as passed third reading this day of , 2021.

CORPORATE OFFICER OF
THE CITY OF PRINCE GEORGE

APPROVED BY THE MINISTER OF TRANSPORTATION AND INFRASTRUCTURE PURSUANT TO THE PROVISIONS OF SECTION 41(3) OF THE *COMMUNITY CHARTER*.

THIS DAY OF ,2021.

for MINISTER OF TRANSPORTATION
AND INFRASTRUCTURE

ADOPTED THIS DAY OF , 2021,

BY A DECISION OF ALL MEMBERS OF CITY COUNCIL PRESENT AND ELIGIBLE TO VOTE.

MAYOR

CORPORATE OFFICER

**Reference Plan to Accompany
By-Law No. 9165 Closing a
Portion of Road Shown Dedicated
on Plan 1268, District Lot 343,
Cariboo District.**

Pursuant to Section 120 of the Land Title Act and
Section 40 of the Community Charter
Integrated survey area No. 39 Prince George, BC,
NAD83 (CSRS) 4.0.0.BC.1
BCGS 93G.097



The intended plot size of this plan is 432mm in width by 559mm in height (C size)
when plotted at a scale of 1:500.

All distances are in metres and decimals thereof.

Grid bearings are derived from observations between geodetic control
monuments 85H1077(672238) and 85H1216(89771) and are referred to
the central meridian of UTM Zone10 North (123° west longitude).

The UTM coordinates and estimated absolute accuracy achieved have
been derived from masco published coordinates and standard deviations
for geodetic control monuments 85H1077(672238) and 85H1216(89771)

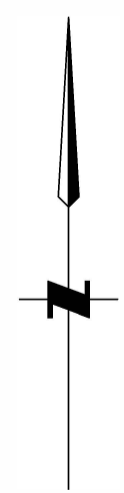
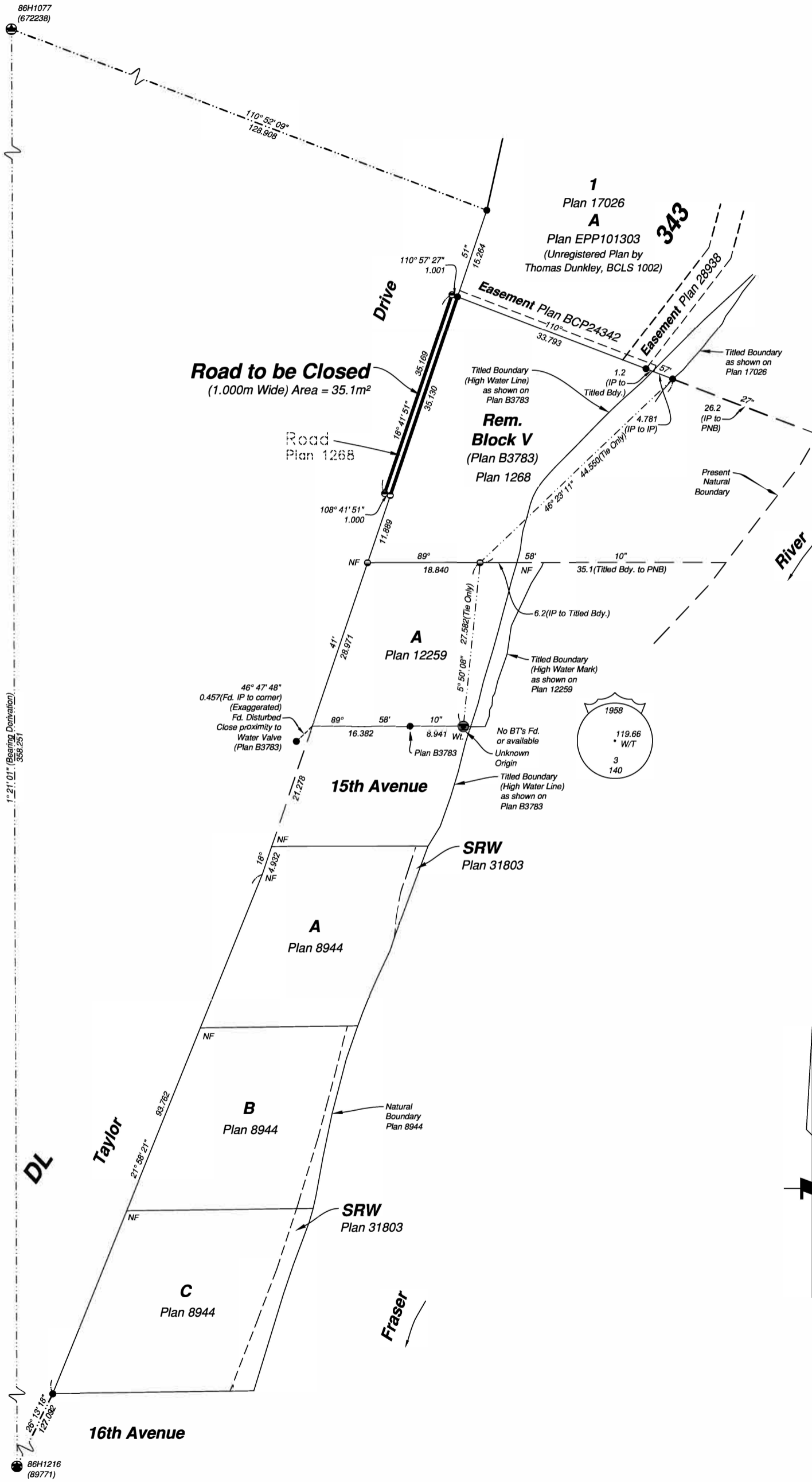
This plan shows horizontal ground-level distances unless otherwise
specified. To compute grid distances, multiply ground-level distances by
the average combined factor of 0.9995157 which has been derived from
control monument 85H1077(672238).

Note:
This plan shows one or more witness posts which are not set
on the true corner(s).
Some posts are exaggerated for clarity.

Legend

Symbols		Description
Found	Placed	
●	●	Control Monument
●	●	Standard Iron Post
●	●	Standard Concrete Post
CSF		Combined Scale Factor
EAA		Estimated Absolute Accuracy
NB		Natural Boundary
PNB		Present Natural Boundary
Bdy.		Boundary

Georeferencing Positions UTM Coordinates, Zone 10, NAD 83 (CSRS), 4.0.0.BC.1				
Station	Northing	Easting	EAA	CSF
85H1077	5973738.90	517774.61	0.10	0.9995157
85H1216	5973380.92	517766.17	0.10	0.9995160



The field survey represented by this plan was
completed on the 22nd day of March, 2021.
Scott A. Maguire, BCLS 903
This plan lies within the Regional District of Fraser-Fort George

File: 21026-RC
KOEHLER LAND SURVEYING INC.
 1698 Lyon Street South
 Prince George, BC V2N 1T3
 Tel: (250) 614-9703