

Reference Plan of;
1: Block V, Plan 1268, Except
Plans 12259, 13410 and 17026,
2: That part of Closed Road as
shown on Plan EPP110034
Both in District Lot 343,
Cariboo District.

Pursuant to Section 100(1)(b) of the Land Title Act

Integrated survey area No. 39 Prince George, BC,
 NAD83 (CSRS) 4.0.0.BC.1
 BCGS 93G.097



The intended plot size of this plan is 432mm in width by 559mm in height (C size) when plotted at a scale of 1:500.

All distances are in metres and decimals thereof.

Grid bearings are derived from observations between geodetic control monuments 85H1077(672238) and 85H1216(89771) and are referred to the central meridian of UTM Zone10 North (123° west longitude).

The UTM coordinates and estimated absolute accuracy achieved have been derived from mascot published coordinates and standard deviations for geodetic control monuments 85H1077(672238) and 85H1216(89771)

This plan shows horizontal ground-level distances unless otherwise specified. To compute grid distances, multiply ground-level distances by the average combined factor of 0.9995157 which has been derived from control monument 85H1077(672238).

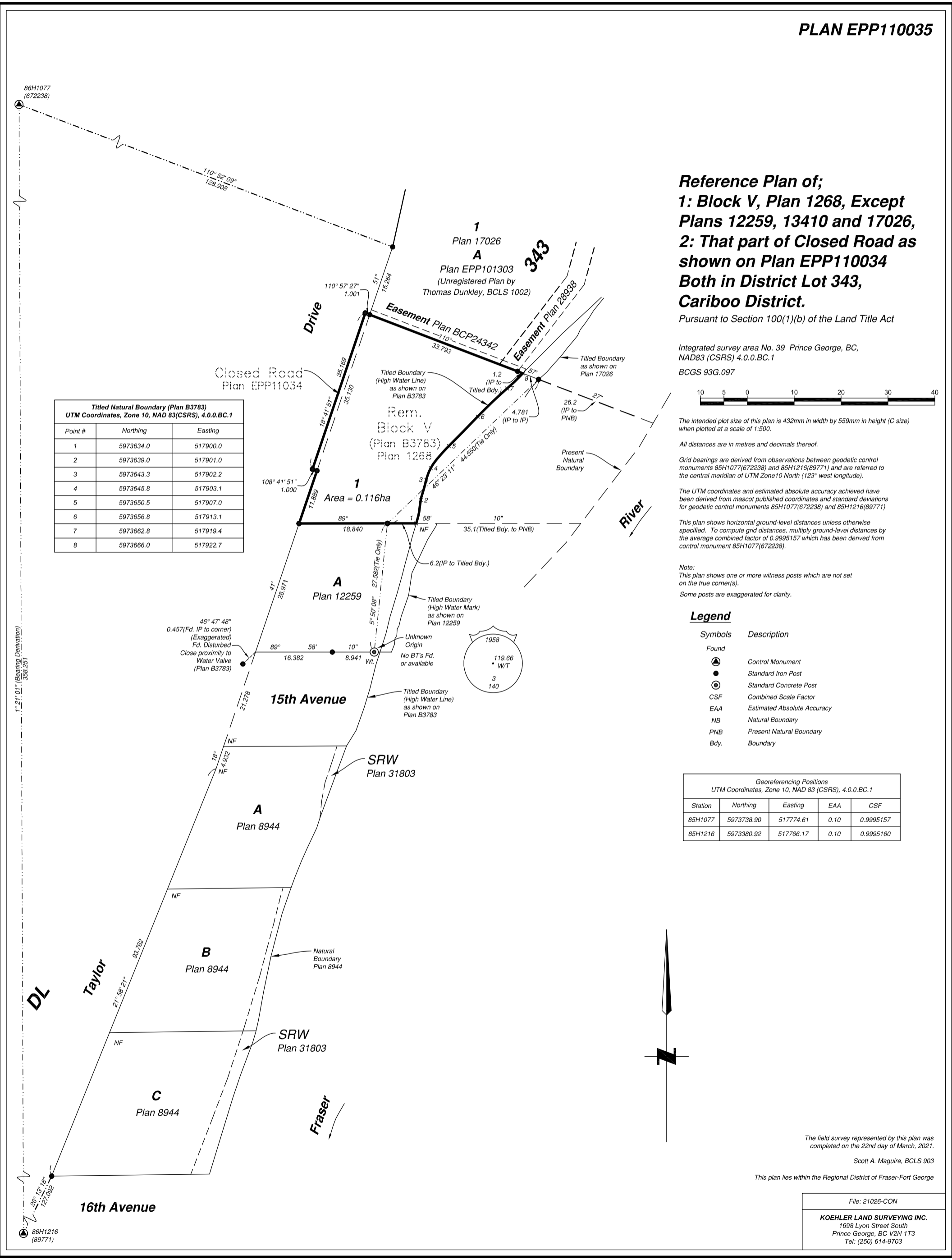
Note:
 This plan shows one or more witness posts which are not set on the true corner(s).
 Some posts are exaggerated for clarity.

Legend

Symbols	Description
Found	
Control Monument	Control Monument
Standard Iron Post	Standard Iron Post
Standard Concrete Post	Standard Concrete Post
CSF	Combined Scale Factor
EAA	Estimated Absolute Accuracy
NB	Natural Boundary
PNB	Present Natural Boundary
Bdy.	Boundary

Georeferencing Positions				
UTM Coordinates, Zone 10, NAD 83 (CSRS), 4.0.0.BC.1				
Station	Northing	Easting	EAA	CSF
85H1077	5973738.90	517774.61	0.10	0.9995157
85H1216	5973380.92	517766.17	0.10	0.9995160

Titled Natural Boundary (Plan B3783)		
UTM Coordinates, Zone 10, NAD 83(CSRS), 4.0.0.BC.1		
Point #	Northing	Easting
1	5973634.0	517900.0
2	5973639.0	517901.0
3	5973643.3	517902.2
4	5973645.8	517903.1
5	5973650.5	517907.0
6	5973656.8	517913.1
7	5973662.8	517919.4
8	5973666.0	517922.7



The field survey represented by this plan was completed on the 22nd day of March, 2021.

Scott A. Maguire, BCLS 903

This plan lies within the Regional District of Fraser-Fort George

File: 21026-CON

KOEHLER LAND SURVEYING INC.
 1698 Lyon Street South
 Prince George, BC V2N 1T3
 Tel: (250) 614-9703