

SUBDIVISION PLAN

of Lot E and Lot F Plan EPP95372 and Closed Road Plan EPP107847 all in District Lot 343 Cariboo District

Pursuant to Section 67 of the Land Title Act.

This plan lies within Integrated Survey Area No. 39 Prince George, BC NAD83 (CSRS) 4.0.0.BC.1

BCGS 93G.097

SCALE:



The intended plot size of this plan is 560mm in width by 432mm in height (C size) when plotted at a scale of 1:250.

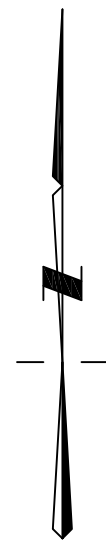
Grid bearings are derived from observations between geodetic control monuments 85H1054 and 85H1291.

The UTM coordinates and estimated absolute accuracy achieved are derived from the MASCOT published coordinates and standard deviations for geodetic control monuments 85H1054 and 85H1291.

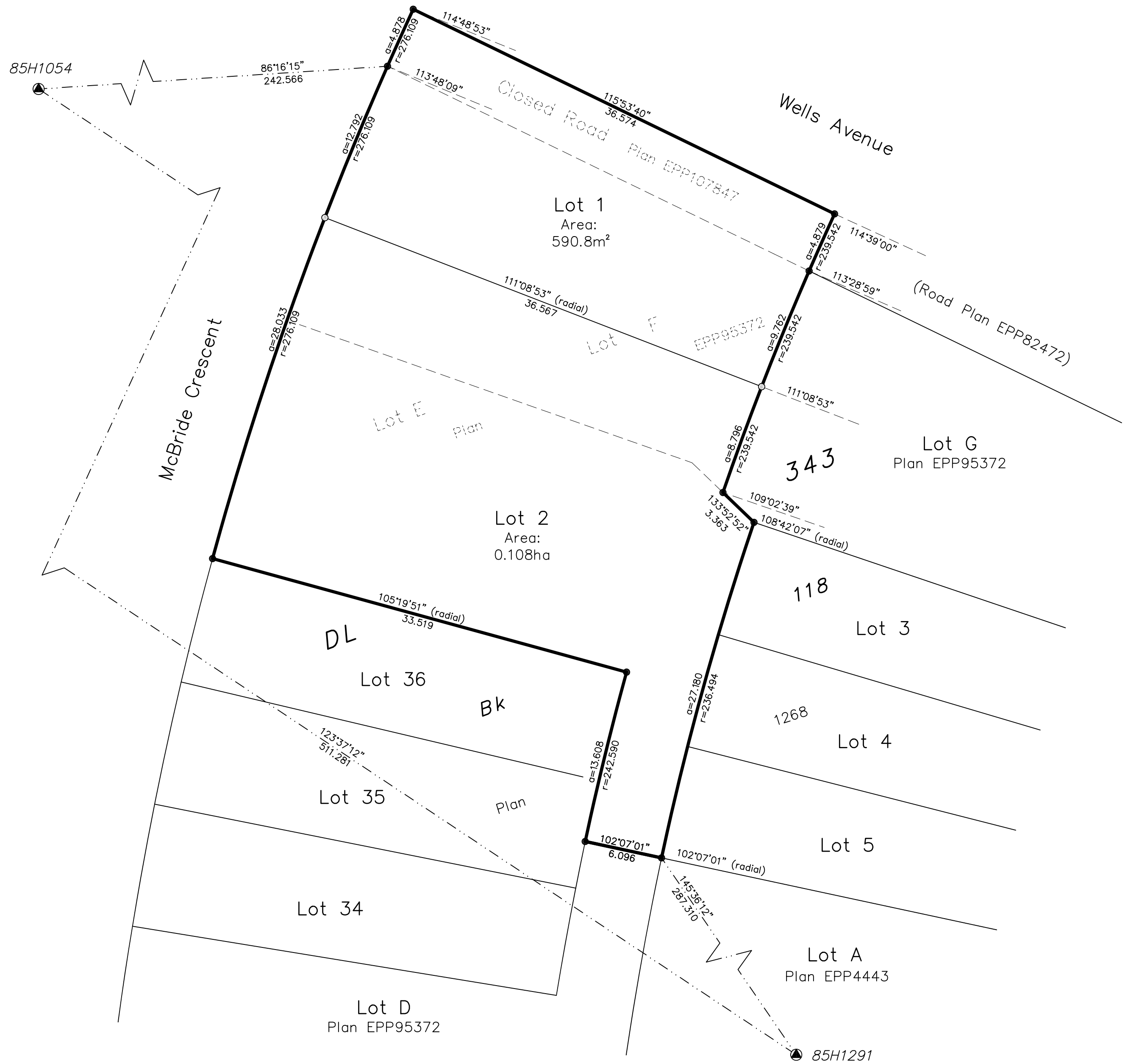
This plan shows horizontal ground level distances, unless otherwise specified. To compute grid distances, multiply ground level distances by the average combined factor of 0.999514. The average combined factor has been determined based on geodetic control monuments 85H1054 and 85H1291.

LEGEND:

Symbols		Description
Found	Placed	
		Control Monument
		Standard Iron Post
		Estimated Absolute Accuracy
		Block
		Number



UTM Zone 10 Coordinates (Published) NAD83 (CSRS) 4.0.0.BC.1			
Station (GCM)	Northing	Easting	EAA
85H1054	5974390.69	515345.68	0.10
85H1291	5974107.74	515771.23	0.10



This plan lies within the jurisdiction of the Approving Officer for the City of Prince George, File No. SD100660.

This plan lies within the Regional District of Fraser-Fort George.

The field survey represented by this plan was completed on the 12th day of January, 2021.

Darren Kent, BCLS 904

	Prince George	Smithers
	203-1300 1st Ave. Prince George, BC V2L 2Y3 250.640.2287	3750 1st Ave. PO Box 536 Smithers, BC V0J 2N0 250.847.3808
www.HBHLandSurveying.com		