

REFERENCE PLAN

to Accompany Bylaw No. 9183 of the City of Prince George to Close a Portion of Road Dedicated on Plan 1268 District Lot 343 Cariboo District

Pursuant to Section 120 of the Land Title Act and Section 40 of the Community Charter.

This plan lies within Integrated Survey Area No. 39 Prince George, BC NAD83 (CSRS) 4.0.0.BC.1

BCGS 93G.097

SCALE:



The intended plot size of this plan is 560mm in width by 432mm in height (C size) when plotted at a scale of 1:250.

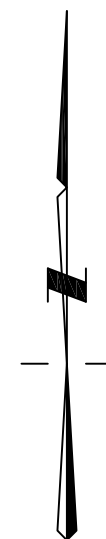
Grid bearings are derived from observations between geodetic control monuments 85H1054 and 85H1291.

The UTM coordinates and estimated absolute accuracy achieved are derived from the MASCOT published coordinates and standard deviations for geodetic control monuments 85H1054 and 85H1291.

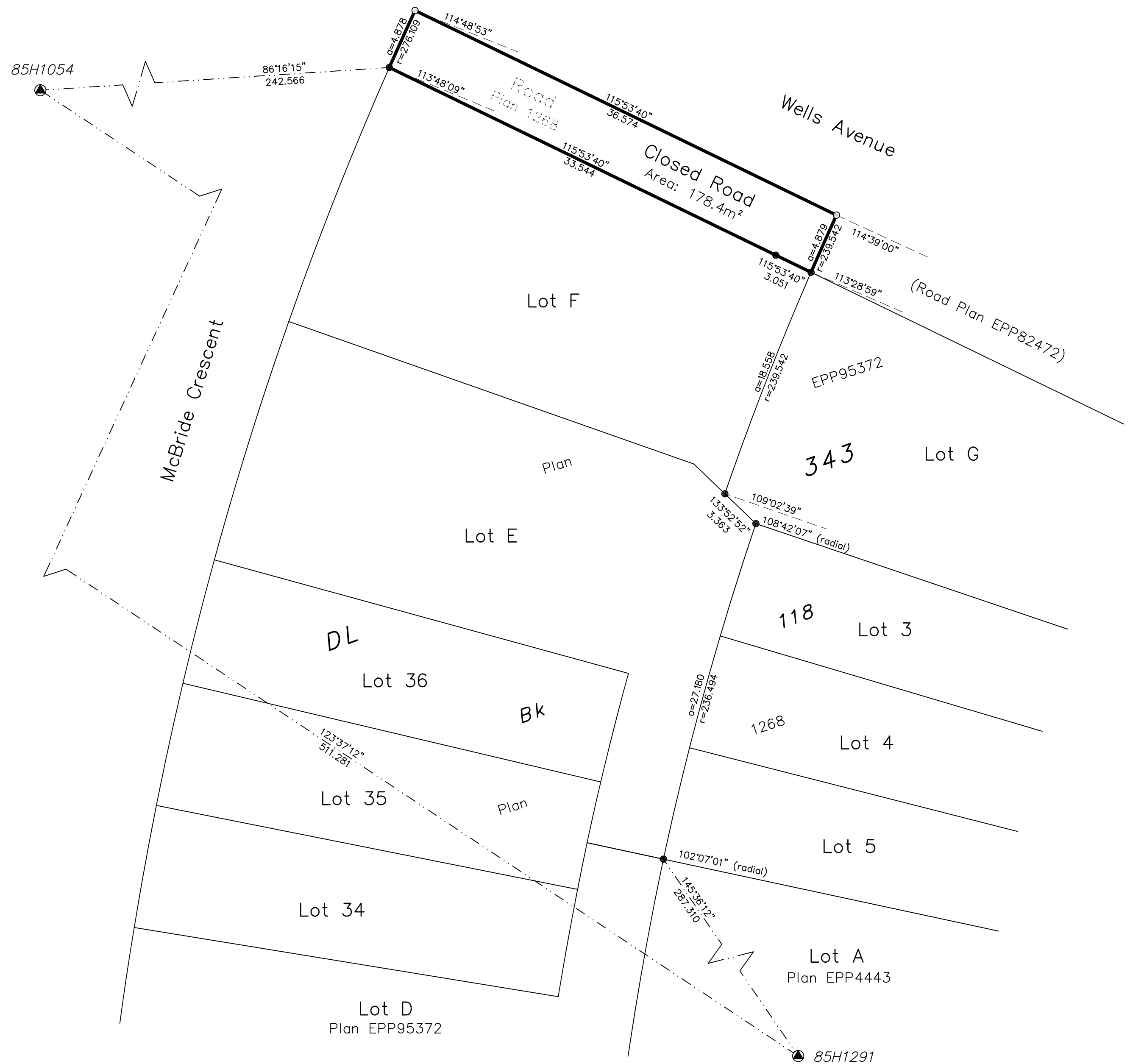
This plan shows horizontal ground level distances, unless otherwise specified. To compute grid distances, multiply ground level distances by the average combined factor of 0.999514. The average combined factor has been determined based on geodetic control monuments 85H1054 and 85H1291.

LEGEND:

Symbols		Description
Found	Placed	
●	○	Control Monument
●	○	Standard Iron Post
●	○	EAA
●	○	Estimated Absolute Accuracy
●	○	Bk
●	○	Block
●	○	No
●	○	Number



UTM Zone 10 Coordinates (Published) NAD83 (CSRS) 4.0.0.BC.1			
Station(GCM)	Northing	Easting	EAA
85H1054	5974390.69	515345.68	0.10
85H1291	5974107.74	515771.23	0.10



This plan lies within the Regional District of Fraser-Fort George.

The field survey represented by this plan was completed on the 12th day of January, 2021.

Darren Kent, BCLS 904