

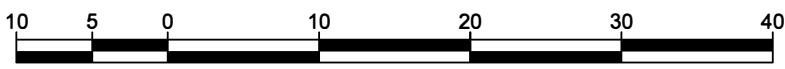
REFERENCE PLAN OF CONSOLIDATION OF CLOSED LANE, PLAN EPP105834;
 LOT A, PLAN 13671; AND THAT PART OF CLOSED ROAD ADJOINING LOT A,
 PLAN 13671, SHOWN ON PARCEL B ON PLAN B7767; ALL IN
 DISTRICT LOT 1429, CARIBOO DISTRICT.

PLAN EPP109685

PURSUANT TO SECTION 100(1)(b) OF THE LAND TITLE ACT

THIS PLAN LIES WITHIN INTEGRATED SURVEY AREA
 No. 39 PRINCE GEORGE, BC, NAD83 (CSRS) 4.0.0.BC.1

BCGS 93G.097



THE INTENDED PLOT SIZE OF THIS PLAN IS 432mm IN WIDTH BY
 560mm IN HEIGHT (C SIZE) WHEN PLOTTED AT A SCALE OF 1:500.

ALL DISTANCES ARE IN METRES AND DECIMALS THEREOF.

GRID BEARINGS ARE DERIVED FROM OBSERVATIONS BETWEEN
 GEODETIC CONTROL MONUMENTS 79H8449 AND 85H1097.

THE UTM COORDINATES AND ESTIMATED ABSOLUTE ACCURACY
 ACHIEVED HAVE BEEN DERIVED FROM MASCOT PUBLISHED
 COORDINATES AND STANDARD DEVIATIONS FOR GEODETIC
 CONTROL MONUMENT 79H8449.

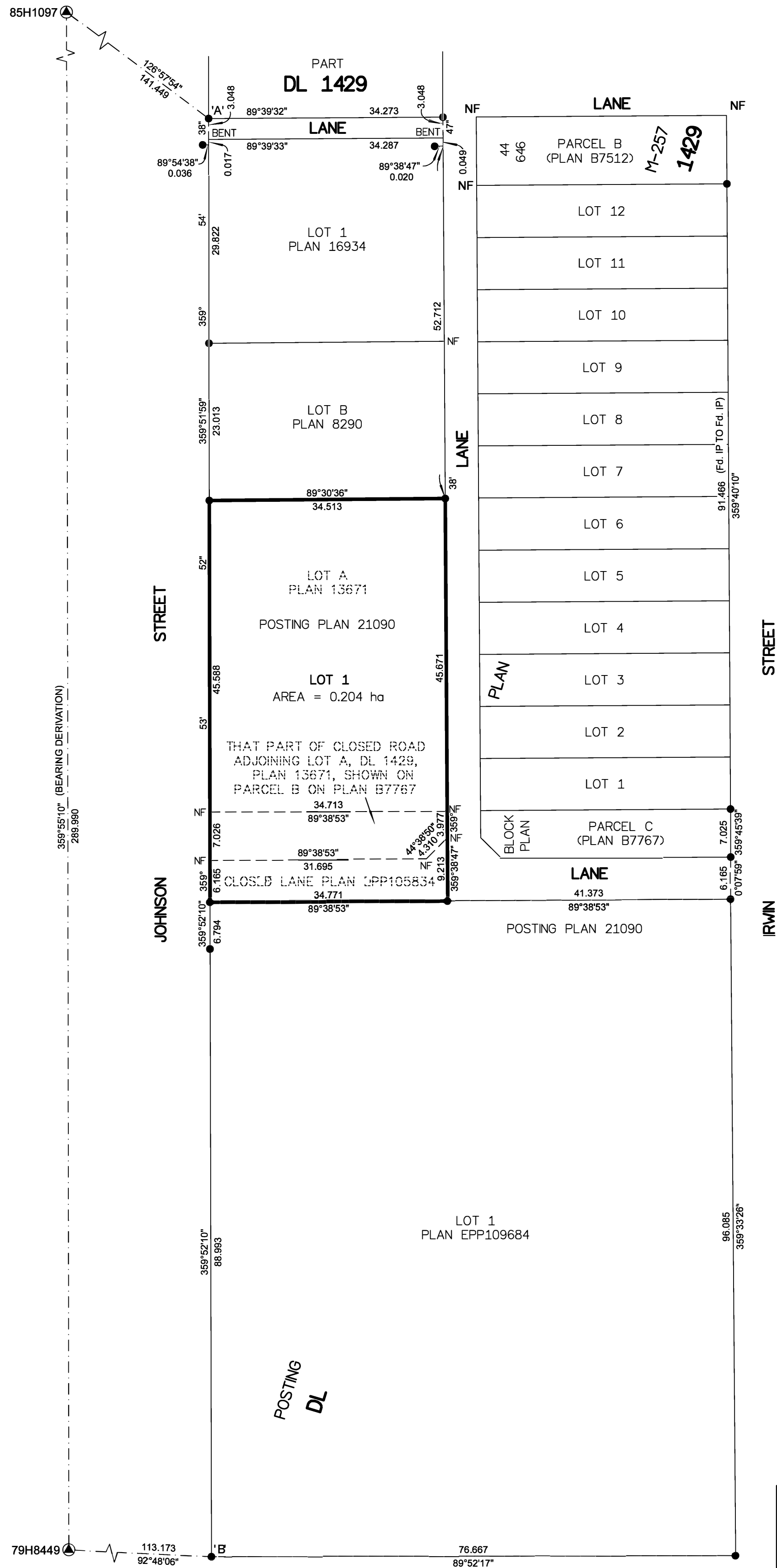
THIS PLAN SHOWS HORIZONTAL GROUND-LEVEL DISTANCES
 UNLESS OTHERWISE SPECIFIED. TO COMPUTE GRID DISTANCES,
 MULTIPLY GROUND-LEVEL DISTANCES BY THE AVERAGE
 COMBINED FACTOR OF 0.9995106 WHICH HAS BEEN DERIVED
 FROM GEODETIC CONTROL MONUMENTS 79H8449 AND 85H1097.

NOTE:
 SOME POSTS AND LINES ARE EXAGGERATED FOR CLARITY.

LEGEND

SYMBOLS		DESCRIPTION
FOUND	PLACED	
		CONTROL MONUMENT
		STANDARD IRON POST
EAA		ESTIMATED ABSOLUTE ACCURACY

GEOREFERENCING POSITIONS UTM COORDINATES, ZONE 10, NAD 83 (CSRS), 4.0.0.BC.1			
STATION	NORTHING	EASTING	EAA
Fd. IP 'A'	5973796.62	514482.31	0.09
Fd. IP 'B'	5973586.26	514482.73	0.09



INSPECTED UNDER THE LAND TITLE ACT ON 4th MARCH, 2021

THE FIELD SURVEY REPRESENTED BY THIS PLAN WAS COMPLETED
 ON THE 3rd DAY OF SEPTEMBER, 2020
 SHAUNA C. GOERTZEN, BCLS 798

THIS PLAN LIES WITHIN THE REGIONAL DISTRICT OF FRASER-FORT GEORGE.

McElhanney
 McELHANNEY ASSOCIATES
 LAND SURVEYING LTD.
 Suite 12
 556 North Nechako Road
 Prince George BC
 Canada V2K 1A1
 Tel 250 561 2229

File No. 2341-6756-CON-1