



March 9, 2021

Via Email: Melissa.Nitz@princegeorge.ca

Melissa Nitz
City of Prince George
1100 Patricia Boulevard
Prince George, BC V2L 3V9

Dear Ms. Nitz,

Subject: Summary of Public Consultation and Request for Concurrence for a TELUS Wireless Communications Facility

TELUS Site:	BC104272 - "Prince George – Milwaukee Way"
Proposed Location:	PID: 009-611-274 Address: 9136 Milwaukee Way, Prince George, BC V2N 5T3 Coordinates: 53.838648° N, 122.741372° W
Description:	64 metre self-support / wireless communications facility

Please be advised that TELUS has completed the public consultation process, following Innovation, Science and Economic Development Canada (ISED), formerly Industry Canada’s, CPC Procedures as it relates the proposed wireless antenna installation in the above noted subject line. TELUS is respectfully requesting, from the City of Prince George Council, concurrence for the proposal to build a telecommunication structure to provide improved wireless services for TELUS users in the immediate area. Enclosed please find evidence of the TELUS’ efforts regarding this public consultation process.

On January 14, 2021, an Information Package was submitted to the City of Prince George formalizing the initiation of the consultation process. Please see **Appendix 1: Information Package**.

On January 29, 2021, 32 notification packages were mailed to property owners within a radius of three times the tower height (approx. 192 metres) to advise them of the proposal. Please see **Appendix 2: Affidavit of Notification Package**.

On February 4, 2021 an advertisement ran in the Prince George Citizen newspaper, please see **Appendix 3: Newspaper Tear Sheet**.

On **March 8, 2021**, the consultation period ended. During the consultation period, one (1) comment of support was received, please see **Appendix 4: Comment and Response**.

TELUS is committed to providing reliable wireless service to the City of Prince George. Many community members across BC rely on wireless services to meet their personal, business and emergency needs. We

look forward to support from the City of Prince George to enhance improved services for the community, please find in **Appendix 5: Sample Resolution**, a sample resolution which may be used by Council to support this project. Should you require any additional information, please do not hesitate to contact us 604-620-0877 or by e-mail at tawny@cypresslandservices.com.

Tawny Verigin
Manager of Government Affairs

A handwritten signature in blue ink that reads "Tawny Verigin". The signature is written in a cursive, flowing style.

Cypress Land Services
Agents for TELUS

Appendix 1: Information Package



Cypress Land Services Inc.
Suite 1051 – 409 Granville Street
Vancouver, BC V6C 1T2

Telephone: 604.620.0877
Facsimile: 604.620.0876
Website : www.cypresslandservices.com

January 14, 2021

Via Email: kali.holahan@princegeorge.ca

Kali Holahan
City of Prince George
1100 Patricia Boulevard
Prince George, BC V2L 3V9,

Dear Ms. Holahan,

Subject: TELUS Communication Inc. (“TELUS”) Telecommunications Facility Proposal Information Package
PID: 009-611-274
Address: 9136 Milwaukee Way, Prince George, BC V2N 5T3
Coordinates: 53.838648° N, 122.741372° W
TELUS Site: BC104272 - “Prince George – Milwaukee Way”

Overview

Cypress Land Services Inc., in our capacity as agents to TELUS, is submitting this information package to formalize the consultation process related to the installation and operation of a telecommunications facility. The proposed site will improve wireless services to the immediate area.

Proposed Site

The subject property is located at 9136 Milwaukee Way, Prince George, BC. The premise is zoned M2 General Industrial and is currently used as a truck storage, sales, and salvage yard. It is proposed to construct a 64 metre self-support tower in the south-west corner of the property to improve telecommunications services within a few kilometres. Please see **Schedule A: Tower Site Location**.

Rationale for Site Selection

TELUS seeks to maintain and improve high quality, dependable network services. In order to improve network performance, TELUS is seeking to add the proposed communications installation to improve service to areas in the southern portion Prince George.

The proposed site is a result of many considerations. Existing structures, including towers, were initially reviewed during the site selection process. After careful examination, it has been determined there are no viable existing structures in the area that would be suitable for the operations of TELUS' network equipment. The proposed location is considered to be appropriate given the installation will be located on an industrial property, surrounded by other industrial lots. The proposed tower may have sufficient space and loading capacity for additional antennas should another carrier wish to install equipment to support their network requirements at this location dependent upon the type of equipment.

Tower Proposal Details

TELUS is proposing to install a 64 metre self-support tower with 18 antennas and a lightning rod on the top of the tower as well as an equipment compound enclosing the base of the tower and equipment shelter, occupying an area of 15.0 metres by 20.0 metres. TELUS has completed preliminary design plans, please see **Schedule B: Preliminary Plans**. These preliminary design plans are subject to final engineered design, land survey and approval of Transport Canada. Transport Canada approval may require tower lighting and/or marking.

Consultation Process

It is our understanding that Prince George does not have an adopted Telecommunications policy. Innovation, Science and Economic Development Canada (ISED), formerly Industry Canada, requires all proponents to consult with the local land use authority and public, notwithstanding that ISED has exclusive jurisdiction in the licensing of telecommunication sites, such as the proposed tower. Following ISED's requirements, TELUS would like to initiate Default Public Consultation Process (as described in the Industry Canada circular, CPC-2-0-03, issue 5, commonly referred to as the "CPC"). Information on the "CPC" consultation process may be found on-line at: <http://www.ic.gc.ca/eic/site/smt-gst.nsf/eng/sf08777.html>.

In order to obtain comments, concerns or questions in regard to the proposed tower site, the CPC requires TELUS to send out notification packages to all properties located within three times the height of the proposed tower (approx. 192 metres). This comment period is a minimum of 30 days. We expect the public consultation process to commence at the end of January 2021.

At the conclusion of the consultation process, TELUS will prepare a summary of comments received from the community as well as the replies provided by TELUS. TELUS is requesting that, subsequent to the completed consultation process a letter or resolution of concurrence will be issued by Prince George.

Health and Safety

Health Canada's Safety Code 6 regulations are applicable to this, and all, telecommunications sites. Safety Code 6 seeks to limit the public's exposure to radiofrequency electromagnetic fields and ensures public safety. Additional information on health and safety may be found on-line at:

Health Canada:

http://www.hc-sc.gc.ca/ewh-semt/pubs/radiation/radio_guide-lignes_direct-eng.php

Concurrence Requirements

In order to complete the consultation process, TELUS will be requesting concurrence from the City in a form acceptable by ISED.

Conclusion

Please consider this information package as the official commencement of consultation with the City. TELUS is committed to working with the City and the community throughout the consultation process.

We look forward to working together during this process. Please do not hesitate to contact us by phone at 604-620-0877 or by email at tawny@cypresslandservices.com.

Thank you in advance for your assistance and consideration.

Sincerely,

CYPRESS LAND SERVICES

Agents for TELUS



Tawny Verigin

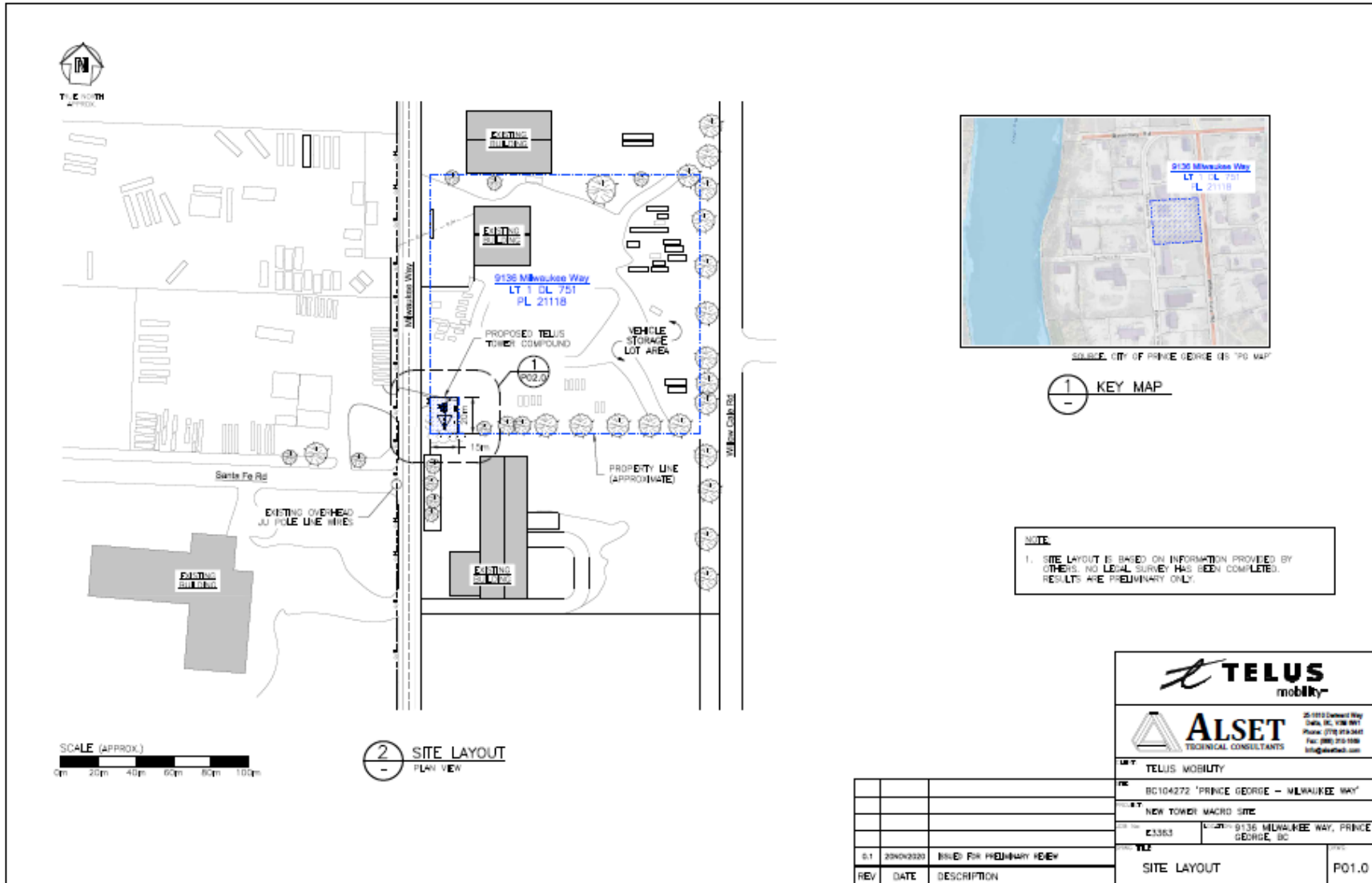
Manager of Government Affairs

cc: Cheryl Bilyk, TELUS

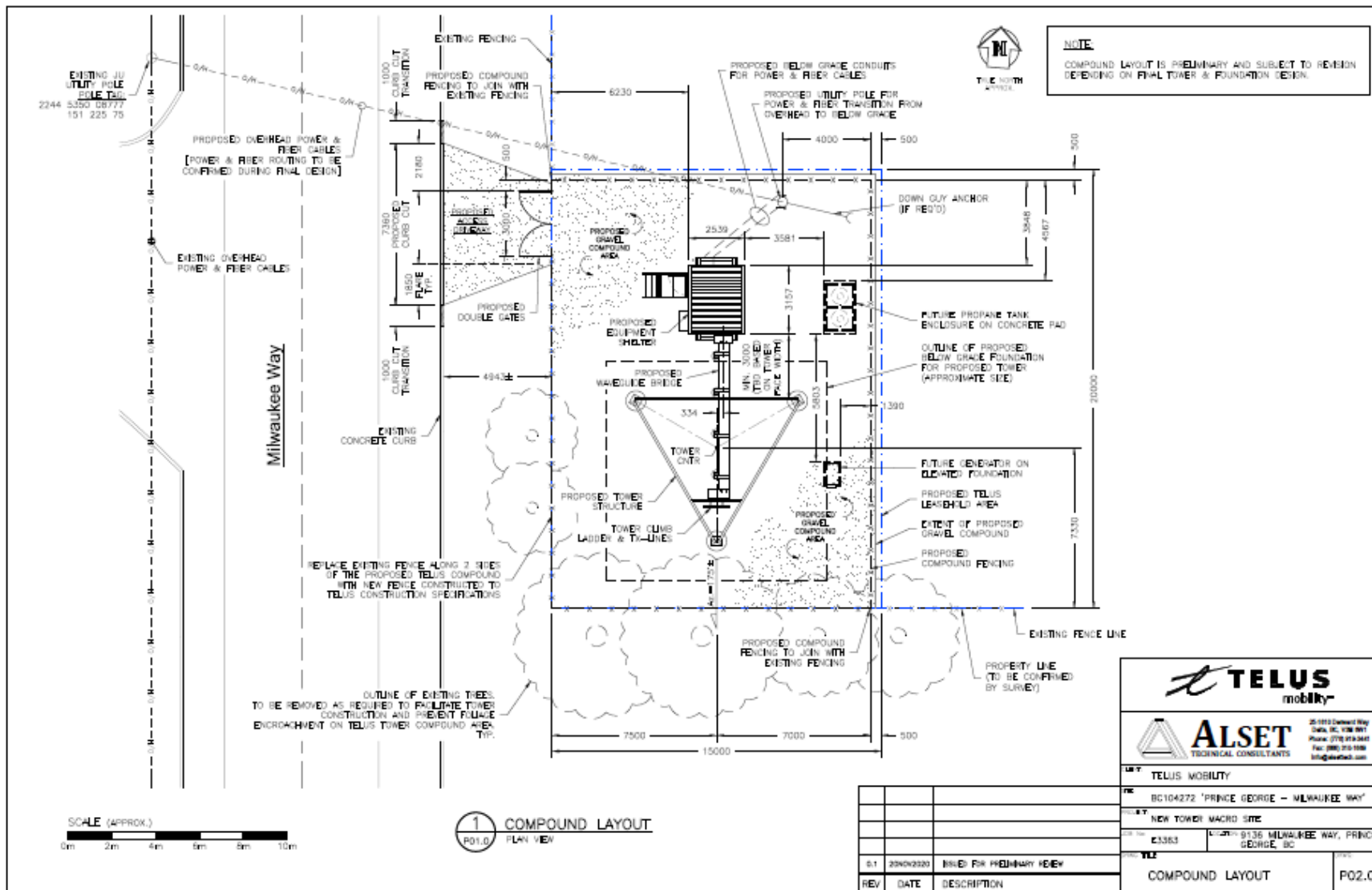
**SCHEDULE A
TOWER SITE LOCATION**



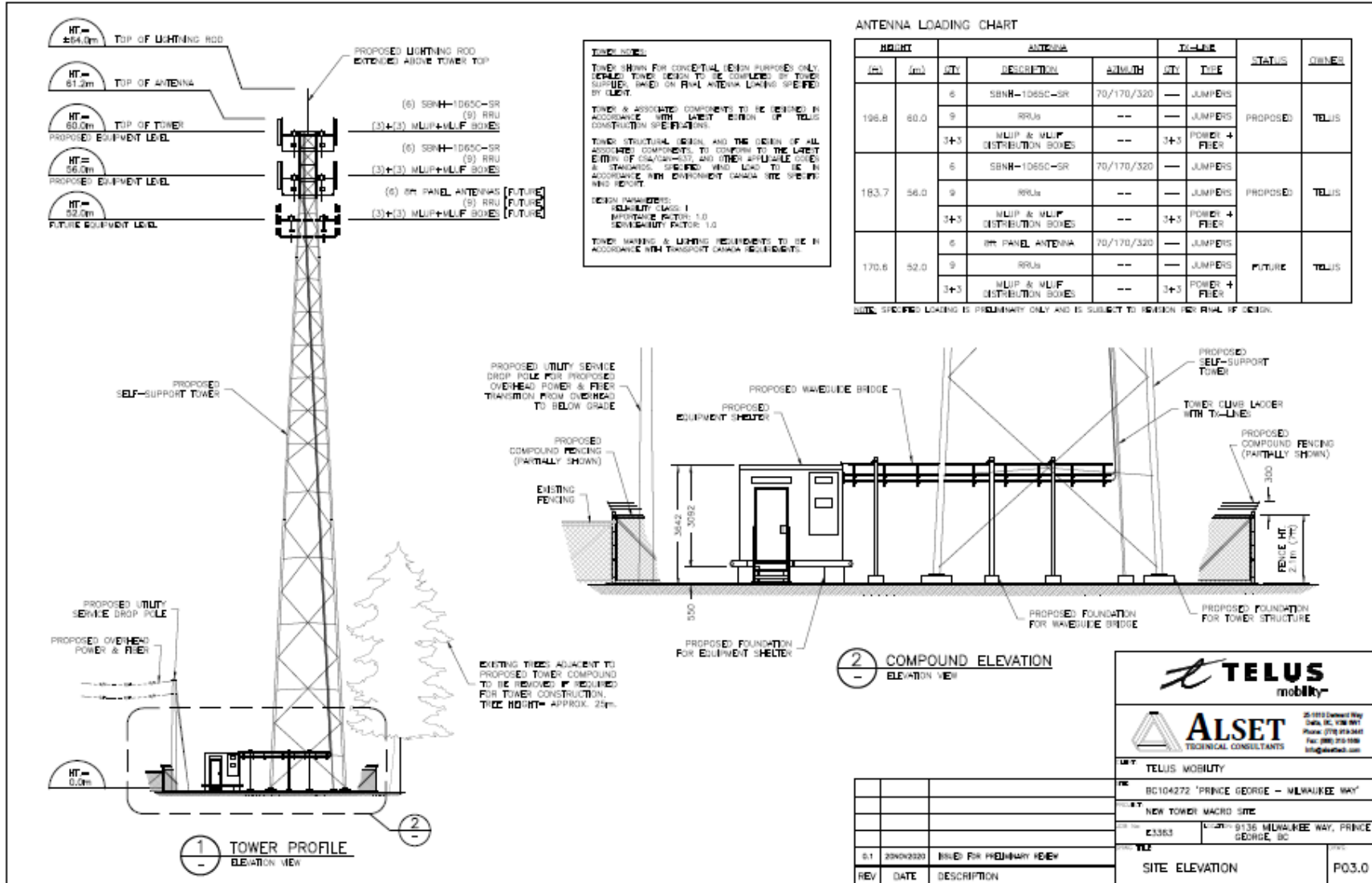
SCHEDULE B PRELIMINARY DESIGN PLANS – SITE LAYOUT



SCHEDULE B PRELIMINARY DESIGN PLANS – COMPOUND LAYOUT



SCHEDULE B PRELIMINARY DESIGN PLANS – TOWER PROFILE



Appendix 2: Affidavit of Notification Package

Affidavit of Cypress Land Services

I, Tawny Verigin, Manager of Government Affairs, in the City of Vancouver in the Province of B.C., make an Oath and say:

1. THAT I caused to be sent by regular mail, a notification letter, as included in Appendix A, to property owners, occupants and other recipients, as listed in Appendix B, on January 29, 2021.



Tawny Verigin, Manager of Government Affairs
Cypress Land Services

Sworn/Affirmed/Declared before me at the City of Vancouver, in the Province of B.C., this 29th day of January 2021.



(Commissioner's Signature)

A Commissioner for Taking Affidavits for the Province of B.C.

James Shaw
A Commissioner for Taking Affidavits
For British Columbia
Cypress Land Services Inc.
1051 - 409 Granville Street
Vancouver, BC V6C 1T2
Tel: 604-719-4469
Expires on: October 31, 2022

(Commissioner's stamp or printed name and expiry date)

Appendix A: Notification Letter



Dear Owner/Occupant,

January 29, 2021

Please accept this notification regarding proposed TELUS Communications Inc. (“TELUS”) wireless service improvements in your community.

Subject: Telecommunications Facility Proposal
PID: 009-611-274
Address: 9136 Milwaukee Way, Prince George, BC V2N 5T3
Coordinates: 53.838648° N, 122.741372° W
TELUS Site: BC104272 - “Prince George – Milwaukee Way”

What is TELUS Proposing?

TELUS seeks to continue to provide high quality wireless telecommunications services to communities throughout British Columbia. Increasingly, communities depend on wireless voice, data and internet communications for business, personal enjoyment and personal security reasons. In order to ensure improved wireless services to Prince George, TELUS is proposing to add a telecommunications facility.

The new facility is proposed to be located 9136 Milwaukee Way, Prince George, BC. TELUS is proposing to construct a 64 metre self-support tower in the south-west corner of the property to improve telecommunications services within a few kilometres.

Regulatory Authority

Telecommunication providers are required by Innovation, Science, and Economic Development Canada (ISED), formerly Industry Canada, to consult with the local municipality and the general public regarding new installations. ISED does have exclusive jurisdiction over the approval and placement of telecommunications installations.

The consultation process will provide an opportunity for residents, stakeholders and landowners to obtain detailed information regarding the proposal and to provide comments for consideration. Any inquiries that are received as a result of this notification will be logged and submitted to the City of Prince George and ISED as part of our application for concurrence.

Local Municipality

The City of Prince George does not have a telecommunications consultation process to guide the consultation process. As such, ISED’s Client Procedures Circular CPC-2-0-03 (CPC) consultation process will be followed. This process requires all properties within three times the structure height be notified (in this instance those within approx. 192.0 metres). This notification is to provide the opportunity to obtain information regarding the proposal, ask questions and provide comments. The closing period for comments to be received by TELUS is **March 8, 2021**.

Location

The new facility is proposed to be located at 9136 Milwaukee Way, Prince George, BC at the coordinates 53.838648° N, -122.741372° W. The facility will be located in the south-west corner of the property. To confirm, there are no existing structures in the vicinity of the proposed tower to collocate antennas on. The proposed tower may have sufficient space and loading capacity for additional antennas should another carrier wish to install equipment to support their network requirements at this location dependent upon the type of equipment.



Safety Code 6

ISED requires all wireless carriers to operate in accordance with Health Canada's safety standards. TELUS attests that the installation described in this notification package will be installed and operated on an ongoing basis so as to comply with Health Canada's Safety Code 6, as may be amended from time to time.

Site Access

Access is via Milwaukee Way. Construction is expected to take approximately two months.

Environment

TELUS confirms that the installation is excluded from environmental assessment under the Canadian Environmental Assessment Act. Any municipal environmental regulations will be followed.

Transport Canada

The tower will be constructed to include aeronautical markings or lighting required by Transport Canada. Comments are pending.

Structural Considerations

TELUS confirms that the antenna structure described in this notification package will apply good engineering practices including, structural adequacy during construction.

General Information

General information relating to antenna systems is available on ISED's Spectrum Management and Telecommunications website: <http://www.ic.gc.ca/eic/site/ic-gc.nsf/eng/07422.html>.

Contacts:

TELUS

c/o Tawny Verigin of Cypress Land Services
Agents for TELUS
Suite 1051, 409 Granville Street, Vancouver, BC V6C 1T2
Phone: 1-855-301-1520
Fax: 604-620-0876
Email: publicconsultation@cypresslandservices.com

ISED

Northern British Columbia and Yukon District Office
280 Victoria Street, Room 203, Prince George BC V2L 4X3
Phone: 250-561-5291 or 1-800-667-3780
Fax: 250-561-5290
Email: ic.spectrumprincegeorge-princegeorgespectre.ic@canada.ca
(By appointment only)

City of Prince George

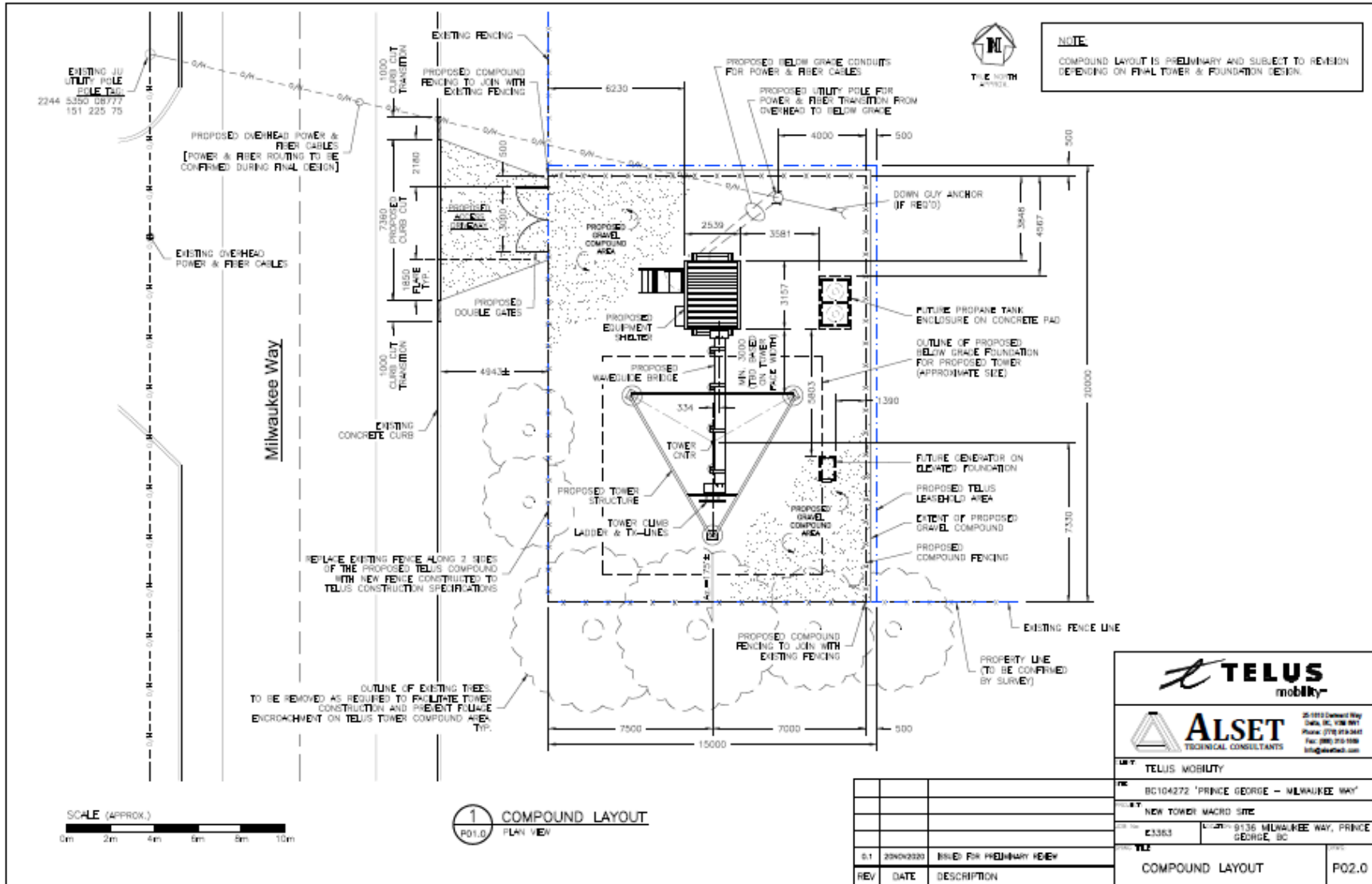
Melissa Nitz, Planner
Planning and Development
1100 Patricia Blvd, Prince George, BC V2L 3V9
Phone: 250-561-7600
Email: Melissa.Nitz@princegeorge.ca

If you have any specific questions regarding the proposal, please feel welcome to contact the above.

AERIAL MAP



PRELIMINARY DESIGN PLANS – COMPOUND LAYOUT



PRELIMINARY DESIGN PLANS – TOWER PROFILE

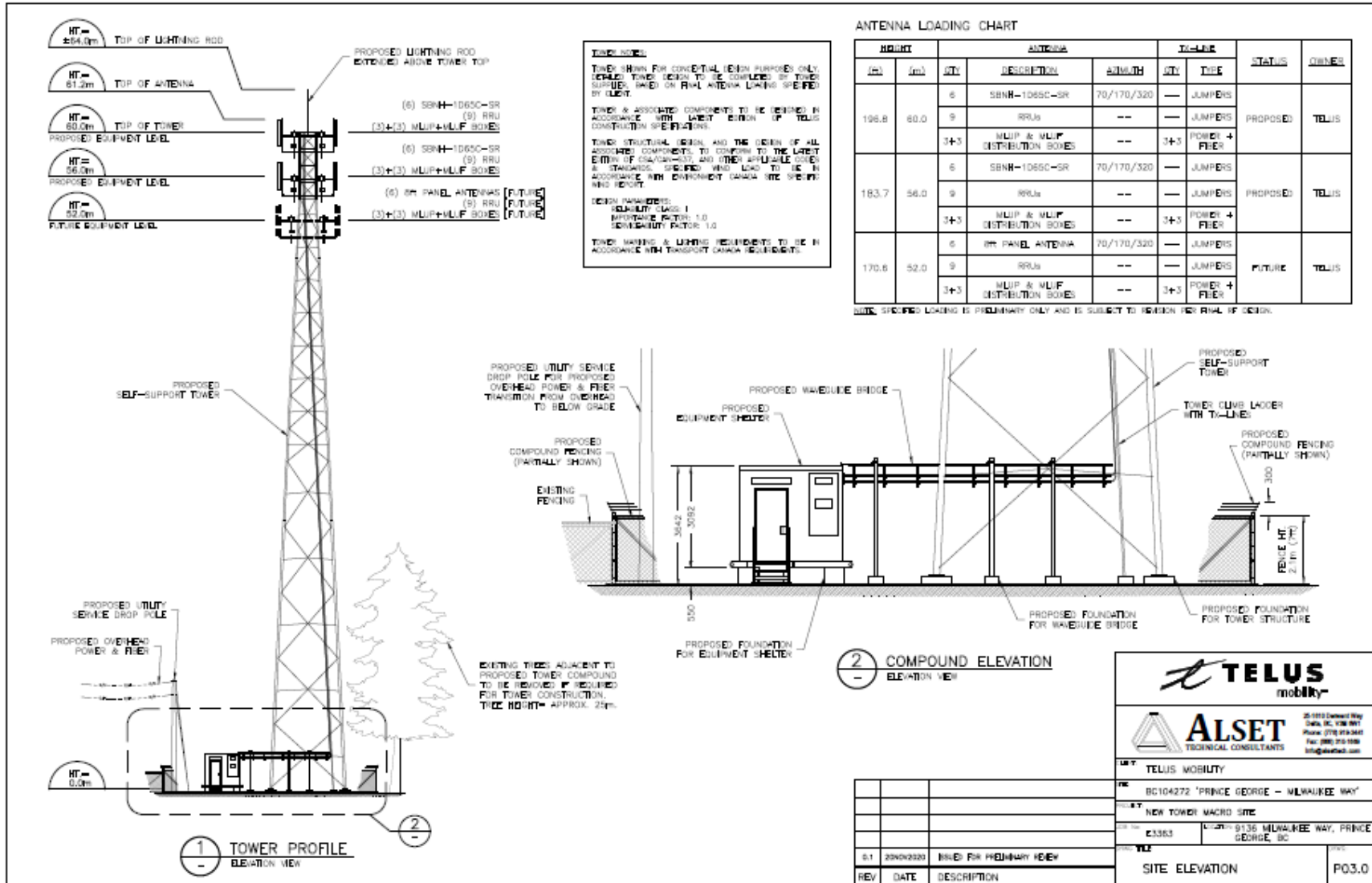


PHOTO-SIMULATION





COMMENT SHEET
TELECOMMUNICATIONS FACILITY PROPOSAL
PID: 009-611-274
ADDRESS: 9136 MILWAUKEE WAY, PRINCE GEORGE, BC V2N 5T3
COORDINATES: 53.838648° N, 122.741372° W
TELUS SITE: BC104272 - "PRINCE GEORGE – MILWAUKEE WAY"

1. Do you feel this is an appropriate location for the proposed facility?

- Yes
- No

Comments _____

2. Are you satisfied with the appearance / design of the proposed facility? If not, what changes would you suggest?

- Yes
- No

Comments _____

3. Additional Comments _____

Please provide your name and full mailing address if you would like to be informed about the status of this proposal. This information will not be used for marketing purposes; however, your comments will only be used by TELUS in satisfying ISED’s consultation requirements. The closing period for comments to be received by TELUS is **March 8, 2021**.

Name _____
 (Please print clearly)
 Email Address _____
 Mailing Address _____

TELUS c/o Cypress Land Services Inc.
Suite 1051, 409 Granville Street, Vancouver, BC V6C 1T2
Attention: Tawny Verigin, Manager of Government Affairs
Thank you for your input.

Appendix B: List of Property Owners, Occupants and Other Recipients

QUIETWOOD LOGGING LTD
9136 MILWAUKEE WAY
PRINCE GEORGE BC V2N 5T3

CARRIER LUMBER LTD
4722 CONTINENTAL WAY
PRINCE GEORGE BC V2N 5S5

ISED
NORTHERN BRITISH COLUMBIA AND YUKON
DISTRICT OFFICE
280 VICTORIA STREET, ROOM 203
PRINCE GEORGE BC V2L 4X3

0756287 BC LTD
505 4TH AVE
PRINCE GEORGE BC V2L 3H2

W G DAVIS & SONS TRUCKING LTD
1289 SANTA FE RD
PRINCE GEORGE BC V2N 5T5

CYPRESS LAND SERVICES
AGENTS FOR TELUS
SUITE 1051, 409 GRANVILLE STREET,
VANCOUVER, BC V6C 1T2

CHERYL LEE RYAN
2524 RIDGEVIEW DR
PRINCE GEORGE BC V2K 4A2

DOUBLE D LOGGING LTD
5365 BUCKHORN LAKE RD
PRINCE GEORGE BC V2N 6B4

TELUS
4535 CANADA WAY
BURNBAY, BC V5G 1J9
ATTN: CHERYL BILYK

REVOLUTION ENVIRONMENTAL SOLUTIONS
ACQUISITION
500-1100 BURLOAK DR
BURLINGTON ON L7L 6B2

MODSPACE FINANCIAL SERVICES CANADA
LTD
2300 NORTH PARK DR
BRAMPTON ON L6S 6C6

CITY OF PRINCE GEORGE
KALI HOLAHAN, PLANNER
1100 PATRICIA BLVD
PRINCE GEORGE, BC, V2L 3V9

0733250 BC LTD
4736 OLIVER AVE
PRINCE GEORGE BC V2M 6N1

DELBERT KEITH HART
13555 FERNDALE RD
PRINCE GEORGE BC V2K 5C9

OCCUPANT
9064 MILWAUKEE WAY
PRINCE GEORGE BC V2M 5T3

NORTH COUNTRY HOLDINGS LTD
95 TENTH ST
NANAIMO BC V9R 6Z5

SALEM CONTRACTING LTD
PO BOX 1025
HOUSTON BC V0J 1Z0

OCCUPANT
8958 MILWAUKEE WAY
PRINCE GEORGE BC V2N 5T3

0833984 BC LTD
9265 SUNSET PL
PRINCE GEORGE BC V2K 5A1

SALEM CONTRACTING LTD
9097 MILWAUKEE WAY
PRINCE GEORGE BC V2N 5T3

OCCUPANT
9203 ROCK ISLAND RD
PRINCE GEORGE BC V2N 5T4

INTERIOR WAREHOUSING LTD
2023 RIVER RD
PRINCE GEORGE BC V2L 5S8

OCCUPANT
1337/1381 SANTA FE RD
PRINCE GEORGE BC V2N 5T5

OCCUPANT
9215 ROCK ISLAND RD
PRINCE GEORGE BC V2N 5T4

OCCUPANT
#101 9368/#102 9368 MILWAUKEE WAY
PRINCE GEORGE BC V2N 5T3

OCCUPANT
9171 MILWAUKEE WAY
PRINCE GEORGE BC V2N 5T3

OCCUPANT
9239 ROCK ISLAND RD
PRINCE GEORGE BC V2N 5T4

OCCUPANT
9359 MILWAUKEE WAY
PRINCE GEORGE BC V2N 5T3

OCCUPANT
1336 BOUNDARY RD
PRINCE GEORGE BC V2N 5T2

OCCUPANT
9242/9284 MILWAUKEE WAY
PRINCE GEORGE BC V2N 5T3

**IMPORTANT INFORMATION ENCLOSED
REGARDING A PROPOSED
TELECOMMUNICATIONS FACILITY WITHIN
APPROX. 192 METRES OF A PROPERTY
YOU HAVE AN INTEREST IN**

**IMPORTANT INFORMATION ENCLOSED
REGARDING A PROPOSED
TELECOMMUNICATIONS FACILITY WITHIN
APPROX. 192 METRES OF A PROPERTY
YOU HAVE AN INTEREST IN**

**IMPORTANT INFORMATION ENCLOSED
REGARDING A PROPOSED
TELECOMMUNICATIONS FACILITY WITHIN
APPROX. 192 METRES OF A PROPERTY
YOU HAVE AN INTEREST IN**

**IMPORTANT INFORMATION ENCLOSED
REGARDING A PROPOSED
TELECOMMUNICATIONS FACILITY WITHIN
APPROX. 192 METRES OF A PROPERTY
YOU HAVE AN INTEREST IN**

**IMPORTANT INFORMATION ENCLOSED
REGARDING A PROPOSED
TELECOMMUNICATIONS FACILITY WITHIN
APPROX. 192 METRES OF A PROPERTY
YOU HAVE AN INTEREST IN**

**IMPORTANT INFORMATION ENCLOSED
REGARDING A PROPOSED
TELECOMMUNICATIONS FACILITY WITHIN
APPROX. 192 METRES OF A PROPERTY
YOU HAVE AN INTEREST IN**

Appendix C: Envelope



c/o Cypress Land Services Inc.
Suite 1051 – 409 Granville Street
Vancouver, BC V6C 1T2

**IMPORTANT INFORMATION ENCLOSED REGARDING A PROPOSED TELECOMMUNICATIONS FACILITY WITHIN
APPROX. 192 METRES OF A PROPERTY YOU HAVE AN INTEREST IN**

Appendix 3: Newspaper Tear Sheet

LEGALS

Legal/Public Notices

WAREHOUSE LIEN

Between ROBERTA MITCHELL or anyone related, with the belief of abandonment of the storage unit A19 located at AAA Self Storage 6700 Pacific Street, Prince George, BC V2N 6Y2. Belongings of ROBERTA MITCHELL 1420 Fraser Crescent, Prince George, BC V2M 3Y2 (778 983 0564) will be dispose the aforesaid property unless the person being notified takes possession and liability of the property within 14 days from the date of this publication, the Manager

WESLEY PERRIN CRIMINAL DEFENCE
 Tickets/Criminal Charges
 Quesnel - PG- FS James
 250-564-0564



Legal/Public Notices

COURT BAILIFF SALE
www.northcentralbailiffs.bc.ca

The Court Bailiff offers for sale by tender bid, interest in the following goods of the Judgement Debtor(s):

Matthew Hromatka also known as Matthew Gordon Wolfgang Hromatka, Matt Hromatka Contracting Ltd., pursuant to a Writ of Seizure and Sale, Registry No. S187476.

2008 Dodge RAM VIN# 3D7MX38A98G131260

Item(s) can be viewed at our **2706 Jasper St. & Ottawa St and 3rd Ave** compound(s) in Prince George. Go to www.northcentralbailiffs.bc.ca to view photographs. **Closing date February 28, 2021.** Highest or any other bid not necessarily accepted. Bidders are solely responsible for determining the make, model, year of manufacture, condition, quantities, sets and or usefulness of all items for tender. All items are sold on an "as is, where is" basis with no warranty given or implied. As vehicles have not been inspected, we are declaring that they may not be suitable for transportation and may not be compliant with the motor vehicle act. Sale is subject to cancellation or adjournment without notice. Terms of sale: Immediate payment in full by bank draft or cash only upon acceptance of successful bid. Call (250) 564-4900 for details.

North Central Bailiffs Ltd.
 Prince George Branch
 Court Bailiff Division
 Brandon Jacobsen / Court Bailiff

Legal/Public Notices

WAREHOUSEMAN'S LIEN ACT

Whereas the following are indebted to Ace Auto Wrecking Ltd., dba NC Ron's Towing, for towing and storage of personal property, and ought to have been paid, and are still unpaid, notice is hereby given that the said properties will be sold to pay the outstanding debt, plus costs of seizure, advertising and sale, one week from the date of this notice on the 11th day of February, 2021, at 1360 Foley Cres, Prince George, BC.

Name	Year/make	Model	VIN	Debt
Estate of Gale Cahoose	2012 Chevrolet	Silverado	1GCRKSE79CZ144066	5,467.04
Stephanie Ter Haar	1995 Chevrolet	2500 with camper	1GTGC29K6SE516200	2,098.16
Lincoln Neil Joseph-Shaw	1998 Dodge	Dakota	1B7GG22XXWS629360	2,094.96
Angela Humphrey	2002 Pontiac	Grand Prix	1G2WP52K52F289320	1,898.52
Robert McClelland	1996 GMC	Sonoma	1GTCS19X2TK513935	1,856.29
Bernice Vivian Provencal	2007 Dodge	Durango	1D8HB48P27F537497	1,835.17
Joseph Lemelin	2003 Dodge	Caravan	1D4GP44R3B2742024	1,729.60
Isaac Rush	2013 Dodge	Dart	1C3CDFBA9DD309107	1,686.25
Brett Pilon	2001 Honda	Civic	1HGM22131L813216	1,666.25
Edward Olson	2000 Toyota	Echo	JTDDBT1230V0015509	1,624.02
Gage Cunningham	2000 Chevrolet	Impala	2G1WF55K1Y9156557	1,602.90
Unknown	2006 Polaris	Sportsman	4XATN50A97A96	1,582.10
Maxime Begin	2003 Dodge	Dakota	1D7HG12X43S376875	1,560.67
Douglas Barnes	2008 Pontiac	Wave	KL2TW55647B074108	1,186.99
Kristy Giroux	1994 Dodge	Dakota	1B7GG23Y2RW106631	1,138.36
Keenan Dionne	1988 Ford	Motorhome	1FDKE30G7JHA89444	2,609.28

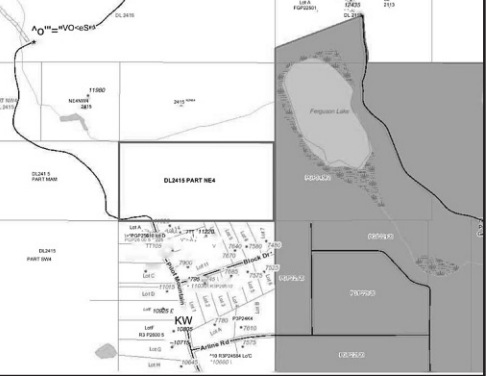
Highest or any bid not necessarily accepted. Viewing and bids may be submitted to 1360 Foley Cres, Prince George, BC. (250) 564-8444.

LAND ACT: NOTICE OF APPLICATION FOR CROWN LAND

Take notice that Global Union Investment Group from Vancouver, BC, has applied to the Ministry of Forests, Lands, Natural Resource Operations and Rural Development (FLNRORD), Omineca Region, for a Crown Grant for Residential Development purposes situated on Provincial Crown land located in the vicinity of Pilot Mountain.

The Lands File for this application is **7408246**. Written comments concerning this application should be directed to Tricia Klein, Land Officer, Omineca Region, FLNRORD, at 5th Floor 499 George Street, Prince George, BC V2L 1R5, or Tricia.Klein@gov.bc.ca Comments will be received by FLNRORD up to **March 15, 2021**. FLNRORD may not be able to consider comments received after this date. Please visit the website at <https://comment.nrs.gov.bc.ca/applications> more information.

Be advised that any response to this advertisement will be considered part of the public record. Access to these records requires the submission of a Freedom of Information (FOI) request. Visit <http://www.gov.bc.ca/freedomofinformation> to learn more about FOI submissions.



Notice of Proposed TELUS Telecommunications Facility

Description: As part of the public consultation process required by the Innovation, Science and Economic Development Canada (ISED), TELUS Communications Inc. is inviting the public to comment on a proposed telecommunications facility consisting of a 64.0 metre self-support tower and ancillary radio equipment in order to provide dependable wireless data and voice communication services to Prince George.

Proposed Tower Location: 9136 Milwaukee Way, Prince George, BC V2N 5T3 (PID: 009-611-274)

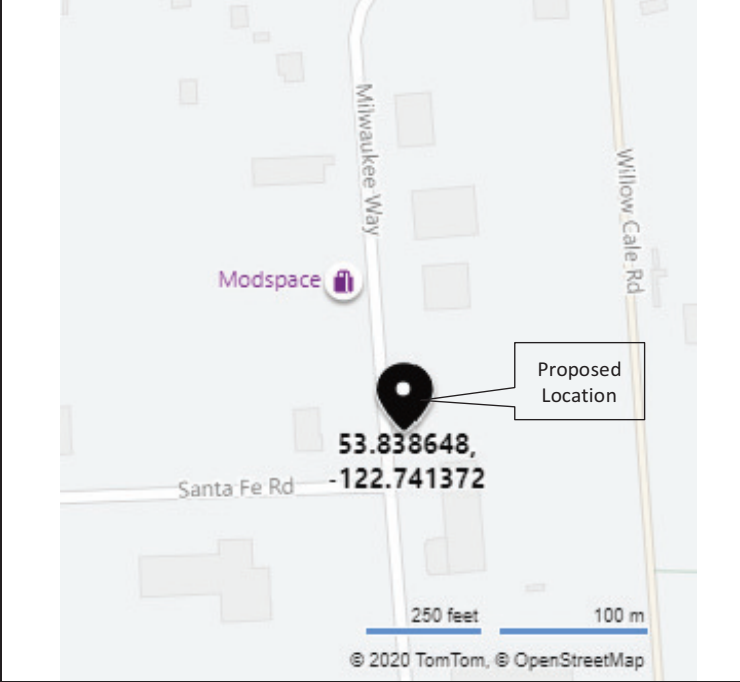
Coordinates: 53.838648° N, 122.741372° W

For More Information:
 Tawny Verigin
 c/o Cypress Land Services Inc.
 Agents to TELUS
 Suite 1051, 409 Granville Street
 Vancouver, BC V6C 1T2
 telephone: 1-855-301-1520
 e:publicconsultation@cypresslandservices.com

The public is welcome to comment on the proposal by the end of the business day on March 8, 2021 with respect to this matter.

TELUS Site: BC104272

Location Map



Hot Spot For Sale
 250-562-6666

CELEBRATE GOOD TIMES!

Share Birthdays, Anniversaries, and other occasions
 Call 250-562-6666 or email cls@pgcitizen.ca
 to place your announcement

Appendix 4: Comments and Response

Tawny Verigin

From: JASON SHYMANSKI Redacted
Sent: Tuesday, February 23, 2021 9:33 AM
To: Public Consultation
Subject: Telus Facility Proposal 9136 Milwaukee Way Prince George
Attachments: 20210222153757681.pdf

Follow Up Flag: Follow up
Flag Status: Completed

Hi Tawny,

Attached is the comment sheet that was sent to me in regards to the proposed telecommunications facility at 9136 Milwaukee way Prince George. We own the property (9242 Milwaukee Way) right beside the proposed Telus facility. We feel that this proposed facility will benefit the industrial park. Please keep me informed of the status of this proposal.

Thanks,

Jason Shymanski
0833984 BC LTD.



COMMENT SHEET
TELECOMMUNICATIONS FACILITY PROPOSAL
PID: 009-611-274

ADDRESS: 9136 MILWAUKEE WAY, PRINCE GEORGE, BC V2N 5T3
COORDINATES: 53.838648° N, 122.741372° W
TELUS SITE: BC104272 - "PRINCE GEORGE – MILWAUKEE WAY"

1. Do you feel this is an appropriate location for the proposed facility?

- Yes
- No

Comments We have no issue with the location of the proposed facility.

2. Are you satisfied with the appearance / design of the proposed facility? If not, what changes would you suggest?

- Yes
- No

Comments _____

3. Additional Comments Please keep me informed about the status of this proposal.

Please provide your name and full mailing address if you would like to be informed about the status of this proposal. This information will not be used for marketing purposes; however, your comments will only be used by TELUS in satisfying ISED's consultation requirements. The closing period for comments to be received by TELUS is **March 8, 2021.**

Name Jason Shymanski Owner of 0833984 BC Ltd (9242 Milwaukee Way)
(Please print clearly)

Email Address Redacted

Mailing Address 9265 Sunset Place, Prince George, B.C. V2K 5A1

TELUS c/o Cypress Land Services Inc.
Suite 1051, 409 Granville Street, Vancouver, BC V6C 1T2
Attention: Tawny Verigin, Manager of Government Affairs
Thank you for your input.

Tawny Verigin

From: Tawny Verigin
Sent: Tuesday, February 23, 2021 10:55 AM
To: JASON SHYMANSKI; Public Consultation
Subject: RE: Telus Facility Proposal 9136 Milwaukee Way Prince George

Hi Jason,

Thank you for providing us your comments of support regarding the proposed TELUS wireless communications facility at 9136 Milwaukee Way in Prince George.

We appreciate your feedback and will share your comments with the City of Prince George for consideration. Should you have additional comments, please respond within the next 21 days.

Sincerely,

Tawny Verigin
Manager of Government Affairs
Agent to TELUS Communications Inc.



Cypress Land Services Inc.
Suite 1051 – 409 Granville Street, Vancouver, BC V6C 1T2
Cell: 604.657.8307 | Office: 604.620.0877 | Fax: 604.620.0876
E: tawny@cypresslandservices.com | W: www.cypresslandservices.com

Disclaimer: The information transmitted is intended only for the addressee and may contain confidential, proprietary and/or privileged material. Any unauthorized review, distribution or other use of or the taking of any action in reliance upon this information is prohibited. If you received this in error, please contact the sender and delete or destroy this message and any copies.

From: JASON SHYMANSKI Redacted
Sent: Tuesday, February 23, 2021 9:33 AM
To: Public Consultation <publicconsultation@cypresslandservices.com>
Subject: Telus Facility Proposal 9136 Milwaukee Way Prince George

Hi Tawny,

Attached is the comment sheet that was sent to me in regards to the proposed telecommunications facility at 9136 Milwaukee way Prince George. We own the property (9242 Milwaukee Way) right beside the proposed Telus facility. We feel that this proposed facility will benefit the industrial park. Please keep me informed of the status of this proposal.

Thanks,

Jason Shymanski
0833984 BC LTD.

Appendix 5: Sample Resolution

Resolution

WHEREAS TELUS proposes to erect a wireless communications facility at the location of PID: 009-611-274, Address: 9136 Milwaukee Way, Prince George, BC V2N 5T3, Coordinates: 53.838648° N, 122.741372° W (TELUS Site: BC104272);

AND WHEREAS proponents of telecommunication towers are regulated by Innovation, Science and Economic Development Canada (ISED), formerly Industry Canada on behalf of the Government of Canada and as part of their approval, ISED requires proponents to consult with land use authorities as provided for in CPC-2-0-03;

AND WHEREAS TELUS has consulted with the CITY OF PRINCE GEORGE following the CPC-2-0-03 and the CITY OF PRINCE GEORGE planning staff have no objection to the proposed telecommunications tower;

AND WHEREAS TELUS has consulted with the public by notifying properties within three times the tower height, placed an advertisement in the local newspaper, and has provided a 30-day period for written public comment;

AND WHEREAS there are no significant land use issues identified by the consultation;

NOW THEREFORE BE IT RESOLVED THAT:

1. The Clerk be instructed to advise TELUS that:
 - a) TELUS has satisfactorily completed its consultation with the CITY OF PRINCE GEORGE;
 - b) The CITY OF PRINCE GEORGE is satisfied with TELUS's public consultation process and does not require any further consultation with the public; and
 - c) The CITY OF PRINCE GEORGE concurs with TELUS's proposal to construct a wireless telecommunications facility provided it is constructed substantially in accordance with the plans submitted to the CITY OF PRINCE GEORGE.