

REFERENCE PLAN TO ACCOMPANY BY-LAW No. 9195 (PRINCE GEORGE, BC),
TO CLOSE A PORTION OF LANE SHOWN DEDICATED ON PLAN 646,
DISTRICT LOT 1429, CARIBOO DISTRICT.

PLAN EPP105834

PURSUANT TO SECTION 120 OF THE LAND TITLE ACT
AND SECTION 40 OF THE COMMUNITY CHARTER.

THIS PLAN LIES WITHIN INTEGRATED SURVEY AREA
No. 39 PRINCE GEORGE, BC, NAD83 (CSRS) 4.0.0.BC.1

BCGS 93G.097



THE INTENDED PLOT SIZE OF THIS PLAN IS 432mm IN WIDTH BY
560mm IN HEIGHT (C SIZE) WHEN PLOTTED AT A SCALE OF 1:500.

ALL DISTANCES ARE IN METRES AND DECIMALS THEREOF.

GRID BEARINGS ARE DERIVED FROM OBSERVATIONS BETWEEN
GEODETTIC CONTROL MONUMENTS 79H8449 AND 85H1097.

THE UTM COORDINATES AND ESTIMATED ABSOLUTE ACCURACY
ACHIEVED HAVE BEEN DERIVED FROM MASCOT PUBLISHED
COORDINATES AND STANDARD DEVIATIONS FOR GEODETTIC
CONTROL MONUMENT 79H8449.

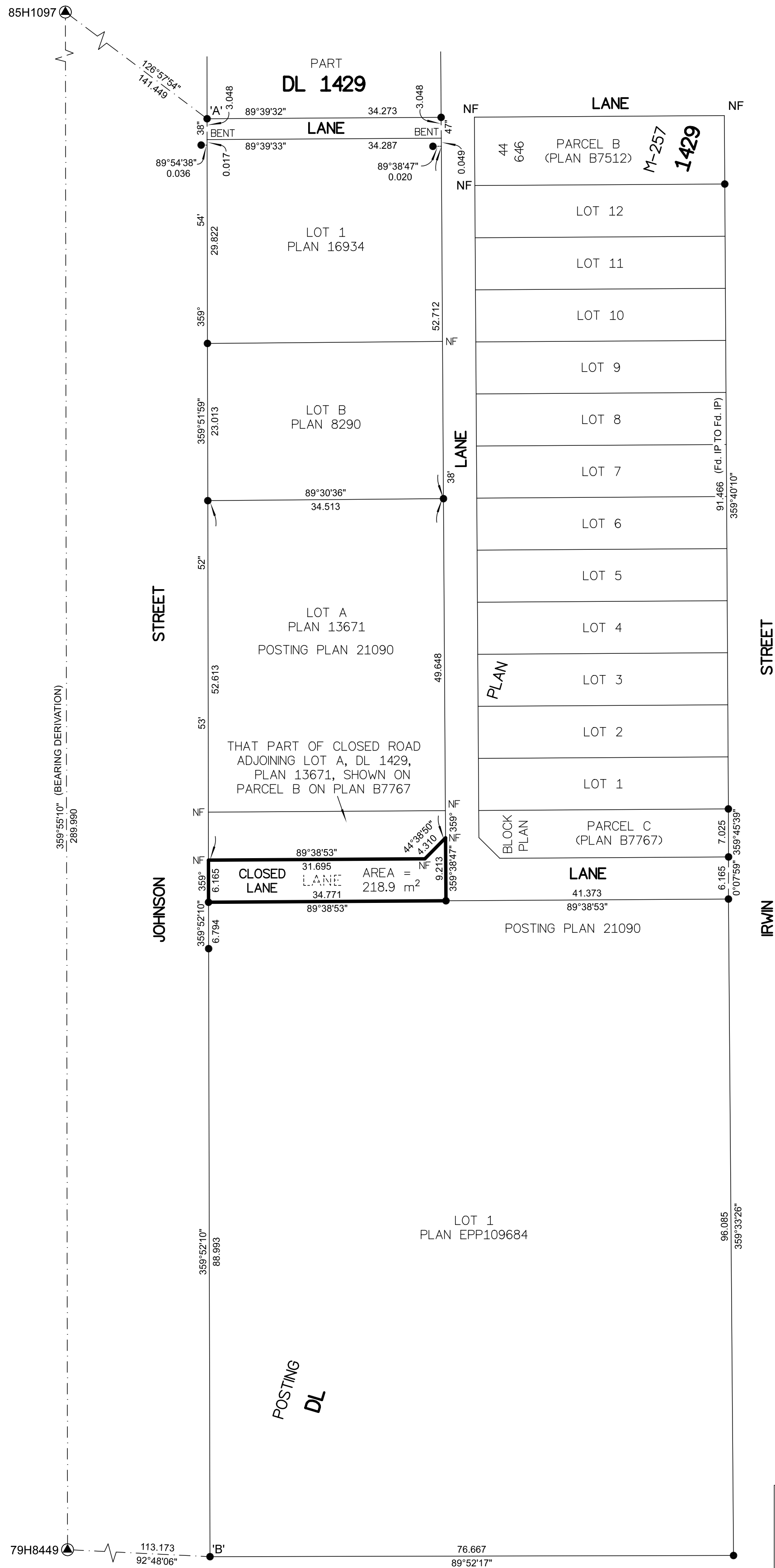
THIS PLAN SHOWS HORIZONTAL GROUND-LEVEL DISTANCES
UNLESS OTHERWISE SPECIFIED. TO COMPUTE GRID DISTANCES,
MULTIPLY GROUND-LEVEL DISTANCES BY THE AVERAGE
COMBINED FACTOR OF 0.9995106 WHICH HAS BEEN DERIVED
FROM GEODETTIC CONTROL MONUMENTS 79H8449 AND 85H1097.

NOTE:
SOME POSTS AND LINES ARE EXAGGERATED FOR CLARITY.

LEGEND

SYMBOLS		DESCRIPTION
FOUND	PLACED	
		CONTROL MONUMENT
		STANDARD IRON POST
EAA		ESTIMATED ABSOLUTE ACCURACY

GEOREFERENCING POSITIONS UTM COORDINATES, ZONE 10, NAD 83 (CSRS), 4.0.0.BC.1			
STATION	NORTHING	EASTING	EAA
Fd. IP 'A'	5973796.62	514482.31	0.09
Fd. IP 'B'	5973586.26	514482.73	0.09



INSPECTED UNDER THE LAND TITLE ACT ON 4th MARCH, 2021

THE FIELD SURVEY REPRESENTED BY THIS PLAN WAS COMPLETED
ON THE 3rd DAY OF SEPTEMBER, 2020
SHAUNA C. GOERTZEN, BCLS 798

THIS PLAN LIES WITHIN THE REGIONAL DISTRICT OF FRASER-FORT GEORGE.

McElhanney
McELHANNEY ASSOCIATES
LAND SURVEYING LTD.
Suite 12
556 North Nechako Road
Prince George BC
Canada V2K 1A1
Tel 250 561 2229
File No. 2341-6756-RC