

CITY OF PRINCE GEORGE
BYLAW NO. 9152, 2020

A Bylaw of the City of Prince George to permanently close a portion of road located adjacent to 2851 Gogolin Road and to remove its road dedication for the purpose of future disposal of the lands.

WHEREAS the Council of the City of Prince George deems it desirable that an approximate 83.8 square metres (m²) of road dedicated on Plan 3034, as shown on Reference Plan EPP93591 adjacent to the property legally described as Lot 16, District Lot 1433, Cariboo District, Plan 30304 and Lot 5, District Lot 1433, Cariboo District, Plan 10848 be closed to traffic, and that the road dedication thereof be removed;

AND WHEREAS, in accordance with section 40 of the *Community Charter*, notice of intention to adopt this bylaw has been delivered, posted and published, and an opportunity has been provided for persons who consider they are affected by this bylaw to make representations to Council;

NOW THEREFORE the Council of the City of Prince George, in open meeting assembled, **ENACTS AS FOLLOWS:**

1. That the portion of road dedicated on Plan 3034, adjacent to the property legally described as Lot 16, District Lot 1433, Cariboo District, Plan 30304 and Lot 5, District Lot 1433, Cariboo District, Plan 10848 as shown outlined in bold black on the Reference Plan EPP93591, attached hereto as Appendix "A" and forming part of this Bylaw, is closed to traffic.
2. That the portion of road dedicated on Plan 3034, adjacent to the property legally described as Lot 16, District Lot 1433, Cariboo District, Plan 30304 and Lot 5, District Lot 1433, Cariboo District, Plan 10848 as shown outlined in bold black on the Reference Plan EPP93591, attached hereto as Appendix "A" and forming part of this Bylaw, is removed.
3. The Mayor and Corporate Officer are hereby empowered to do all things necessary to give effect to this Bylaw.
4. This Bylaw shall come into full force and take effect upon its adoption and shall be filed with the Registrar of the applicable Land Title Office.
5. This Bylaw may be cited for all purposes as "City of Prince George 2851 Gogolin Road Closure Phase II Bylaw No. 9152, 2020".

READ A FIRST TIME THIS 7TH DAY OF DECEMBER , 2020.

READ A SECOND TIME THIS 7TH DAY OF DECEMBER , 2020.

First two readings passed by a **UNANIMOUS** decision of Members of City Council present and eligible to vote.

READ A THIRD TIME THIS DAY OF , 2021.

Third reading passed by a decision of Members of City Council present and eligible to vote.

Certified correct as passed third reading this day of , 2021.

CORPORATE OFFICER OF
THE CITY OF PRINCE GEORGE

APPROVED BY THE MINISTER OF TRANSPORTATION AND INFRASTRUCTURE PURSUANT TO THE PROVISIONS OF SECTION 41(3) OF THE *COMMUNITY CHARTER*.

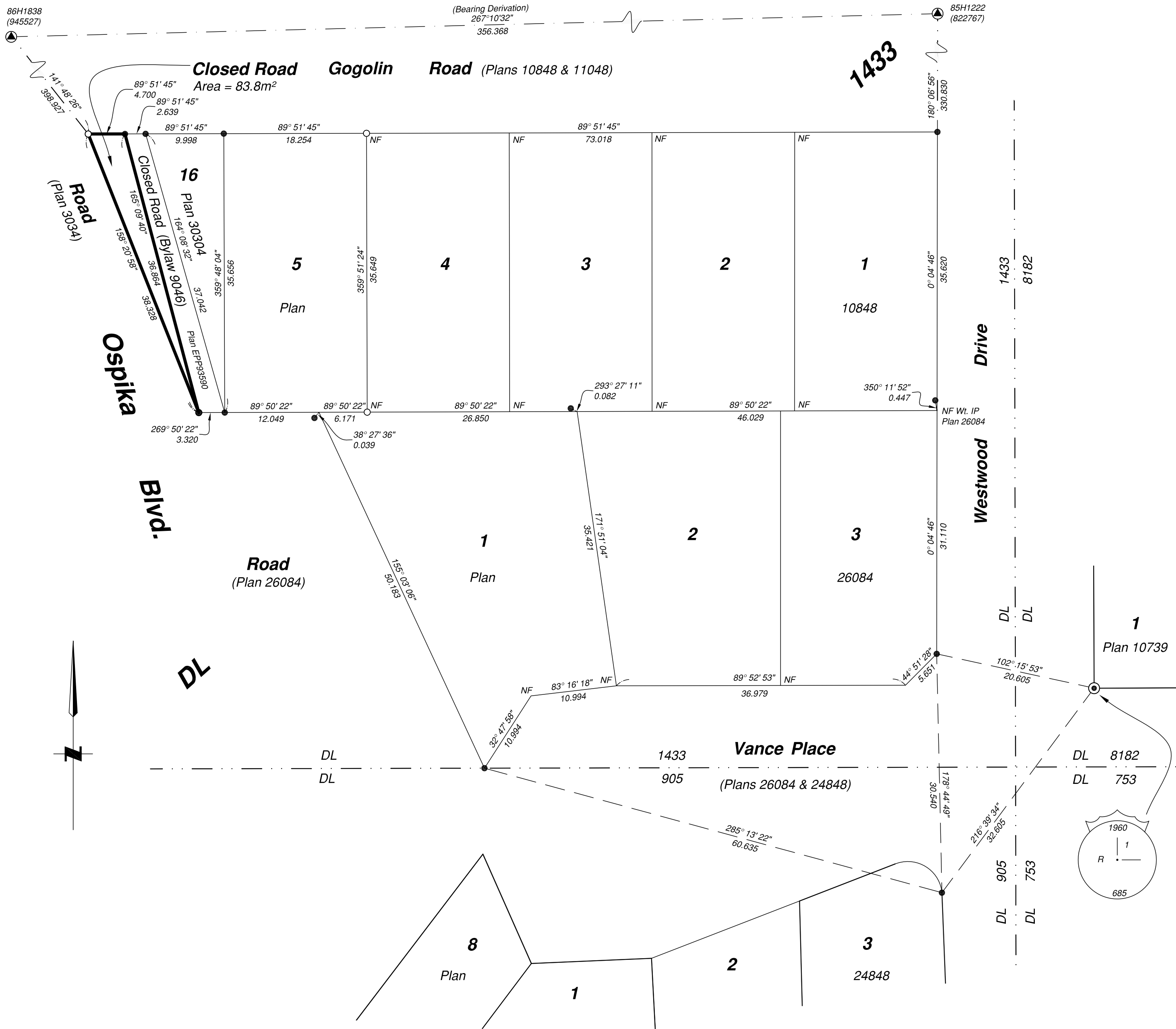
THIS DAY OF 2021.

for MINISTER OF TRANSPORTATION
AND INFRASTRUCTURE

ADOPTED THIS DAY OF , 2021,
BY A DECISION OF ALL MEMBERS OF CITY COUNCIL PRESENT AND
ELIGIBLE TO VOTE.

MAYOR

CORPORATE OFFICER



**Reference Plan to Accompany
By-law No. 9152 closing a portion
of road as shown dedicated on
Plan 3034, District Lot 1433,
Cariboo District.**

Pursuant to Section 120 of the Land Title Act and Section 40 of the Community Charter.

Integrated survey area No. 39 Prince George, BC,
NAD83 (CSRS) 4.0.0.BC.1

BCGS 93G.087



The intended plot size of this plan is 280mm in width by 432mm in height (C size) when plotted at a scale of 1:400.

All distances are in metres and decimals thereof.

Grid bearings are derived from observations between geodetic control monuments 85H1222 and 86H1838 and are referred to the central meridian of UTM Zone 10N (123° West Longitude).

The UTM coordinates and estimated horizontal positional accuracy achieved have been derived from mascot published coordinates and standard deviations for geodetic control monuments 85H1222 and 86H1838.

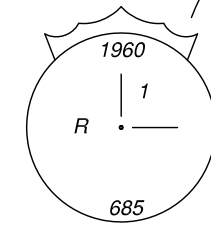
This plan shows horizontal ground-level distances unless otherwise specified. To compute grid distances, multiply ground-level distances by the average combined factor of 0.9995123 which has been derived from control monument 85H1222.

Note:
Some posts are exaggerated for clarity.

Legend

Found	Placed	Description
		Control Monument
		Standard Iron Post
		Standard Concrete Post
	CSF	Combined Scale Factor
	AHA	Absolute Horizontal Accuracy

Georeferencing Positions				
UTM Coordinates, Zone 10, NAD 83 (CSRS), 4.0.0.BC.1				
Station	Northing	Easting	AHA	CSF
85H1222	5970710.48	514481.84	0.10	0.9995123
86H1838	5970692.93	514126.08	0.10	0.9995111



The field survey represented by this plan was completed on the 2nd day of October, 2020

Albert Koehler, BCLS 974

This plan lies within the Regional District of Fraser-Fort George

File: 19058-RC-2

KOEHLER LAND SURVEYING INC.
1698 Lyon Street South
Prince George, BC V2N 1T3
Tel: (250) 614-9703