

REFERENCE PLAN OF CONSOLIDATION OF LOT 1, PLAN PGP44884, AND CLOSED LANE, PLAN EPP104532, ALL IN DISTRICT LOT 343, CARIBOO DISTRICT.

PURSUANT TO SECTION 100(1)(b) OF THE LAND TITLE ACT.

THIS PLAN LIES WITHIN INTEGRATED SURVEY AREA No. 39 PRINCE GEORGE, BC, NAD83 (CSRS) 4.0.0.BC.1

BCGS 93G.007



THE INTENDED PLOT SIZE OF THIS PLAN IS 560mm IN WIDTH BY 432mm IN HEIGHT (C-SIZE) WHEN PLOTTED AT A SCALE OF 1:500.

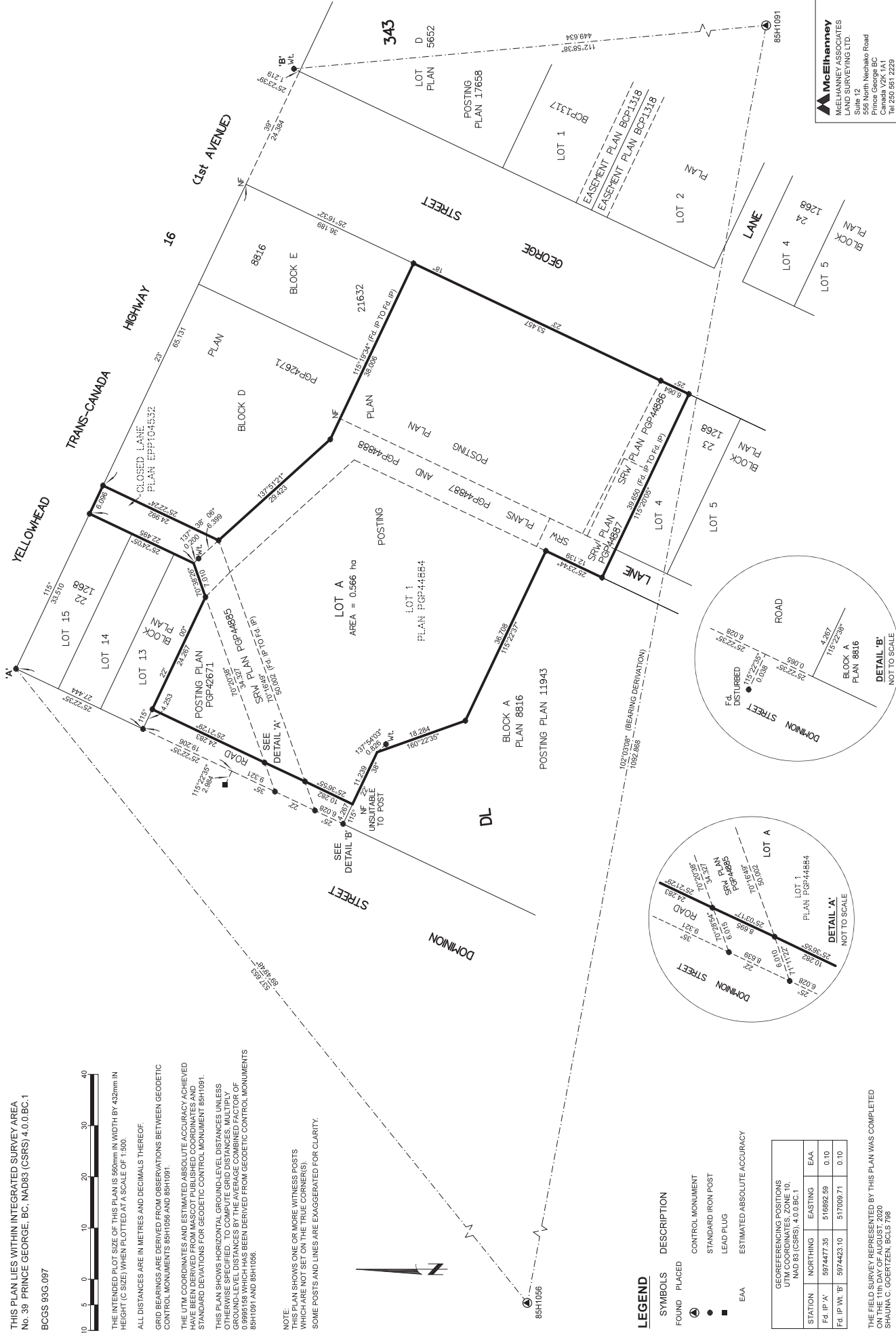
ALL DISTANCES ARE IN METRES AND DECIMALS THEREOF.

GRID BEARINGS ARE DERIVED FROM OBSERVATIONS BETWEEN GEODETIC CONTROL MONUMENTS 88H1056 AND 88H1061.

THE UTM COORDINATES AND ESTIMATED ABSOLUTE ACCURACY ACHIEVED HAVE BEEN DERIVED FROM MASCOT PUBLISHED COORDINATES AND STANDARD DEVIATIONS FOR GEODETIC CONTROL MONUMENT 88H1061.

THIS PLAN SHOWS HORIZONTAL GROUND-LEVEL DISTANCES UNLESS OTHERWISE SPECIFIED. TO COMPUTE GRID DISTANCES MULTIPLY GROUND-LEVEL DISTANCES BY THE AVERAGE COMBINED FACTOR OF 0.9995198 WHICH HAS BEEN DERIVED FROM GEODETIC CONTROL MONUMENTS 88H1061 AND 88H1056.

NOTE: THIS PLAN SHOWS ONE OR MORE WITNESS POSTS WHICH ARE NOT SET ON THE TRUE CORNERS. SOME POSTS AND LINES ARE EXAGGERATED FOR CLARITY.



LEGEND

- SYMBOLS DESCRIPTION
- FOUND PLACED
- CONTROL MONUMENT
- STANDARD IRON POST
- LEAD PLUG
- EAA ESTIMATED ABSOLUTE ACCURACY

GEOREFERENCING POSITIONS	
UTM COORDINATES ZONE 10, NAD 83 (CSRS), 4.0.0.BC.1	
STATION	EASTING
Fd, IP, A'	5974477.35
Fd, IP, Wt, B'	5974423.10
	577069.71
	0.10

THE FIELD SURVEY REPRESENTED BY THIS PLAN WAS COMPLETED ON THE 11th DAY OF AUGUST, 2020.
SHAUNA C. GOERTZEN, B.C.L.S. 798

THIS PLAN LIES WITHIN THE REGIONAL DISTRICT OF FRASER-FORT GEORGE.

McElhenney
 McELHENNEY ASSOCIATES
 LAND SURVEYING LTD.
 Suite 12
 555 North Nechako Road
 Prince George BC
 Canada V2K 1A1
 Tel: 250.561.7229
 File No. 2341-6751-COON