

REFERENCE PLAN TO ACCOMPANY BY-LAW No. 9141 (PRINCE GEORGE, BC),
 TO CLOSE LANE ADJACENT TO LOT 1, PLAN PGP44884,
 SHOWN DEDICATED ON PLAN 1268, DISTRICT LOT 343, CARIBOO DISTRICT.

PLAN EPP104532

PURSUANT TO SECTION 120 OF THE LAND TITLE ACT AND SECTION 40
 OF THE COMMUNITY CHARTER.

THIS PLAN LIES WITHIN INTEGRATED SURVEY AREA
 No. 39 PRINCE GEORGE, BC, NAD83 (CSRS) 4.0 0.BC.1

BCGS 93G.097



THE INTENDED PLOT SIZE OF THIS PLAN IS 560mm IN WIDTH BY 432mm IN
 HEIGHT (C SIZE) WHEN PLOTTED AT A SCALE OF 1:500.

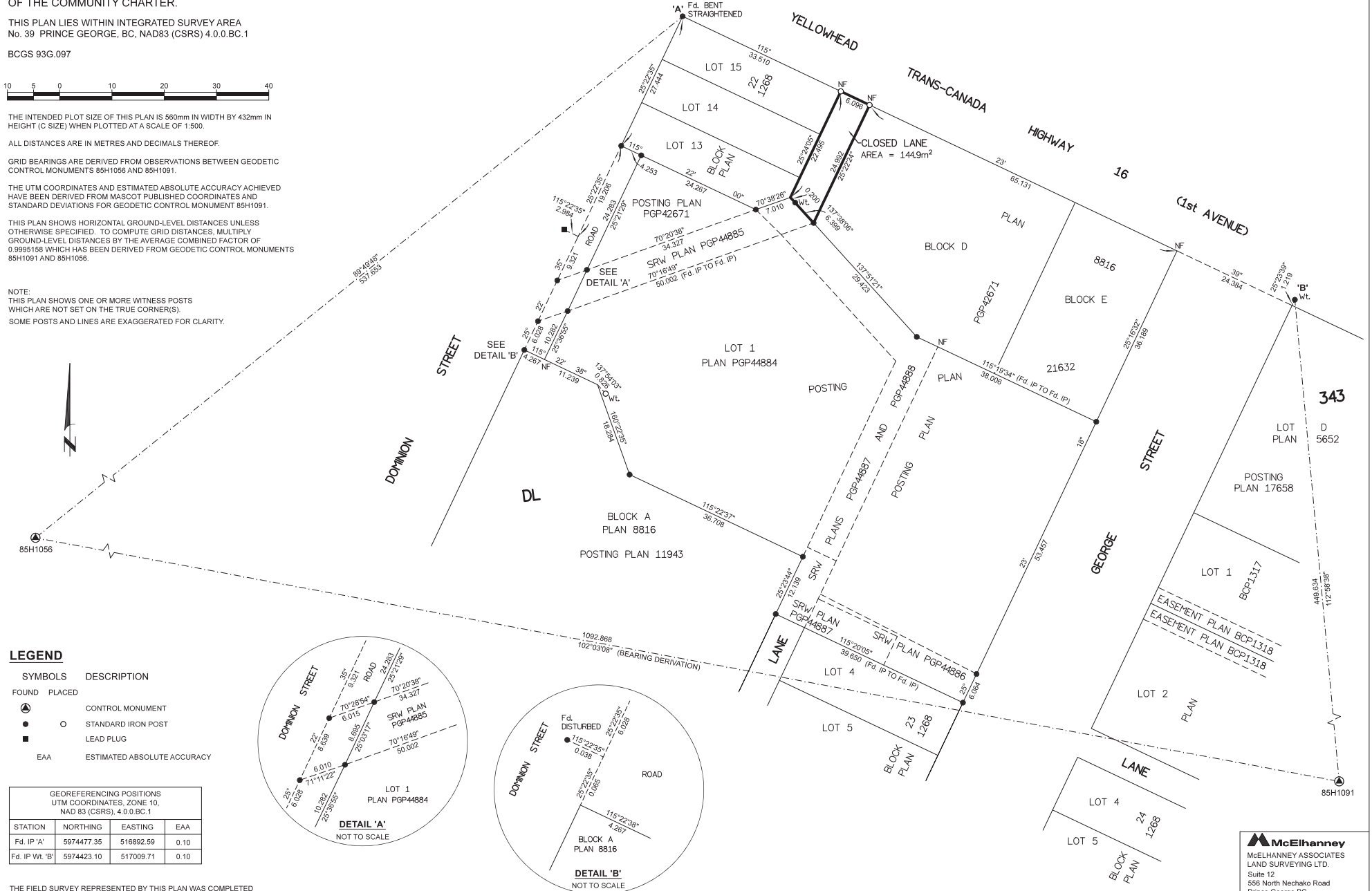
ALL DISTANCES ARE IN METRES AND DECIMALS THEREOF.

GRID BEARINGS ARE DERIVED FROM OBSERVATIONS BETWEEN GEODETIC
 CONTROL MONUMENTS 85H1056 AND 85H1091.

THE UTM COORDINATES AND ESTIMATED ABSOLUTE ACCURACY ACHIEVED
 HAVE BEEN DERIVED FROM MASCOT PUBLISHED COORDINATES AND
 STANDARD DEVIATIONS FOR GEODETIC CONTROL MONUMENT 85H1091.

THIS PLAN SHOWS HORIZONTAL GROUND-LEVEL DISTANCES UNLESS
 OTHERWISE SPECIFIED. TO COMPUTE GRID DISTANCES, MULTIPLY
 GROUND-LEVEL DISTANCES BY THE AVERAGE COMBINED FACTOR OF
 0.9995158 WHICH HAS BEEN DERIVED FROM GEODETIC CONTROL MONUMENTS
 85H1091 AND 85H1056.

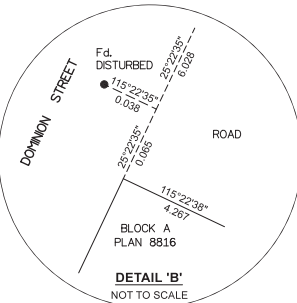
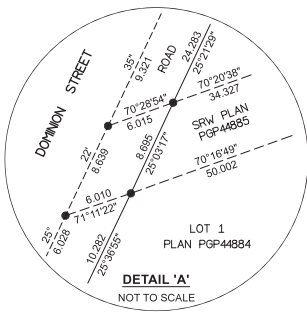
NOTE:
 THIS PLAN SHOWS ONE OR MORE WITNESS POSTS
 WHICH ARE NOT SET ON THE TRUE CORNER(S).
 SOME POSTS AND LINES ARE EXAGGERATED FOR CLARITY.



LEGEND

SYMBOLS	DESCRIPTION
FOUND	PLACED
▲	CONTROL MONUMENT
●	STANDARD IRON POST
○	LEAD PLUG
●	EAA
	ESTIMATED ABSOLUTE ACCURACY

GEOREFERENCING POSITIONS UTM COORDINATES, ZONE 10, NAD 83 (CSRS), 4.0 0.BC.1			
STATION	NORTHING	EASTING	EAA
Fd. IP 'A'	5974477.35	516892.59	0.10
Fd. IP Wt. 'B'	5974423.10	517009.71	0.10



THE FIELD SURVEY REPRESENTED BY THIS PLAN WAS COMPLETED
 ON THE 11th DAY OF AUGUST, 2020
 SHAUNA C. GOERTZEN, BCLS 798

THIS PLAN LIES WITHIN THE REGIONAL DISTRICT OF FRASER-FORT GEORGE.

McElhanney
 McELHANNEY ASSOCIATES
 LAND SURVEYING LTD.
 Suite 12
 556 North Nechako Road
 Prince George BC
 Canada V2K 1A1
 Tel 250 561 2229
 File No. 2341-6751-RC