

**Reference Plan to Accompany
By-law No. 9099 Closing a portion
of Lane shown dedicated on Plan
1268, District Lot 343, Cariboo
District.**

Pursuant to Section 120 of the Land Title Act and
Section 40 of the Community Charter.

Integrated survey area No. 39 Prince George, BC,
NAD83 (CSRS) 4.0.0.BC.1

BCGS 93G.097



The intended plot size of this plan is 432mm in width by 559mm in height (C size)
when plotted at a scale of 1:500.

All distances are in metres and decimals thereof.

Grid bearings are derived from observations between geodetic control
monuments 515379 (85H1331) and 995530 (85H1116) and are referred
to the central meridian of UTM Zone 10 North (123° west longitude).

The UTM coordinates and estimated absolute accuracy achieved have
been derived from MASCOT published coordinates and standard
deviations for geodetic control monuments 515379 (85H1331) and
995530 (85H1116).

This plan shows horizontal ground-level distances unless otherwise
specified. To compute grid distances, multiply ground-level distances by
the average combined factor of 0.9995155 which has been derived from
control monument 515379 (85H1331).

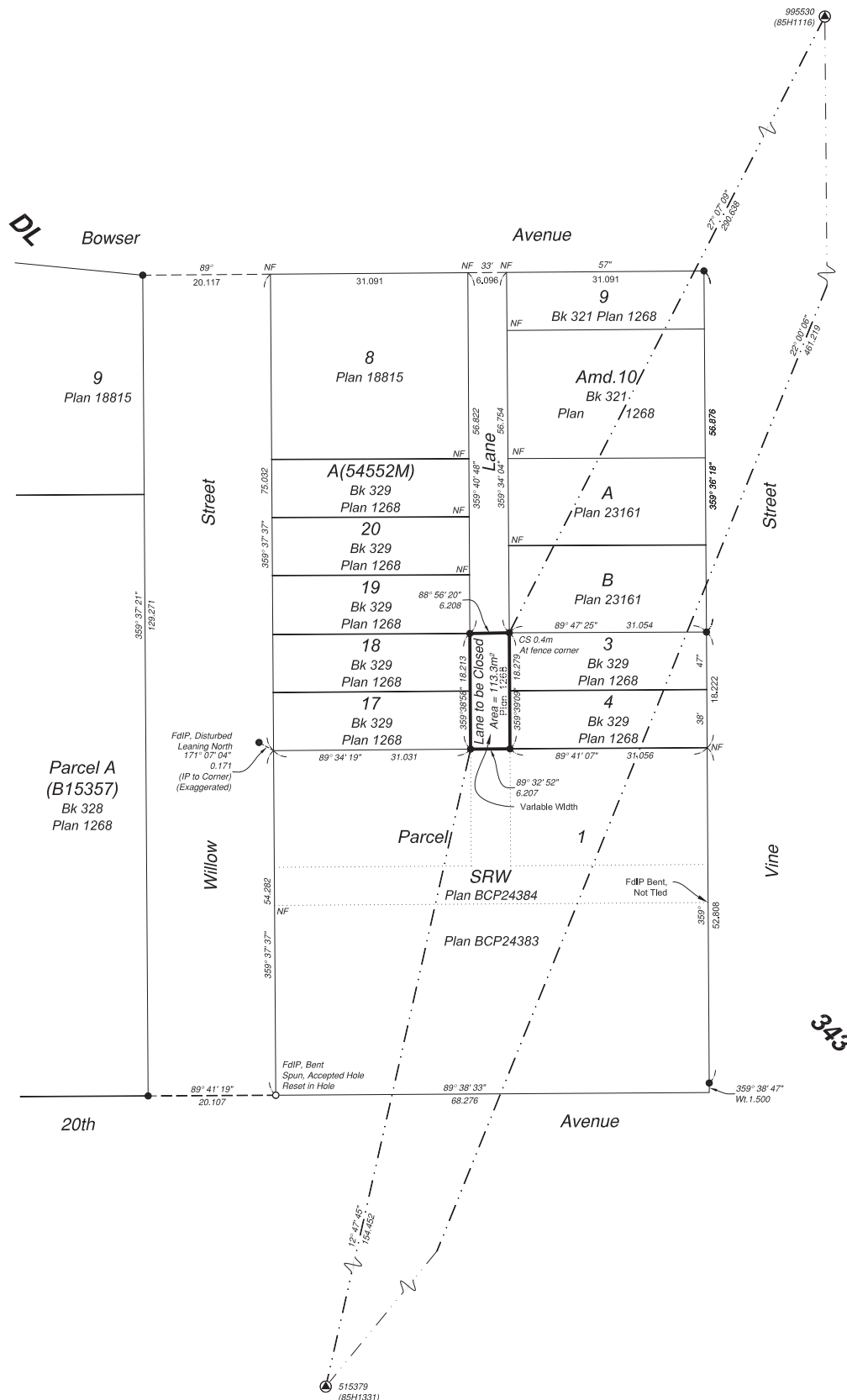
Note:
This plan shows one or more witness posts which are not set
on the true corner(s).

Some posts are exaggerated for clarity.

Legend

| Symbols | Description |
|--------------------|-----------------------------|
| Found | Placed |
| Control Monument | |
| Standard Iron Post | |
| CSF | Combined Scale Factor |
| EAA | Estimated Absolute Accuracy |
| Bk | Block |
| CS | Countersunk |
| Amd. | Amended Lot |

| Georeferencing Positions UTM Coordinates, Zone 10, NAD 83 (CSRS), 4.0.0.BC.1 | | | | |
|---|------------|-----------|------|-----------|
| Station | Northing | Easting | EAA | CSF |
| 515379 | 5972939.86 | 515558.60 | 0.05 | 0.9995155 |
| 995530 | 5973367.28 | 515731.31 | 0.05 | 0.9995157 |



The field survey represented by this plan was
completed on the 24th day of July, 2020.

Scott A. Maguire, BCLS 903

This plan lies within the Regional District of Fraser-Fort George

File: 20038-RC

KOEHLER LAND SURVEYING INC.
1698 Lyon Street South
Prince George, BC V2N 1T3
Tel: (250) 614-9703