

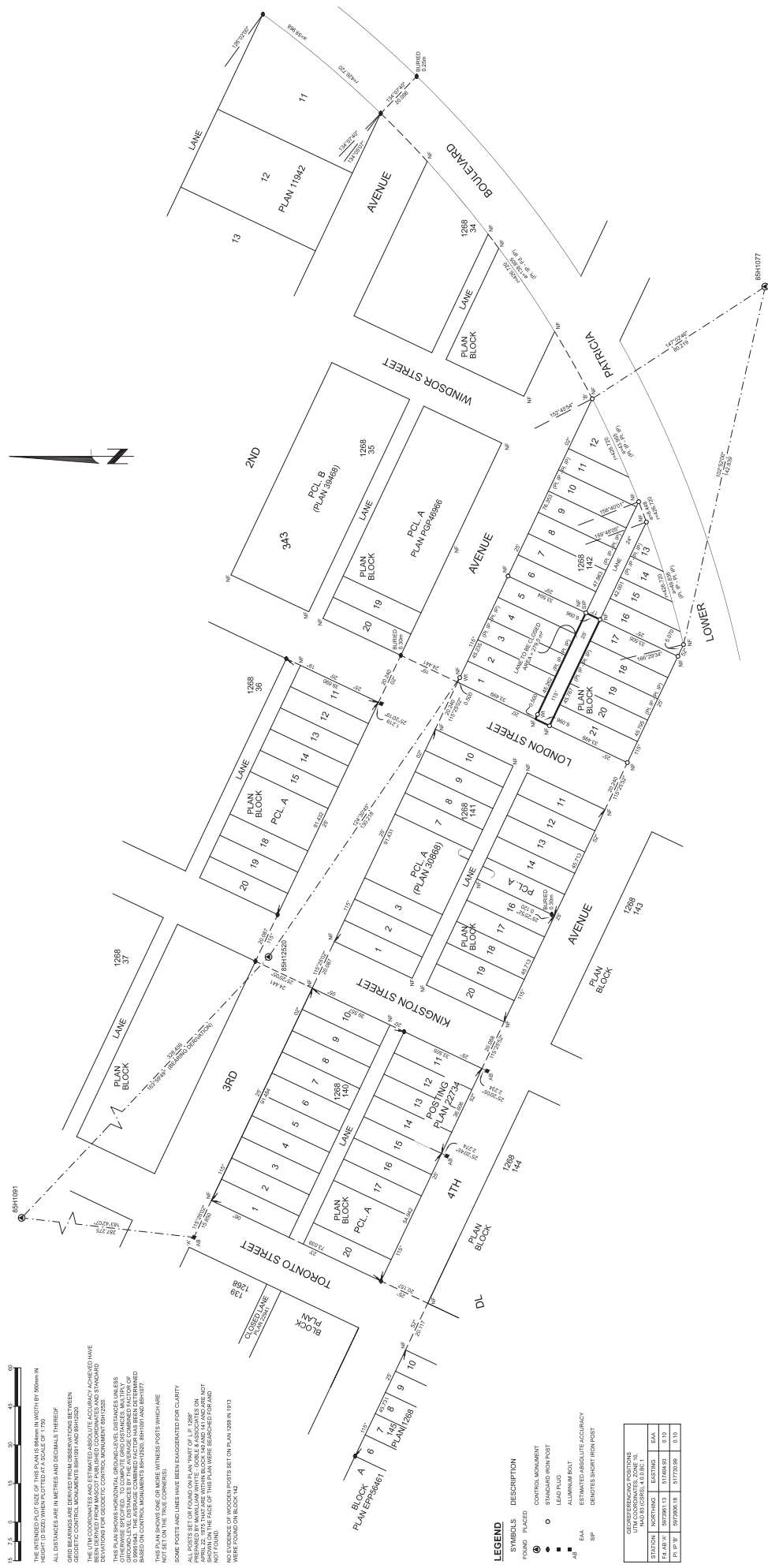
REFERENCE PLAN TO ACCOMPANY BY-LAW No. 9131, 2020 (PRINCE GEORGE BC) TO CLOSE PART OF LANE ADJACENT TO BLOCK 142 DEDICATED ON PLAN 1268 DISTRICT LOT 343, CARIBOO DISTRICT PURSUANT TO SECTION 120 OF THE LAND TITLE ACT AND SECTION 40 OF THE COMMUNITY CHARTER THIS PLAN LIES WITHIN INTEGRATED SURVEY AREA No. 39 PRINCE GEORGE, BC, MADS (CSRS) 4.0 (B.C. 1 BCOS 930.097

THE INTENDED PLOT SIZE OF THIS PLAN IS 84mm IN WIDTH BY 500mm IN HEIGHT (D DIMENSIONS WHEN PLOTTED AT A SCALE OF 1:50).

ALL DISTANCES ARE IN METERS AND DECIMALS THEREOF. GEOMETRIC CONTROL POINTS (GCP) AND SPOTS ARE SHOWN ON THIS PLAN FOR REFERENCE ONLY AND HAVE NOT BEEN USED IN THE CALCULATION OF THIS PLAN.

THE UTM COORDINATES AND ESTIMATED ABSOLUTE ACCURACY ACHIEVED HAVE BEEN DETERMINED FROM A MOST RECENTLY AVAILABLE NATIONAL CONTROL NETWORK. THIS PLAN SHOWS HORIZONTAL, GEOMETRIC LEVEL DISTANCES AND BEARS THEREON. TO COMPUTE GRID DISTANCES, MATHEMATICAL CORRECTIONS SHOULD BE APPLIED TO THE UTM COORDINATES. THE AVERAGE COMBINED FACTOR HAS BEEN DETERMINED BASED ON CONTROL POINTS (GCP) AND SPOTS. THIS PLAN IS NOT TO BE USED FOR THE CONSTRUCTION OF WITNESS POSTS WHICH ARE NOT SET OUT ON THIS PLAN.

SOME SPOTS AND LINES HAVE BEEN ENLARGED FOR CLARITY. ALL POSTS SET OUT ON THIS PLAN ARE PART OF L.P. 1268. THIS PLAN IS NOT TO BE USED FOR THE CONSTRUCTION OF WITNESS POSTS WHICH ARE NOT SET OUT ON THIS PLAN. NO EVIDENCE OF WITNESS POSTS SET OUT ON L.P. 1268 IN 1913 WERE FOUND ON BLOCK 142.



LEGEND

- SYMBOLS FOUND
- DESCRIPTION
- CONTROL POINT
- STANDARD IRON POST
- ALUMINUM POST
- EAA
- ESTIMATED ABSOLUTE ACCURACY
- SP CENOTES SHORT IRON POST

COORDINATING POSITIONS			
STATION	NORTHING	EASTING	EAA
TA 42-4	5913981.13	517448.93	0.10
TA 10-1	5913982.18	517770.09	0.10

McKenney
LAND SURVEYING LTD.
558 North Vancouver Road
Vancouver, BC V6L 2G7
Canada 604.271.4111
TEL: 250.251.2222
FAX: 250.251.2222
WWW.MCKENNEY.COM

THIS PLAN LIES WITHIN THE REGIONAL DISTRICT OF PRINCE GEORGE.