

REFERENCE PLAN OF CONSOLIDATION OF LOTS 1 TO 5, INCLUSIVE, LOTS 17 TO 21, INCLUSIVE, ALL IN BLOCK 142, PLAN 1268 AND CLOSED LANE AS SHOWN ON PLAN EPP102680 ALL IN DISTRICT LOT 343, CARIBOO DISTRICT PURSUANT TO SECTION 100(1)(b) OF THE LAND TITLE ACT

THIS PLAN WAS SURVEYED BY SAUNDERS & ASSOCIATES INC. (S.A.A.) ON BEHALF OF THE REGISTERED OWNER, MR. & MRS. PRINCE GEORGE INC. (P.G.I.) AND IS BASED ON PLAN EPP102680, PLAN EPP102681 AND PLAN EPP102682.

THE UNCORRECTED AND ESTIMATED ABSOLUTE ACCURACY AND AVERAGE HORIZONTAL AND VERTICAL DISTANCES FROM THE CONTROL MONUMENT TO THE POINTS SURVEYED ARE AS FOLLOWS:

STATION	NORTHING	EASTING	EQA
P.G.I. 1	502951.13	237424.03	3.10
P.G.I. 2	502948.15	237424.03	3.10

THIS PLAN SHOWS ONE OR MORE WITNESS POSTS WHICH ARE NOT SET ON THE CORNERS.

SOME POINTS AND LINES HAVE BEEN ENLARGED FOR CLARITY.

THIS PLAN SHOWS THE LOCATION OF ALL WITNESS POSTS AND THE POINTS TO WHICH THEY REFER.

NO SPHERE OR WOODEN POSTS SET ON PLAN 1268 IN 1913 WERE FOUND ON THIS DATE.

THIS PLAN SHOWS THE LOCATION OF ALL WITNESS POSTS AND THE POINTS TO WHICH THEY REFER.

THE UNCORRECTED AND ESTIMATED ABSOLUTE ACCURACY AND AVERAGE HORIZONTAL AND VERTICAL DISTANCES FROM THE CONTROL MONUMENT TO THE POINTS SURVEYED ARE AS FOLLOWS:

STATION	NORTHING	EASTING	EQA
P.G.I. 1	502951.13	237424.03	3.10
P.G.I. 2	502948.15	237424.03	3.10

THIS PLAN SHOWS ONE OR MORE WITNESS POSTS WHICH ARE NOT SET ON THE CORNERS.

SOME POINTS AND LINES HAVE BEEN ENLARGED FOR CLARITY.

THIS PLAN SHOWS THE LOCATION OF ALL WITNESS POSTS AND THE POINTS TO WHICH THEY REFER.

NO SPHERE OR WOODEN POSTS SET ON PLAN 1268 IN 1913 WERE FOUND ON THIS DATE.

THIS PLAN SHOWS THE LOCATION OF ALL WITNESS POSTS AND THE POINTS TO WHICH THEY REFER.

THE UNCORRECTED AND ESTIMATED ABSOLUTE ACCURACY AND AVERAGE HORIZONTAL AND VERTICAL DISTANCES FROM THE CONTROL MONUMENT TO THE POINTS SURVEYED ARE AS FOLLOWS:

STATION	NORTHING	EASTING	EQA
P.G.I. 1	502951.13	237424.03	3.10
P.G.I. 2	502948.15	237424.03	3.10

THIS PLAN SHOWS ONE OR MORE WITNESS POSTS WHICH ARE NOT SET ON THE CORNERS.

SOME POINTS AND LINES HAVE BEEN ENLARGED FOR CLARITY.

THIS PLAN SHOWS THE LOCATION OF ALL WITNESS POSTS AND THE POINTS TO WHICH THEY REFER.

NO SPHERE OR WOODEN POSTS SET ON PLAN 1268 IN 1913 WERE FOUND ON THIS DATE.

THIS PLAN SHOWS THE LOCATION OF ALL WITNESS POSTS AND THE POINTS TO WHICH THEY REFER.

THE UNCORRECTED AND ESTIMATED ABSOLUTE ACCURACY AND AVERAGE HORIZONTAL AND VERTICAL DISTANCES FROM THE CONTROL MONUMENT TO THE POINTS SURVEYED ARE AS FOLLOWS:

STATION	NORTHING	EASTING	EQA
P.G.I. 1	502951.13	237424.03	3.10
P.G.I. 2	502948.15	237424.03	3.10

THIS PLAN SHOWS ONE OR MORE WITNESS POSTS WHICH ARE NOT SET ON THE CORNERS.

SOME POINTS AND LINES HAVE BEEN ENLARGED FOR CLARITY.

THIS PLAN SHOWS THE LOCATION OF ALL WITNESS POSTS AND THE POINTS TO WHICH THEY REFER.

NO SPHERE OR WOODEN POSTS SET ON PLAN 1268 IN 1913 WERE FOUND ON THIS DATE.

THIS PLAN SHOWS THE LOCATION OF ALL WITNESS POSTS AND THE POINTS TO WHICH THEY REFER.

THE UNCORRECTED AND ESTIMATED ABSOLUTE ACCURACY AND AVERAGE HORIZONTAL AND VERTICAL DISTANCES FROM THE CONTROL MONUMENT TO THE POINTS SURVEYED ARE AS FOLLOWS:

STATION	NORTHING	EASTING	EQA
P.G.I. 1	502951.13	237424.03	3.10
P.G.I. 2	502948.15	237424.03	3.10

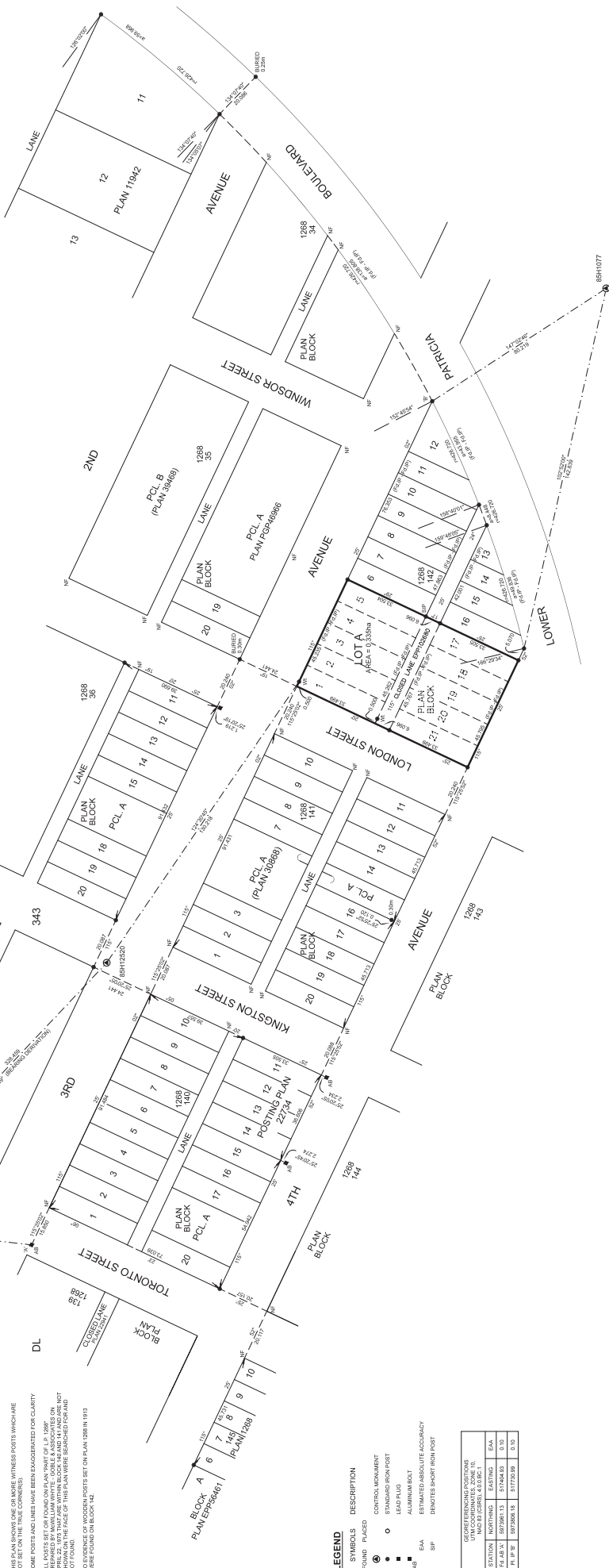
THIS PLAN SHOWS ONE OR MORE WITNESS POSTS WHICH ARE NOT SET ON THE CORNERS.

SOME POINTS AND LINES HAVE BEEN ENLARGED FOR CLARITY.

THIS PLAN SHOWS THE LOCATION OF ALL WITNESS POSTS AND THE POINTS TO WHICH THEY REFER.

NO SPHERE OR WOODEN POSTS SET ON PLAN 1268 IN 1913 WERE FOUND ON THIS DATE.

THIS PLAN SHOWS THE LOCATION OF ALL WITNESS POSTS AND THE POINTS TO WHICH THEY REFER.



LEGEND

SYMBOLS	DESCRIPTION
○	CONTROL MONUMENT
●	STANDARD IRON POST
⊙	ALUMINUM POST
⊙	ESTIMATED ABSOLUTE ACCURACY
⊙	ENOTES SHORT IRON POST

GEODETIC INFORMATION SYSTEMS
 NATIONAL CENTER FOR GEODETIC SURVEYING
 CANADA

STATION	NORTHING	EASTING	EQA
P.G.I. 1	502951.13	237424.03	3.10
P.G.I. 2	502948.15	237424.03	3.10

McKenney
 LAND SURVEYING LTD.
 555 North Main Street
 Cambridge, ON N1R 1A1
 Tel: 519-291-2222
 Fax: 519-291-2222
 www.mckenney.com

THIS FIELD SURVEY REPRESENTED BY THIS PLAN WAS COMPLETED BY SAUNDERS & ASSOCIATES INC. (S.A.A.) ON BEHALF OF THE REGISTERED OWNER, MR. & MRS. PRINCE GEORGE INC. (P.G.I.) AND IS BASED ON PLAN EPP102680, PLAN EPP102681 AND PLAN EPP102682.