

CITY OF PRINCE GEORGE
BYLAW NO. 9117, 2020

A Bylaw of the City of Prince George to permanently close a portion of road located adjacent to 1440 Taylor Drive and to remove its highway dedication for the purpose of future disposal of the lands.

WHEREAS the Council of the City of Prince George deems it desirable that an approximate 336.4 m² of road dedicated on Plan 1268, adjacent to the property legally described as Lot 1, District Lot 343, Cariboo District, Plan 17026, as shown on Reference Plan EPP101302 as shown on Appendix "A", be closed to traffic, and that the highway dedication thereof be removed;

AND WHEREAS, in accordance with section 40 of the *Community Charter*, notice of intention to adopt this bylaw has been delivered, posted and published, and an opportunity has been provided for persons who consider they are affected by this bylaw to make representations to Council;

NOW THEREFORE the Council of the City of Prince George, in open meeting assembled, **ENACTS AS FOLLOWS:**

1. That the portion of highway dedicated on Plan 1268, adjacent to the property legally described as Lot 1, District Lot 343, Cariboo District, Plan 17026 as shown outlined in bold black on the proposed Reference Plan EPP101302, attached hereto as Appendix "A" and forming part of this Bylaw, is closed to traffic.
2. That the portion of highway dedicated on Plan 1268, adjacent to the property legally described as Lot 1, District Lot 343, Cariboo District, Plan 17026 as shown outlined in bold black on the proposed Reference Plan EPP101302, attached hereto as Appendix "A" and forming part of this Bylaw, is removed.
3. The Mayor and Corporate Officer are hereby empowered to do all things necessary to give effect to this Bylaw.
4. This Bylaw shall come into full force and take effect upon its adoption and shall be filed with the Registrar of the applicable Land Title Office.
5. This Bylaw may be cited for all purposes as "City of Prince George 1440 Taylor Drive Road Closure Bylaw No. 9117, 2020".

READ A FIRST TIME THIS 27TH DAY OF APRIL , 2020.

READ A SECOND TIME THIS 27TH DAY OF APRIL , 2020.

First two readings passed by

a

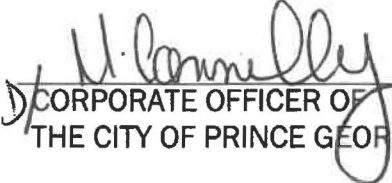
and eligible to vote.

UNANIMOUS decision of Members of City Council present

READ A THIRD TIME THIS **11TH** DAY OF **MAY** , 2020.

Third reading passed by a **UNANIMOUS** decision of Members of City Council present and eligible to vote.

Certified correct as passed third reading this **12TH** day of **MAY** , 2020.



CORPORATE OFFICER OF
THE CITY OF PRINCE GEORGE

APPROVED BY THE MINISTER OF TRANSPORTATION AND INFRASTRUCTURE PURSUANT TO THE PROVISIONS OF SECTION 41(3) OF THE COMMUNITY CHARTER.

THIS **5th** DAY OF **JUNE** , 2020.



for MINISTER OF TRANSPORTATION
AND INFRASTRUCTURE

ADOPTED THIS DAY OF , 2020,
BY A DECISION OF ALL MEMBERS OF CITY COUNCIL PRESENT AND
ELIGIBLE TO VOTE.

MAYOR

CORPORATE OFFICER

**REFERENCE PLAN TO ACCOMPANY
BY-LAW No. 9117, 2020 (PRINCE GEORGE, BC),
TO CLOSE PART OF ROAD DEDICATED ON PLAN 1268,
ALL IN DISTRICT LOT 343, CARIBOO DISTRICT.**

PURSUANT TO SECTION 120 OF THE LAND TITLE ACT AND
SECTION 40 OF THE COMMUNITY CHARTER.

THIS PLAN LIES WITHIN INTEGRATED SURVEY AREA
No. 39 PRINCE GEORGE, BC, NAD83 (CSRS) 4.0.0.BC.1

BCGS 93G.097



THE INTENDED PLOT SIZE OF THIS PLAN IS 432mm IN WIDTH BY 590mm IN
HEIGHT (C SIZE) WHEN PLOTTED AT A SCALE OF 1:600.

ALL DISTANCES ARE IN METRES AND DECIMALS THEREOF.

GRID BEARINGS ARE DERIVED FROM OBSERVATIONS BETWEEN
GEODETIC CONTROL MONUMENTS 85H1077 AND 85H1218.

THE UTM COORDINATES AND ESTIMATED ABSOLUTE ACCURACY
ACHIEVED HAVE BEEN DERIVED FROM MASCOT PUBLISHED
COORDINATES AND STANDARD DEVIATIONS FOR GEODETIC CONTROL
MONUMENTS 85H1077 AND 85H1218.

THIS PLAN SHOWS HORIZONTAL GROUND-LEVEL DISTANCES UNLESS
OTHERWISE SPECIFIED. TO COMPUTE GRID DISTANCES, MULTIPLY
GROUND-LEVEL DISTANCES BY THE AVERAGE COMBINED FACTOR OF
0.9995159 WHICH HAS BEEN DERIVED FROM CONTROL MONUMENTS
85H1077 AND 85H1218.

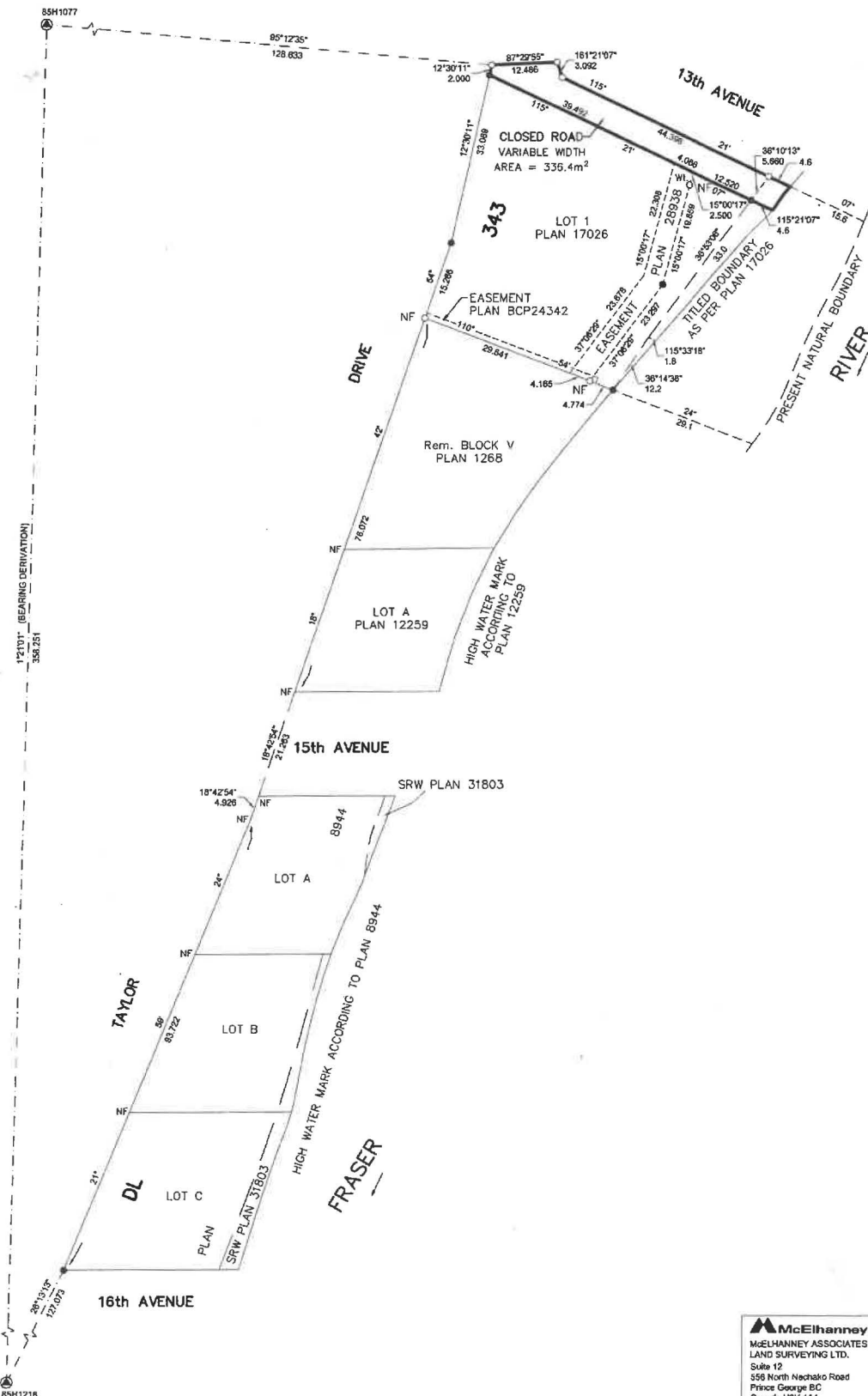
NOTE:
THIS PLAN SHOWS ONE OR MORE WITNESS POSTS
WHICH ARE NOT SET ON THE TRUE CORNER(S).

LEGEND

SYMBOLS	DESCRIPTION
FOUND PLACED	
●	CONTROL MONUMENT
○	STANDARD IRON POST
EAA	ESTIMATED ABSOLUTE ACCURACY
WL	WITNESS
NF	NOT FOUND

GEOREFERENCING POSITIONS UTM COORDINATES, ZONE 10, NAD 83 (CSRS), 4.0.0.BC.1

STATION	NORTHING	EASTING	EAA
85H1077	5873738.90	517774.81	0.10
85H1218	5973380.92	517766.17	0.10



THE FIELD SURVEY REPRESENTED BY THIS PLAN WAS COMPLETED
ON THE 17th DAY OF MARCH, 2020
THOMAS DUNKLEY, BCLS 1002

THIS PLAN LIES WITHIN THE REGIONAL DISTRICT OF FRASER-FORT GEORGE.

McElhanney
McELHANNEY ASSOCIATES
LAND SURVEYING LTD.
Suite 12
356 North Nechako Road
Prince George BC
Canada V2K 1A1
Tel 250 561 2229
File No. 2341-6741-RC