

PROVIDING SE I I PROCESS PROI COST  
DISPOSING ENTITY ASSET MONITORING  
LIFE CYCLE MANAGEMENT  
FIXED UPGRADING MAINTAINING SYSTEM  
FACILITIES GOODWILL OBJECTIVE DIGITAL  
INFRASTRUCTURE PHYSICAL ENTERPRISE



# Asset Management

## STRATEGY UPDATE

# & ASSET MANAGEMENT



# AREAS OF ASSET MANAGEMENT PROGRESS

1. Capacity Building
2. Leadership
3. Integration
4. People & Information
5. Assets
6. Planning
7. Implementation

# 1. CAPACITY BUILDING:

Formalized planning for the services  
that contribute to our quality of life



## 2. LEADERSHIP:



Engineering

+



Finance

+



Operations



Planning

+

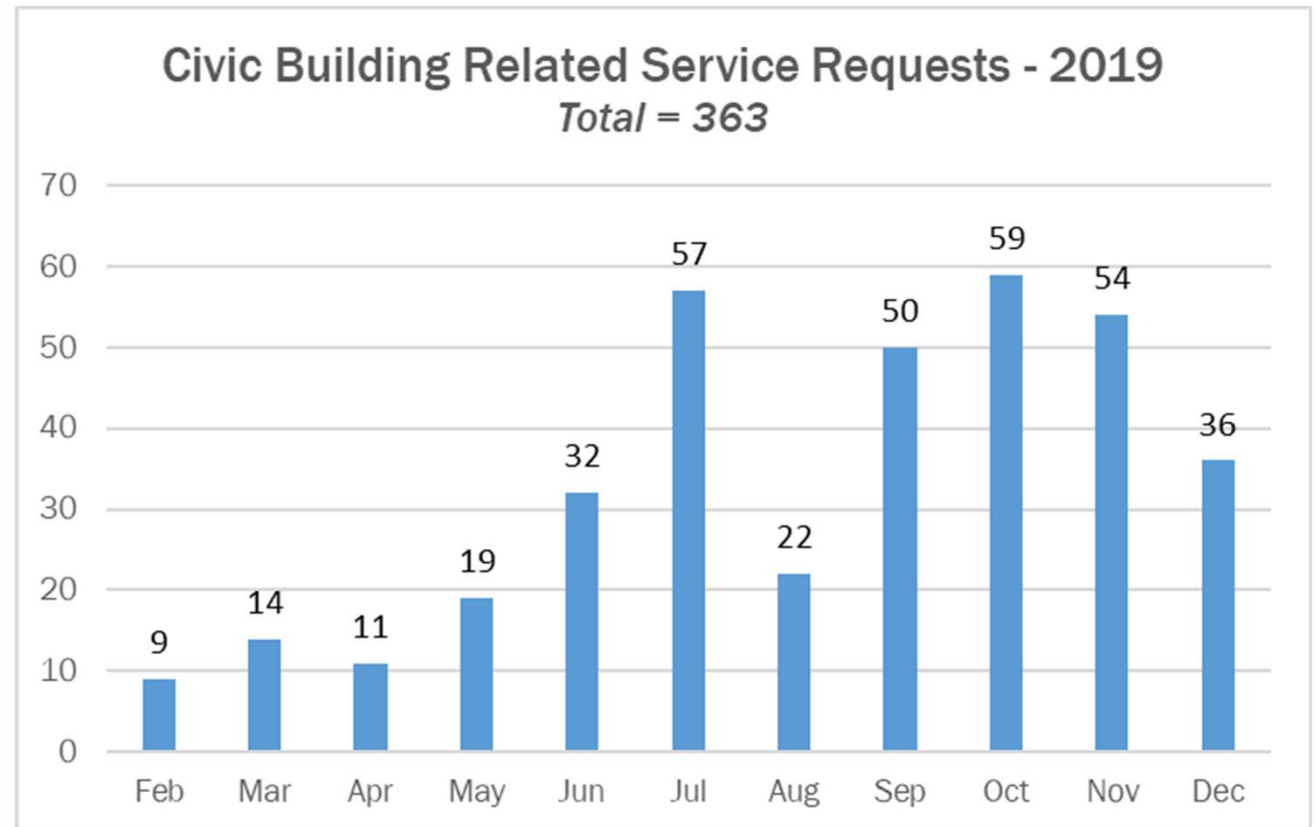


Communications

### 3. INTEGRATION:



**Civic Facilities  
Cityworks  
Implementation**



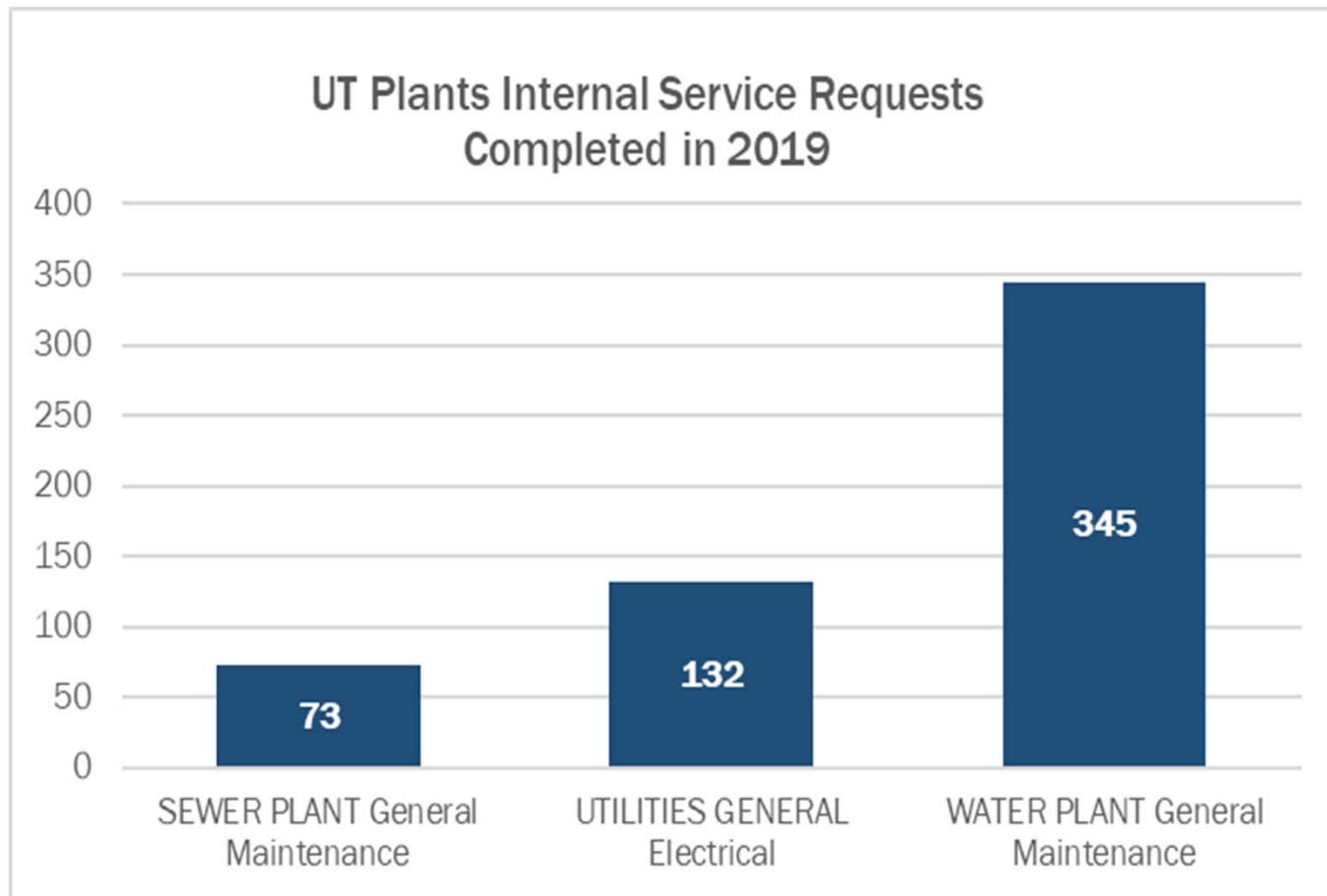
**1,183** Work Orders

**353** Inspections

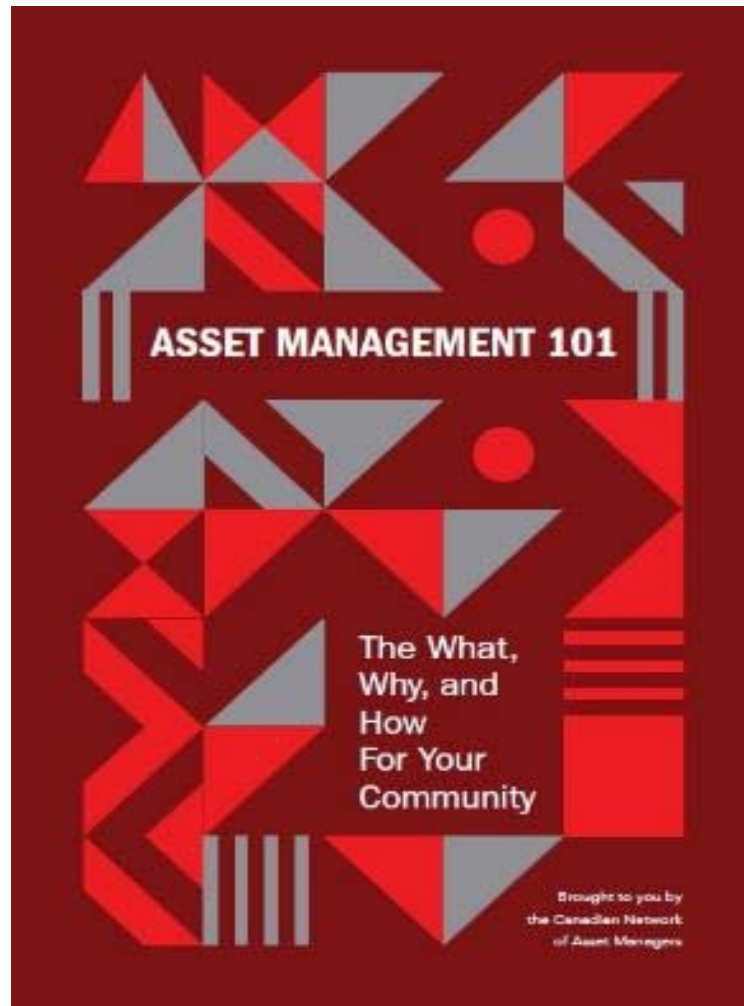


### 3. INTEGRATION Con't:

Cityworks & Utility Plants:



## 4. PEOPLE & INFORMATION:

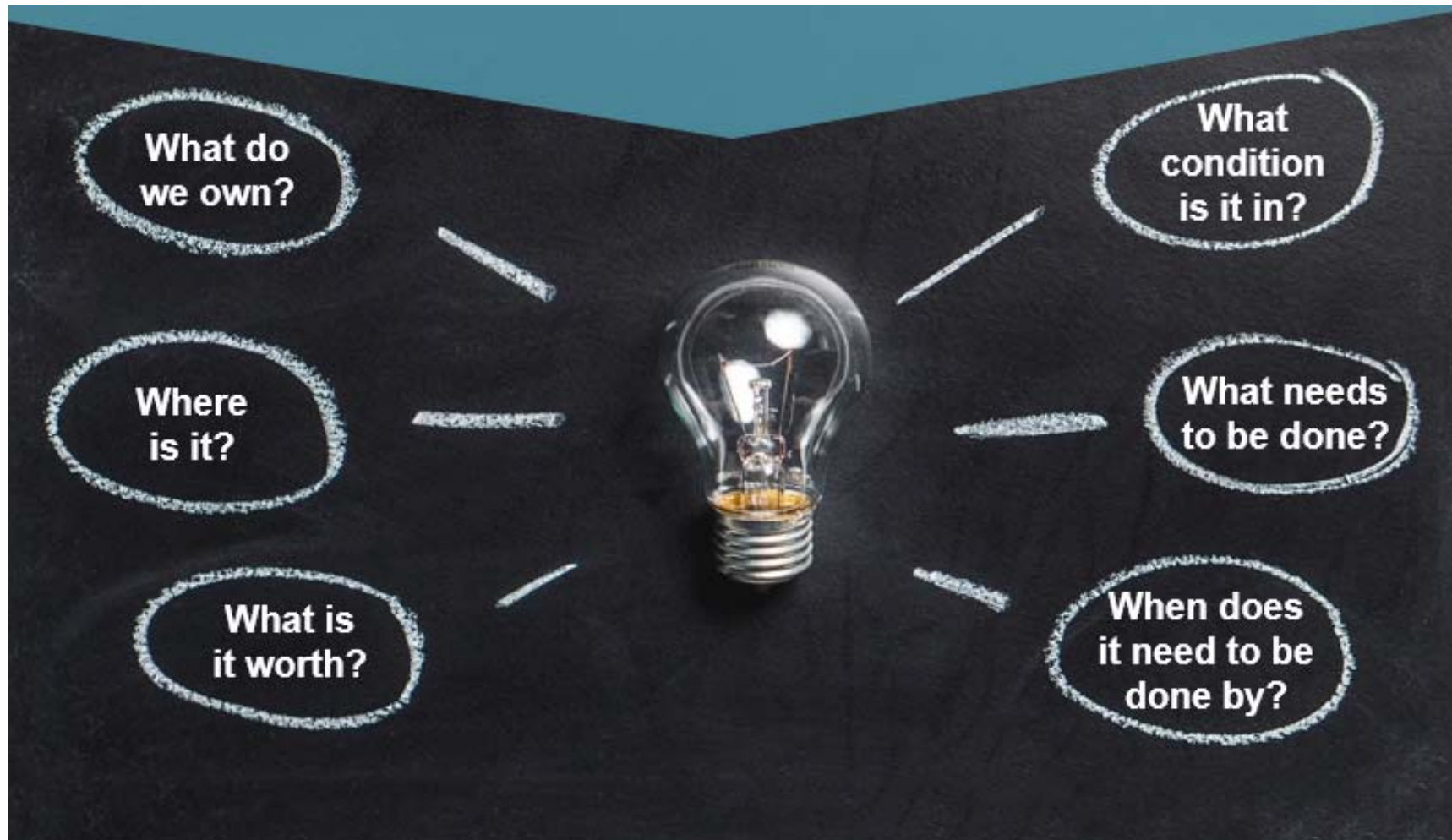


**232** Cityworks Users

**56** New Users in 2019



## 5. ASSETS:



# 5. ASSETS - LOCATION:

## Cityworks

- Operations & Asset Management
  - Associating Costs to Assets
  - Maintenance
  - Work History

## PGMap (Internal)

- Property ownership
- Bylaw services
- Subdivision Development review
- Community development
- Reports to council
- Utility Locates

## PGMap (External)

- General Public
- Real Estate Agents
- Engineering Companies
- Parks and Park Facilities
- School Districts
- RCMP
- Community Policing
- Community organizations
- Private Utility Companies
- Insurance companies
  - Hydrant locations

## ArcGIS Online

- Capital Projects
- Emergency Management
  - Critical Infrastructure
  - Community Wildfire protection plans
  - Community Evacuation plans
- Snow Removal Priorities
- Fire Hydrant availability
- Garbage Collection
- School Catchment Areas
- Community Trails

## PowerPlan ( RIVA)

- Condition Deterioration
- Risk Management
- Capital Planning

## 911 Fire Dispatch (FDM) Software

- The RDFFG Fire Dispatch Services
  - Civic Address and Property Locations
  - Routing to calls
  - Water Infrastructure:
    - Hydrants
    - Water Valves
    - Isolation Valves

## Open Data

- Engineering Design
  - Internal
  - External
- Flood plain mapping
- Watershed analysis
- Insurance Companies
- BC Provincial Government
- Land Title and Survey Authority
- Prince George Airport Authority
- BC Assessment Authority
- Private Utilities
- Land Surveyors

## Tempest

- Property Taxes
- Utility Service Connections & Taxes

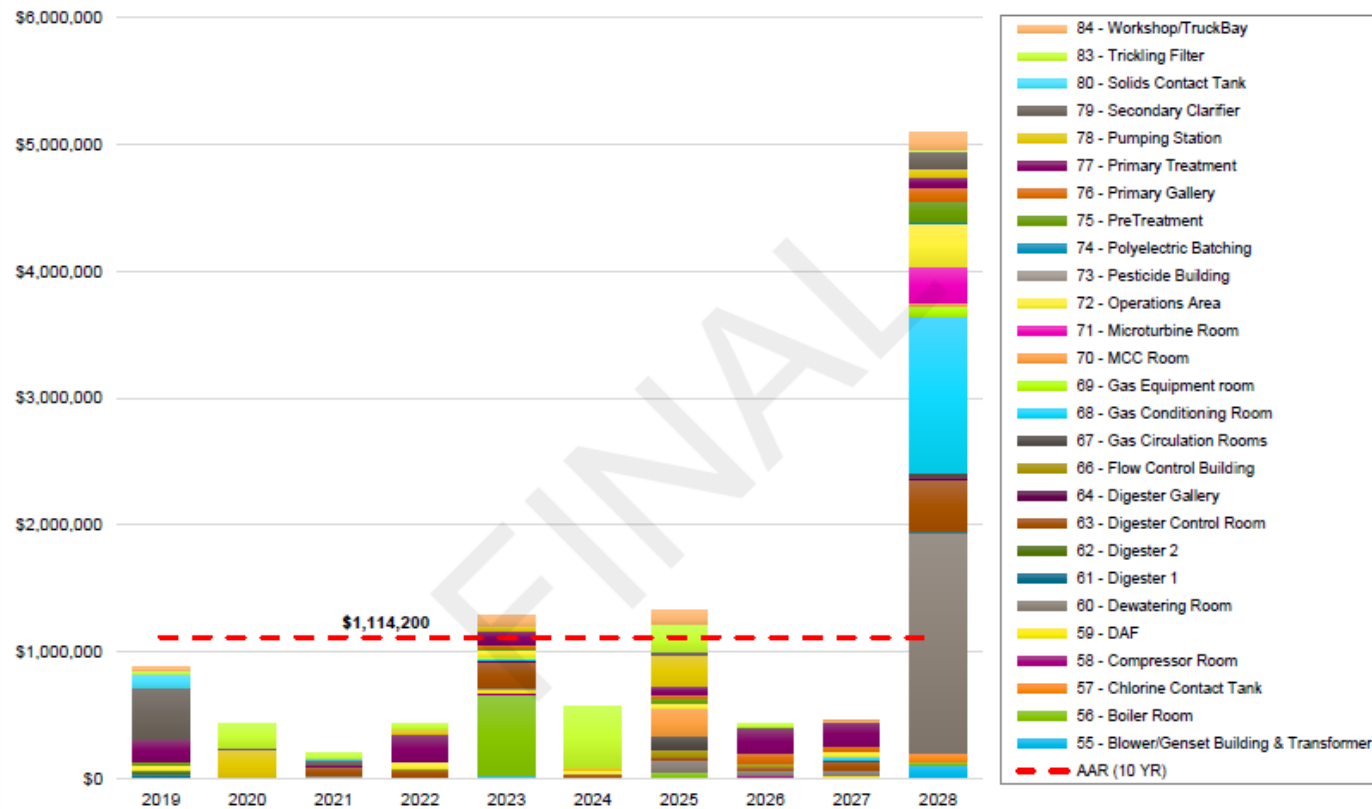
## InfoWater

- Water Modelling Software

## InfoSWMM

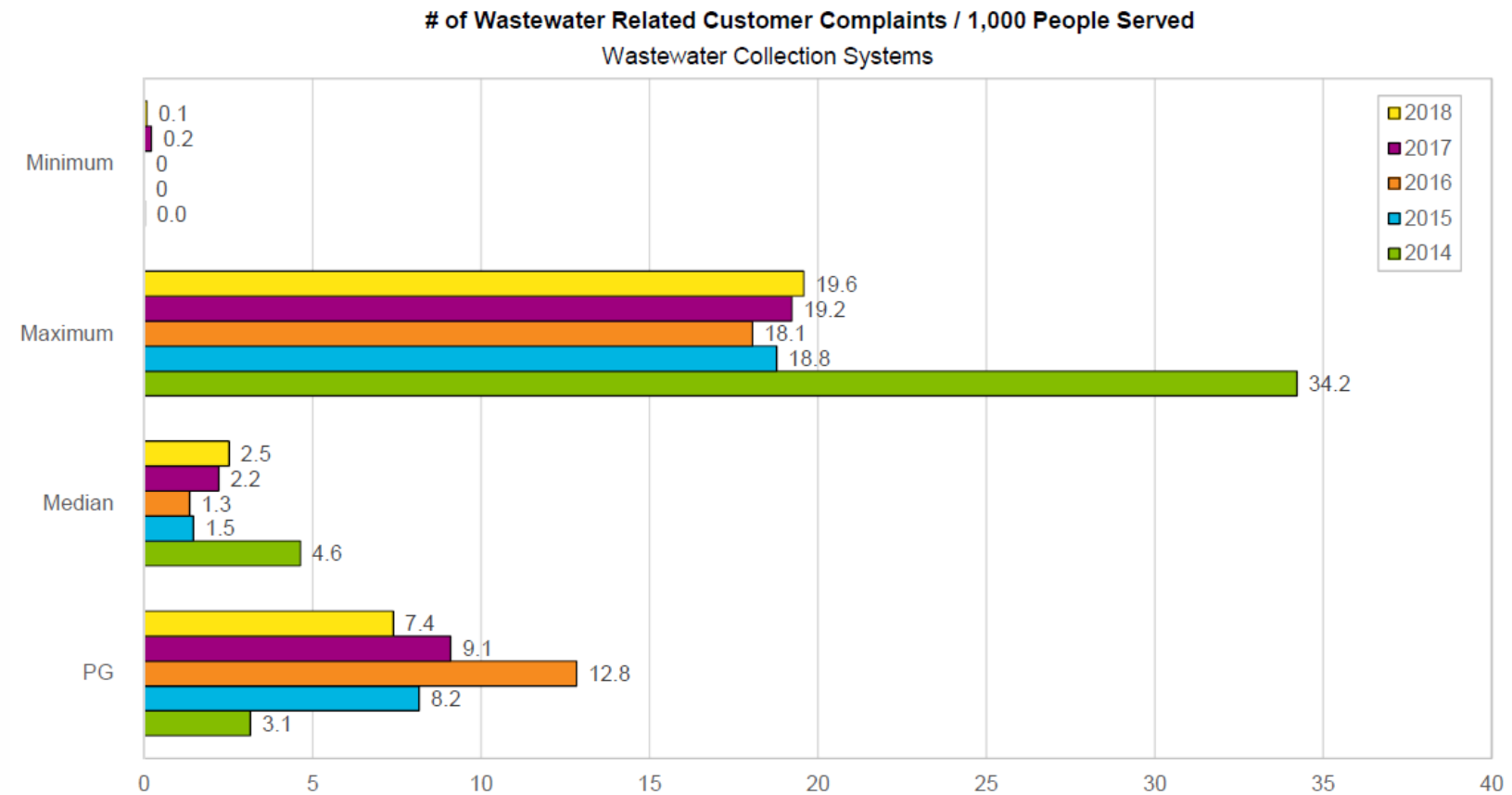
- Storm & Sanitary Modelling Software

# 5. ASSETS - CONDITION:

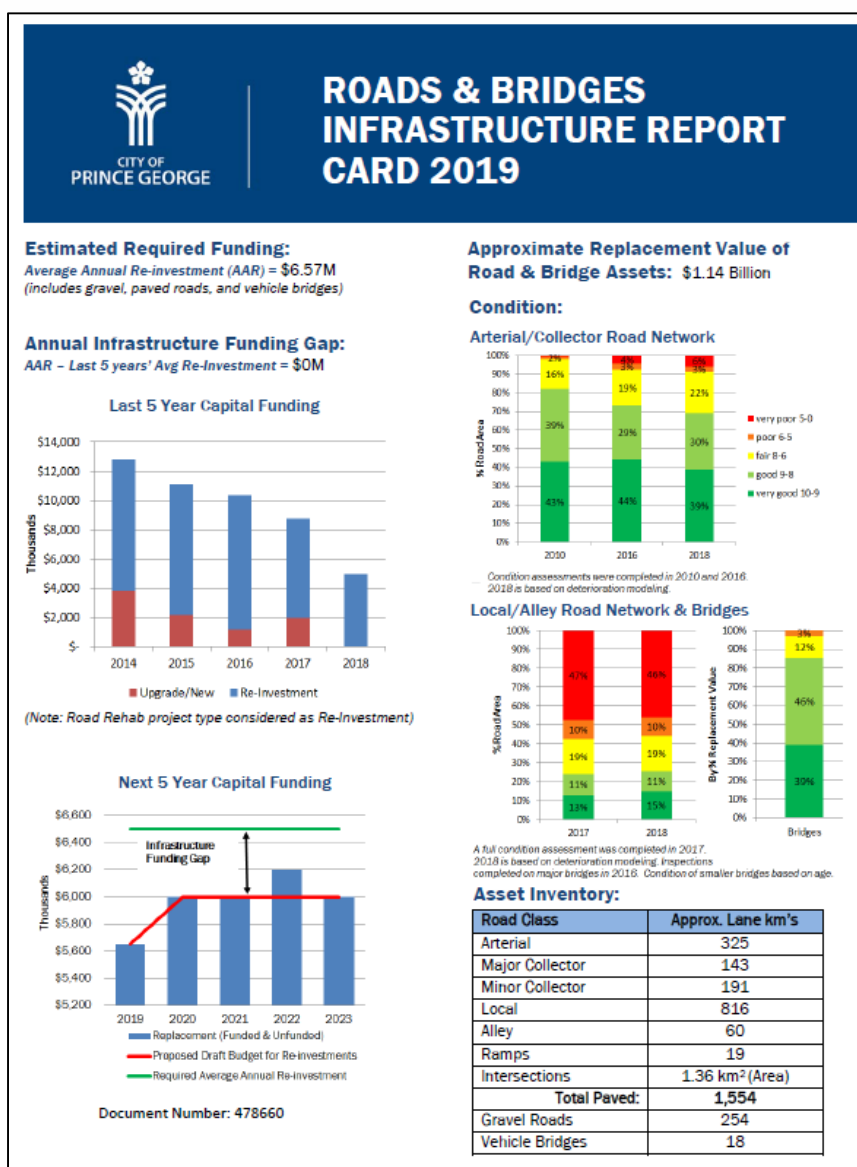
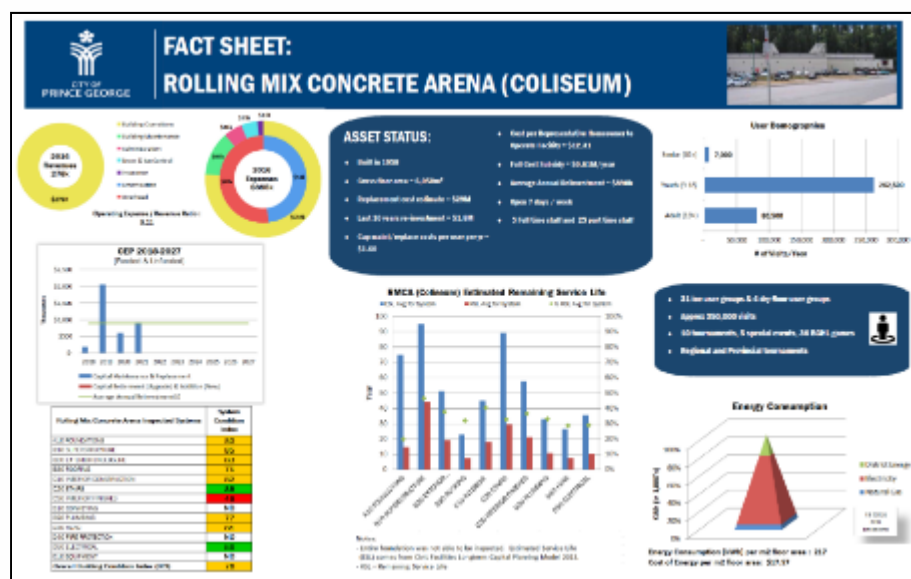


Station	Facility	
	Year Constructed	Condition Index
PW101	1967	65
PW102	1958	67
PW103	1959	72
PW104	1986	87
PW105	1965	65
PW106	1965	72
PW107	1975	86
PW108	1970	73
PW109	1969	78
PW110	1969	87
PW111	1987	74
PW112	1969	84
PW113	1968	64
PW114	1968	86
PW115	1978	80
PW116	1976	49
PW117	1977	47
PW118	1978	71
PW119	1977	80
PW120	1979	77
PW121	1983	85
PW122	1981	70
PW123	1981	78
PW124	1981	76
PW125	1984	79
PW126	1985	82
PW127	1997	76
PW128	1997	87
PW129	1997	87
PW130	2006	87
PW132	2011	86
PW201	1970	67
PW202	1970	80
PW203	1975	84
PW204	1999	87
PW205	2004	71
PW206	2004	87
PW303	1976	68
PW304	1975	68
PW305	1978	70
PW306	1979	86
PW307	1967	66

# 5. ASSETS – LEVEL OF SERVICE

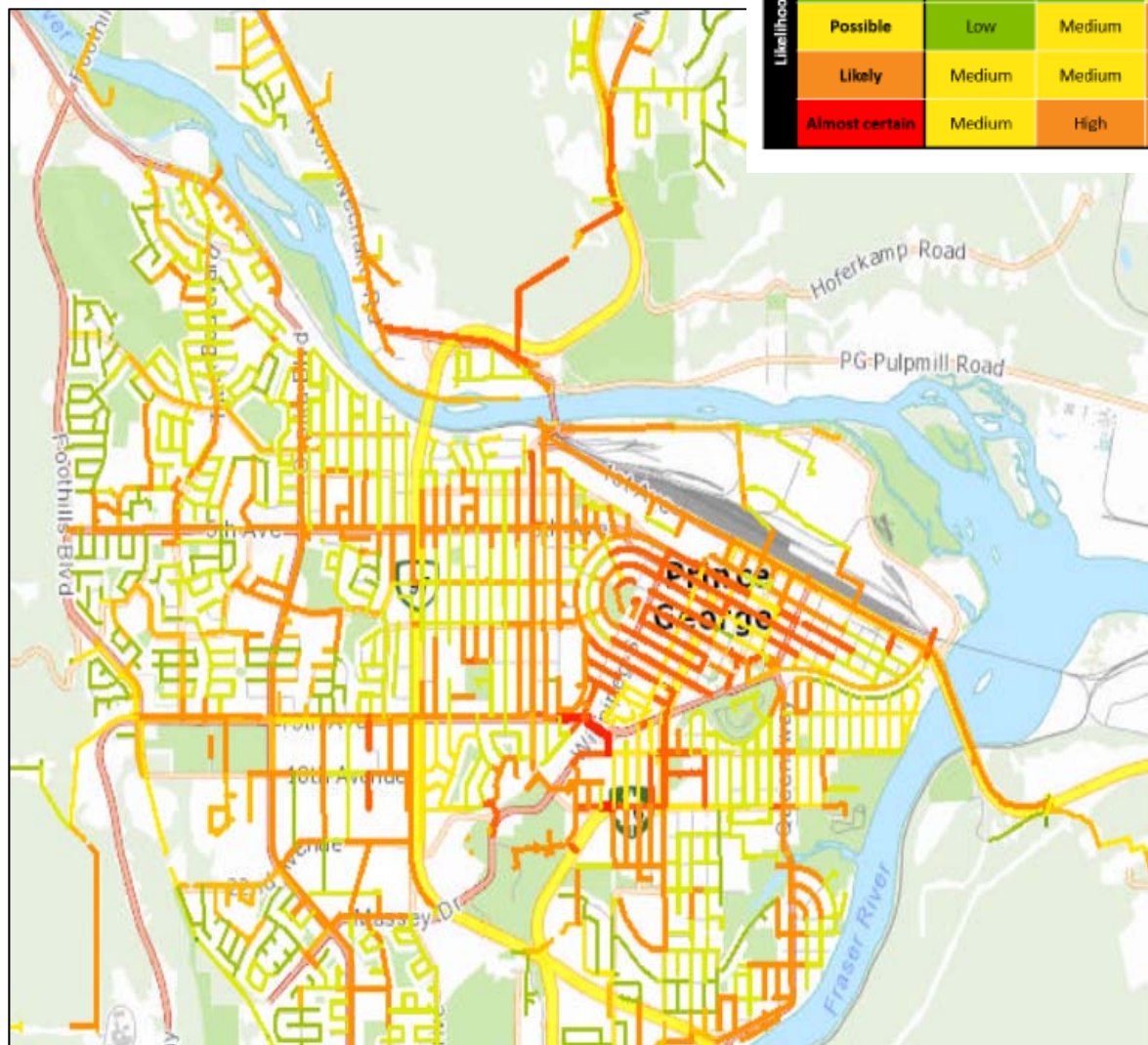


## 5. ASSETS – EXPENDITURES





# 5. ASSETS - RISK



		Consequence				
		Insignificant	Minor	Moderate	Major	Catastrophic
Likelihood	Rare	Low	Low	Medium	Medium	High
	Unlikely	Low	Low	Medium	Medium	High
	Possible	Low	Medium	High	High	High
	Likely	Medium	Medium	High	High	Very High
	Almost certain	Medium	High	High	Very High	Very High

<b>Low</b>	• Manage by routine procedures
<b>Medium</b>	• Planned action required
<b>High</b>	• Prioritised action required
<b>Very High</b>	• Immediate corrective action

## ▼ Asset Conditions

- Condition
- Consequence of Failure

## ▼ Risk of Failure

### ▼ Utilities

#### ▼ Water Main - ROF

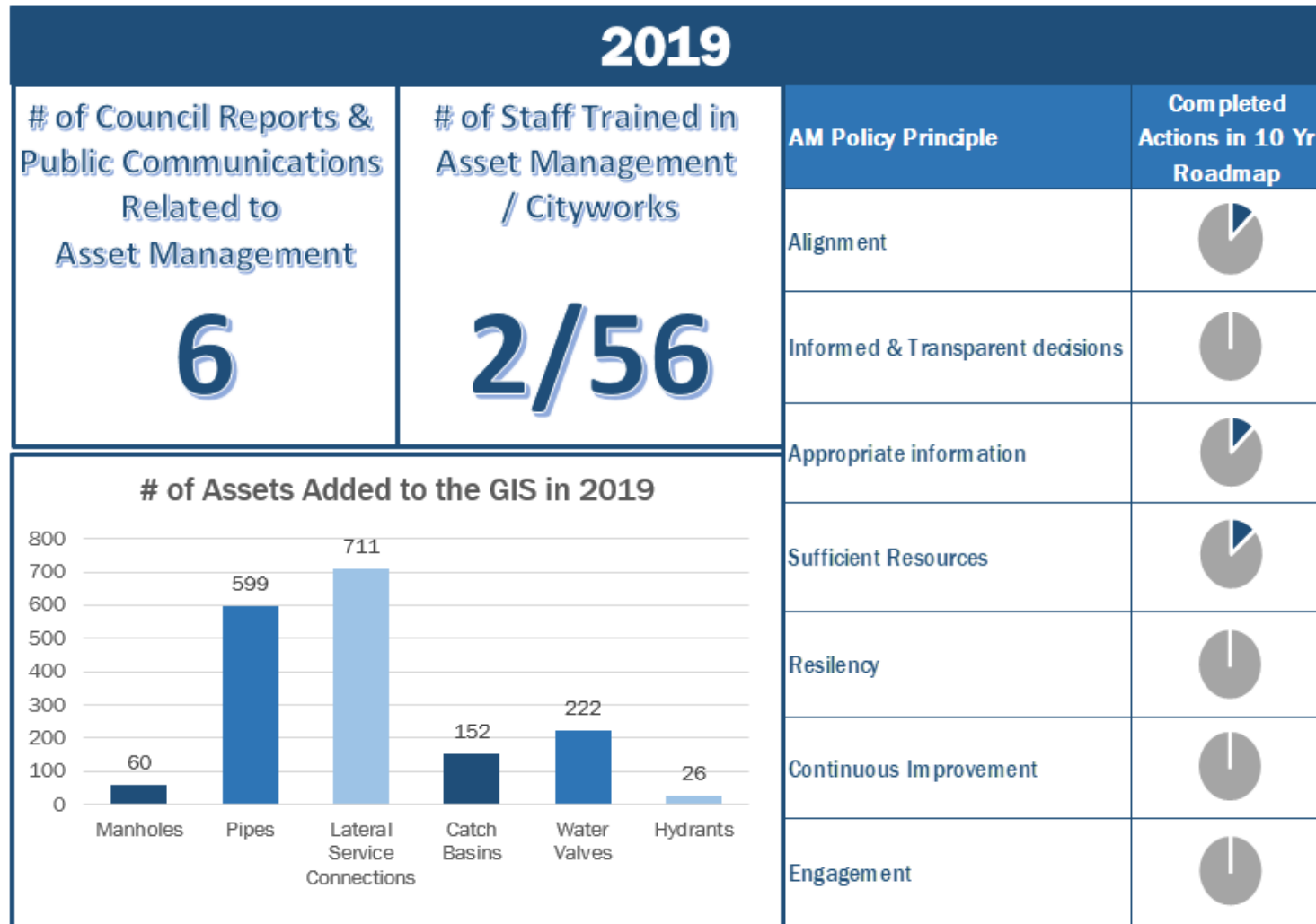
- 1
- 2
- 3
- 4
- 5
- 6
- 7
- 8
- 9
- 10



## 6. PLANNING



# 7. IMPLEMENTATION



# **SUSTAINABLE SERVICE DELIVERY IS THE GOAL OF ASSET MANAGEMENT**

