

Exhibit "B"

PLAN EPP101605

REFERENCE PLAN OF CONSOLIDATION OF CLOSED ROAD, PLAN EPP101604, AND LOT 3, PLAN EPP53690, ALL IN DISTRICT LOTS 4221 AND 4376, CARIBOO DISTRICT.

PURSUANT TO SECTION 100(1)(b) OF THE LAND TITLE ACT.

THIS PLAN LIES WITHIN INTEGRATED SURVEY AREA No. 39 PRINCE GEORGE, BC, NAD83 (CSRS) 4.0.0.BC.1

BCGS 93G.097

15 7.5 0 15 30 45 60
THE INTENDED PLOT SIZE OF THIS PLAN IS 864mm IN WIDTH BY 590mm IN HEIGHT (D SIZE) WHEN PLOTTED AT A SCALE OF 1:750.

ALL DISTANCES ARE IN METRES AND DECIMALS THEREOF. GRID BEARINGS ARE DERIVED FROM OBSERVATIONS BETWEEN GEODETIC CONTROL MONUMENTS 86H1775 AND 86H1759.

THE UTM COORDINATES AND ESTIMATED ABSOLUTE ACCURACY ACHIEVED HAVE BEEN DERIVED FROM MASCT PUBLISHED COORDINATES AND STANDARD DEVIATIONS FOR GEODETIC CONTROL MONUMENT 86H1775.

THIS PLAN SHOWS HORIZONTAL GROUND-LEVEL DISTANCES UNLESS OTHERWISE SPECIFIED, TO COMPUTE GRID DISTANCES, MULTIPLY GROUND-LEVEL DISTANCES BY THE COMBINED FACTOR OF 0.999996 WHICH HAS BEEN DERIVED FROM CONTROL MONUMENT 86H1775.

NOTE: THIS PLAN SHOWS ONE OR MORE WITNESS POSTS WHICH ARE NOT SET ON THE TRUE CORNERS.

SOME POSTS AND LINES ARE EXAGGERATED FOR CLARITY.

LEGEND

SYMBOLS		DESCRIPTION
○	○	CONTROL MONUMENT
●	●	STANDARD CAPPED POST
○	○	STANDARD IRON POST
BT		BEARING TREE
UT		UNABLE TO TIE
DL		TITLED NATURAL BOUNDARY AND PRESENT NATURAL BOUNDARY
EAA		ESTIMATED ABSOLUTE ACCURACY

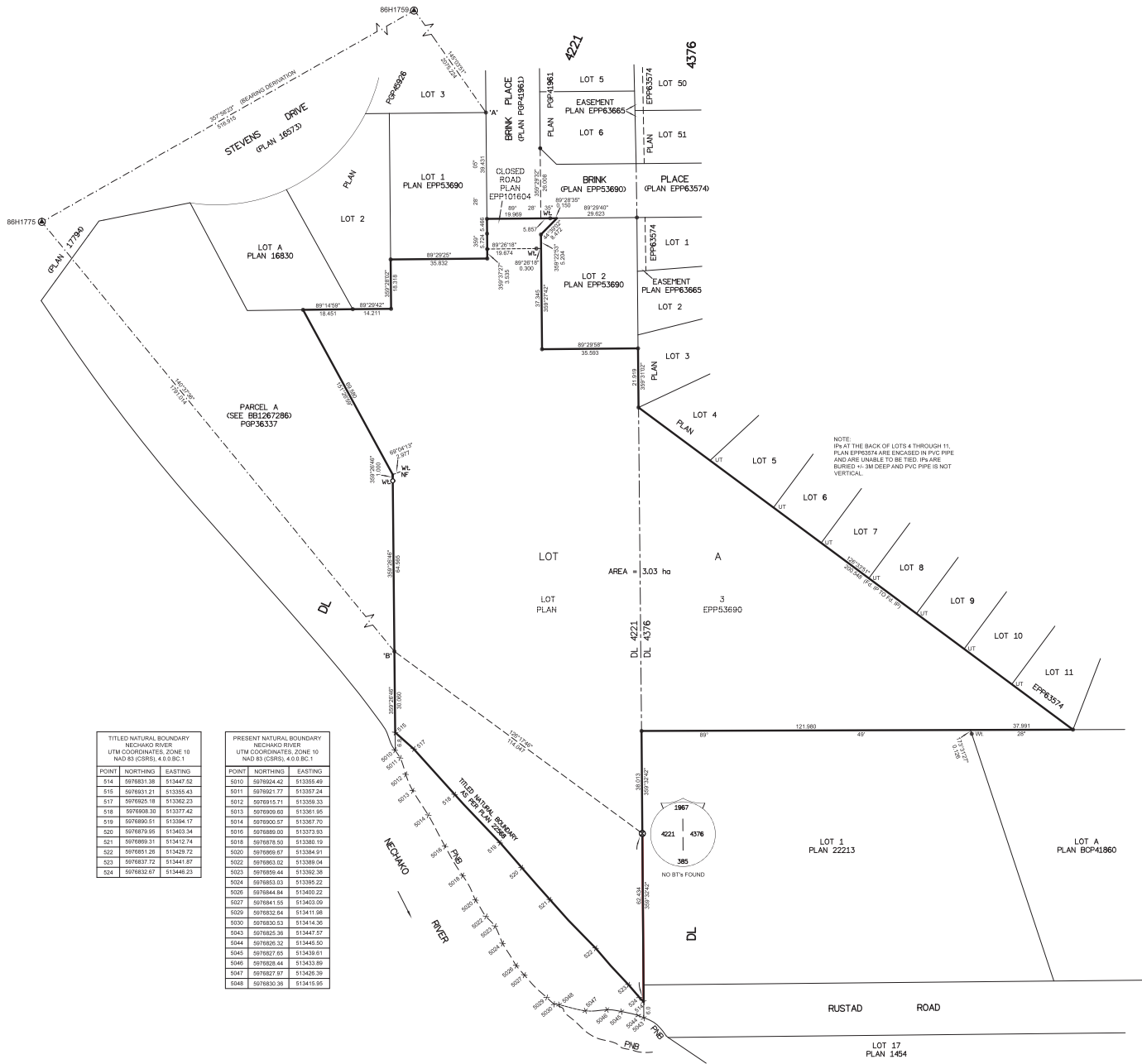
GEOREFERENCING POSITIONS				
UTM COORDINATES				
ZONE 10, NAD 83 (CSRS), 4.0.0.BC.1				
STATION	NORTHING	EASTING	EAA	
F4 IP 'A'	5977190.99	513389.07	0.09	
F4 IP 'B'	5976961.26	513355.14	0.09	



THE FIELD SURVEY REPRESENTED BY THIS PLAN WAS COMPLETED ON THE 27th DAY OF MARCH, 2023

SHAUNA C. GOERTZEN, BCLS 798

THIS PLAN LIES WITHIN THE REGIONAL DISTRICT OF FRASER-FORT GEORGE.



TITLED NATURAL BOUNDARY		
NECHAKO RIVER		
UTM COORDINATES, ZONE 10		
NAD 83 (CSRS), 4.0.0.BC.1		
POINT	NORTHING	EASTING
S14	5976951.38	513447.92
S15	5976951.21	513355.43
S17	5976925.18	513392.23
S18	5976936.35	513377.42
S19	5976850.51	513354.17
S20	5976879.95	513403.34
S21	5976969.31	513412.74
S22	5976951.26	513426.72
S23	5976837.72	513441.67
S24	5976832.67	513446.23

PRESENT NATURAL BOUNDARY		
NECHAKO RIVER		
UTM COORDINATES, ZONE 10		
NAD 83 (CSRS), 4.0.0.BC.1		
POINT	NORTHING	EASTING
S010	5976924.42	513355.49
S011	5976921.77	513357.24
S012	5976915.71	513356.33
S013	5976909.60	513351.65
S014	5976900.97	513367.70
S016	5976889.00	513373.93
S018	5976876.50	513380.19
S020	5976909.67	513384.91
S022	5976903.02	513389.04
S023	5976895.44	513392.38
S024	5976883.03	513395.22
S026	5976884.84	513400.22
S027	5976841.55	513402.09
S029	5976832.64	513411.68
S030	5976830.53	513414.36
S043	5976825.39	513447.57
S044	5976826.32	513446.50
S045	5976827.65	513439.61
S046	5976828.44	513433.89
S047	5976827.97	513429.39
S048	5976830.39	513419.95

RUSTAD ROAD

LOT 17
PLAN 1454

McElhannay
MCELHANNAY ASSOCIATES
LAND SURVEYING LTD.
Suite 112
250 North Nechako Road
Prince George BC
Canada V2N 1K1
Tel 250 561 2229
Fax 250 561 2229