



April 14, 2020

Via Email: kali.holahan@princegeorge.ca

Kali Holahan
City of Prince George
1100 Patricia Boulevard
Prince George, BC V2L 3V9

Dear Ms. Holahan:

Subject: Request for Concurrence for a TELUS Wireless Communications Facility

TELUS Site:	BC104270
Proposed Location:	2527 Redfield Place, Prince George, BC
Description:	19.1 metre monopole / wireless communications facility

Please be advised that TELUS has completed the public consultation process, following Innovation, Science and Economic Development Canada (ISED), formerly Industry Canada's, CPC Procedures as it relates the proposed wireless antenna installations in the above noted subject line. TELUS is respectfully requesting, from the City of Prince George, concurrence for the proposal to build a monopole telecommunication facility in an effort to provide improved TELUS wireless communications services to this area of Prince George. Enclosed please find evidence of the TELUS' efforts regarding this public consultation process.

On January 29, 2020, an Information Package was submitted to the City of Prince George formalizing the initiation of the consultation process with the City. Please see **Appendix 1: Information Package**.

On February 27, 2020, notification packages were mailed to property owners within a radius of three times the tower height (approximately 60 metres) to advise them of the proposal. Please see **Appendix 2: Affidavit of Notification Package**.

On March 27, 2020 the consultation period ended. During the consultation period TELUS did not receive any comments from the public.

As per Section 6.5.4 of the Zoning Bylaw No. 7850, the City requires landscaped buffer/screening to provide a visual barrier at the human scale and add visual interest to the site. We have included the landscape architect design that is appended at the end of the prelim drawings and revised the equipment cabinet type and quantity as per equipment engineering requirements. Please see **Appendix 3: Revised Drawings**.

TELUS is committed to providing reliable wireless service to Prince George. If the City of Prince George concurs with the proposed wireless communications facility project, please find in **Appendix 4: Sample Resolution**, a sample resolution which may be used. Should you require any additional information, please do not hesitate to contact us 604-620-0877 or by e-mail at tawny@cypresslandservices.com.

Tawny Verigin
Manager of Government Affairs

A handwritten signature in blue ink, appearing to read 'Tawny Verigin', is positioned below the printed name and title.

Cypress Land Services
Agents for TELUS

Appendix 1: Information Package



Cypress Land Services Inc.

Suite 1051 – 409 Granville Street

Vancouver, BC V6C 1T2

Telephone: 604.620.0877

Facsimile: 604.620.0876

Website : www.cypresslandservices.com

January 29, 2020

Via Email: kali.holahan@princegeorge.ca

Kali Holahan
City of Prince George
1100 Patricia Boulevard
Prince George, BC V2L 3V9,

Dear Kali Holahan,

Subject: TELUS Communication Inc. Telecommunications Facility Proposal Information Package
PID: 030-587-000
Legal: LOT 1 DISTRICT LOT 4377 CARIBOO DISTRICT PLAN EPP56990
Address: 2527 Redfield Place, Prince George, BC
Coordinates: 53.947131°, -122.760358°
TELUS Site: BC104270-3 "Prince George – Northwood Pulp Mill/Northwood Offramp"

Overview

Cypress Land Services Inc., in our capacity as agents to TELUS, is submitting this information package to formalize the consultation process related to the installation and operation of a telecommunications facility. The proposed site will improve wireless services to the immediate area.

Proposed Site

The subject property is located at 2527 Redfield Place, Prince George, BC. The premise is zoned M1 Light Industrial and consists vacant, flat, sandy soiled land. It is proposed to construct at 19.1-metre-high wood utility pole antenna installation in the south-east corner of the property to improve telecommunications services within a few kilometres. Please see **Schedule A: Tower Site Location**.

Rationale for Site Selection

TELUS seeks to maintain and improve high quality, dependable network services. In order to improve network performance, TELUS is seeking to add the proposed communications installation to improve service to areas on the north end of Prince George.

The proposed site is a result of many considerations. Existing structures, including towers, were initially reviewed during the site selection process. After careful examination, it has been determined there are no viable existing structures in the area that would be suitable for the operations of TELUS' network equipment. The proposed location is considered to be appropriate given the installation will be located on an industrial property, surrounded by other industrial lots. The installation will not be able to host antennas from other users due to the limited structural capacity of the pole.

Tower Proposal Details

TELUS is proposing to install a 19.1-metre-high wood utility pole with three (3) antennas and a lightning rod on the top of the pole as well as an equipment enclosure mounted to the bottom of the pole approx. 3.5 metres above ground. TELUS has completed preliminary design plans, please see **Schedule B: Preliminary Plans**. These preliminary design plans are subject to final engineered design, land survey and approval of Transport Canada. Transport Canada approval may require tower lighting and/or marking.

Consultation Process

It is our understanding that Prince George does not have an adopted Telecommunications policy. Innovation, Science and Economic Development Canada (ISED), formerly Industry Canada, requires all proponents to consult with the local land use authority and public, notwithstanding that ISED has exclusive jurisdiction in the licensing of telecommunication sites, such as the proposed tower. Following ISED's requirements, TELUS would like to initiate Default Public Consultation Process (as described in the Industry Canada circular, CPC-2-0-03, issue 5, commonly referred to as the "CPC"). Information on the "CPC" consultation process may be found on-line at: <http://www.ic.gc.ca/eic/site/smt-gst.nsf/eng/sf08777.html>.

In order to obtain comments, concerns or questions in regard to the proposed tower site, the CPC requires TELUS to send out notification packages to all properties located within three times the height of the proposed tower (approx. 60 metres). This comment period is a minimum of 30 days. We expect the public consultation process to commence in February 2020.

At the conclusion of the consultation process, TELUS will prepare a summary of comments received from the community as well as the replies provided by TELUS. TELUS is requesting that, subsequent to the completed consultation process a letter or resolution of concurrence will be issued by Prince George.

Health and Safety

Health Canada's Safety Code 6 regulations are applicable to this, and all, telecommunications sites. Safety Code 6 seeks to limit the public's exposure to radiofrequency electromagnetic fields and ensures public safety. Additional information on health and safety may be found on-line at:

Health Canada:

http://www.hc-sc.gc.ca/ewh-semt/pubs/radiation/radio_guide-lignes_direct-eng.php

Concurrence Requirements

In order to complete the consultation process, TELUS will be requesting concurrence from the City in a form acceptable by ISED.

Conclusion

Please consider this information package as the official commencement of consultation with the City. TELUS is committed to working with the City and the community throughout the consultation process.

We look forward to working together during this process. Please do not hesitate to contact us by phone at 604-620-0877 or by email at tawny@cypresslandservices.com.

Thank you in advance for your assistance and consideration.

Sincerely,

CYPRESS LAND SERVICES

Agents for TELUS

A handwritten signature in blue ink, appearing to read 'Tawny Verigin', with a stylized flourish at the end.

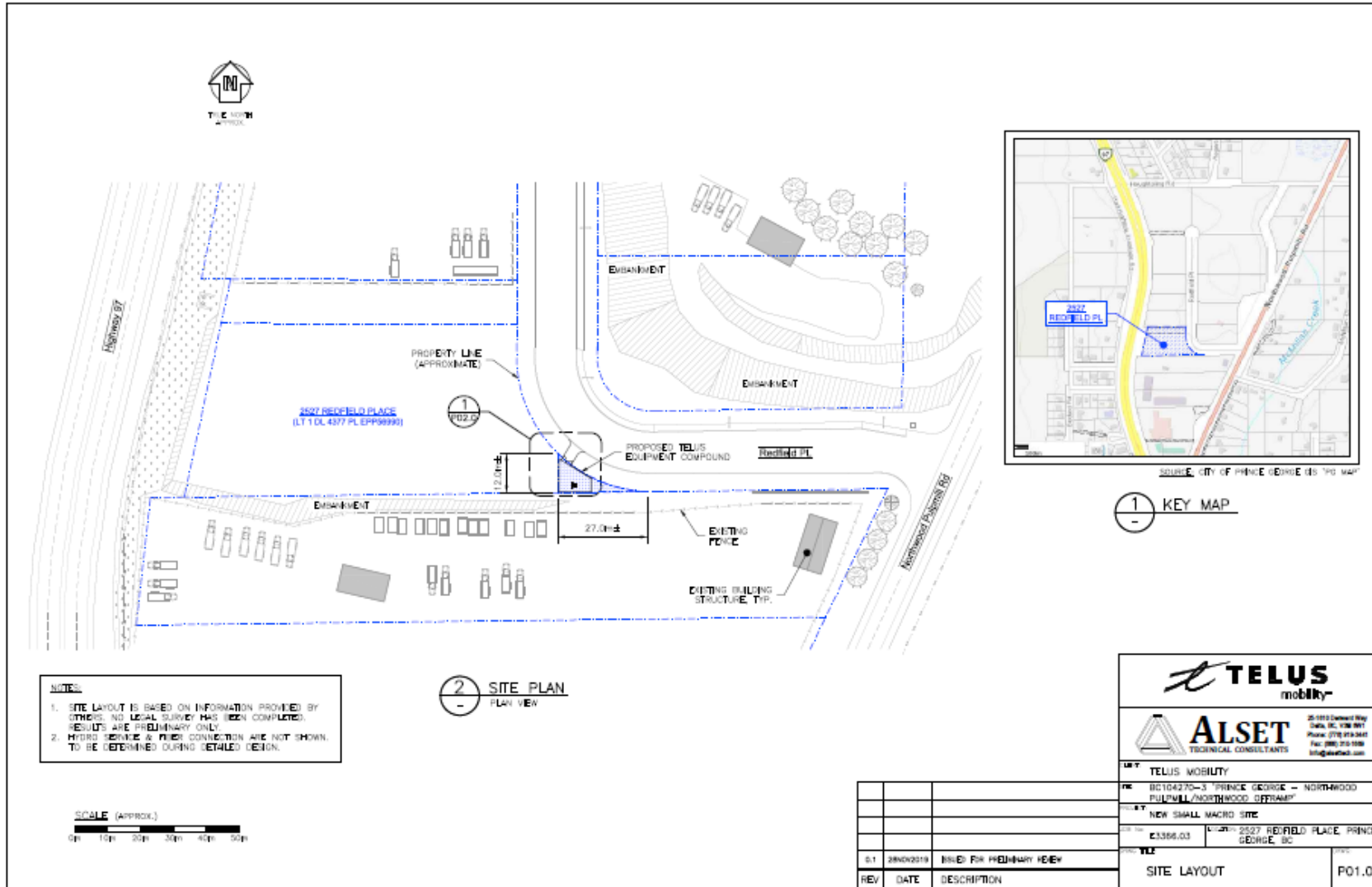
Tawny Verigin
Manager of Government Affairs

cc: Cheryl Bilyk, TELUS

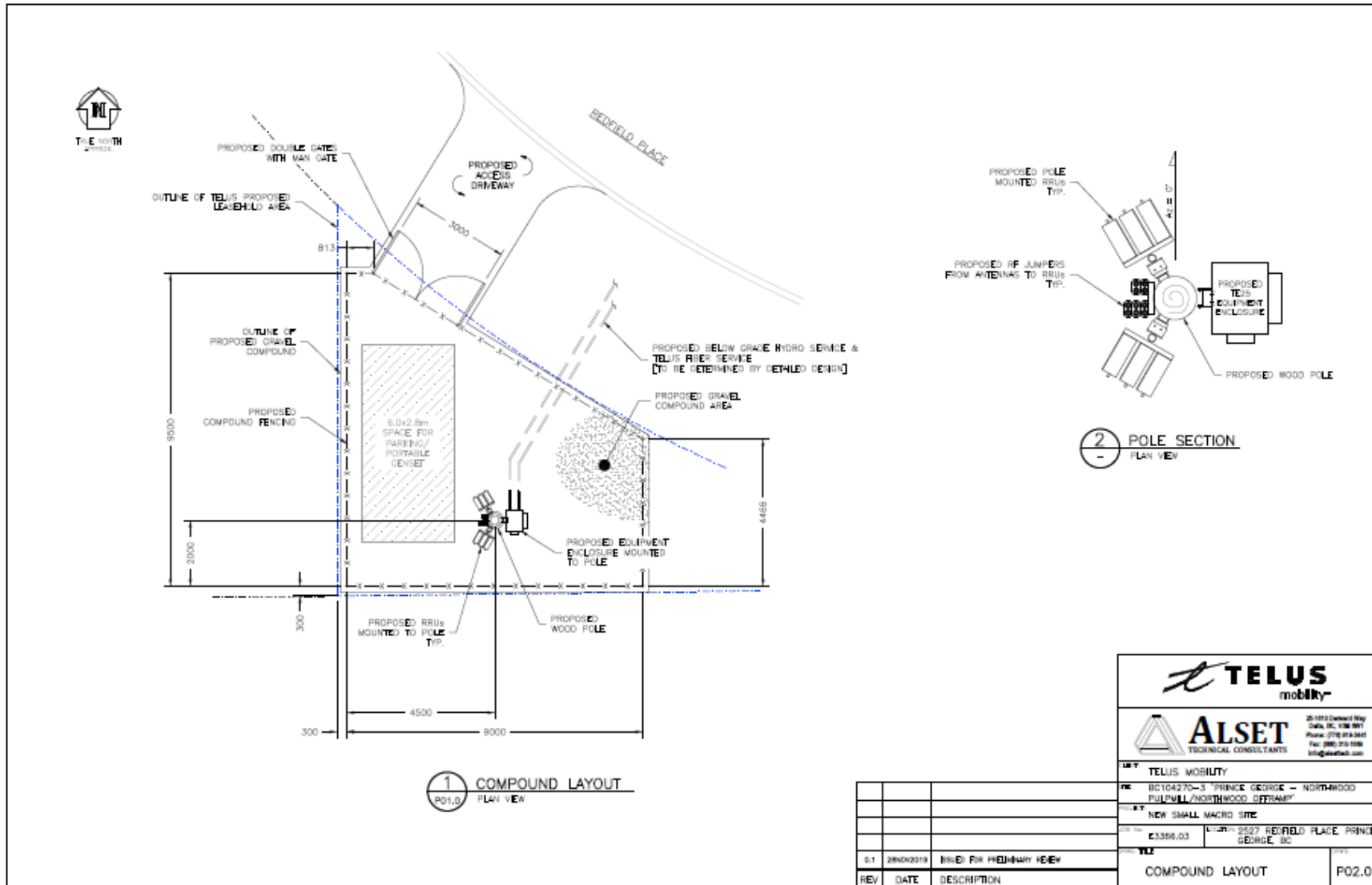
**SCHEDULE A
POLE LOCATION**



SCHEDULE B PRELIMINARY DESIGN PLANS – SITE PLAN



SCHEDULE B PRELIMINARY DESIGN PLANS – COMPOUND PLAN



SCHEDULE B PRELIMINARY DESIGN PLANS – TOWER PROFILE

NOTE:

POLE IS SHOWN FOR CONCEPTUAL DESIGN PURPOSES ONLY. POLE CLASS & SETTING DEPTH TO BE BASED ON FINAL DESIGN & ANTENNA LOADING SPECIFIED BY CLIENT.

TOWER & ASSOCIATED COMPONENTS TO BE DESIGNED IN ACCORDANCE WITH LATEST EDITION OF TELUS CONSTRUCTION SPECIFICATIONS.

DESIGN OF POLE & ALL ASSOCIATED COMPONENTS TO CONFORM TO THE LATEST EDITION OF APPLICABLE CODES & STANDARDS.

WIRING & LIGHTING TO BE IN ACCORDANCE WITH TRANSPORT CANADA REQUIREMENTS.

ANTENNA LOADING CHART

HEIGHT		ANTENNA		TX-LINE		STATUS	OWNER
(m)	(ft)	QTY	DESCRIPTION	QTY	TYPE		
59.1	18.0	3	ASH516RDV06	90/180/340	36 RF JUMPERS	PROPOSED	TELUS
11.5	3.5	12	RRUs	---	DC/FIBER JUMPERS	PROPOSED	TELUS
11.5	3.5	1	TECS EQUIPMENT ENCLOSURE	---	---	PROPOSED	TELUS

NOTE: SPECIFIED LOADING IS PRELIMINARY ONLY AND IS SUBJECT TO REVISION PER FINAL RF DESIGN.

EQUIPMENT PROPERTIES

EQUIPMENT ENCLOSURE

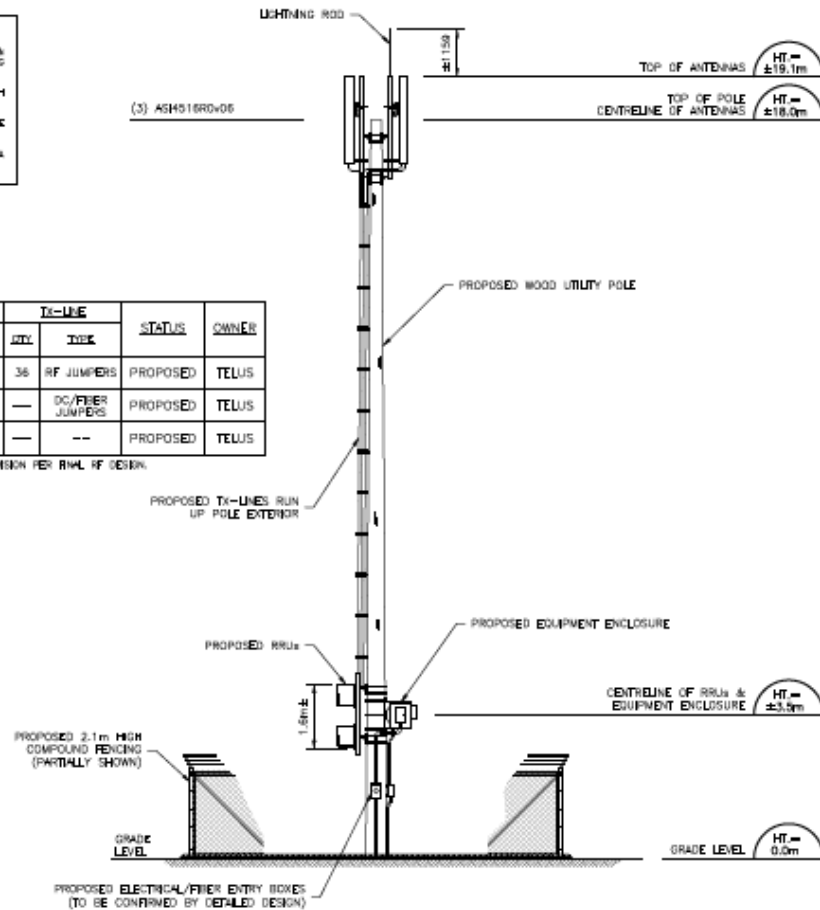
MODEL: TE-25
DIMENSIONS: 0.62x0.64x0.52m (HxWxD, Approx.)
WEIGHT: 80 kg (Approx.)

ANTENNA

MODEL: ASH516RDV06
DIMENSIONS: 2.10x0.50x0.21m (LxWxD)
WEIGHT: 43.0 kg

RRU

MODEL: T80
DIMENSIONS: 0.46x0.39x0.15m (LxWxD)
WEIGHT: 26 kg




REV	DATE	DESCRIPTION
0.1	28NOV2019	ISSUED FOR PRELIMINARY REVIEW
TELUS mobility		
ALSET TECHNICAL CONSULTANTS 35-1010 Denison Way Delta, BC V3M 0H1 Phone: (778) 919-3443 Fax: (888) 375-1888 info@alsetech.com		
TELUS MOBILITY		
BC104270-3 "PRINCE GEORGE - NORTHWOOD PULP MILL/NORTHWOOD OFFRAMP"		
NEW SMALL MACRO SITE		
CDR No: C3366.03	LOCATION: 2527 REDFIELD PLACE, PRINCE GEORGE, BC	
DATE: YLL	SITE ELEVATION	PO3.0

Appendix 2: Affidavit of Notification Package

Affidavit of Cypress Land Services


I, Tawny Verigin, Manager of Government Affairs, in the City of Vancouver in the Province of B.C., make an Oath and say:

1. THAT I caused to be sent by regular mail, a notification letter, as included in Appendix A, to property owners, occupants and other recipients, as listed in Appendix B, on February 25, 2020.



Tawny Verigin, Manager of Government Affairs
Cypress Land Services

Sworn/Affirmed/Declared before me at the City of Vancouver, in the Province of B.C., this 25th day of February 2020.



(Commissioner's Signature)

A Commissioner for Taking Affidavits for the Province of B.C.

Brent Philip Laoun
A Commissioner for Taking Affidavits
For British Columbia
Cypress Land Services Inc.
1051 – 409 Granville Street
Vancouver, BC V6C 1T2
Tel: 604.620.0877
Expires on: May 31, 2022

(Commissioner's stamp or printed name and expiry date)

Appendix A: Notification Letter



Dear Owner/Occupant,

February 25, 2020

Please accept this notification regarding proposed TELUS Communications Inc. ("TELUS") wireless service improvements in your community.

Subject: Telecommunications Facility Proposal
PID: 030-587-000
Legal: LOT 1 DISTRICT LOT 4377 CARIBOO DISTRICT PLAN EPP56990
Address: 2527 Redfield Place, Prince George, BC
Coordinates: 53.947131° N, -122.760358° W
TELUS Site: BC104270-3 "Prince George – Northwood Pulp Mill/Northwood Offramp"

What is TELUS Proposing?

TELUS seeks to continue to provide high quality wireless telecommunications services to communities throughout British Columbia. Increasingly, communities depend on wireless voice, data and internet communications for business, personal enjoyment and personal security reasons. In order to ensure improved wireless services to Prince George, TELUS is proposing to add a telecommunications facility.

The new facility is proposed to be located 2527 Redfield Place, Prince George, BC. TELUS proposing to construct at 19.1-metre-high wood utility pole antenna installation in the south-east corner of the property to improve telecommunications services within the immediate area.

Regulatory Authority

Telecommunication providers are required by Innovation, Science, and Economic Development Canada (ISED), formerly Industry Canada, to consult with the local municipality and the general public regarding new installations. ISED does have exclusive jurisdiction over the approval and placement of telecommunications installations.

The consultation process will provide an opportunity for residents, stakeholders and landowners to obtain detailed information regarding the proposal and to provide comments for consideration. Any inquiries that are received as a result of this notification will be logged and submitted to the City of Prince George and ISED as part of our application for concurrence.

Local Municipality

The City of Prince George does not have a telecommunications consultation process to guide the consultation process. As such, ISED's Client Procedures Circular CPC-2-0-03 (CPC) consultation process will be followed. This process requires all properties within three times the structure height be notified (in this instance those within approx. 60.0 metres). This notification is to provide the opportunity to obtain information regarding the proposal, ask questions and provide comments. The closing period for comments to be received by TELUS is **March 27, 2020.**

Location

The new facility is proposed to be located at 2527 Redfield Place, Prince George, BC at the coordinates 53.947131° N, -122.760358° W. The facility will be located in the south-east corner of the property. To confirm, there are no existing structures in the vicinity of the proposed tower to collocate antennas on. No other carrier will be able to add antennas to the structure.



Safety Code 6

ISED requires all wireless carriers to operate in accordance with Health Canada's safety standards. TELUS attests that the installation described in this notification package will be installed and operated on an ongoing basis so as to comply with Health Canada's Safety Code 6, as may be amended from time to time.

Site Access

Access will be constructed directly off Redfield Place. Construction is expected to take approximately two months. To confirm, there are no existing structures in the vicinity of the proposed tower to collocate antennas on.

Environment

TELUS confirms that the installation is excluded from environmental assessment under the Canadian Environmental Assessment Act. Any municipal environmental regulations will be followed.

Transport Canada

The tower will be constructed to include aeronautical markings or lighting required by Transport Canada. Comments are pending.

Structural Considerations

TELUS confirms that the antenna structure described in this notification package will apply good engineering practices including, structural adequacy during construction.

General Information

General information relating to antenna systems is available on ISED's Spectrum Management and Telecommunications website: <http://www.ic.gc.ca/eic/site/ic-gc.nsf/eng/07422.html>

Contacts:

TELUS

c/o Tawny Verigin of Cypress Land Services

Agents for TELUS

Suite 1051, 409 Granville Street, Vancouver, BC V6C 1T2

Phone: 1-855-301-1520

Fax: 604-620-0876

Email: publicconsultation@cypresslandservices.com

ISED

Northern British Columbia and Yukon District Office

280 Victoria Street, Room 203, Prince George BC V2L 4X3

Phone: 250-561-5291 or 1-800-667-3780

Fax: 250-561-5290

Email: ic.spectrumprincegeorge-princegeorgespectre.ic@canada.ca

(By appointment only)

City of Prince George

Kali Holahan, Planner

Planning and Development

1100 Patricia Blvd, Prince George, BC V2L 3V9

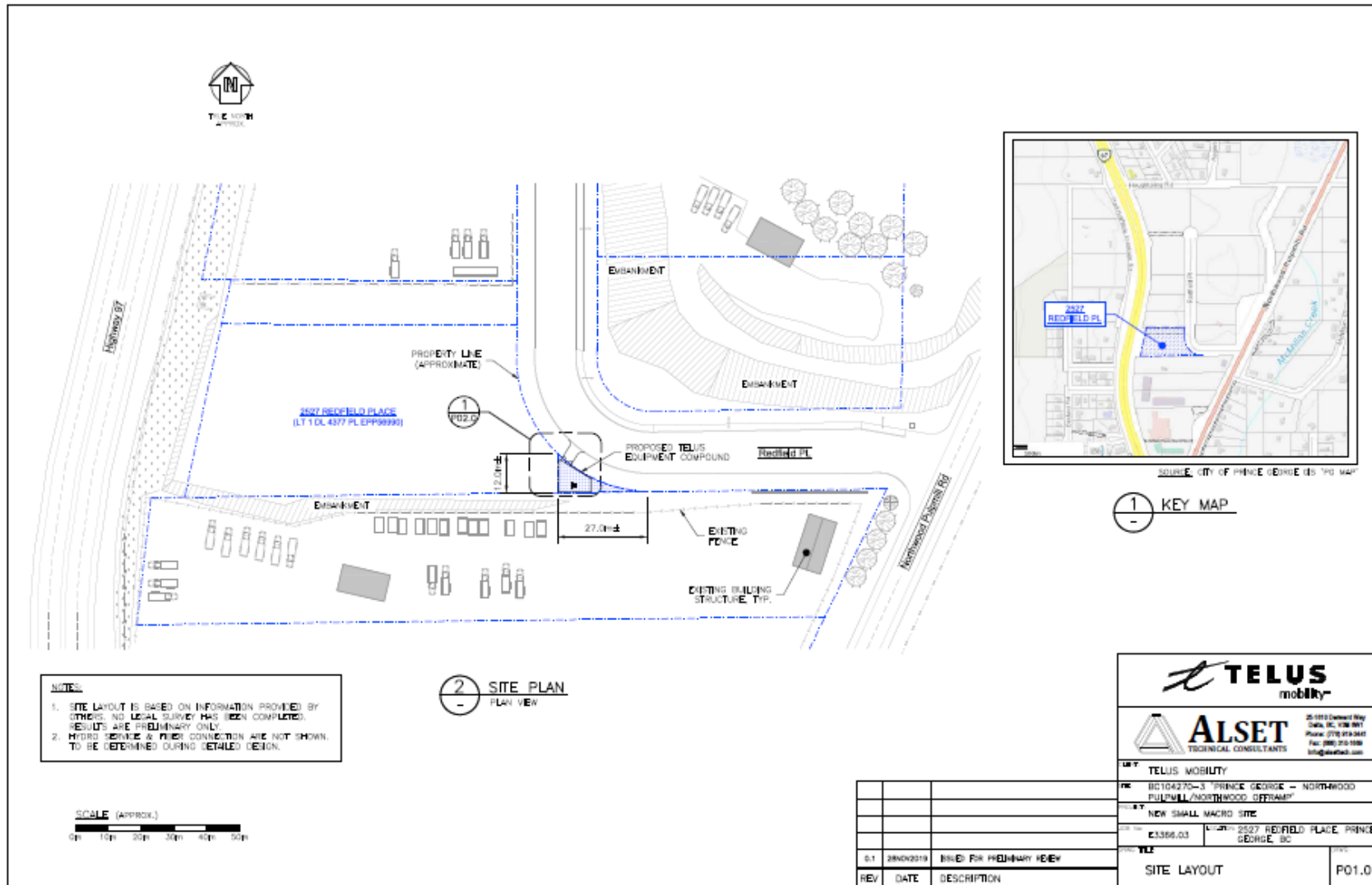
Phone: 250.561.7791

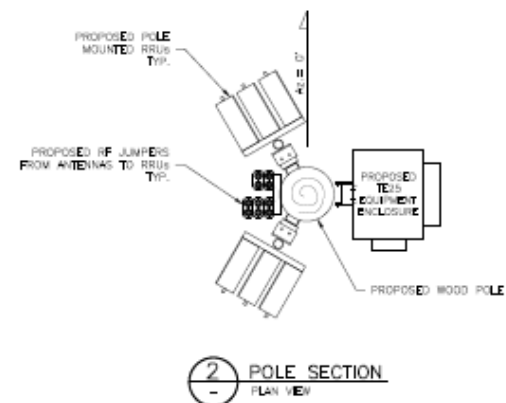
Email: Kali.Holahan@princegeorge.ca

If you have any specific questions regarding the proposal, please feel welcome to contact the above.



PRELIMINARY DESIGN PLANS – SITE PLAN





				PK	B0104375-3 "PRINCE GEORGE - NORTHWOOD PULPMLD/NORTHWOOD OFFRAMP"						
				SIT	NEW SMALL MACRO SITE						
				PROJ NO.	E3386.03		L	-1	2507 SEWFIELD PLACE PRINCE GEORGE, BC		
				TYPE							
5.1	28NOV2019	JIMEL FOR	PRIORITY REVIEW								
REV	DATE	DESCRIPTION			COMPOUND LAYOUT						P02.0

PRELIMINARY DESIGN PLANS – TOWER PROFILE

POLE NOTES

POLE IS SHOWN FOR CONCEPTUAL DESIGN PURPOSES ONLY. POLE CLASS & SETTING BOTH TO BE BASED ON FINAL DESIGN & ANTENNA LOADING SPECIFIED BY CLIENT.

TOWER & ASSOCIATED COMPONENTS TO BE DESIGNED IN ACCORDANCE WITH LATEST EDITION OF TELUS CONSTRUCTION SPECIFICATIONS.

DESIGN OF POLE & ALL ASSOCIATED COMPONENTS TO CONFORM TO THE LATEST EDITION OF APPLICABLE CODES & STANDARDS.

WAPPING & LIGHTING TO BE IN ACCORDANCE WITH TRANSPORT CANADA REQUIREMENTS.

ANTENNA LOADING CHART

HEIGHT		ANTENNA		TX-LINE		STATUS	OWNER
(m)	(ft)	QTY	DESCRIPTION	AZIMUTH	QTY		
59.1	18.0	3	ASH516RDV06	90/180/340	36	RF JUMPERS	PROPOSED TELUS
11.5	3.5	12	RRUs	--	--	DC/FIBER JUMPERS	PROPOSED TELUS
11.5	3.5	1	TECH EQUIPMENT ENCLOSURE	--	--	PROPOSED	TELUS

NOTE: SPECIFIED LOADING IS PRELIMINARY ONLY AND IS SUBJECT TO REVISION PER FINAL RF DESIGN.

EQUIPMENT PROPERTIES

EQUIPMENT ENCLOSURE

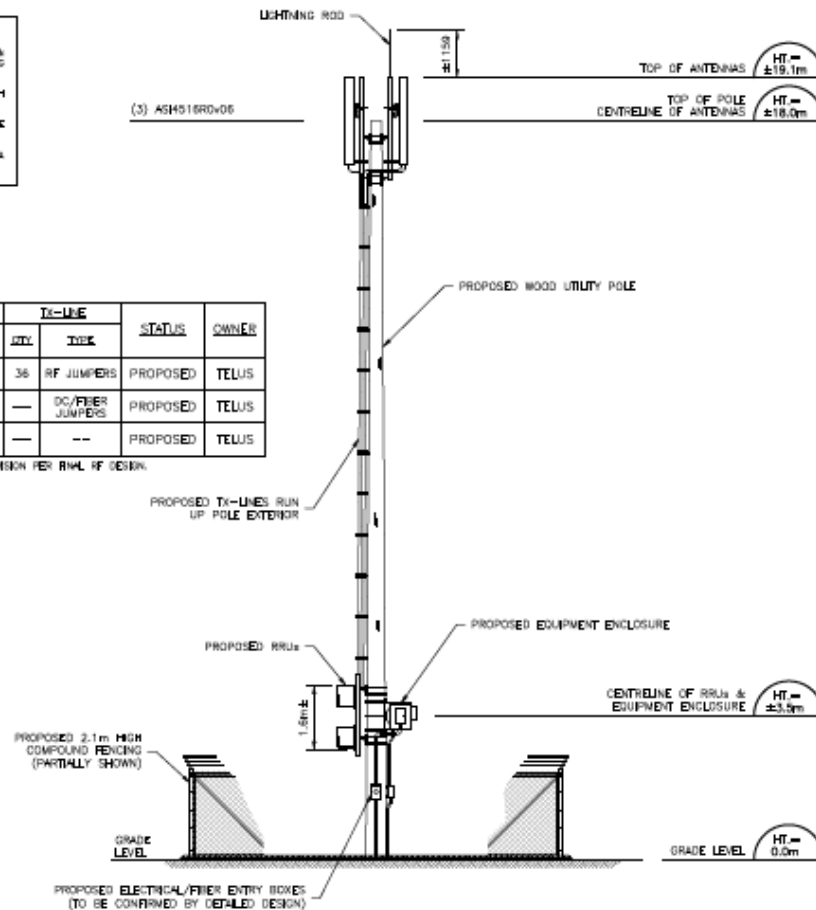
MODEL: TE-25
DIMENSIONS: 0.62x0.54x0.52m (LxWxD, Approx.)
WEIGHT: 80 kg (Approx.)

ANTENNA

MODEL: ASH516RDV06
DIMENSIONS: 2.10x0.50x0.21m (LxWxD)
WEIGHT: 43.0 kg

RRU

MODEL: T80
DIMENSIONS: 0.49x0.39x0.15m (LxWxD)
WEIGHT: 26 kg



1 SITE ELEVATION
ELEVATION VIEW

REV	DATE	DESCRIPTION
0.1	28NOV2019	ISSUED FOR PRELIMINARY REVIEW
		
		
TELUS MOBILITY		
PRJ: BC104270-3 "PRINCE GEORGE – NORTHWOOD PULP MILL/NORTHWOOD OFFRAMP"		
PROJ: NEW SMALL MACRO SITE		
CDR: E3366.03		LOCATION: 2527 REDFIELD PLACE, PRINCE GEORGE, BC
DATE:		REV:
SITE ELEVATION		PO3.0

PHOTO-SIMULATION

BEFORE



AFTER



Artist's rendering of proposed facility looking east from Highway 97.

Note: Photo-simulation is for conceptual purposes only. Proposed design is subject to change based on final engineer plans.



COMMENT SHEET
TELECOMMUNICATIONS FACILITY PROPOSAL
PID: 030-587-000

LEGAL: LOT 1 DISTRICT LOT 4377 CARIBOO DISTRICT PLAN EPP56990

ADDRESS: 2527 REDFIELD PLACE, PRINCE GEORGE, BC

COORDINATES: 53.947131°, -122.760358°

TELUS SITE: BC104270-3 "PRINCE GEORGE – NORTHWOOD PULP MILL/NORTHWOOD OFFRAMP"

1. Do you feel this is an appropriate location for the proposed facility?

- ☐ Yes
☐ No

Comments _____

2. Are you satisfied with the appearance / design of the proposed facility? If not, what changes would you suggest?

- ☐ Yes
☐ No

Comments _____

3. Additional Comments _____

Please provide your name and full mailing address if you would like to be informed about the status of this proposal. This information will not be used for marketing purposes; however, your comments will only be used by TELUS in satisfying ISED's consultation requirements. The closing period for comments to be received by TELUS is **March 27, 2020**.

Name _____
(Please print clearly)
Email Address _____
Mailing Address _____

TELUS c/o Cypress Land Services Inc.
Suite 1051, 409 Granville Street, Vancouver, BC V6C 1T2
Attention: Tawny Verigin, Manager of Government Affairs
Thank you for your input.

Appendix B: List of Property Owners, Occupants and Other Recipients

CURBSIDE HOLDINGS LTD
ATTN ANDRE FAUCHER 2545 REDFIELD PL
PRINCE GEORGE BC V2K 5R6

ACME PARKING LOT MAINTENANCE LTD
1960 ROBERTSON RD
PRINCE GEORGE BC V2N 1X6

ISED
NORTHERN BRITISH COLUMBIA AND
YUKON DISTRICT OFFICE
280 VICTORIA STREET, ROOM 203
PRINCE GEORGE BC V2L 4X3

OCCUPANT
2545 REDFIELD PL
PRINCE GEORGE BC

OCCUPANT
2527 REDFIELD PL
PRINCE GEORGE BC

CYPRESS LAND SERVICES
AGENTS FOR TELUS
SUITE 1051, 409 GRANVILLE STREET,
VANCOUVER, BC V6C 1T2

OCCUPANT
2536 REDFIELD PL
PRINCE GEORGE BC

YELLOWHEAD ROAD & BRIDGE (FORT
GEORGE) LTD
9A-1750 QUINN ST S PRINCE GEORGE BC
V2N 1X3

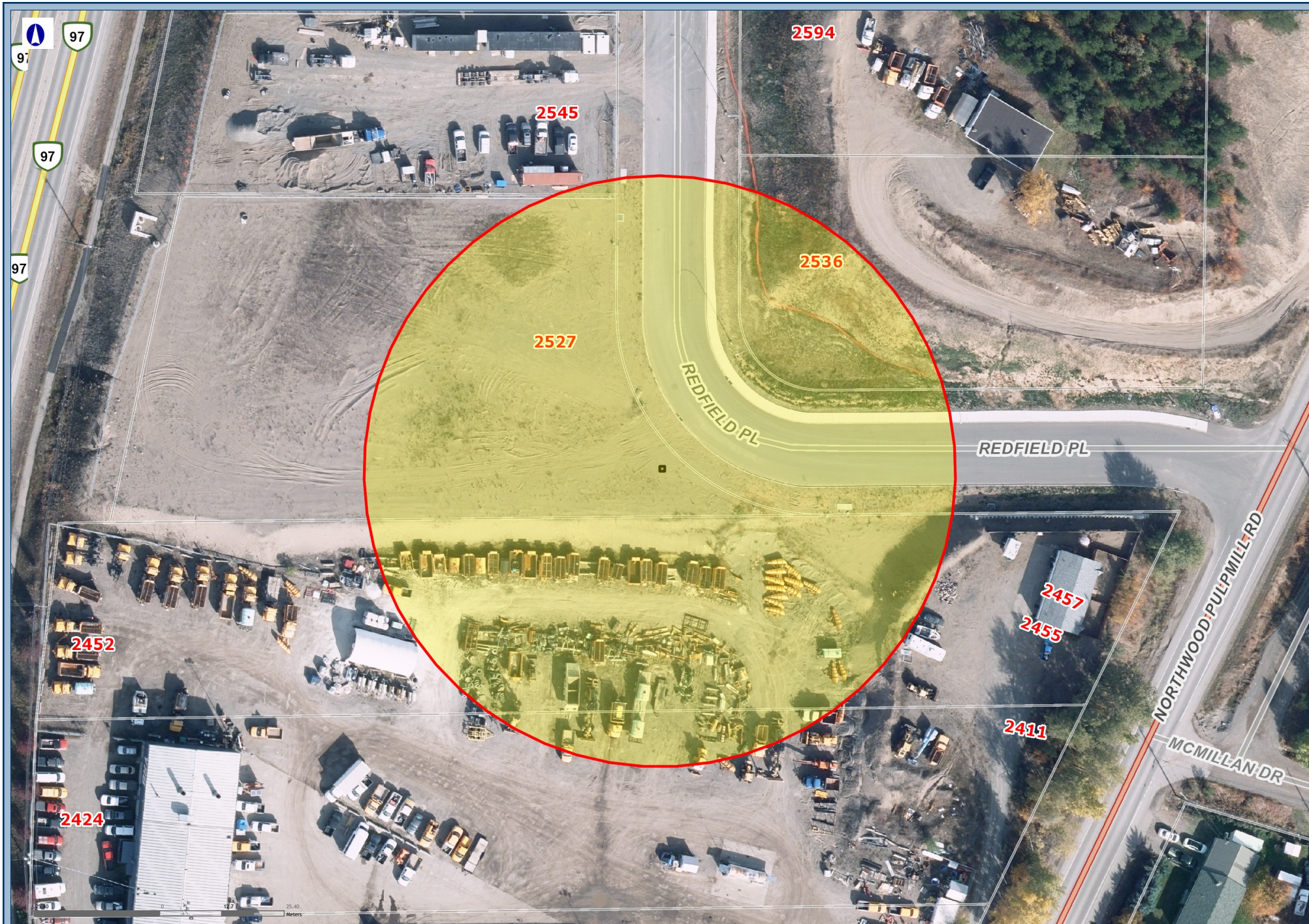
TELUS
4535 CANADA WAY
BURNBAY, BC V5G 1J9
ATTN: CHERYL BILYK

OCCUPANT
2455/2457 NORTHWOOD PULPMILL RD
PRINCE GEORGE BC V2K 1K3

OCCUPANT
2386/2424 HART HWY
PRINCE GEORGE BC V2K 2X8

CITY OF PRINCE GEORGE
KALI HOLAHAN, PLANNER
1100 PATRICIA BLVD
PRINCE GEORGE, BC, V2L 3V9

BC104270-3
Total = 12



1: 1000

This map is a user generated static output from an Internet mapping site and is for reference only. Data layers that appear on this map may or may not be accurate, current, or otherwise reliable.

Consultation Area

PGMAP

Appendix C: Envelope



c/o Cypress Land Services Inc.
Suite 1051 – 409 Granville Street
Vancouver, BC V6C 1T2

**IMPORTANT INFORMATION ENCLOSED REGARDING A PROPOSED TELECOMMUNICATIONS FACILITY WITHIN
APPROX. 60 METRES OF A PROPERTY YOU HAVE AN INTEREST IN**

Appendix 3: Revised Drawings



NEW SMALL MACRO SITE

Project Information

Client: TELUS MOBILITY

Site: BC104270-3 'PRINCE GEORGE - NORTHWOOD PULPMILL/NORTHWOOD OFFRAMP'

Site Location: 2527 REDFIELD PLACE, PRINCE GEORGE, BC

Coordinates: LAT: 53.947131
LONG: -122.760358

Structure: WOOD POLE STRUCTURE

Job No: E3366.03

Date: 09APR2020

Revision: 1

Purpose: ISSUED FOR PRELIMINARY REVIEW



IMAGE SOURCE: GOOGLE MAPS

Sheet List Table	
Sheet Number	Sheet Title
General	
P00.0	TITLE PAGE
Architectural	
P01.0	SITE LAYOUT
P02.0	COMPOUND LAYOUT
P03.0	SITE ELEVATION
P04.0	PROPOSED EQUIPMENT LEVELS
-	LANDSCAPE PLAN ATTACHMENT

Abbreviations

AGL = ABOVE GROUND LEVEL	F/S = FAR SIDE	O/D = OUTER DIAMETER
ANT. = ANTENNA	HDG = HOT DIP GALVANIZED	OPP. = OPPOSITE
AZ. = AZIMUTH	HT. = HEIGHT	QTY = QUANTITY
BCD = BOLT CIRCLE DIAMETER	MECH. = MECHANICAL	SIM. = SIMILAR
C/L = CENTRE LINE	M/W = MICROWAVE	S.S. = STAINLESS STEEL
EQ. = EQUAL or EQUIVALENT	N/S = NEAR SIDE	TYP. = TYPICAL
EX. = EXISTING	O/C = ON CENTRE	UNO = UNLESS NOTED OTHERWISE

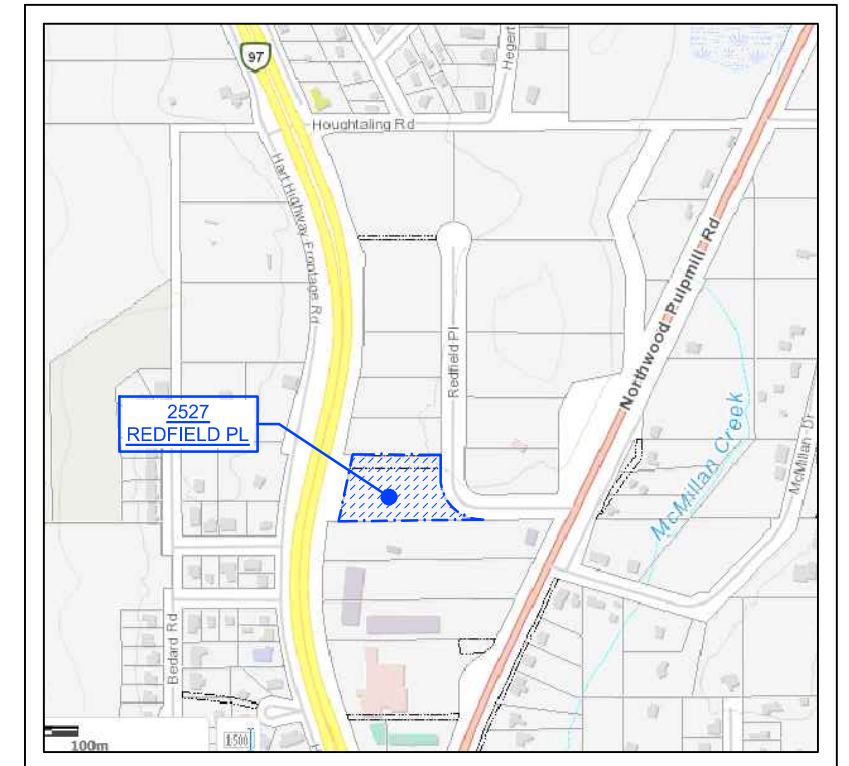
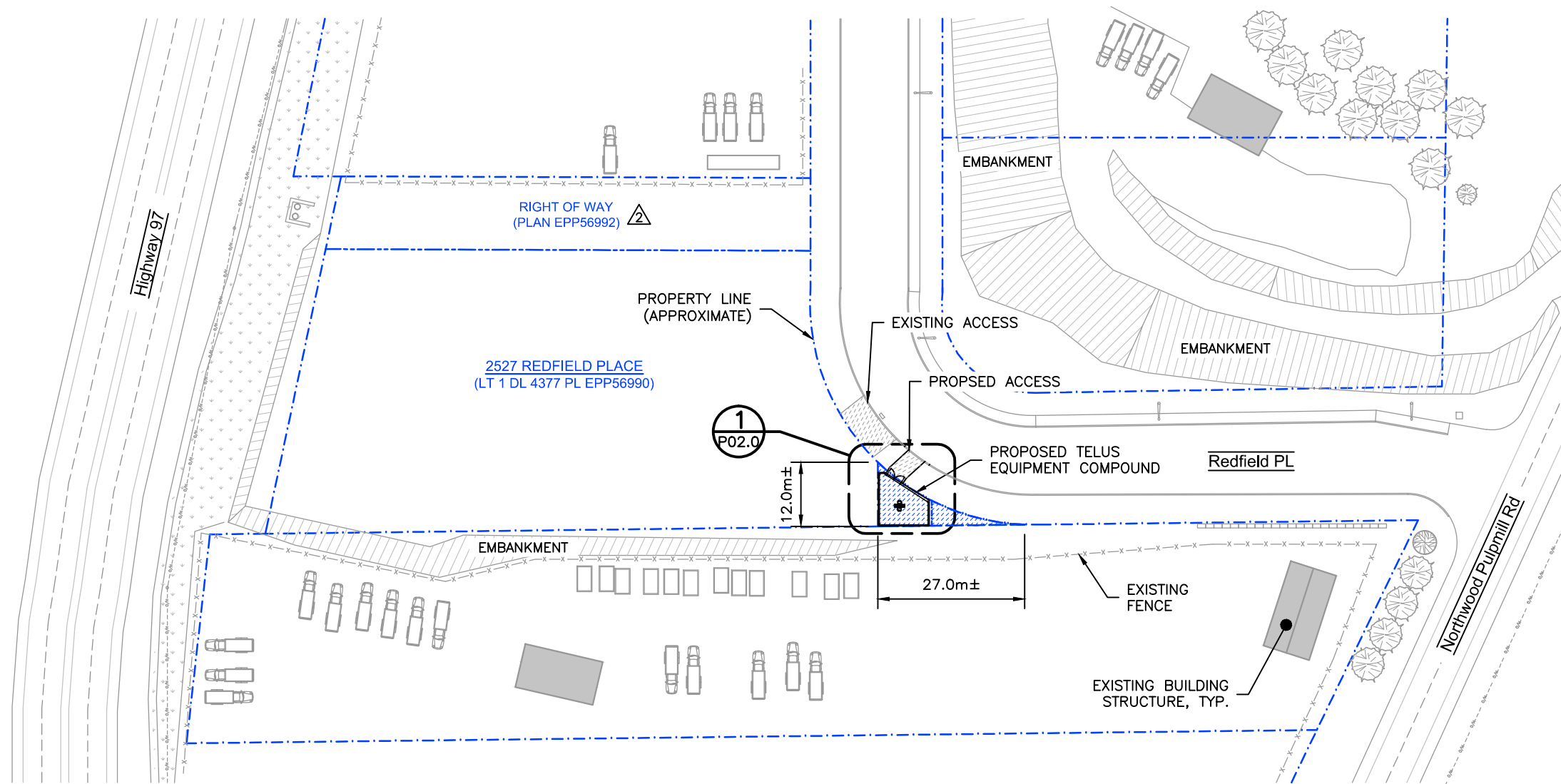


25-1610 Derwent Way
Delta, BC, V3M 6W1
Phone: (778) 919-3441
Fax: (888) 310-1669
info@alsettech.com

COPYRIGHT NOTICE:
THIS DOCUMENT IS PROTECTED BY COPYRIGHT LAW AND MAY NOT BE COPIED, DUPLICATED, OR REPRODUCED IN ANY MANNER, OR FOR ANY PURPOSE, EXCEPT WITH THE PRIOR WRITTEN PERMISSION OF THE COPYRIGHT HOLDER, ALSET TECHNICAL CONSULTANTS.



TRUE NORTH
APPROX.



SOURCE: CITY OF PRINCE GEORGE GIS 'PG MAP'

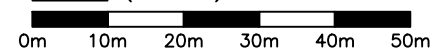
1 KEY MAP

NOTES:



1. SITE LAYOUT IS BASED ON INFORMATION PROVIDED BY OTHERS. NO LEGAL SURVEY HAS BEEN COMPLETED. RESULTS ARE PRELIMINARY ONLY.
2. HYDRO SERVICE & FIBER CONNECTION ARE NOT SHOWN. TO BE DETERMINED DURING DETAILED DESIGN.

2 SITE PLAN
- PLAN VIEW

SCALE (APPROX.)



REV	DATE	DESCRIPTION
3	21APR2020	ISSUED FOR PRELIMINARY REVIEW
2	17APR2020	ISSUED FOR PRELIMINARY REVIEW
1	09APR2020	ISSUED FOR PRELIMINARY REVIEW
0.1	28NOV2019	ISSUED FOR PRELIMINARY REVIEW



25-1610 Derwent Way
Delta, BC, V3M 6W1
Phone: (778) 919-3441
Fax: (888) 310-1669
info@alsettech.com

CLIENT: TELUS MOBILITY

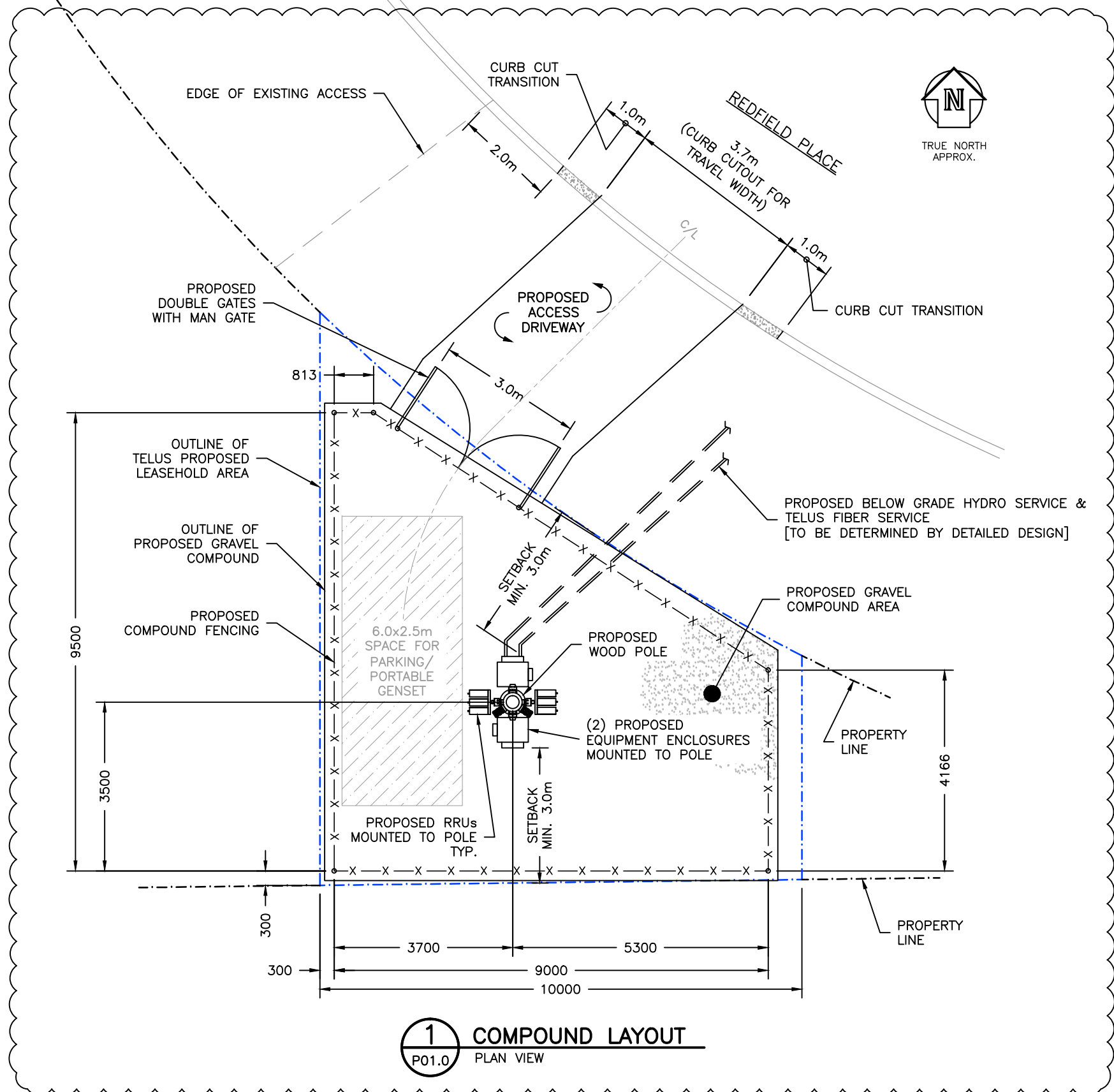
SITE: BC104270-3 'PRINCE GEORGE - NORTHWOOD PULPMILL/NORTHWOOD OFFRAMP'

PROJECT: NEW SMALL MACRO SITE

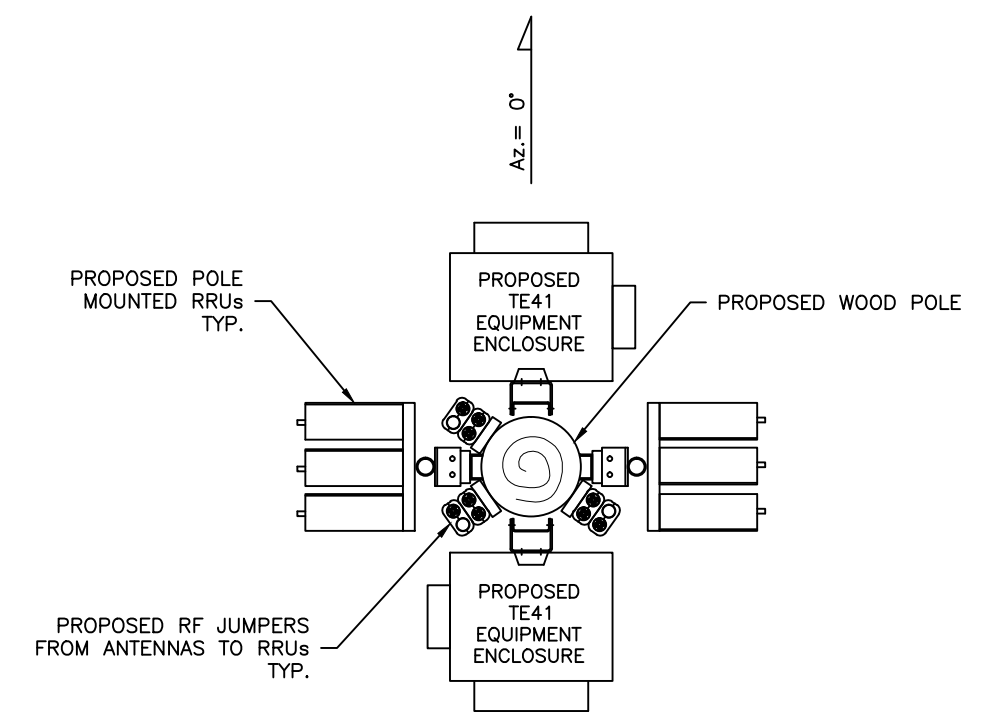
JOB No: E3366.03 LOCATION: 2527 REDFIELD PLACE, PRINCE GEORGE, BC

DRWG TITLE: SITE LAYOUT

DRWG: P01.0



1 COMPOUND LAYOUT
P01.0 PLAN VIEW



2 POLE SECTION
- PLAN VIEW

EQUIPMENT COMPOUND AREA = 78.88m²
MONOPOLE & ANCILLARY EQUIPMENT AREA = 3.50m²

REV	DATE	DESCRIPTION
3	21APR2020	ISSUED FOR PRELIMINARY REVIEW
2	17APR2020	ISSUED FOR PRELIMINARY REVIEW
1	09APR2020	ISSUED FOR PRELIMINARY REVIEW
0.1	28NOV2019	ISSUED FOR PRELIMINARY REVIEW

25-1610 Derwent Way
Delta, BC, V3M 6W1
Phone: (778) 919-3441
Fax: (888) 310-1669
info@alsettech.com

CLIENT: TELUS MOBILITY	
SITE: BC104270-3 'PRINCE GEORGE - NORTHWOOD PULPMILL/NORTHWOOD OFFRAMP'	
PROJECT: NEW SMALL MACRO SITE	
JOB No: E3366.03	LOCATION: 2527 REDFIELD PLACE, PRINCE GEORGE, BC
DRWG TITLE: COMPOUND LAYOUT	DRWG: P02.0

POLE NOTES:

POLE IS SHOWN FOR CONCEPTUAL DESIGN PURPOSES ONLY. POLE CLASS & SETTING DEPTH TO BE BASED ON FINAL DESIGN & ANTENNA LOADING SPECIFIED BY CLIENT.

TOWER & ASSOCIATED COMPONENTS TO BE DESIGNED IN ACCORDANCE WITH LATEST EDITION OF TELUS CONSTRUCTION SPECIFICATIONS.

DESIGN OF POLE & ALL ASSOCIATED COMPONENTS TO CONFORM TO THE LATEST EDITION OF APPLICABLE CODES & STANDARDS.

MARKING & LIGHTING TO BE IN ACCORDANCE WITH TRANSPORT CANADA REQUIREMENTS.

ANTENNA LOADING CHART

HEIGHT		ANTENNA			TX-LINE		STATUS	OWNER
(ft)	(m)	QTY	DESCRIPTION	AZIMUTH	QTY	TYPE		
59.1	18.0	3	ASI4516R0v06	90/180/340	36	RF JUMPERS	PROPOSED	TELUS
13.1	4.0	6	RRUs	--	--	DC/FIBER JUMPERS	PROPOSED	TELUS
9.8	3.0	6	RRUs	--	--	DC/FIBER JUMPERS	PROPOSED	TELUS
9.8	3.0	2	TE41 EQUIPMENT ENCLOSURE	--	--	--	PROPOSED	TELUS

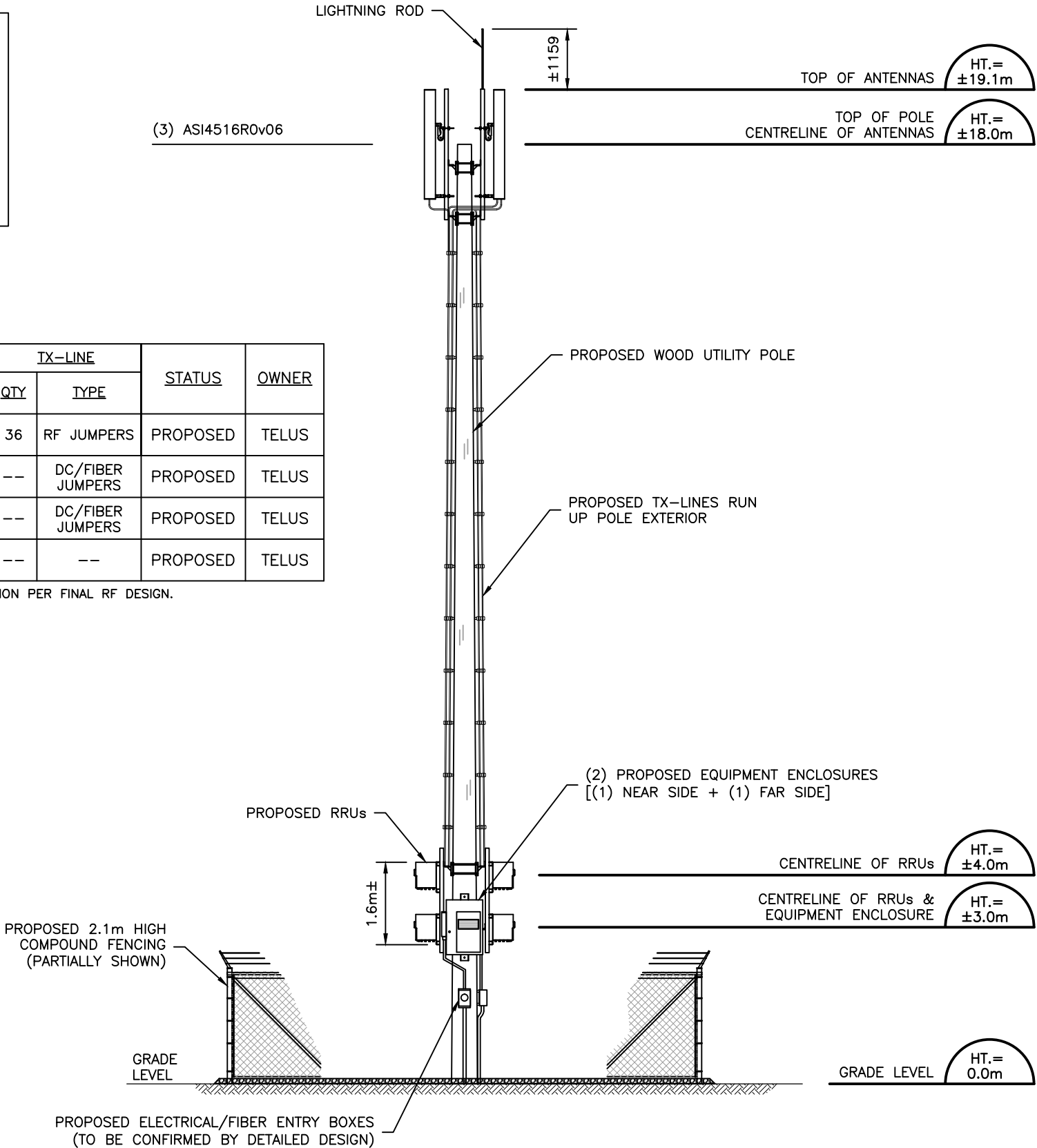
NOTE: SPECIFIED LOADING IS PRELIMINARY ONLY AND IS SUBJECT TO REVISION PER FINAL RF DESIGN.

EQUIPMENT PROPERTIES



EQUIPMENT ENCLOSURE
MODEL: TE-41
DIMENSIONS: 1.04x0.76x0.58m (HxWxD)
WEIGHT: 680 kg (Approx.)

ANTENNA
MODEL: ASI4516R0v06
DIMENSIONS: 2.10x0.50x0.21m (LxWxD)
WEIGHT: 43.0 kg

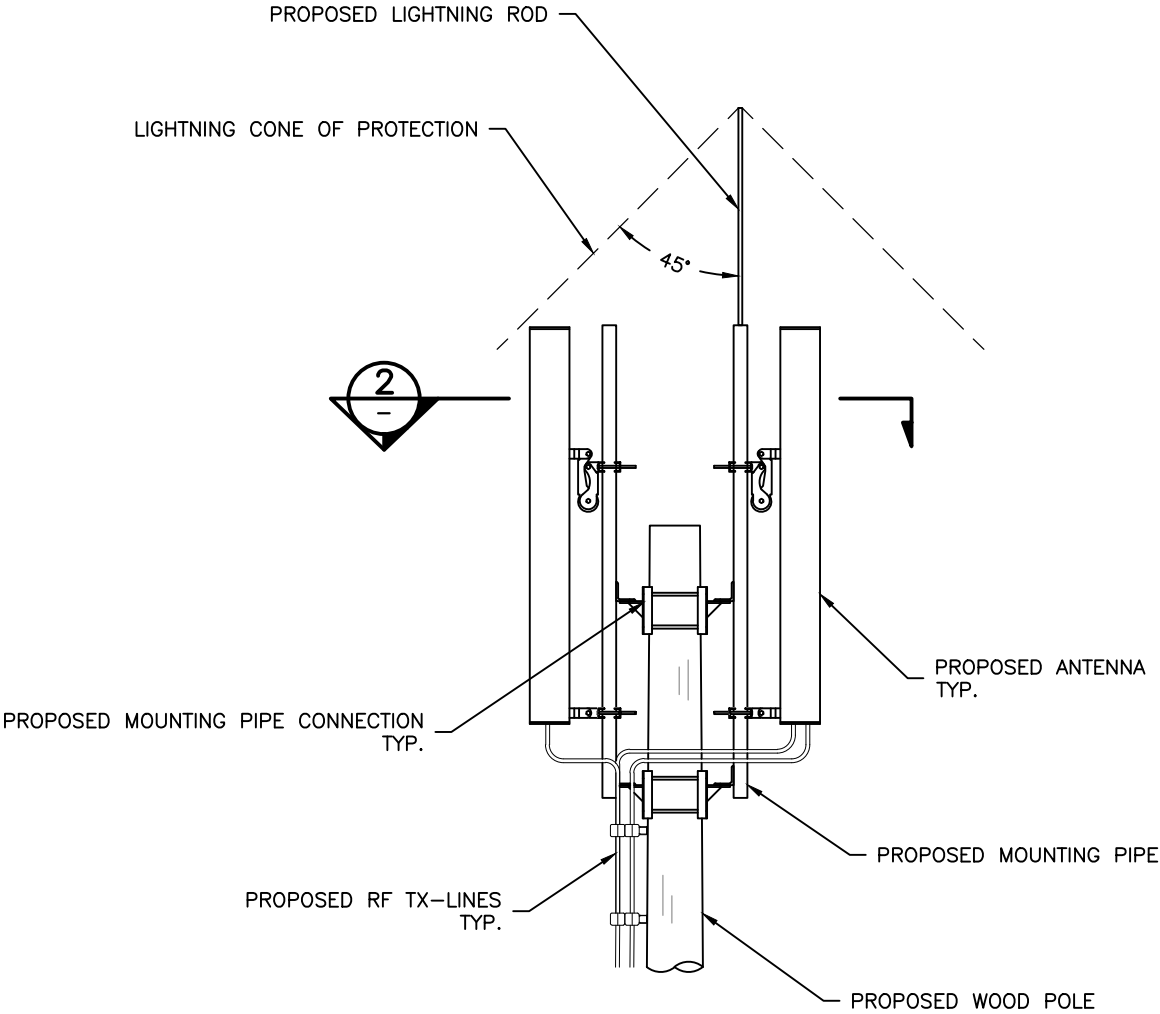
RRU
MODEL: TBD
DIMENSIONS: 0.49x0.39x0.15m (LxWxD)
WEIGHT: 26 kg



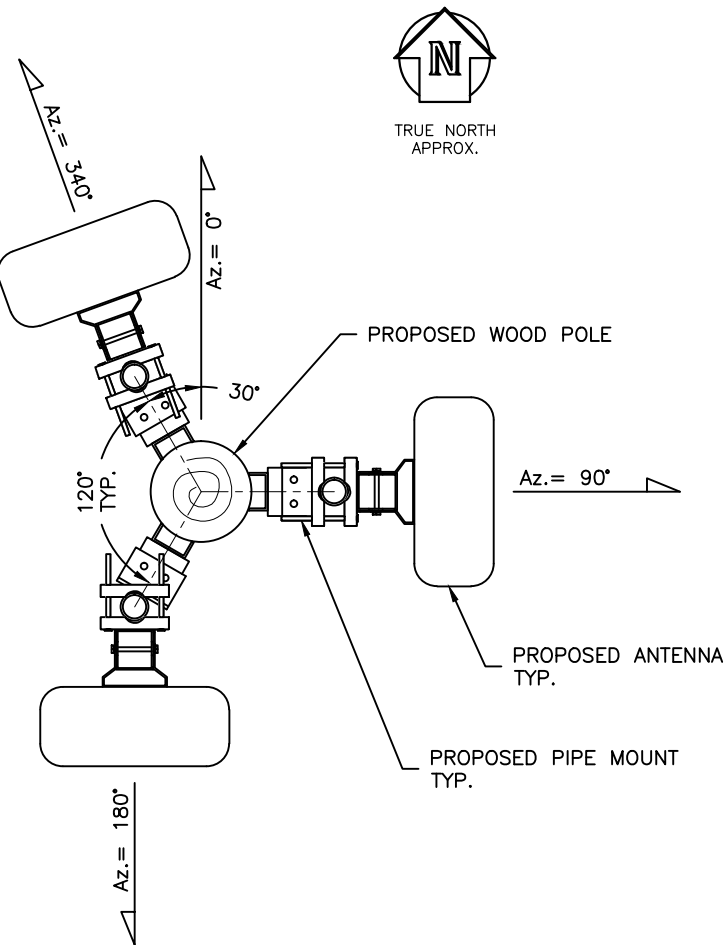
1 SITE ELEVATION
- ELEVATION VIEW

1	09APR2020	ISSUED FOR PRELIMINARY REVIEW
0.1	28NOV2019	ISSUED FOR PRELIMINARY REVIEW
REV	DATE	DESCRIPTION
		
		
CLIENT: TELUS MOBILITY		
SITE: BC104270-3 'PRINCE GEORGE - NORTHWOOD PULPMILL/NORTHWOOD OFFRAMP'		
PROJECT: NEW SMALL MACRO SITE		
JOB No: E3366.03	LOCATION: 2527 REDFIELD PLACE, PRINCE GEORGE, BC	
DRWG TITLE: SITE ELEVATION	DRWG: P03.0	

NOTE:
EQUIPMENT MOUNTING SHOWN IS PRELIMINARY AND SUBJECT TO REVISION ACCORDING TO THE DETAILED DESIGN.

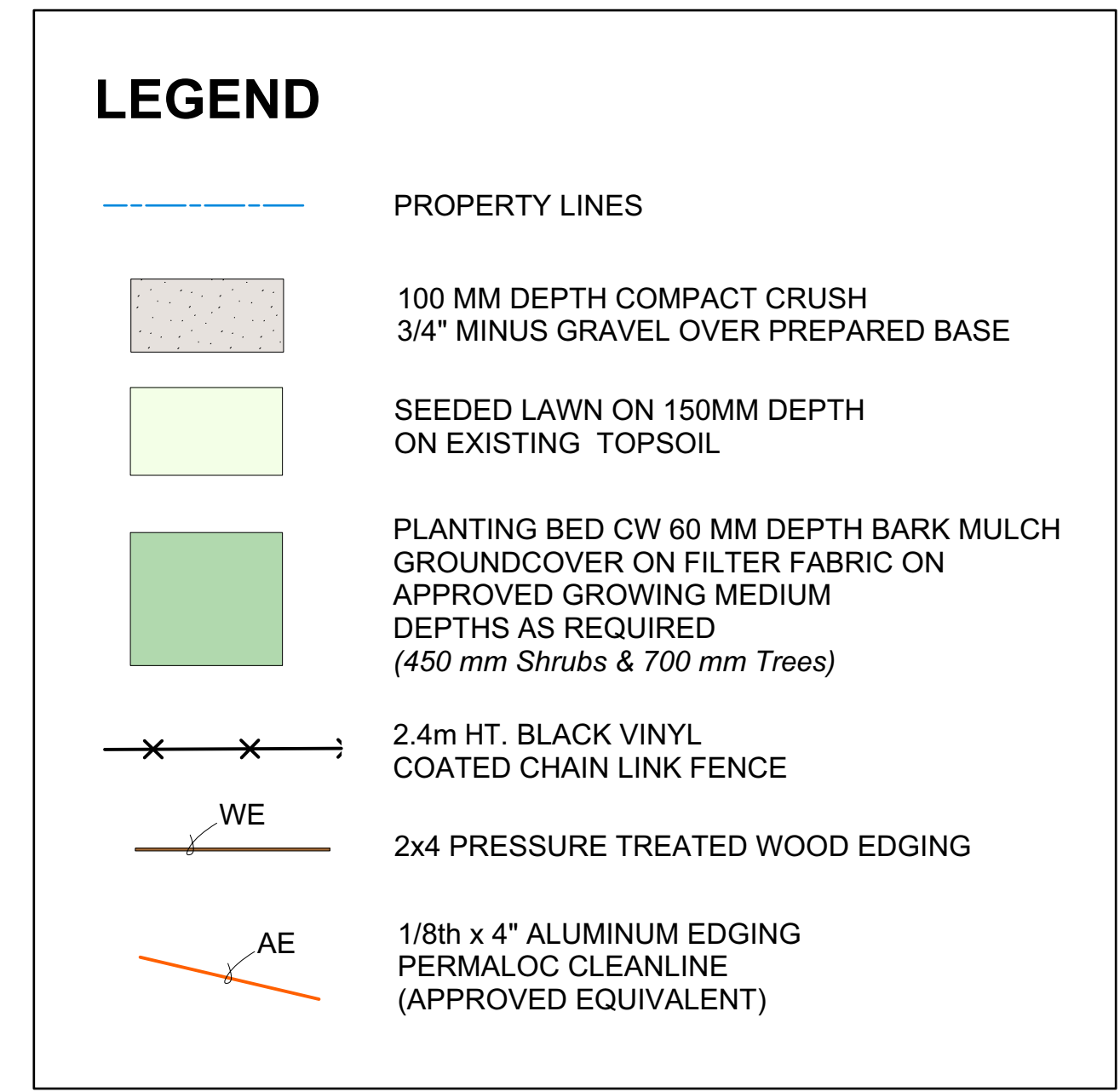


1 ANTENNA MOUNTING DETAIL
ELEVATION VIEW

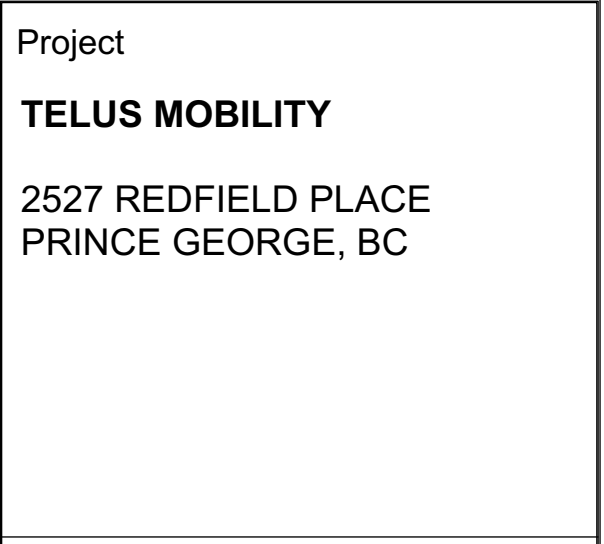


2 ANTENNA LAYOUT
PLAN VIEW

			<div>25-1610 Derwent Way Delta, BC, V3M 6W1 Phone: (778) 919-3441 Fax: (888) 310-1669 info@alsettech.com</div>	
			CLIENT: TELUS MOBILITY	
			SITE: BC104270-3 'PRINCE GEORGE - NORTHWOOD PULPMILL/NORTHWOOD OFFRAMP'	
			PROJECT: NEW SMALL MACRO SITE	
			JOB No: E3366.03	LOCATION: 2527 REDFIELD PLACE, PRINCE GEORGE, BC
1	09APR2020	ISSUED FOR PRELIMINARY REVIEW	DRWG TITLE: PROPOSED EQUIPMENT LEVELS	
0.1	28NOV2019	ISSUED FOR PRELIMINARY REVIEW		
REV	DATE	DESCRIPTION		
				DRWG: P04.0



Date	Revisions	By
4/8/2020	Issued For Review	SD



Sheet Title

Landscape Plan

Date April 8, 2020

Scale 1:50 METERS

Drawn By SD

Project No.	
-------------	--

Copyright reserved. This drawing and the design are, and at all times remain the exclusive property of Lazzarin Svidahl Landscape Architects and cannot be used without the Landscape Architect's written consent.

Drawing No.

L 1

ANDORRA JUNIPER

NOTE: ALL WORK AND MATERIALS
SHALL BE TO BCSLA / CNLA STANDARDS

Appendix 4: Sample Resolution

Resolution

WHEREAS TELUS proposes to erect a wireless communications facility at the location of **2527 Redfield Place, Prince George, BC** at the Coordinates: 53.947131 N, --122.760358 W;

AND WHEREAS proponents of telecommunication towers are regulated by Innovation, Science and Economic Development Canada (ISED), formerly Industry Canada on behalf of the Government of Canada and as part of their approval, ISED requires proponents to consult with land use authorities as provided for in CPC-2-0-03;

AND WHEREAS TELUS has consulted with the City of Prince George following the CPC-2-0-03 and the City of Prince George planning staff have no objection to the proposed telecommunications tower;

AND WHEREAS TELUS has consulted with the public by notifying properties within three times the tower height, and has provided a 30-day period for written public comment;

AND WHEREAS there are no significant land use issues identified by the consultation;

NOW THEREFORE BE IT RESOLVED THAT:

1. The Clerk be instructed to advise TELUS that:
 - a) TELUS has satisfactorily completed its consultation with the City of Prince George;
 - b) The City of Prince George is satisfied with TELUS's public consultation process and does not require any further consultation with the public; and
 - c) The City of Prince George concurs with TELUS's proposal to construct a wireless telecommunications facility provided it is constructed substantially in accordance with the plans, submitted to the City of Prince George.