

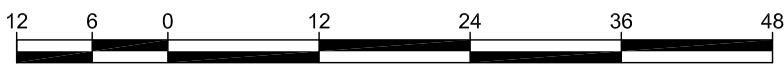
# REFERENCE PLAN OF CONSOLIDATION OF CLOSED ROAD, PLAN EPP101302, AND LOT 1, PLAN 17026, ALL IN DISTRICT LOT 343, CARIBOO DISTRICT.

PLAN EPP101303

PURSUANT TO SECTION 100(1)(b) OF THE LAND TITLE ACT.

THIS PLAN LIES WITHIN INTEGRATED SURVEY AREA  
No. 39 PRINCE GEORGE, BC, NAD83 (CSRS) 4.0.0.BC.1

BCGS 93G.097



THE INTENDED PLOT SIZE OF THIS PLAN IS 432mm IN WIDTH BY 560mm IN HEIGHT (C SIZE) WHEN PLOTTED AT A SCALE OF 1:600.

ALL DISTANCES ARE IN METRES AND DECIMALS THEREOF.

GRID BEARINGS ARE DERIVED FROM OBSERVATIONS BETWEEN  
GEODETIC CONTROL MONUMENTS 85H1077 AND 85H1216.

THE UTM COORDINATES AND ESTIMATED ABSOLUTE ACCURACY  
ACHIEVED HAVE BEEN DERIVED FROM MASCOT PUBLISHED  
COORDINATES AND STANDARD DEVIATIONS FOR GEODETIC CONTROL  
MONUMENTS 85H1077 AND 85H1216.

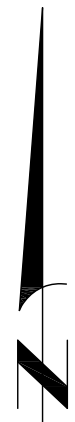
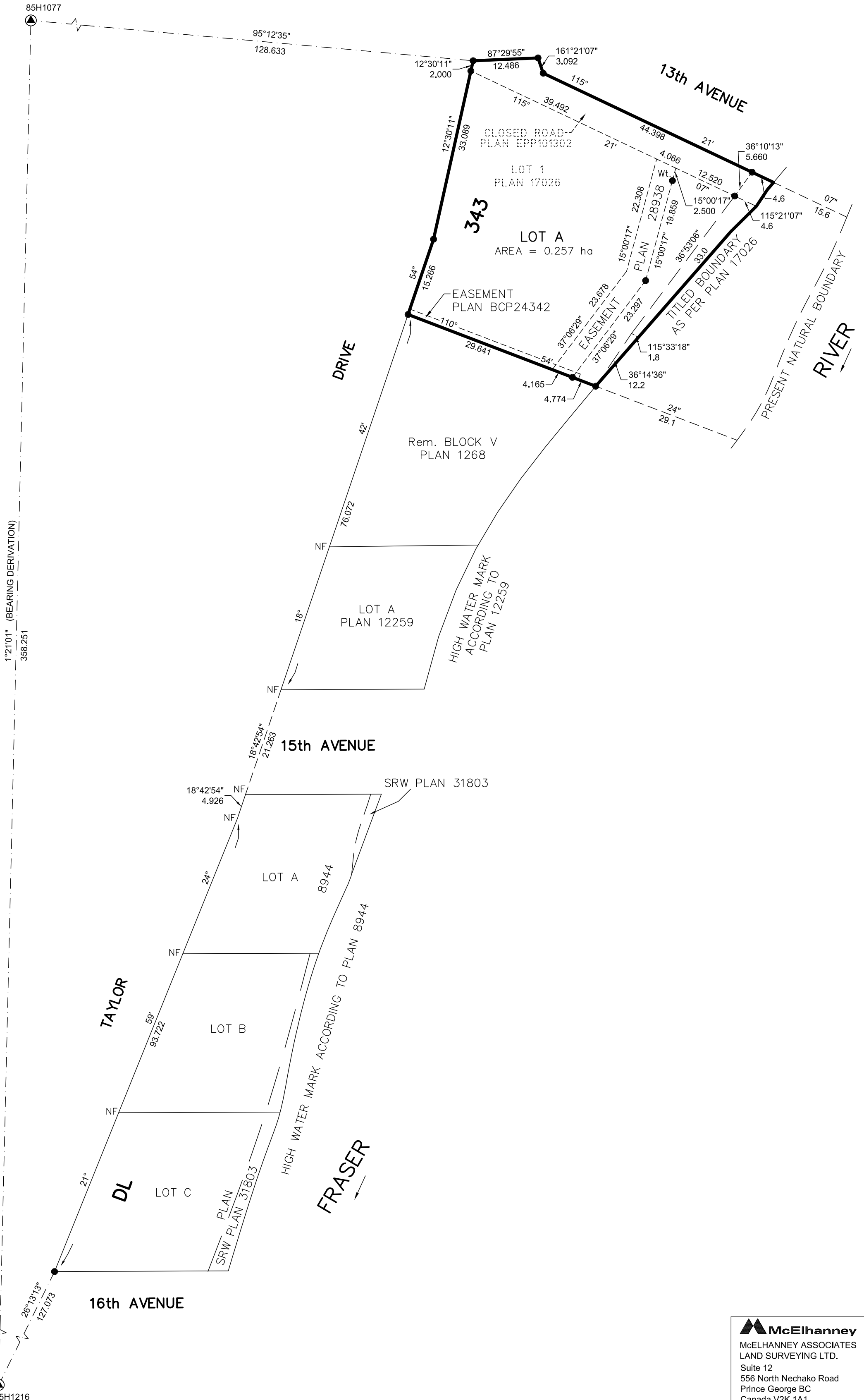
THIS PLAN SHOWS HORIZONTAL GROUND-LEVEL DISTANCES UNLESS  
OTHERWISE SPECIFIED. TO COMPUTE GRID DISTANCES, MULTIPLY  
GROUND-LEVEL DISTANCES BY THE AVERAGE COMBINED FACTOR OF  
0.9995159 WHICH HAS BEEN DERIVED FROM CONTROL MONUMENTS  
85H1077 AND 85H1216.

NOTE:  
THIS PLAN SHOWS ONE OR MORE WITNESS POSTS  
WHICH ARE NOT SET ON THE TRUE CORNER(S).

## LEGEND

SYMBOLS		DESCRIPTION
FOUND	PLACED	
		CONTROL MONUMENT
		STANDARD IRON POST
EAA		ESTIMATED ABSOLUTE ACCURACY
Wt.		WITNESS

GEOREFERENCING POSITIONS UTM COORDINATES, ZONE 10, NAD 83 (CSRS), 4.0.0.BC.1			
STATION	NORTHING	EASTING	EAA
85H1077	5973738.90	517774.61	0.10
85H1216	5973380.92	517766.17	0.10



THE FIELD SURVEY REPRESENTED BY THIS PLAN WAS COMPLETED  
ON THE 17th DAY OF MARCH, 2020  
THOMAS DUNKLEY, BCLS 1002

THIS PLAN LIES WITHIN THE REGIONAL DISTRICT OF FRASER-FORT GEORGE.

**McElhanney**  
McELHANNEY ASSOCIATES  
LAND SURVEYING LTD.  
Suite 12  
556 North Nechako Road  
Prince George BC  
Canada V2K 1A1  
Tel 250 561 2229

File No. 2341-6741-CON