

**CITY OF PRINCE GEORGE**  
**BYLAW NO. 9061, 2019**

**A Bylaw of the City of Prince George to permanently close a portion of lane located adjacent to 1445 Dogwood Street to remove its highway dedication for the purpose of future disposal of the lands.**

**WHEREAS** the Council of the City of Prince George deems it desirable that an approximate 102.2m<sup>2</sup> of lane dedicated on Plan 1268, within Block 227, District Lot 343, Cariboo District as shown on Reference Plan EPP97638 be closed to traffic, and that the highway dedication thereof be removed;

**AND WHEREAS**, in accordance with section 40 of the *Community Charter*, notice of intention to adopt this bylaw has been delivered, posted and published, and an opportunity has been provided for persons who consider they are affected by this bylaw to make representations to Council;

**NOW THEREFORE** the Council of the City of Prince George, in open meeting assembled, **ENACTS AS FOLLOWS:**

1. That the portion of lane dedicated on Plan 1268, within the block legally described as Block 227, District Lot 343, Cariboo District, as shown outlined in bold black on the proposed Reference Plan EPP97638, attached hereto as Appendix "A" and forming part of this Bylaw, is closed to traffic.
2. That the portion of lane dedicated on Plan 1268, within the block legally described as Block, 227, District Lot 343, Cariboo District, as shown outlined in bold black on the proposed Reference Plan EPP97638, attached hereto as Appendix "A" and forming part of this Bylaw, is removed.
3. The Mayor and Corporate Officer are hereby empowered to do all things necessary to give effect to this Bylaw.
4. This Bylaw shall come into full force and take effect upon its adoption and shall be filed with the Registrar of the applicable Land Title Office.
5. This Bylaw may be cited for all purposes as "City of Prince George 1445 Dogwood Street Road Closure Bylaw No. 9061, 2019".

READ A FIRST TIME THIS                      20<sup>TH</sup>                      DAY OF                      JANUARY                      , 2020.

READ A SECOND TIME THIS                      20<sup>TH</sup>                      DAY OF                      JANUARY                      , 2020.

First two readings passed by a **UNANIMOUS** decision of Members of City Council present and eligible to vote.

READ A THIRD TIME THIS 24<sup>TH</sup> DAY OF FEBRUARY, 2020.

Third reading passed by a **UNANIMOUS** decision of Members of City Council present and eligible to vote.

Certified correct as passed third reading this 25<sup>TH</sup> day of FEBRUARY, 2020.

  
\_\_\_\_\_  
CORPORATE OFFICER OF  
THE CITY OF PRINCE GEORGE

APPROVED BY THE MINISTER OF TRANSPORTATION AND INFRASTRUCTURE PURSUANT TO THE PROVISIONS OF SECTION 41(3) OF THE COMMUNITY CHARTER.

THIS 17<sup>TH</sup> DAY OF MARCH, 2020.

  
\_\_\_\_\_  
for MINISTER OF TRANSPORTATION  
AND INFRASTRUCTURE

ADOPTED THIS DAY OF, 2020,  
BY A DECISION OF ALL MEMBERS OF CITY COUNCIL PRESENT AND  
ELIGIBLE TO VOTE.

\_\_\_\_\_  
MAYOR

\_\_\_\_\_  
CORPORATE OFFICER

**Reference Plan to accompany Bylaw No. 9061 (Prince George) closing part of Lane within Block 227, shown dedicated on Plan 1268, District Lot 343, Cariboo District.**

PURSUANT TO SECTION 120 OF THE LAND TITLE ACT AND SECTION 40 OF THE COMMUNITY CHARTER.

Integrated survey area No. 39 Prince George, BC,  
NADES (CORS) 4.0.0.BC.1

BOGS 829.087

The intended use of this plan is shown in which by reference to the plan when printed at a scale of 1:100.

All distances are in metres and decimals thereof.

Only bearings are derived from observations between ground control monuments 801108 and 801107.

This UTM coordinate and estimated absolute accuracy obtained from lower derived from known published coordinates and standard deviations for ground control monuments 801108 and 801107.

This plan shows horizontal ground-level distances unless otherwise specified. To convert ground distances to vertical ground-level distances by the average combined factor of 0.9999189 which has been derived from control monument 801108.

Note: This plan shows one or more witness points which are not on the true corner.

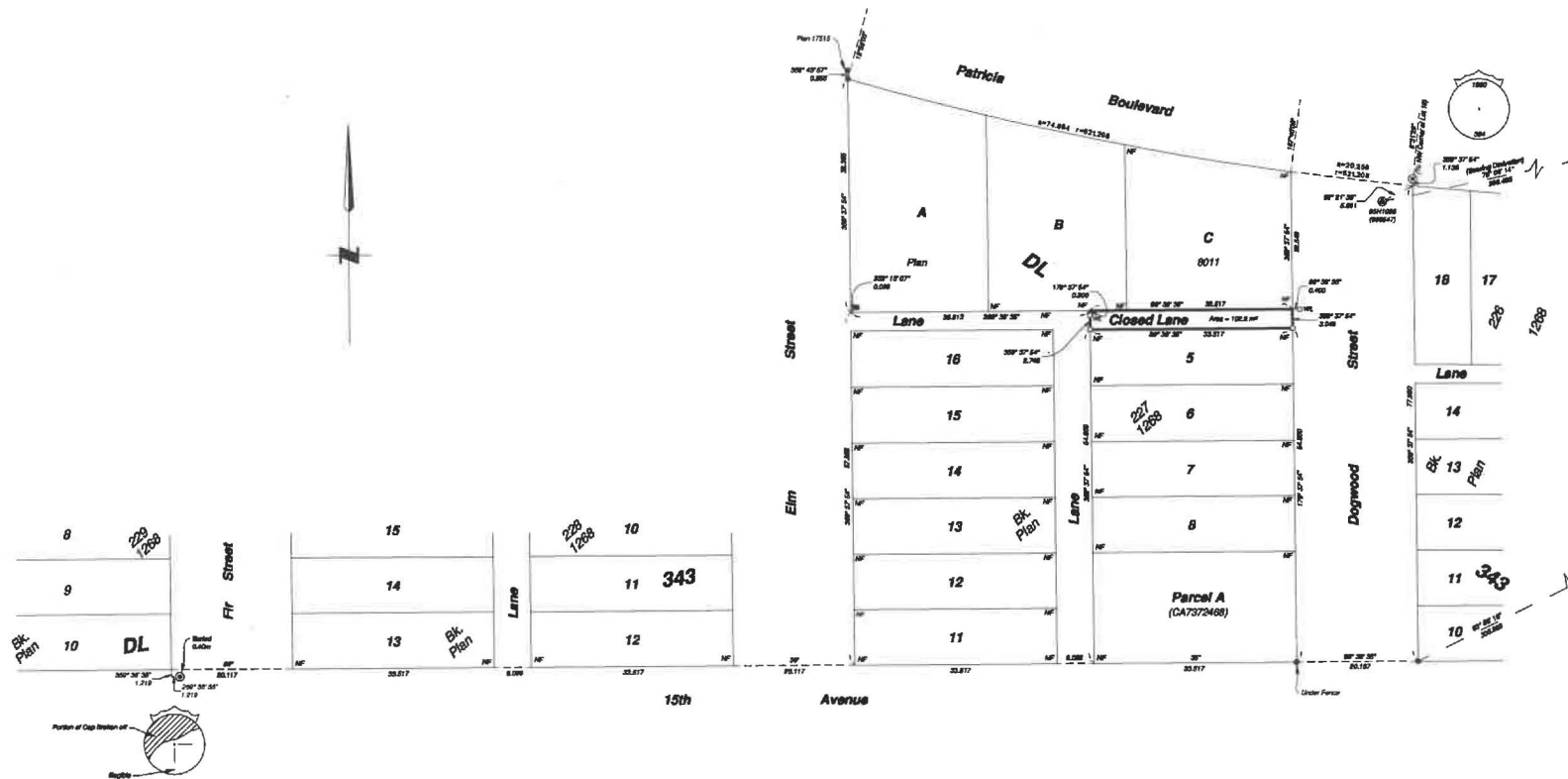
Some points are suggested for clarity.

Ground control monuments are shown as follows:

#### Legend

Symbol	Description
Found	Planned
Control Monument	
Standard Iron Pin	
Standard Concrete Post	
CSP	Combined Scale Factor
EAA	Estimated Absolute Accuracy
BL	Block

Georeferencing Positions				
UTM Coordinates, Zone 18, NAD 83 (CORS), 4.0.0.BC.1				
Station	Northing	Easting	EAA	CSP
801108	8872876.87	817466.41	0.18	0.9999189
801107	8873738.93	817774.81	0.18	0.9999187



The field survey represented by this plan was completed on the 23rd day of October, 2018.

Robert Koster, BCLS 874

This plan lies within the Regional District of Fraser-Fort George

Plan 19323-PC

FORBES LAND SURVEYING INC.  
1888 Lane Street South  
Prince George, BC V2N 1T3  
Tel: (250) 614-8728