

**CITY OF PRINCE GEORGE**  
**BYLAW NO. 9569, 2025**

A Bylaw of the City of Prince George to rezone certain lands and to amend “City of Prince George Zoning Bylaw No. 7850, 2007”.

**WHEREAS** pursuant to the provisions of Section 479 of *the Local Government Act*, in relation to zoning, the Council of the City of Prince George is empowered to make regulations thereto;

**AND WHEREAS** “City of Prince George Zoning Bylaw No. 7850, 2007” has been adopted to make regulations thereto;

**AND WHEREAS** the Council of the City of Prince George has deemed it desirable that the subject property be rezoned from “RS1m: Suburban Residential” to “RM1: Multiple Residential”, to facilitate a multiple residential development, or other uses, pursuant to the “RM1: Multiple Residential” zoning designation;

**APPLICANT:** L&M Engineering Ltd. on behalf of Kidd Real Estate Holdings Ltd.,  
Inc. No. BC0821509

**SUBJECT PROPERTY:** 4922 Chief Lake Road

**NOW THEREFORE** the Council of the City of Prince George, in open meeting assembled, **ENACTS AS FOLLOWS:**

1. That “City of Prince George Zoning Bylaw No. 7850, 2007”, be amended as follows:
  - a. That Lot 2, District Lot 2424, Cariboo District, Plan 33278, be rezoned from “RS1m: Suburban Residential” to “RM1: Multiple Residential” as shown on Appendix “A”, attached to and forming part of this Bylaw.
2. That the Zoning Map referred to as Schedule "A" of the “City of Prince George Zoning Bylaw No. 7850, 2007”, shall be amended accordingly.
3. That the Mayor and Corporate Officer are hereby empowered to do all things necessary to give effect to this Bylaw.
4. That this Bylaw may be cited for all purposes as "City of Prince George Zoning Bylaw No. 7850, 2007, Amendment Bylaw No. 9569, 2025".

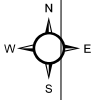
READ A FIRST TIME THIS DAY OF , 2025.

READ A SECOND TIME THIS DAY OF , 2025.

READ A THIRD TIME THIS DAY OF , 2025.

First three readings passed by a decision of Members of City Council present  
and eligible to vote.





B A 6 5 4

4

3

2

1

2

Rezone from RS1m: Suburban Residential  
to RM1: Multiple Residential

20

19

18

17

16

15

A

3

14

13

12

Chief Lake Rd

11

10

9

Subject Parcel

Parcel

0 10 20 30 Meters

Coordinate System: NAD 1983 UTM Zone 10N  
Projection: Transverse Mercator  
Datum: North American 1983

### Appendix "A" to Bylaw No. 9569

Lot 2, DL 2424, CD, Plan 33278



1:1,750