

Vary Section 9.5.6 2. of the City of Prince George Zoning Bylaw No. 7850, 2007 as follows:
Increase the maximum height of accessory development from 7.0 m to 7.4 m.

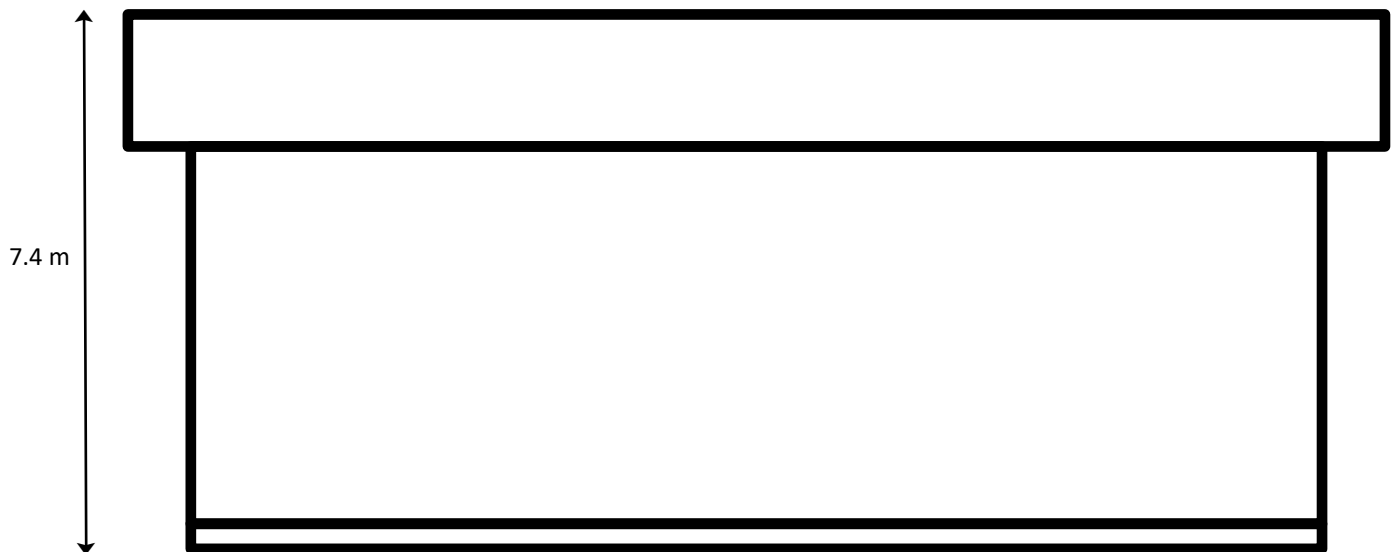
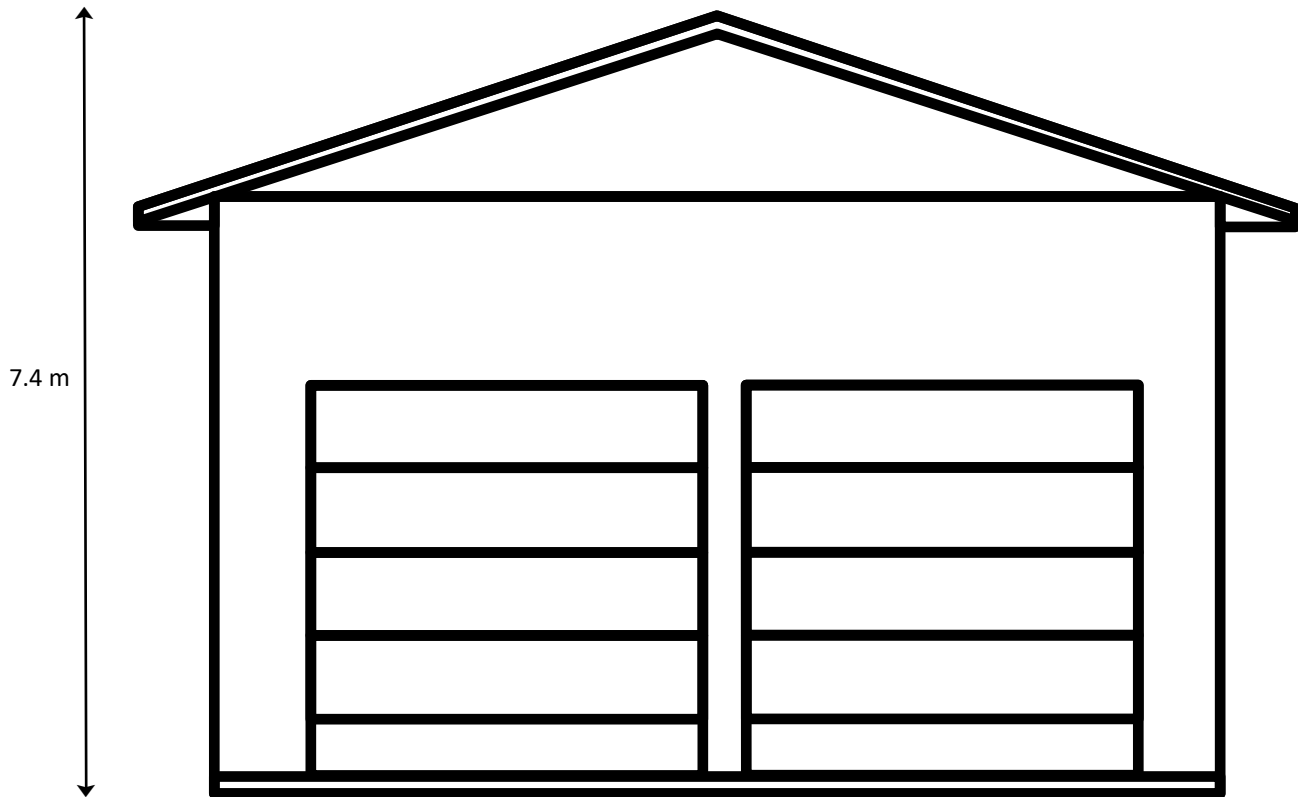


Exhibit "B" to VP100697

Lot 14, DL 2424, CD, Plan 9563 Except Parcel A (Plan 21061)

