

**CITY OF PRINCE GEORGE**  
**BYLAW NO. 9047, 2019**

**A Bylaw of the City of Prince George to permanently close portions of road located near 4759 Continental Way to remove its highway dedication for the purpose of future disposal of the lands.**

**WHEREAS** the Council of the City of Prince George deems it desirable that an approximate 0.228 hectares of road dedicated on Plans PGP35583, PGP39051 and PGP39049, District Lot 745, Cariboo District, as shown on Reference Plan EPP95509, be closed to traffic, and that the highway dedication thereof be removed;

**AND WHEREAS**, in accordance with section 40 of the *Community Charter*, notice of intention to adopt this bylaw has been delivered, posted and published, and an opportunity has been provided for persons who consider they are affected by this bylaw to make representations to Council;

**NOW THEREFORE** the Council of the City of Prince George, in open meeting assembled, **ENACTS AS FOLLOWS:**

1. That the portions of road shown dedicated on Plans PGP35583, PGP39051 and PGP39049, District Lot 745, Cariboo District, as shown outlined in bold black on Reference Plan EPP95509, attached hereto as Appendix "A" and forming part of this Bylaw, is closed to traffic.
2. That the dedication of the portions of road dedicated by Plans PGP35583, PGP39051 and PGP39049, District Lot 745, Cariboo District, as shown outlined in bold black Reference Plan EPP95509, attached hereto as Appendix "A" and forming part of this Bylaw, is removed.
3. The Mayor and Corporate Officer are hereby empowered to do all things necessary to give effect to this Bylaw.
4. This Bylaw shall come into full force and take effect upon its adoption and shall be filed with the Registrar of the applicable Land Title Office.
5. This Bylaw may be cited for all purposes as "City of Prince George 4759 Continental Way Road Closure Bylaw No. 9047, 2019".

READ A FIRST TIME THIS 23<sup>RD</sup> DAY OF OCTOBER, 2019.


READ A SECOND TIME THIS 23<sup>RD</sup> DAY OF OCTOBER, 2019.

First two readings passed by a UNANIMOUS decision of Members of City Council present and eligible to vote.

READ A THIRD TIME THIS 18<sup>TH</sup> DAY OF NOVEMBER, 2019.

Third reading passed by a UNANIMOUS decision of Members of City Council present and eligible to vote.

Certified correct as passed third reading this 19<sup>TH</sup> day of NOVEMBER, 2019.

  
CORPORATE OFFICER OF  
THE CITY OF PRINCE GEORGE

APPROVED BY THE MINISTER OF TRANSPORTATION AND INFRASTRUCTURE PURSUANT TO THE PROVISIONS OF SECTION 41(3) OF THE COMMUNITY CHARTER.

THIS 21 DAY OF JANUARY 2019. 2020

  
for MINISTER OF TRANSPORTATION  
AND INFRASTRUCTURE

ADOPTED THIS DAY OF, 2019, BY A  
DECISION OF ALL MEMBERS OF CITY COUNCIL PRESENT AND  
ELIGIBLE TO VOTE.

\_\_\_\_\_  
MAYOR

\_\_\_\_\_  
CORPORATE OFFICER

**Reference Plan to Accompany  
By-law No. 9047,  
(City of Prince George) to close  
portions of Road shown dedicated  
on Plans PGP35583, PGP39051,  
and PGP39049, District Lot 745,  
Cariboo District.**

Pursuant to Section 120 of the Land Title Act and Section 40 of the Community Charter.

Integrated survey area No. 39 Prince George, BC,  
NAD83 (CSRS) 4.0.0.BC.1

BCGS 93G.087



The intended plot size of this plan is 432mm in width by 558mm in height (C size) when plotted at a scale of 1:750.

All distances are in metres and decimals thereof.

Grid bearings are derived from observations between geodetic control monuments 939447(86H1740) and 294447(86H1735).

The UTM coordinates and estimated horizontal positional accuracy achieved have been derived from massed published coordinates and standard deviations for geodetic control monuments 939447(86H1740) and 294447(86H1735).

This plan shows horizontal ground-level distances unless otherwise specified. To compute grid distances, multiply ground-level distances by the average combined factor of 0.9995130 which has been derived from control monument 939447(86H1740).

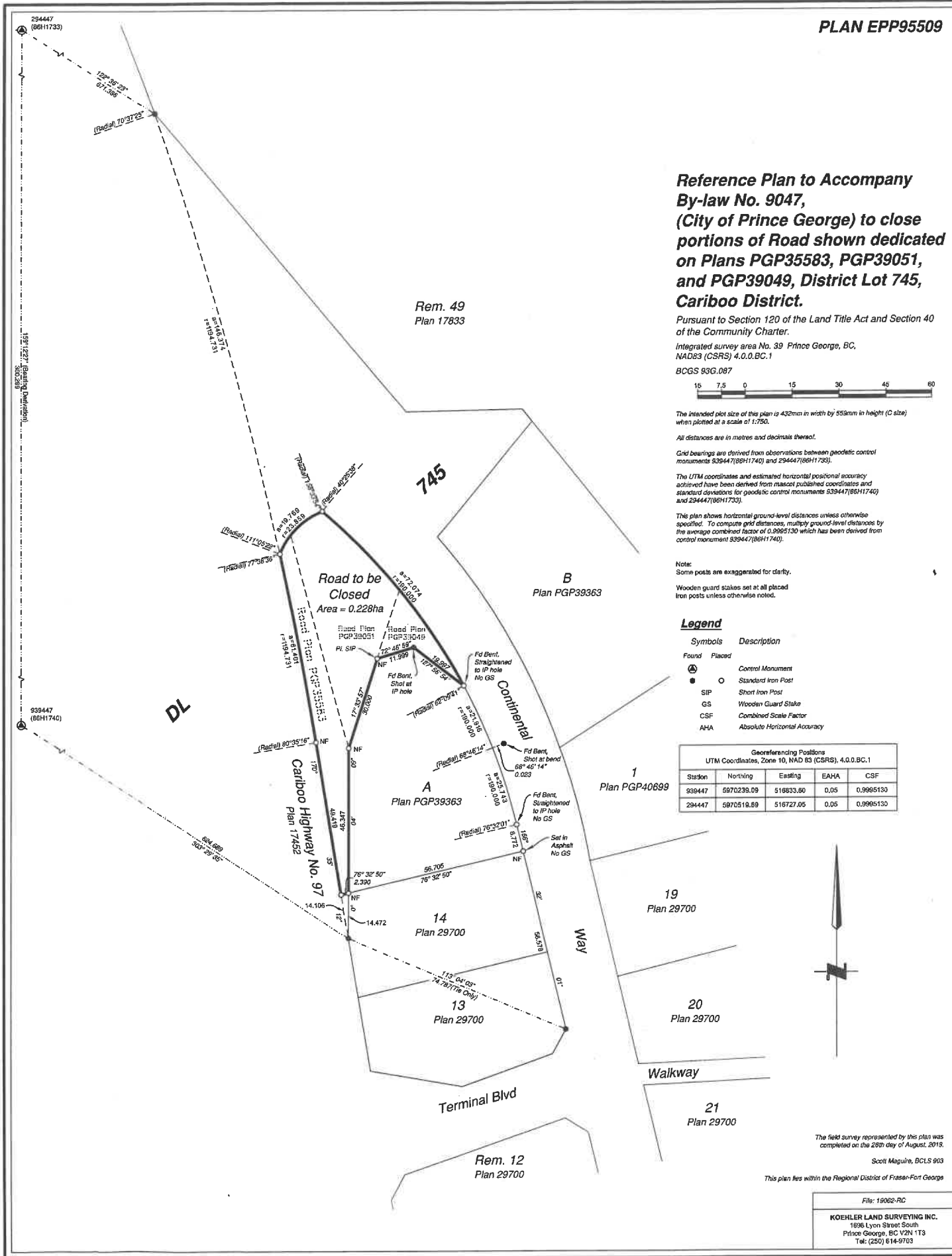
Note:  
Some posts are exaggerated for clarity.

Wooden guard stakes set at all placed iron posts unless otherwise noted.

**Legend**

Symbols	Description
Found	Placed
●	Control Monument
○	Standard Iron Post
●	Short Iron Post
●	Wooden Guard Stake
CSF	Combined Scale Factor
AHA	Absolute Horizontal Accuracy

Georeferencing Positions UTM Coordinates, Zone 10, NAD 83 (CSRS), 4.0.0.BC.1				
Station	Northing	Easting	EAHA	CSF
939447	5970239.09	518833.80	0.05	0.9995130
294447	5970519.89	516727.05	0.05	0.9995130



The field survey represented by this plan was completed on the 28th day of August, 2019.

Scott Maguire, BCLS 903

This plan lies within the Regional District of Fraser-Fort George

File: 19062-RC

KOEHLER LAND SURVEYING INC.  
1636 Lyon Street South  
Prince George, BC V2N 1T3  
Tel: (250) 614-9703