

DAVID DOUGLAS BOTANICAL GARDEN



Project Overview

Overall Capital Project Budget

- \$5.9 million

Project Phases and Timeline

- **Current Demonstration Garden – Phase 1**
- **Expansion Project**
 - Phase 2 – \$2.87 million - 2020 - 2022
 - Phase 3 – \$1.74 million - 2 years later 2024 - 2026
 - Phase 4 – \$1.29 million – 2 years later 2028 -

Fundraising Plans

- Grants, In-kind donations plus individual and corporate donor campaigns

In collaboration with UNBC, the David Douglas Botanical Garden Society (DDBGS) commenced development of Phase 1- 2.65 acre Display Gardens in 2002

DISPLAY GARDENS

An aerial photograph of the University of Northern British Columbia (UNBC) campus. The image shows several large, modern academic buildings with light-colored facades and multiple stories. A large parking lot filled with cars is visible in the foreground. A semi-transparent green area is overlaid on the landscape, indicating the location of the 'Display Gardens'. The surrounding area is densely forested with trees showing vibrant autumn colors in shades of yellow, orange, and red. A road is visible at the bottom of the frame.

Over the past 16 years development has included the Alice Wolczuk Memorial Alpine Berm, Rocky Mountain Berm, Perennial Gardens, Thyme Garden, Lilac Walk, Pavilion Gardens, connecting walking trails and signage.



Extensive fund raising in 2005- 2006 allowed for the design
and construction of several feature items

NOVAK FAMILY FOUNDATION
WATERFALL FEATURE



IKE BARBER BRIDGE

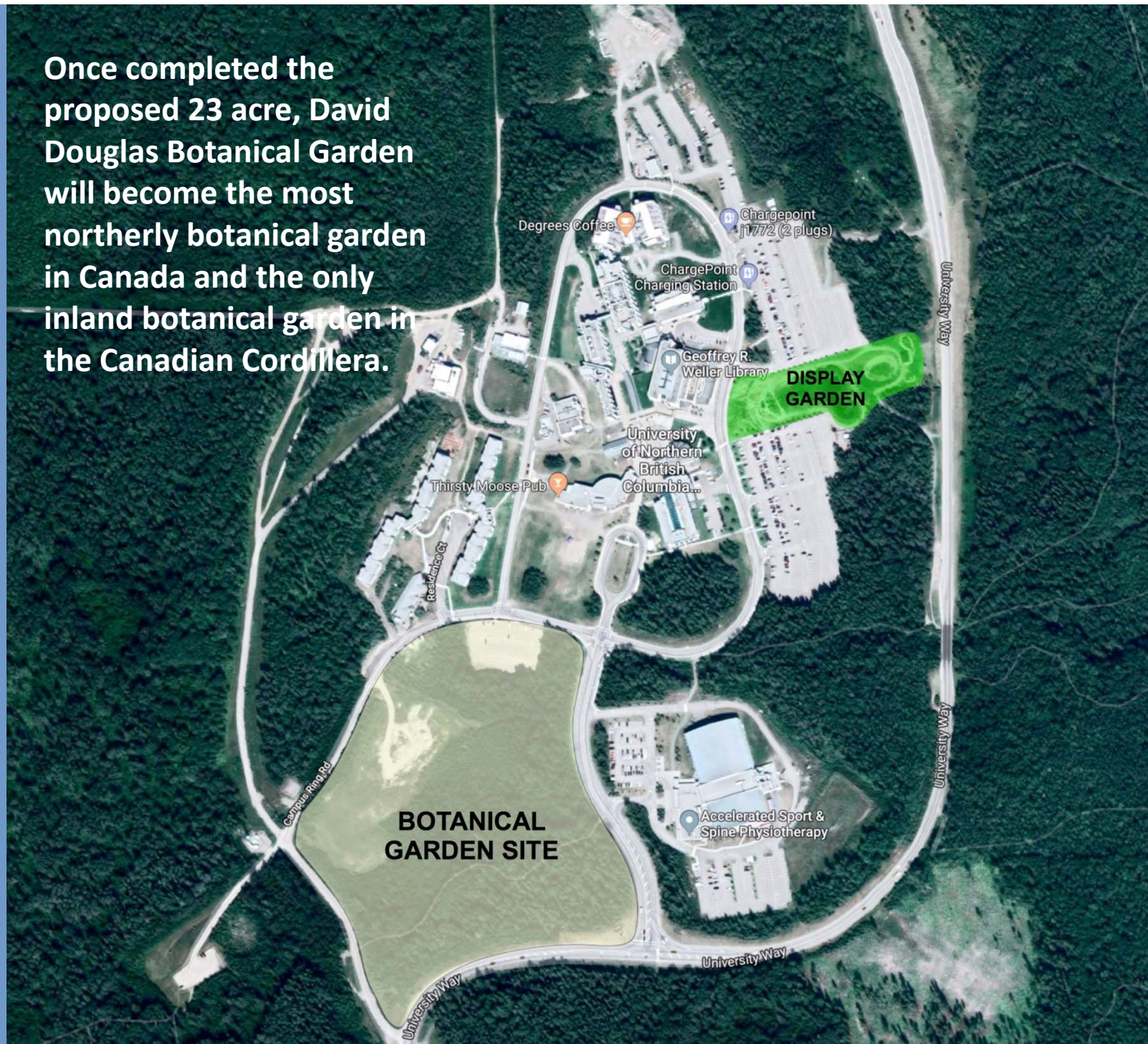


ROTARY PAVILLION

In excess of \$ 1.1 million in funds, donations-in-kind, donated equipment, labour, and design services have been contributed to date.

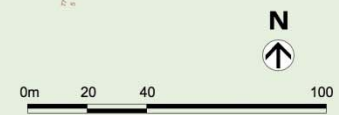


Once completed the proposed 23 acre, David Douglas Botanical Garden will become the most northerly botanical garden in Canada and the only inland botanical garden in the Canadian Cordillera.

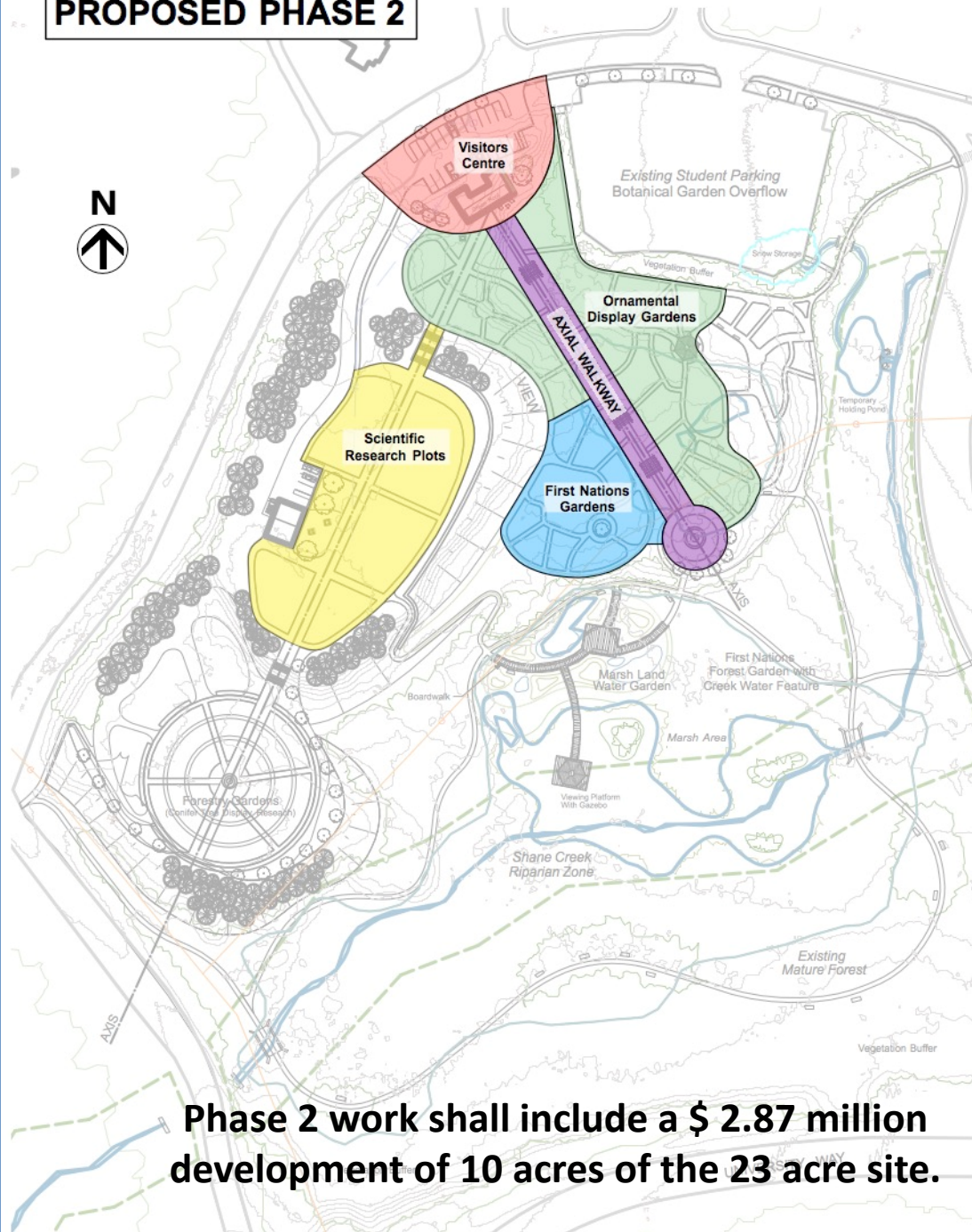




Developed in 3 phases, the \$ 5.9 million botanical garden's concept design includes several theme gardens, research plots, mature indigenous forest and wetland display.



PROPOSED PHASE 2

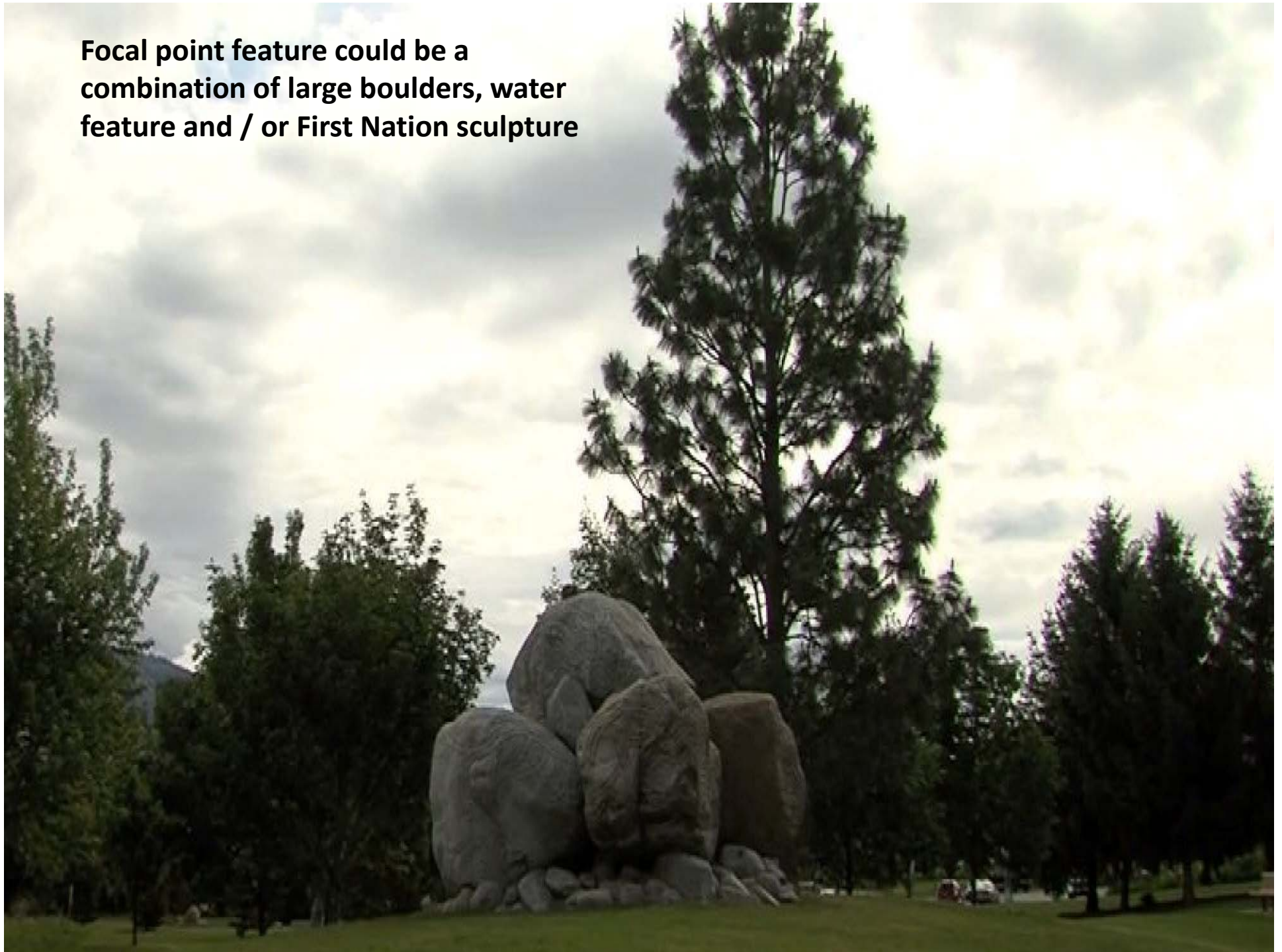


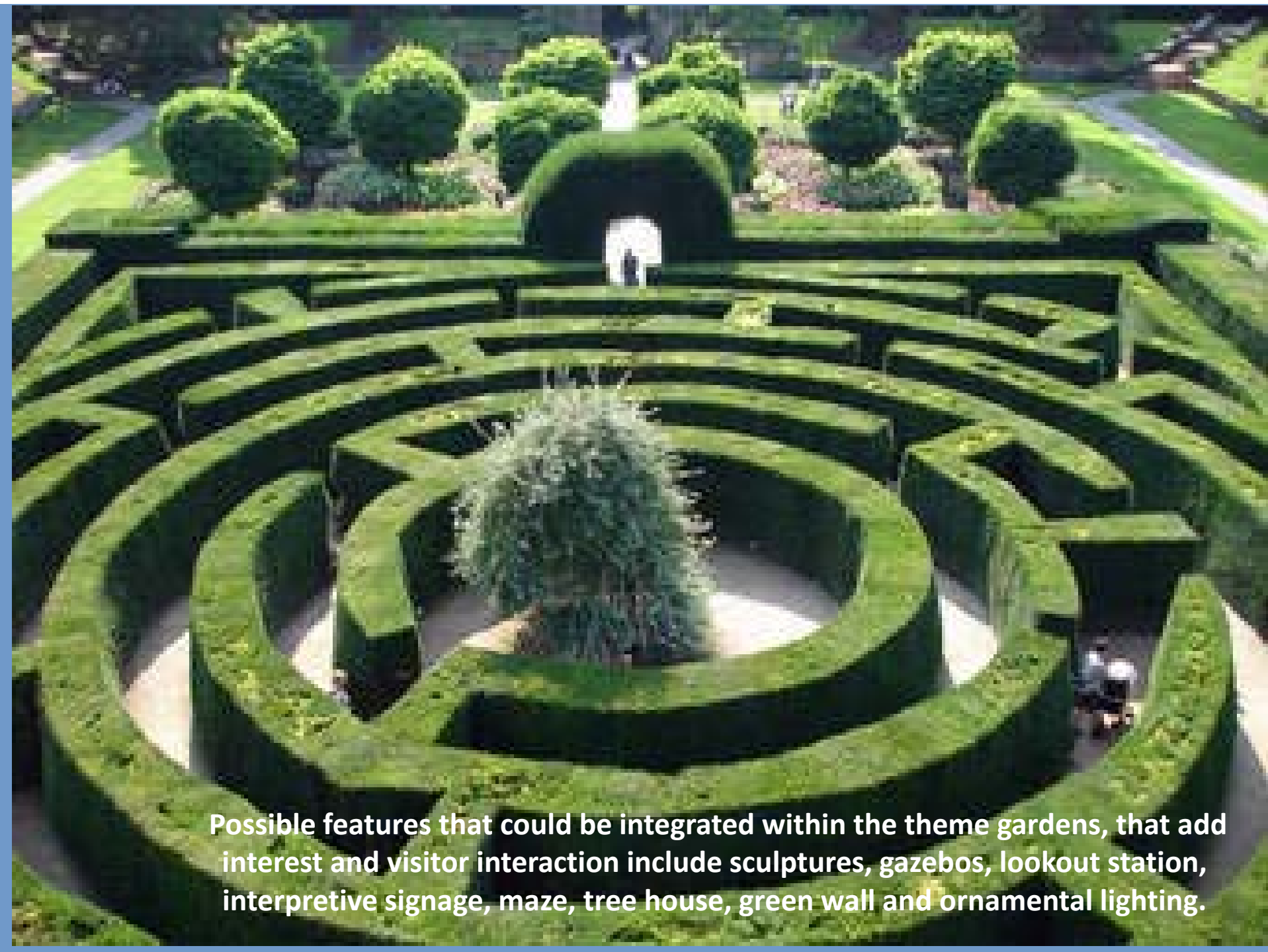
Phase 2 work shall include a \$ 2.87 million development of 10 acres of the 23 acre site.



Along the main axis will be benches, sponsor recognition, and various secondary pathways leading to ornamental display gardens.

Focal point feature could be a combination of large boulders, water feature and / or First Nation sculpture





Possible features that could be integrated within the theme gardens, that add interest and visitor interaction include sculptures, gazebos, lookout station, interpretive signage, maze, tree house, green wall and ornamental lighting.



Rose Garden



Green Wall



Ornamental and seasonal lighting, wood archways, interpretive signage, and rock features add interest to the various theme gardens.

Possible features include development of a medicinal garden, smudging pavilion, First Nation pieces of art, open fire pit, natural water feature, interpretative signage and quiet areas to reflect.



Dakelh-style Pit House

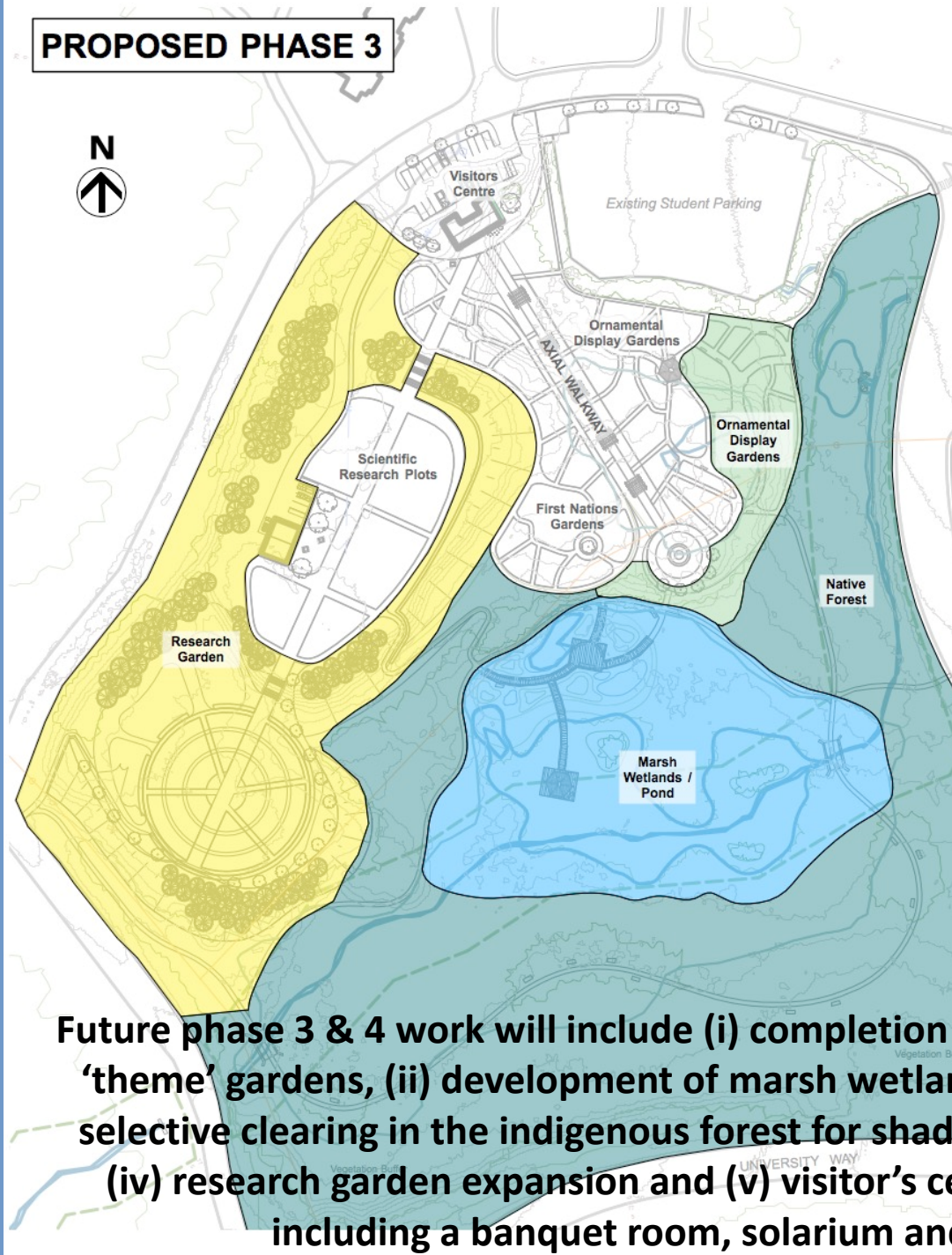




Possible research projects that compliment the botanical garden goals include (i) testing of northern vegetables and fruit hybrids, (ii) forestry seedling experiments, (iii) community garden for UNBC students living on campus, and (iv) solar powered greenhouse propagation program.



PROPOSED PHASE 3



Future phase 3 & 4 work will include (i) completion of the ornamental 'theme' gardens, (ii) development of marsh wetlands and pond, (iii) selective clearing in the indigenous forest for shade tolerant plants, (iv) research garden expansion and (v) visitor's centre expansion including a banquet room, solarium and cafe.

Proposed marsh wetlands and pond to increase water fowl and bird populations and associated viewing opportunities.





**Cable tree walkway provides an
unique view of the forest.**



Cleared areas in a mature forest provide the opportunity to propagate a wide variety of shade tolerant shrubs, perennials, ferns, and mosses.

A photograph of a winter landscape. In the foreground, a stream flows through a snow-covered area. The banks are covered in snow and some trees are visible. The background shows a dense forest of trees, some of which are covered in snow. The overall scene is peaceful and serene.

We believe the David Douglas Botanical Garden will inspire visitors and enhance the quality of life in our community by nourishing and sharing the beauty of gardens, the joy of gardening; and become a locally treasured source of pride and education.