

SUBDIVISION PLAN

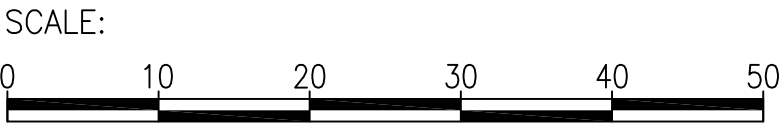
PLAN EPP95372

Of Lots 1,2, 14 thru 21, 25 thru 33, 37 thru 40  
Block 118 Plan 1268 and Lot C Plan EPP4443  
And of Closed Lane as Shown on Plan EPP95371  
All of District Lot 343 Cariboo District

Pursuant to Section 67 of the Land Title Act.

Integrated Survey Area No. 39 Prince George, BC NAD83(CSRS)  
4.0.0.BC.1

BCGS 93G.097



The intended plot size of this plan is 560mm in width by  
432mm in height (C size) when plotted at a scale of 1:500.

LEGEND:

| Symbols Found | Description                 |
|---------------|-----------------------------|
|               | Control Monument            |
|               | Standard Iron Post          |
|               | Unmarked measured point     |
|               | Combined Factor             |
|               | Estimated Absolute Accuracy |
|               | No. or #                    |

NOTES:

Grid bearings are derived from observations between geodetic control monuments 85H1291 and 85H1054.

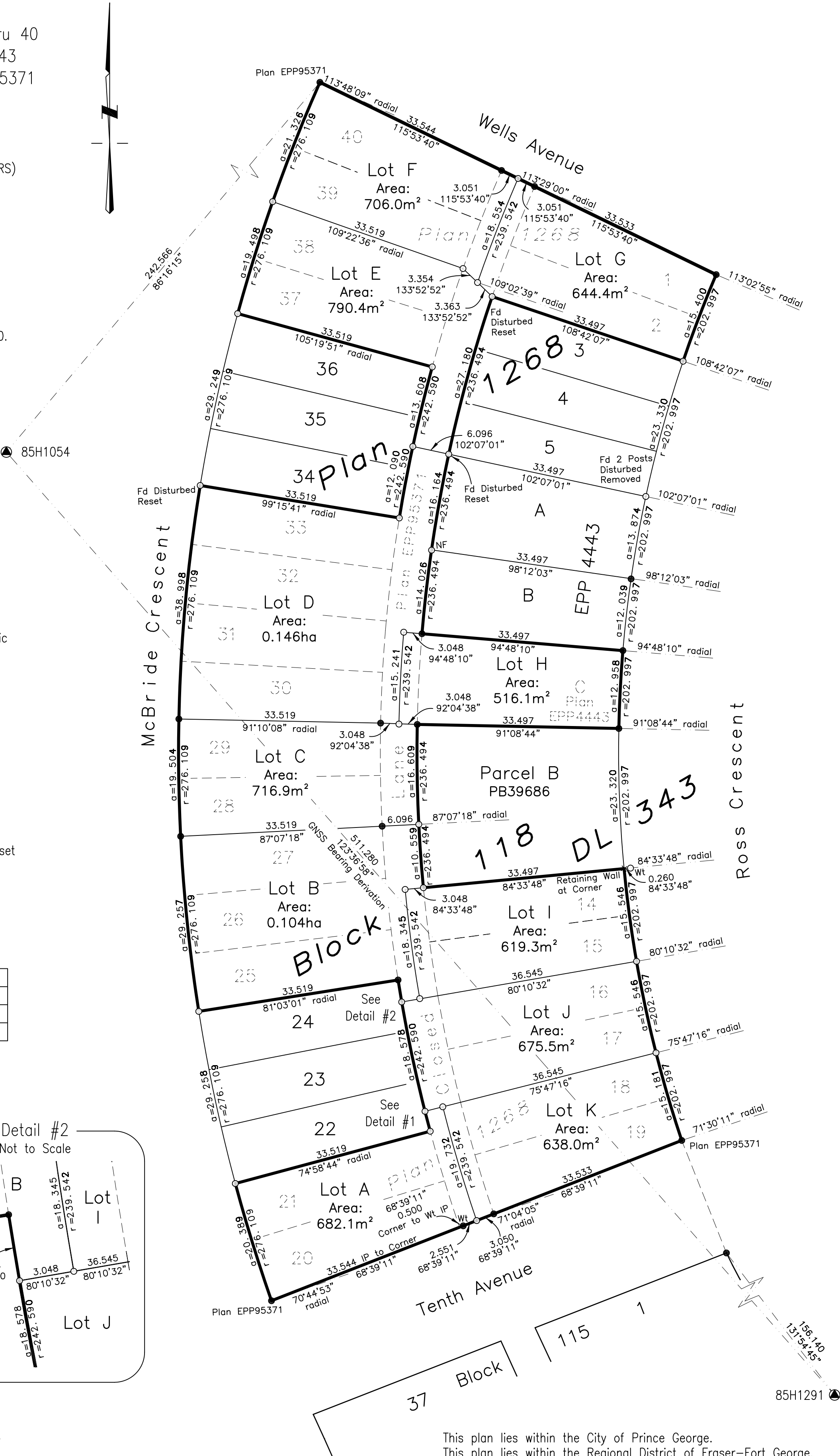
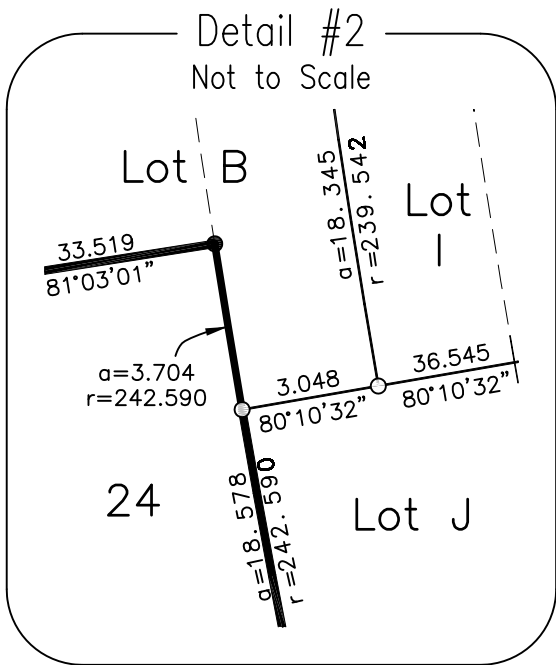
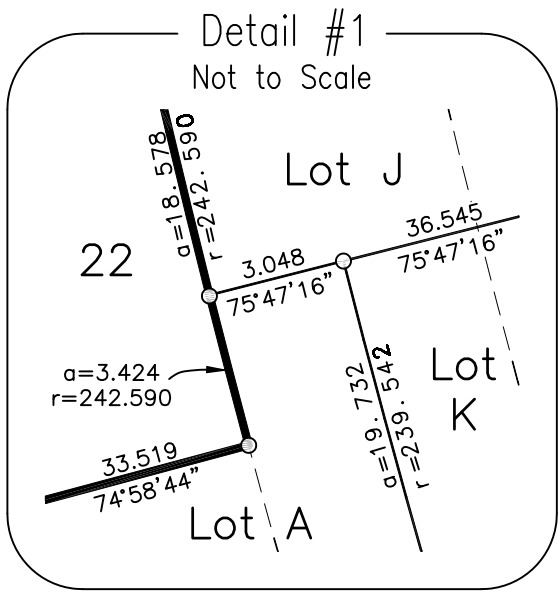
The UTM coordinates and estimated horizontal positional accuracy achieved have been derived from Mascot published coordinates and standard deviations for geodetic control monument 85H1291.

This plan shows horizontal ground-level distances, unless otherwise specified. To compute grid distances, multiply ground-level distances by the average combined factor of 0.999514 which has been derived from control monument 85H1291.

This plan shows one or more witness posts which are not set on the true corner(s).

UTM COORDINATES: (Published)

| NAD 83 (CSRS) 4.0.0.BC.1, Zone 10 |            |           |          |      |
|-----------------------------------|------------|-----------|----------|------|
| Station                           | Northing   | Easting   | CF       | EAA  |
| 85H1291                           | 5974107.74 | 515771.23 | 0.999514 | 0.10 |
| 85H1054                           | 5974390.69 | 515345.68 | 0.999513 | 0.10 |



This plan lies within the jurisdiction of the Approving Officer  
for the City of Prince George, File No. SD100602.

This plan lies within the City of Prince George.  
This plan lies within the Regional District of Fraser-Fort George.

The field survey represented by this plan was completed on the  
17th day of October, 2019.

Gina MP Hidber, BCLS 871



Prince George  
203-1300 1st Ave.  
Prince George, BC V2L 2Y3  
250.640.2287

Smithers  
3750 1st Ave. PO Box 536  
Smithers, BC V0J 2N0  
250.847.3808

www.HBHLandSurveying.com

HBH File No. CPG1901