

Reference Plan to accompany Bylaw No. 9061 (Prince George) closing part of Lane within Block 227, shown dedicated on Plan 1268, District Lot 343, Cariboo District.

PURSUANT TO SECTION 120 OF THE LAND TITLE ACT AND SECTION 40 OF THE COMMUNITY CHARTER.

Integrated survey area No. 39 Prince George, BC, NAD83 (CSRS) 4.0.0.BC.1

BCGS 93G.097



The intended plot size of this plan is 864mm in width by 559mm in height (D size) when plotted at a scale of 1:400.

All distances are in metres and decimals thereof.

Grid bearings are derived from observations between geodetic control monuments 85H1086 and 85H1077.

The UTM coordinates and estimated absolute accuracy achieved have been derived from masco published coordinates and standard deviations for geodetic control monuments 85H1086 and 85H1077.

This plan shows horizontal ground-level distances unless otherwise specified. To compute grid distances, multiply ground-level distances by the average combined factor of 0.9995155 which has been derived from control monument 85H1086.

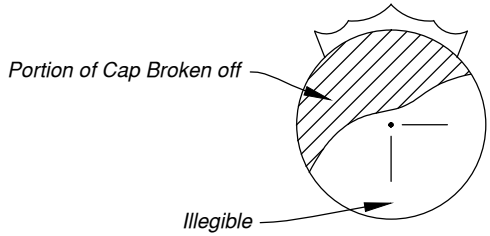
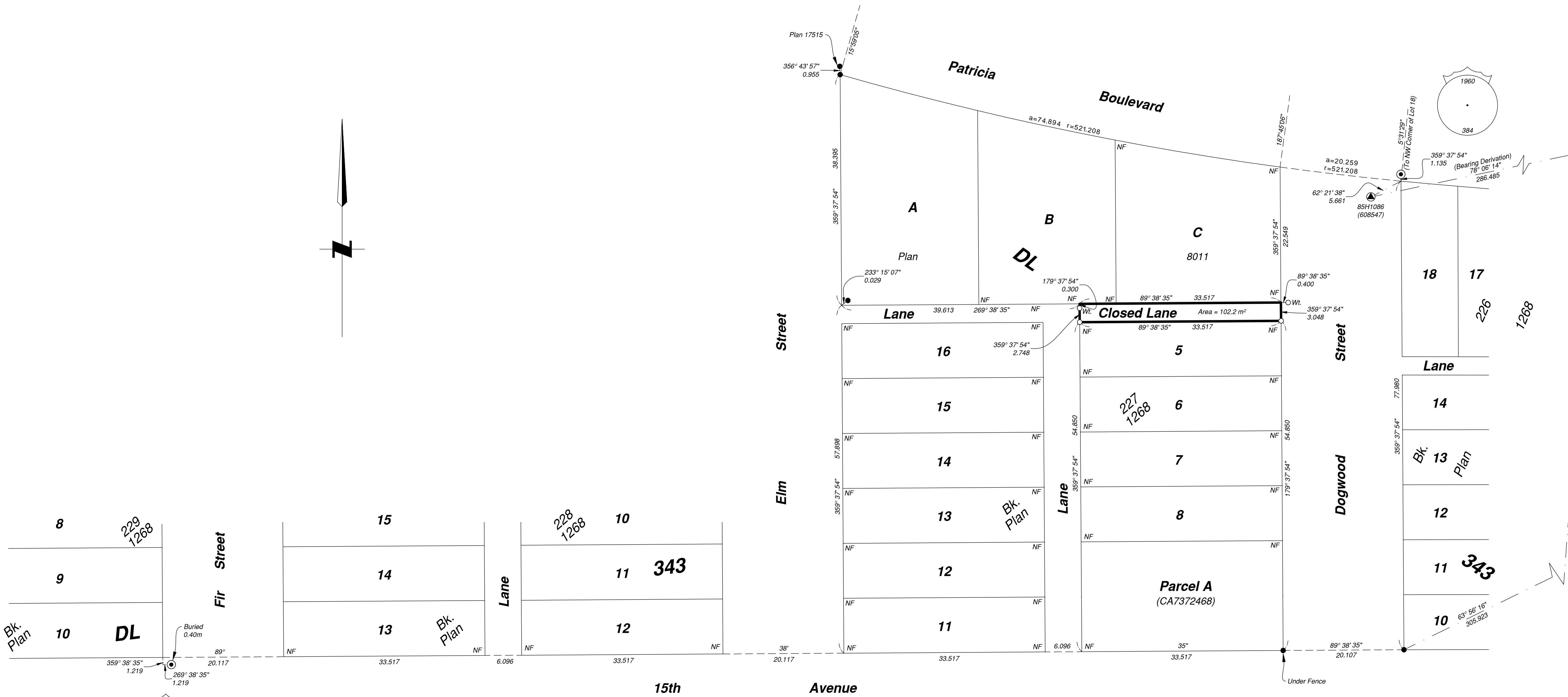
Note: This plan shows one or more witness posts which are not set on the true corner(s).

Some posts are exaggerated for clarity. Guard stakes are set at every post set unless otherwise noted.

Legend

Symbols	Description
Found	Placed
Control Monument	
Standard Iron Post	
Standard Concrete Post	
CSF	Combined Scale Factor
EAA	Estimated Absolute Accuracy
Bk.	Block

Georeferencing Positions				
UTM Coordinates, Zone 10, NAD 83 (CSRS), 4.0.0.BC.1				
Station	Northing	Easting	EAA	CSF
85H1086	5973679.87	517494.41	0.10	0.9995155
85H1077	5973738.90	517774.61	0.10	0.9995157



The field survey represented by this plan was completed on the 23rd day of October, 2019

Albert Koehler, BCLS 974

This plan lies within the Regional District of Fraser-Fort George

File: 19093-RC

KOEHLER LAND SURVEYING INC.
1698 Lyon Street South
Prince George, BC V2N 1T3
Tel. (250) 614-9703