

880 Guay Road

Rezoning & Official Community Plan

Amendment Application

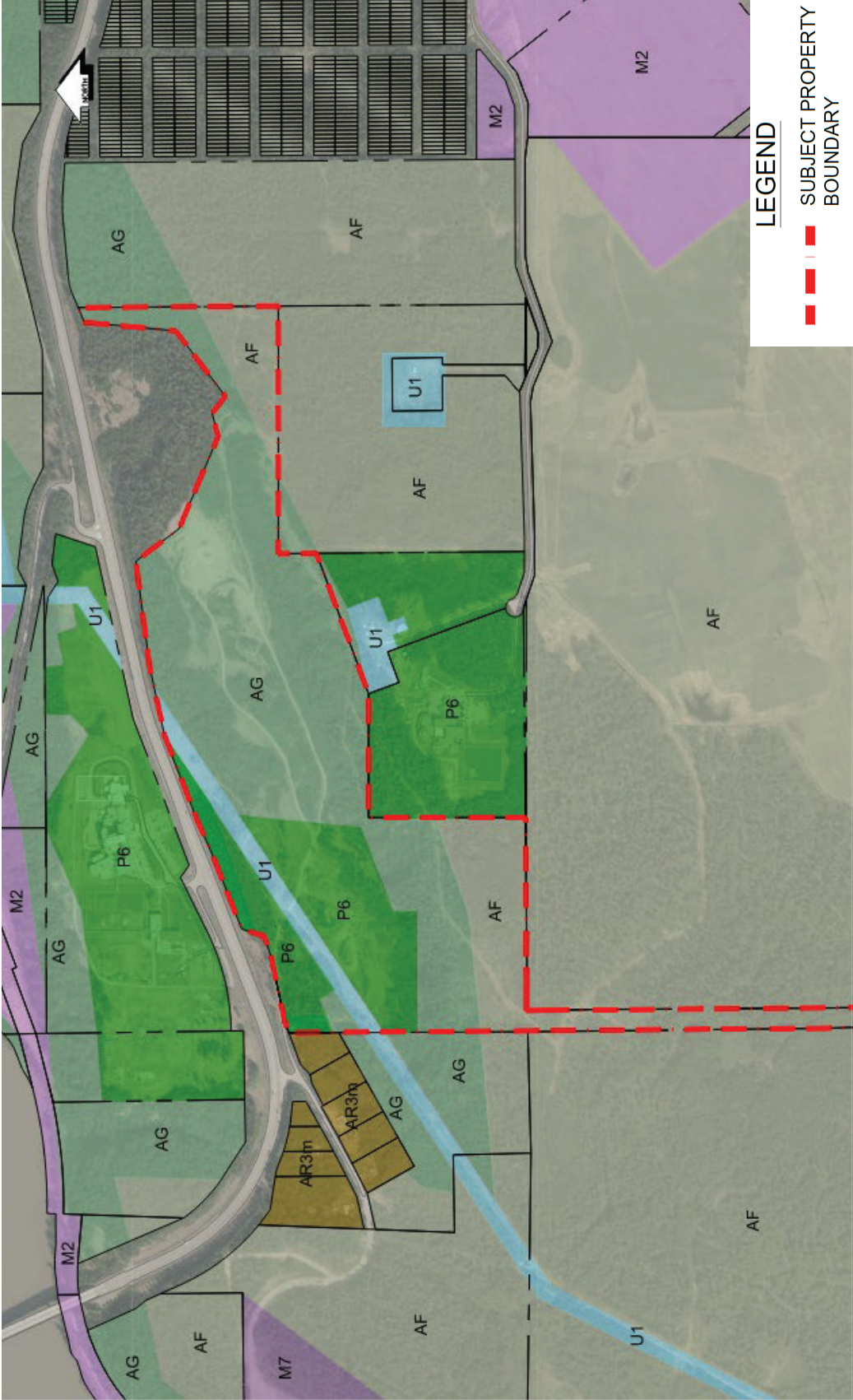
CP100212/RZ100798

L&M Engineering Ltd. on behalf
of Eastway Sand & Gravel Ltd.
Page 47 of 57 of the Handout Package

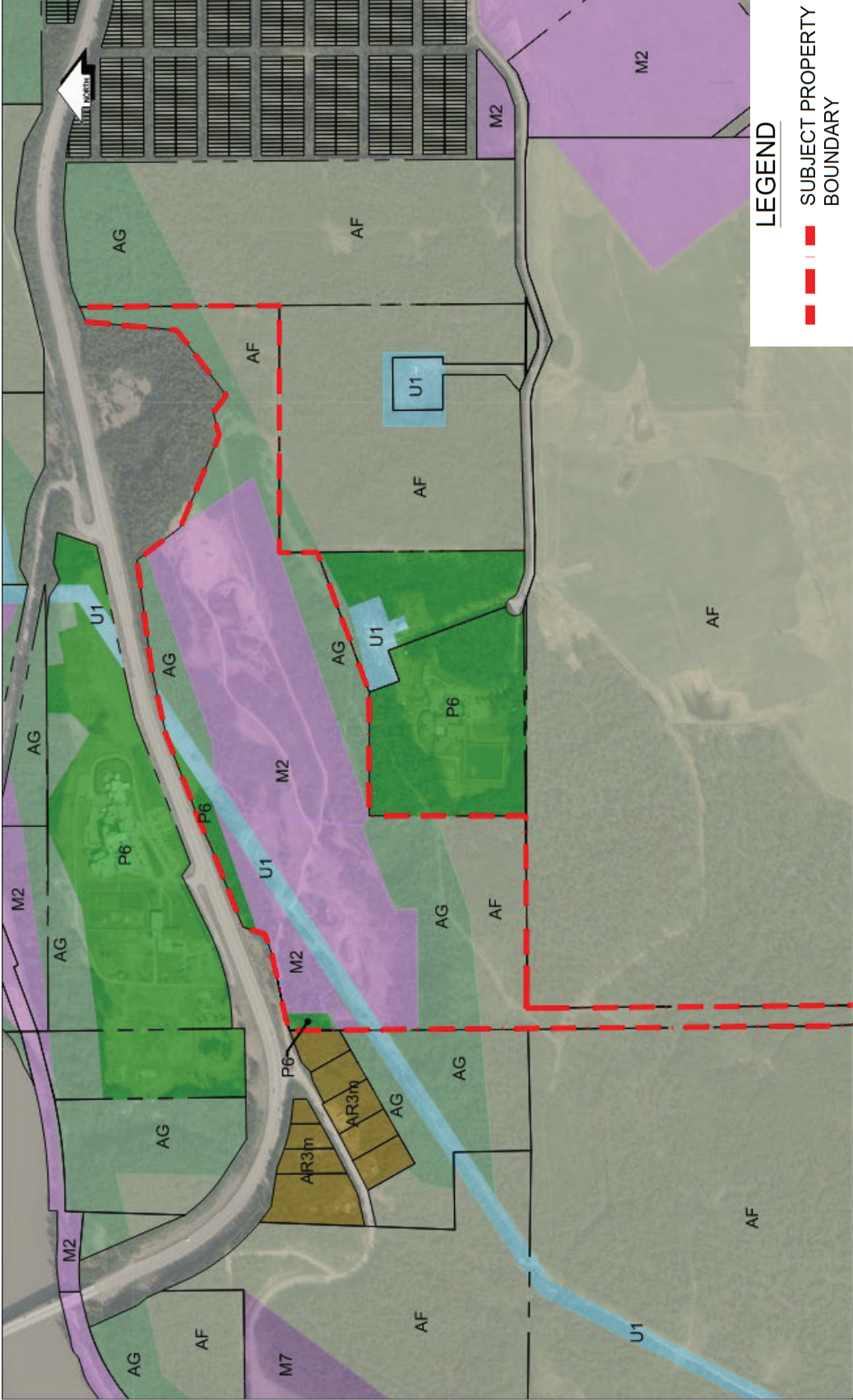
Application Summary

- ◆ Purpose of application
- ◆ Amend zoning on portions of the property
- ◆ Expand existing OCP Future Land Use
- ◆ Clean up land use boundaries

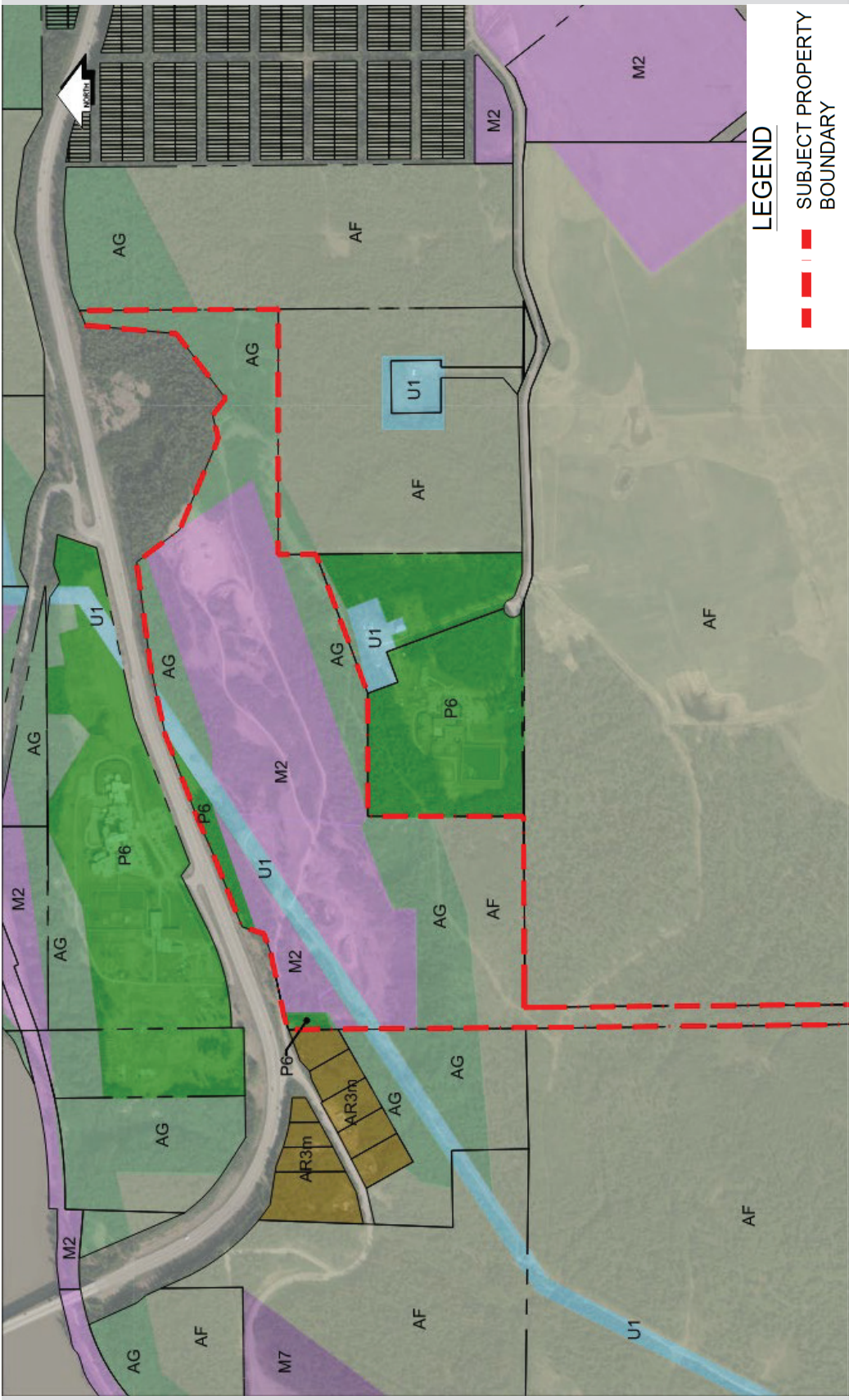




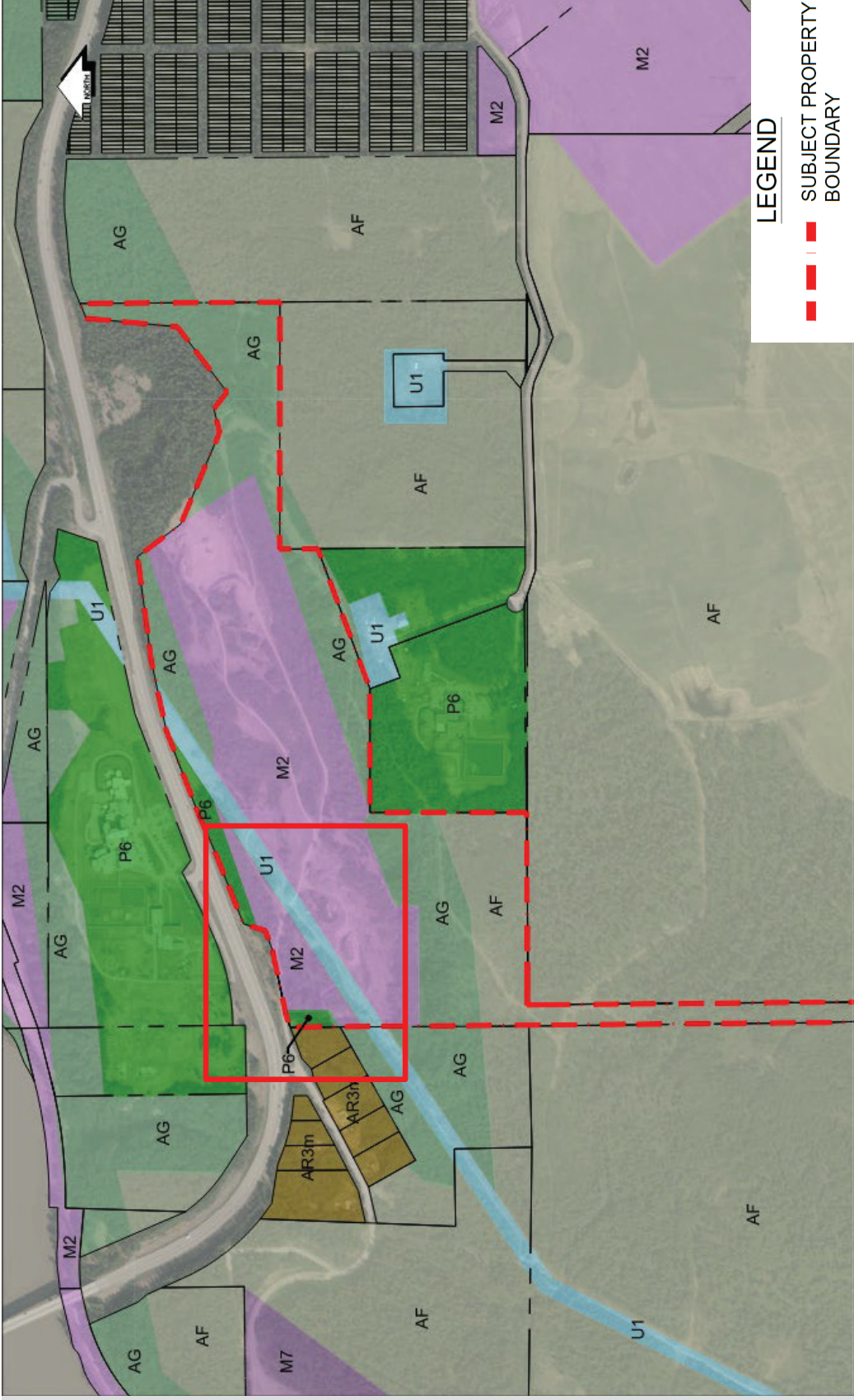
Existing Zoning



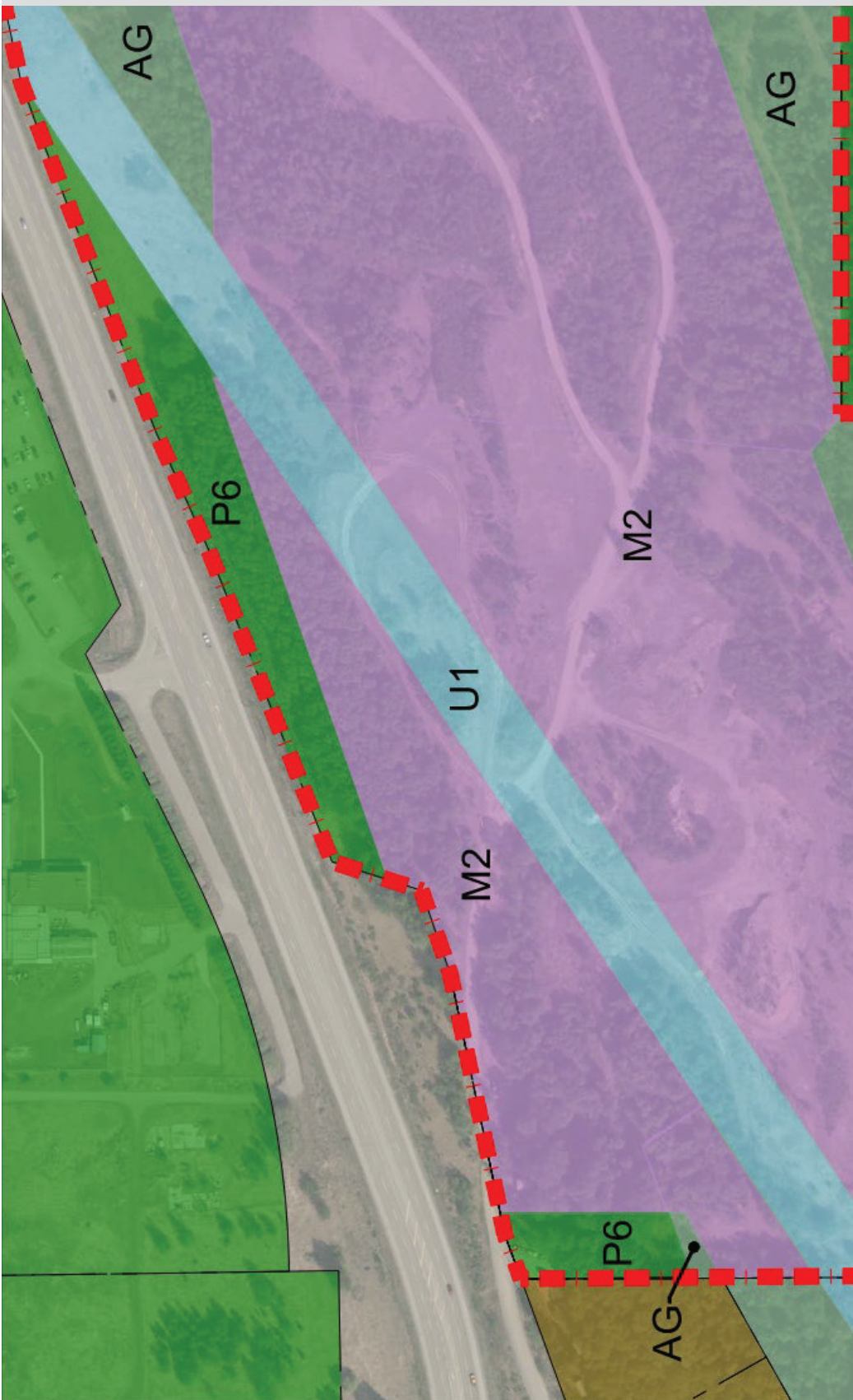
Proposed Zoning - M2



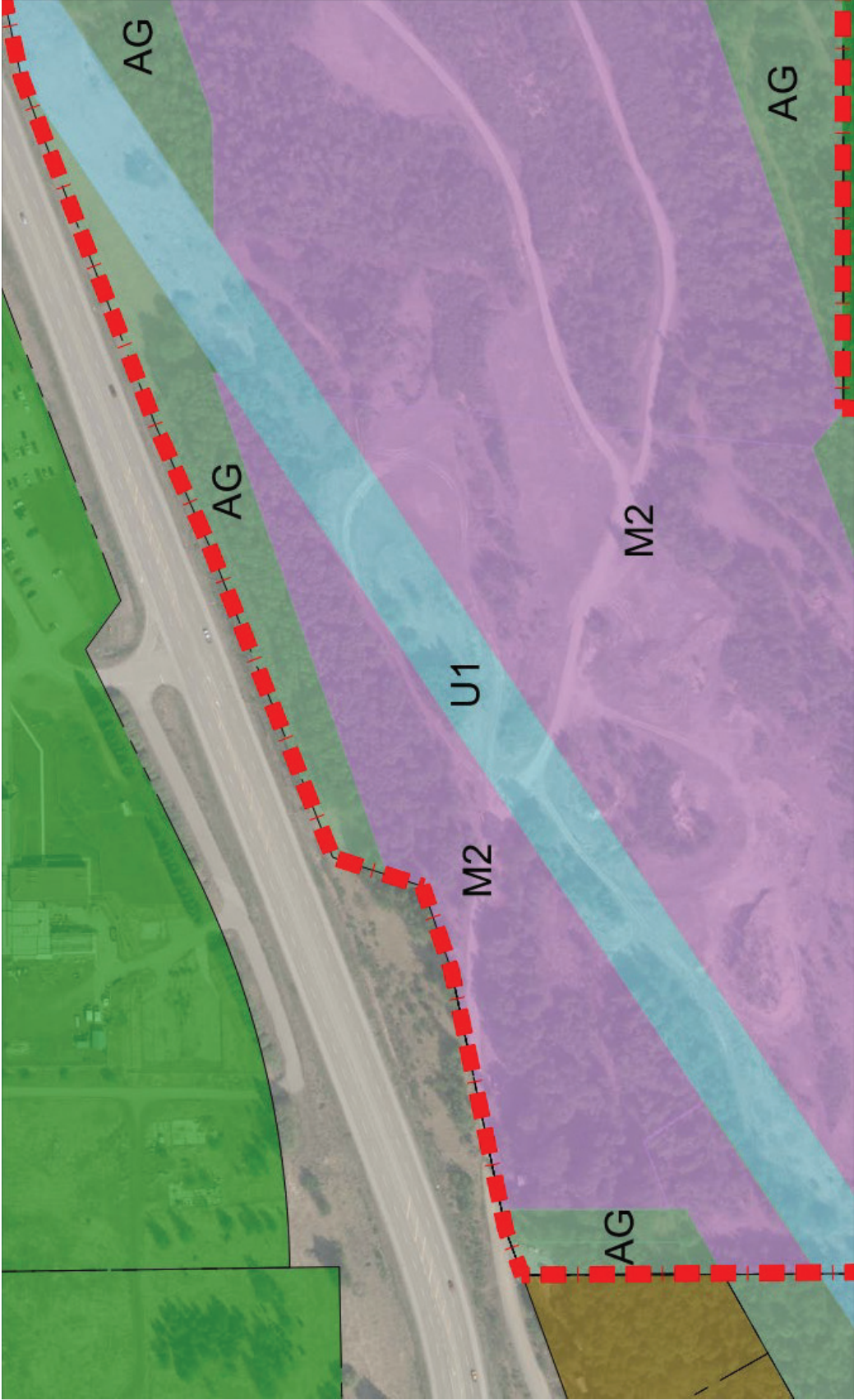
Proposed Zoning - AG



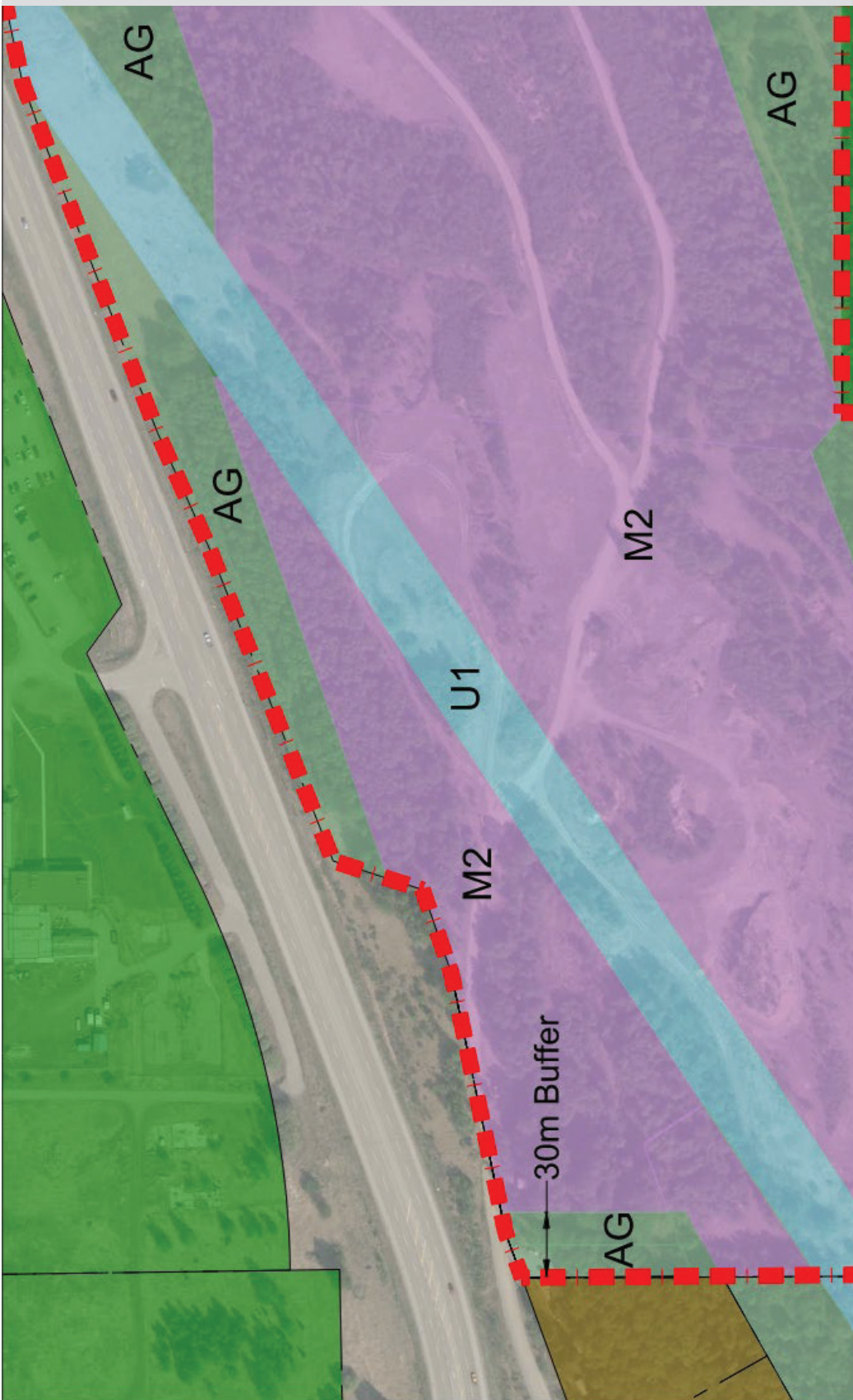
Proposed Zoning - AG



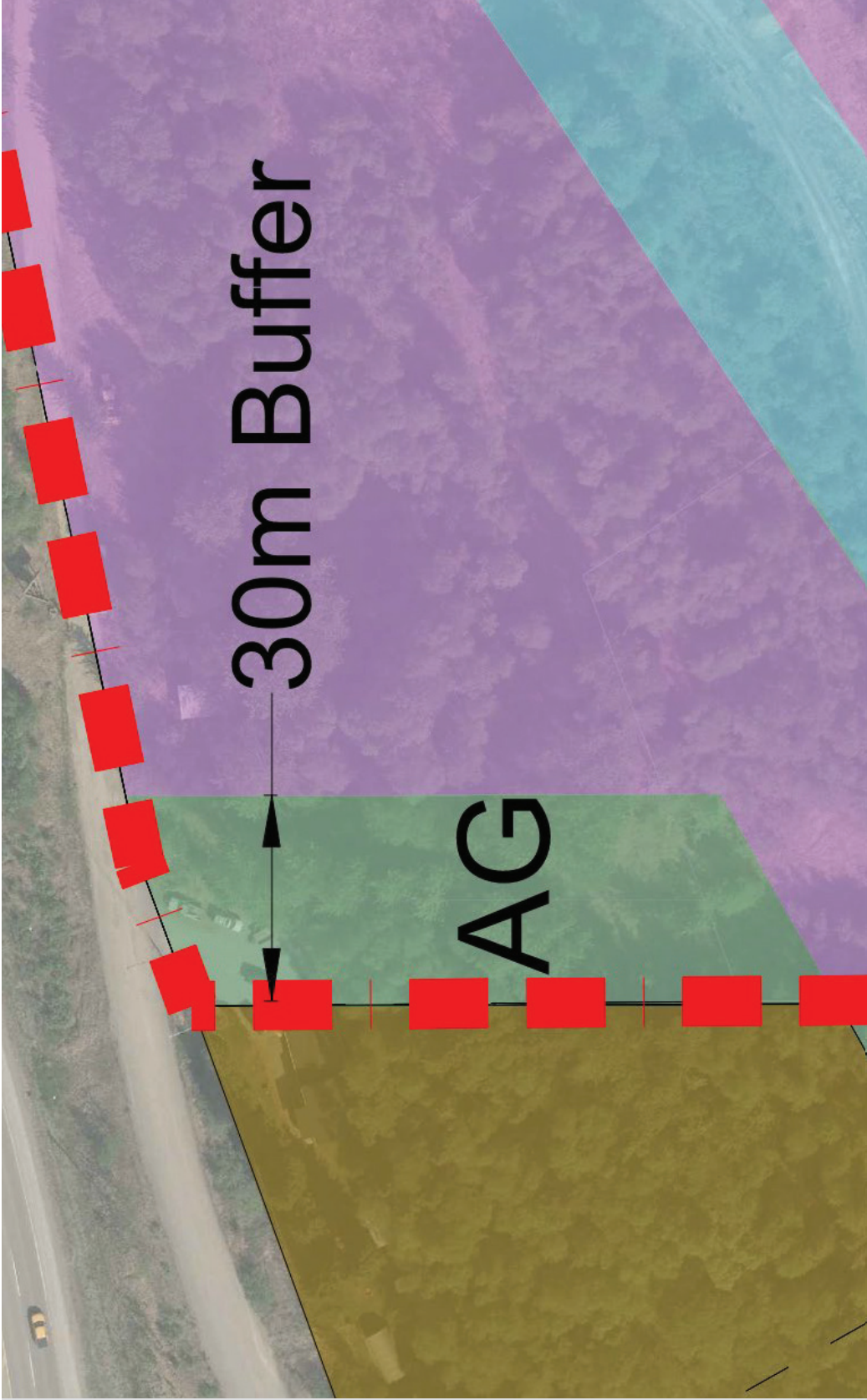
Existing Zoning



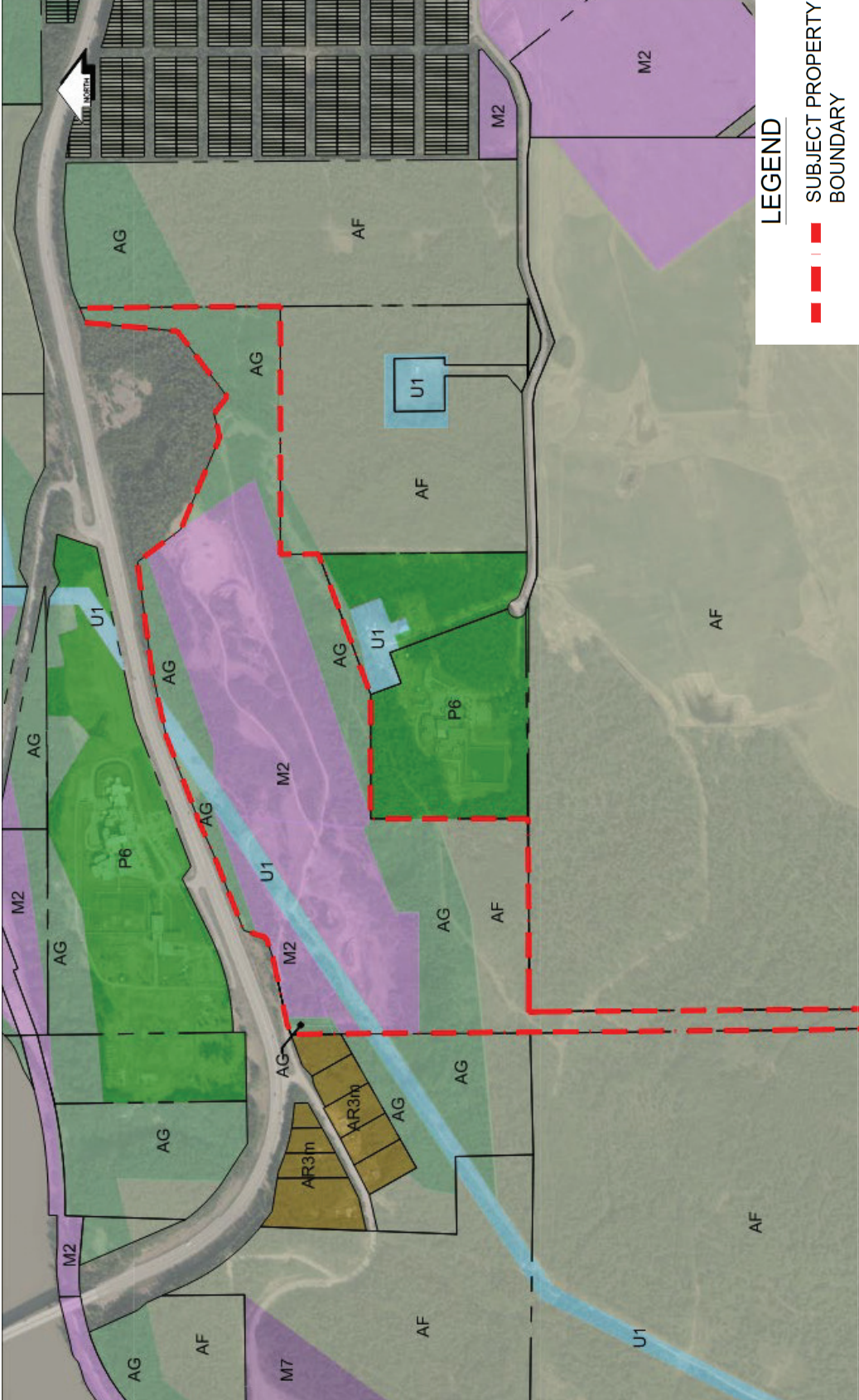
Proposed Zoning - AG



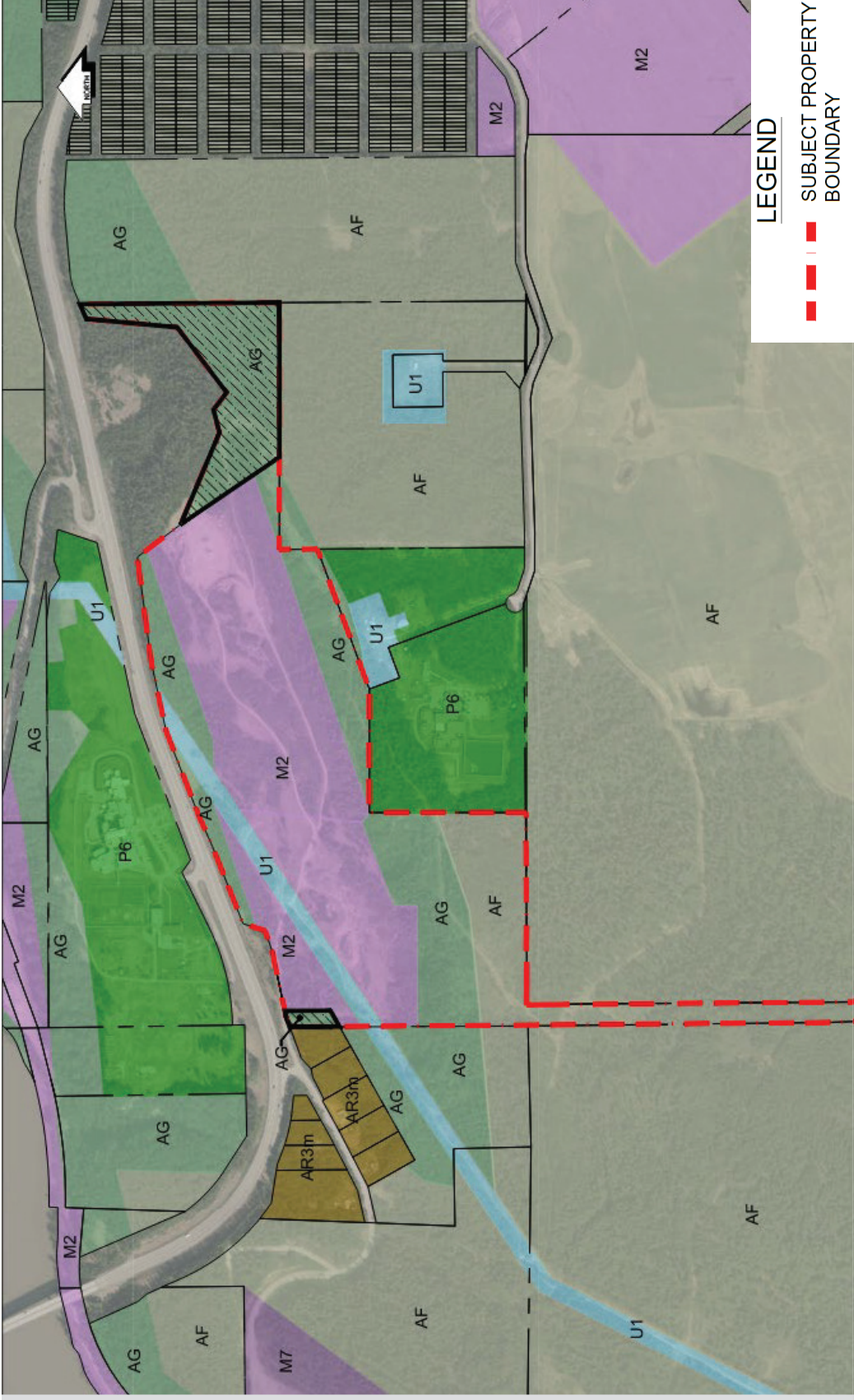
Proposed Zoning - AG Buffer



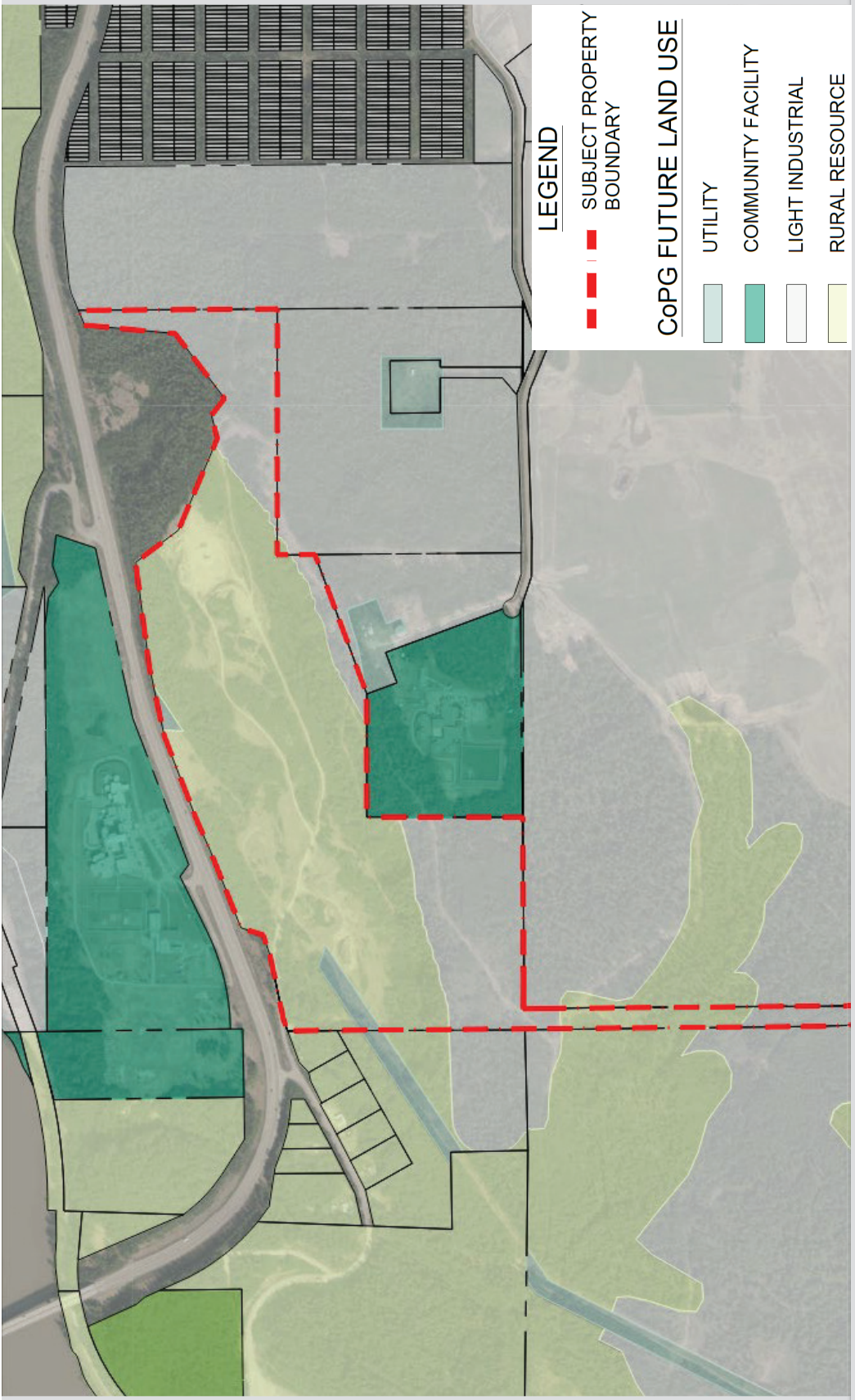
Proposed Zoning - AG Buffer



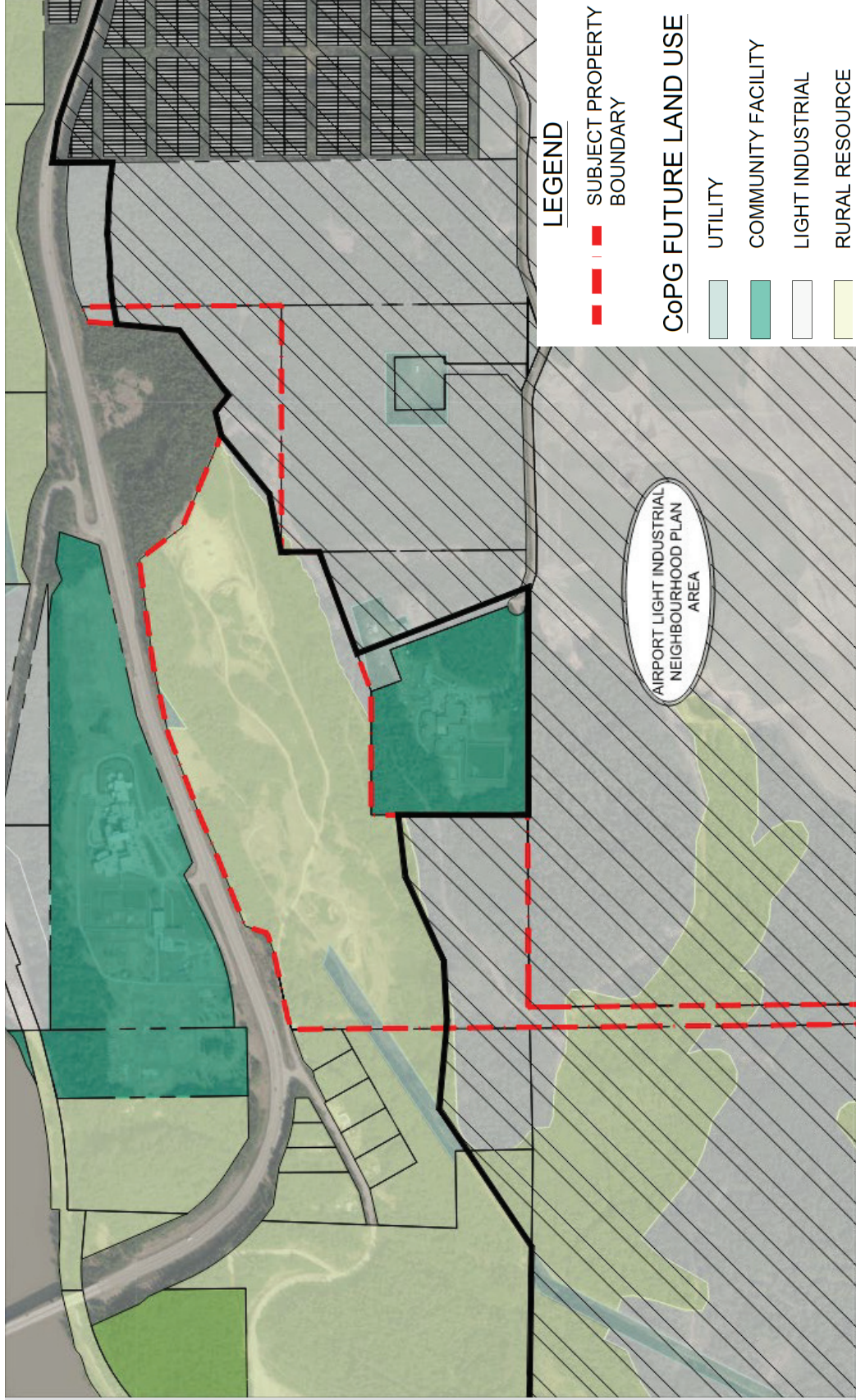
Proposed Zoning - Overall



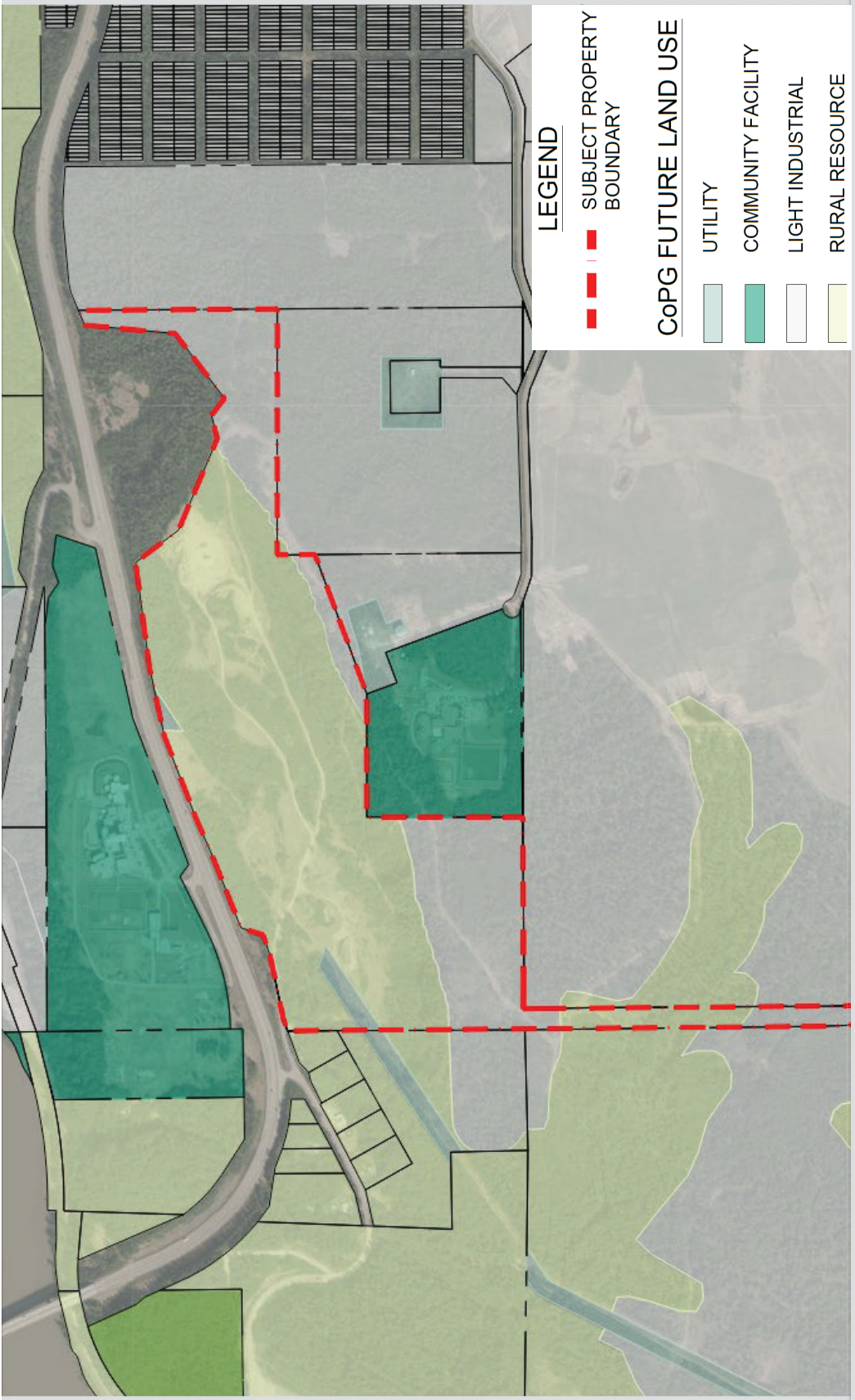
No Build / Do Not Disturb Covenant



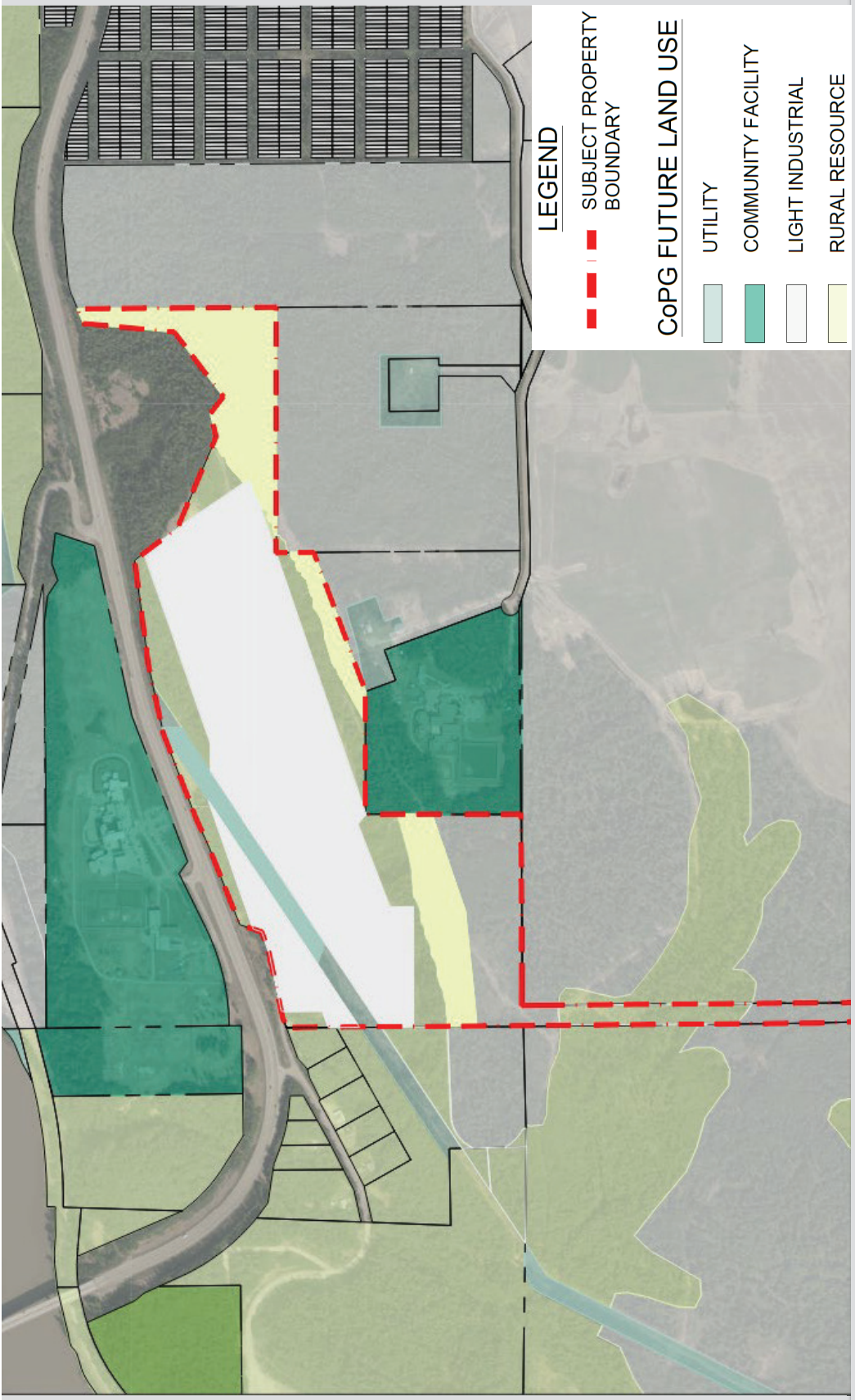
Existing OCP Future Land Use



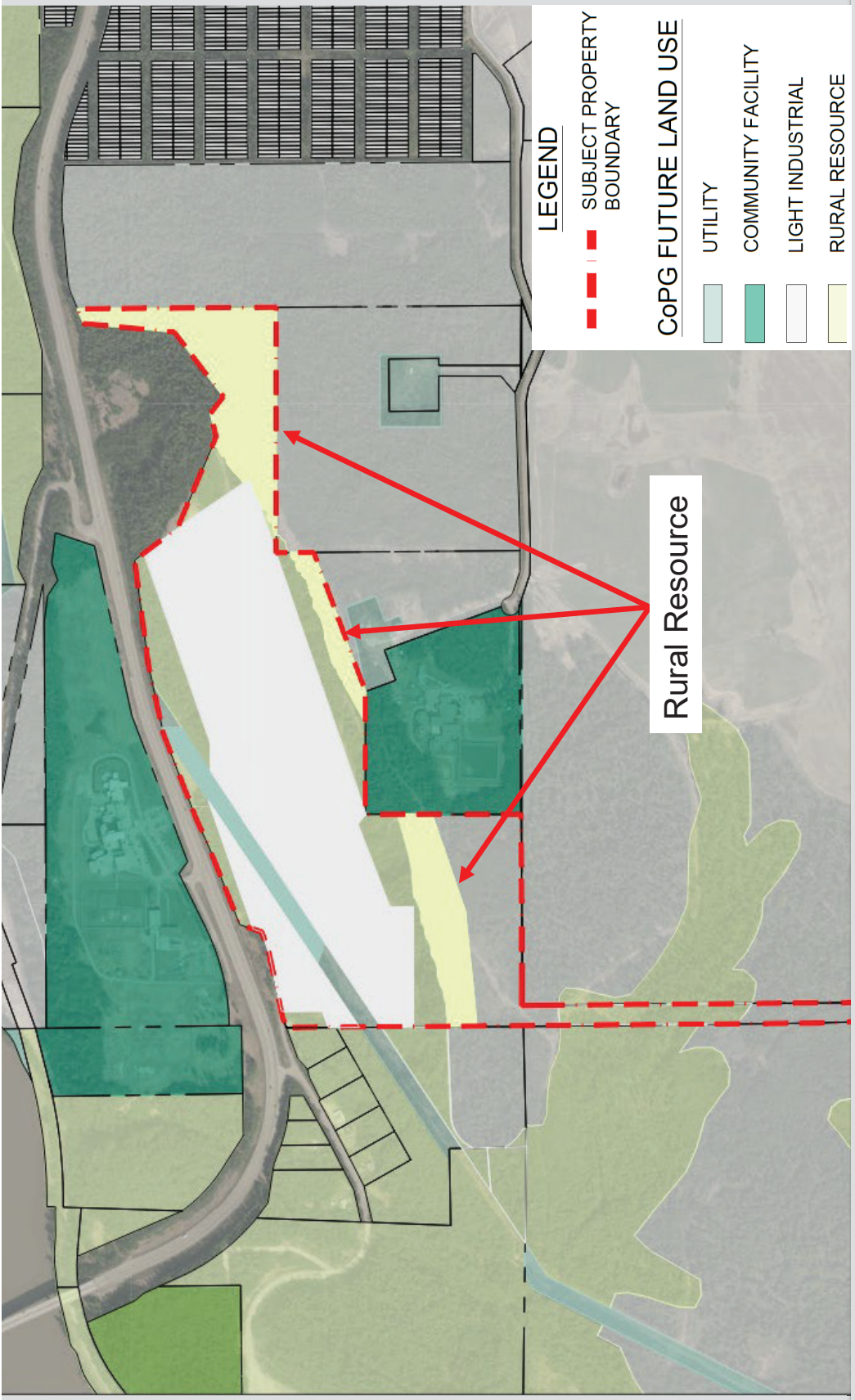
Airport Light Industrial Neighbourhood Plan



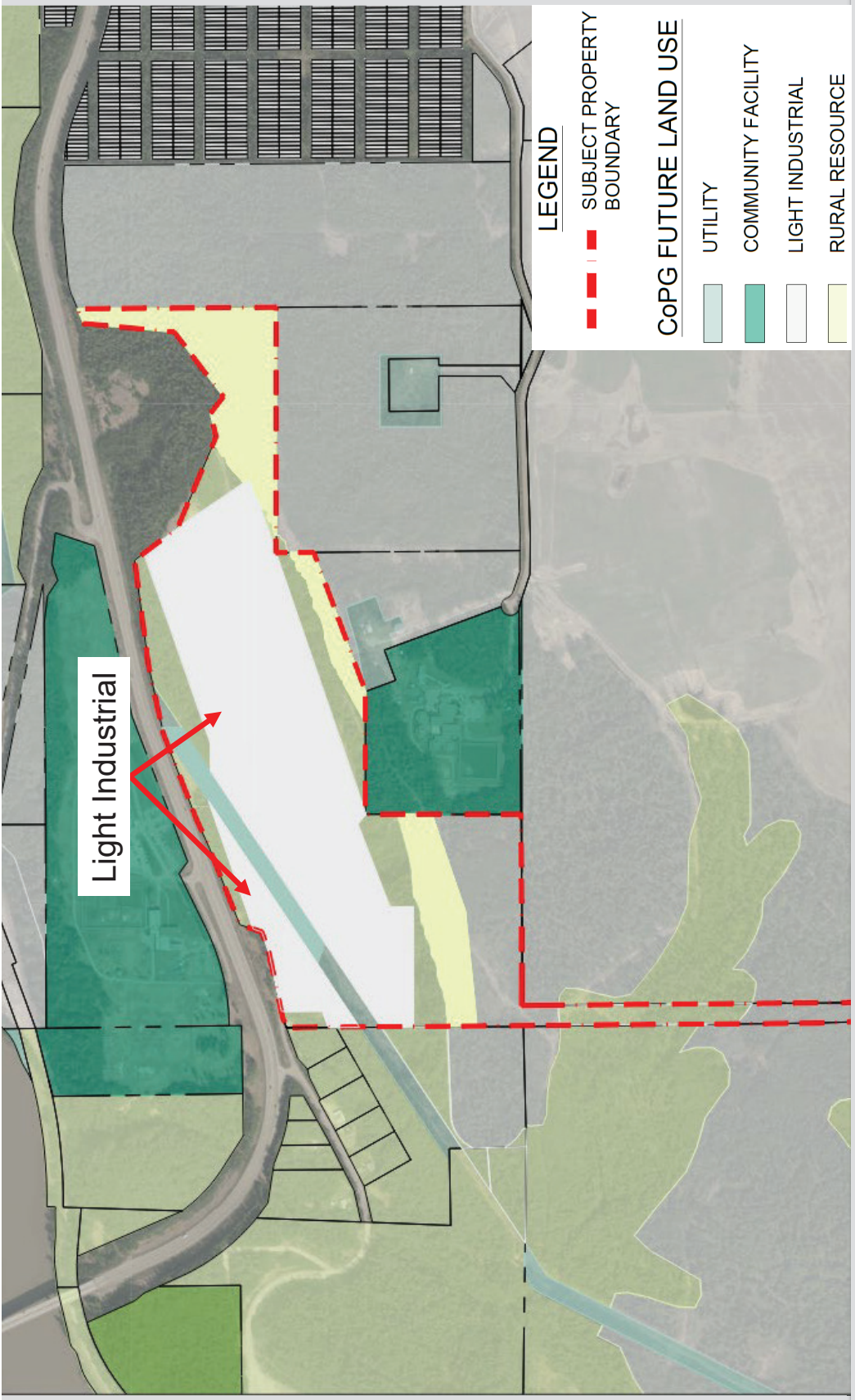
Existing OCP Future Land Use



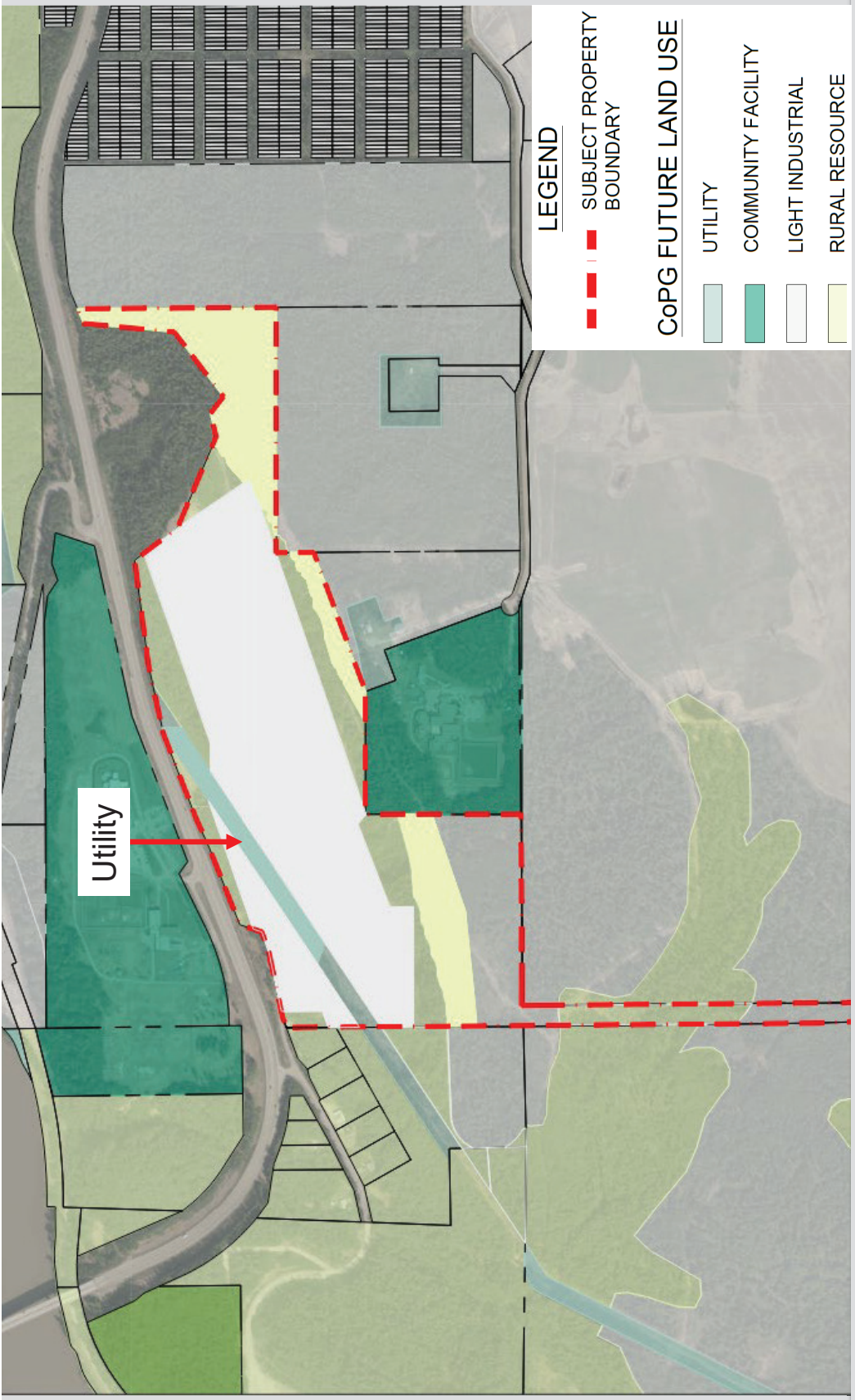
Expanded OCP Future Land Use Areas



Expanded OCP Future Land Use Areas



Expanded OCP Future Land Use Areas



Expanded OCP Future Land Use Areas

Traffic & Servicing

Traffic Overview

- ◆ Traffic Summary Letter
- ◆ Intersection Geometry
- ◆ Road Grade
- ◆ Road Surface

Servicing Overview





Thank you!

L&M Engineering Ltd. on behalf
of Eastway Sand & Gravel Ltd.
Page 67 of 67 of the Handout Package