

# STORMWATER INFRASTRUCTURE FUND

## PUBLIC ENGAGEMENT RESULTS



# Presentation Outline

- How we Informed
- Key Messages
- Survey Results
- What's Next

# How we informed



**24** social media posts  
across **4** platforms (145,402 impressions)



**57** commercials  
on tv

**30** radio ads  
on **2** stations

**1** print ad in the  
Prince George Citizen



**2** digital  
newsletters

**1,650+** web page  
views



**Pop-up  
information  
session**  
at Pine Centre mall



**3** informational  
posters  
created



Media release  
sent to over 900  
subscribers

Stormwater funding survey:  
May 23 to July 26, 2024

**314** survey  
responses



## Dedicated stormwater funding

In simple terms, stormwater management is mostly paid for using property taxes. But since this money isn't set aside just for stormwater, it has to fight for funding along with other things like parks, sidewalks, and city facilities every year.

Creating dedicated stormwater funding will ensure a consistent flow of money reserved solely for stormwater projects. With this approach, we can better manage our stormwater needs, including maintenance, repairs, and upgrades, and ensure there's enough funding available whenever it's needed.

Canadian municipalities spend an average of \$4.2 million per year to operate and maintain their stormwater systems, where Prince George only spends about \$1.8 million per year despite having the most stormwater infrastructure per capita.

# Key Messages

Dedicated funds for stormwater management are a relatively new thing in Canada...

### Municipalities in Canada with dedicated stormwater funding



# Maintaining our stormwater system



# Key Messages

Prince George's stormwater system consists of a massive network of pipes, drains, and other infrastructure that works together to safely divert water.



**440 km**  
of below-ground  
storm sewer pipe



**696 km**  
of ditches



**971**  
culverts



**6,293**  
catch basins



**6**  
stormwater  
pump stations



**4,304**  
maintenance holes



**34**  
ponds and wetlands

## Stormwater maintenance since 2022



Renewed outfall



Crews working to renew a pond



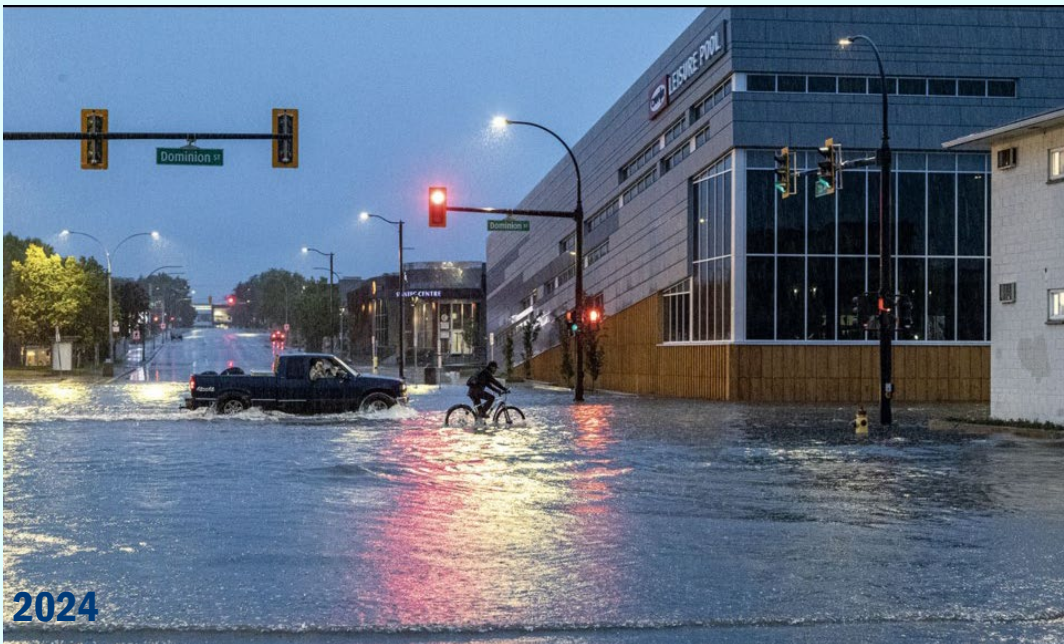
Renewed catch basin

- **2.3 km** of new gravity main lining installed
- **8** outfalls renewed
- **16** ponds renewed
- **53** catch basins renewed
- **7 km** of pipe inspected by camera



2018

Source: My Prince George Now



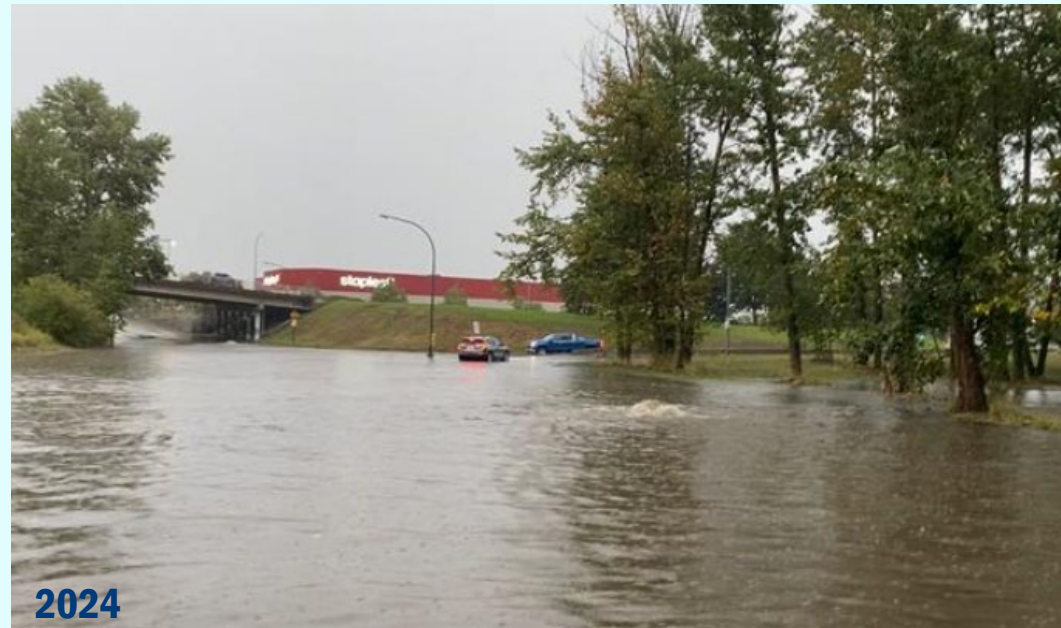
2024

Credit: Chuck Nisbett/The Prince George Citizen August 2024

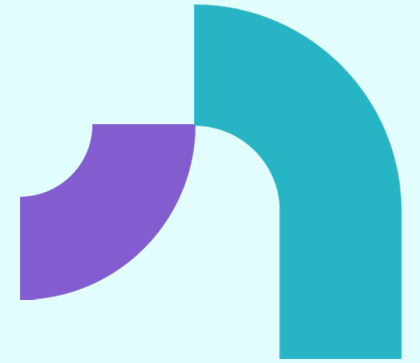
# Consequences



2020

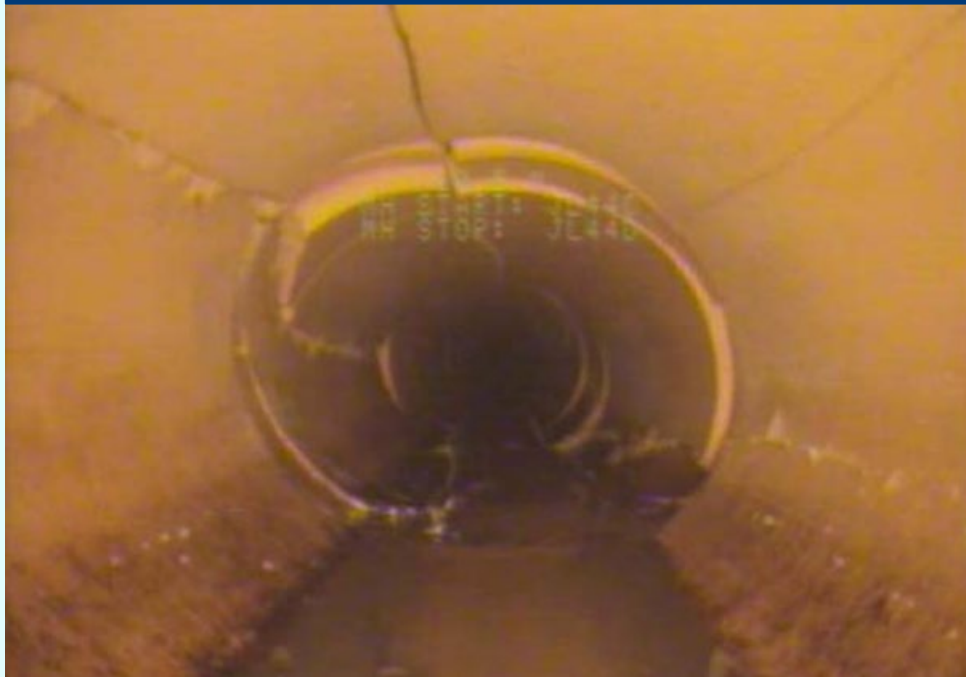


2024





**INFRASTRUCTURE FAILURES**



**SINKHOLES**



# Consequences

# Survey Results





# Proposed Funding Options

## Option one: Dedicated tax levy

- An annual fee in your property tax each year. The rate is calculated based on property assessment values in the same way that property taxes are calculated.

## Option two: Tiered flat rate

- Based on the type of property (residential, business, etc.) and tiered by property size, a flat fee would be charged on your utility bill.

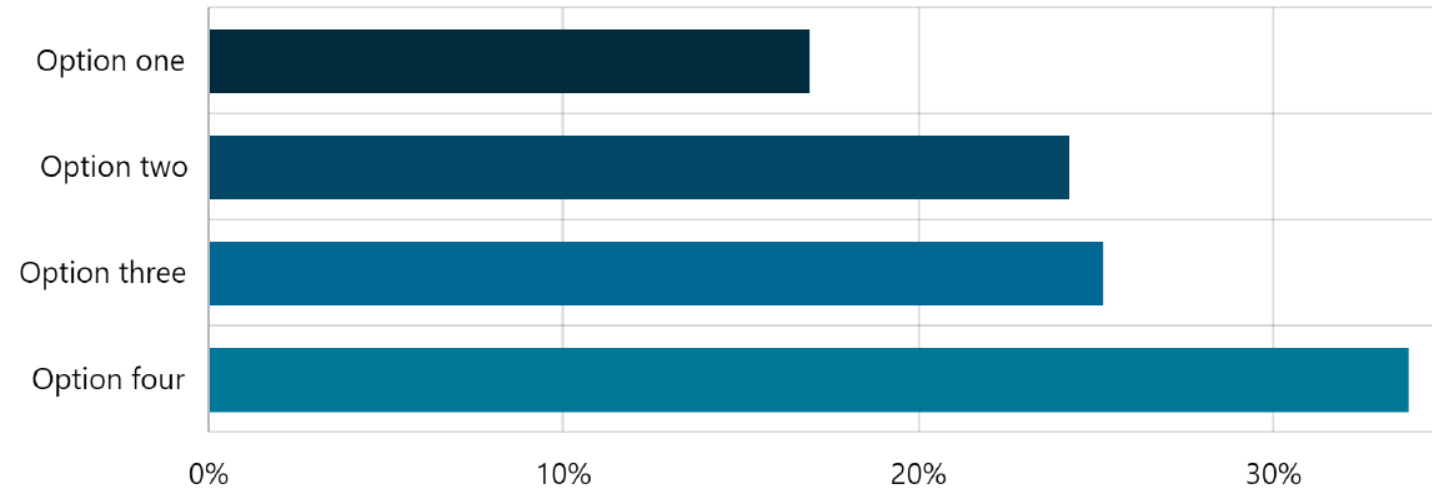
## Option three: Equivalent residential unit (ERU) – zoning maximums

- Based on the zoning of your property, a formula will be developed to determine how much your property is contributing to the stormwater system. This is calculated by using the zoning's maximum site coverage to determine the amount of allowed hard surface on your property.

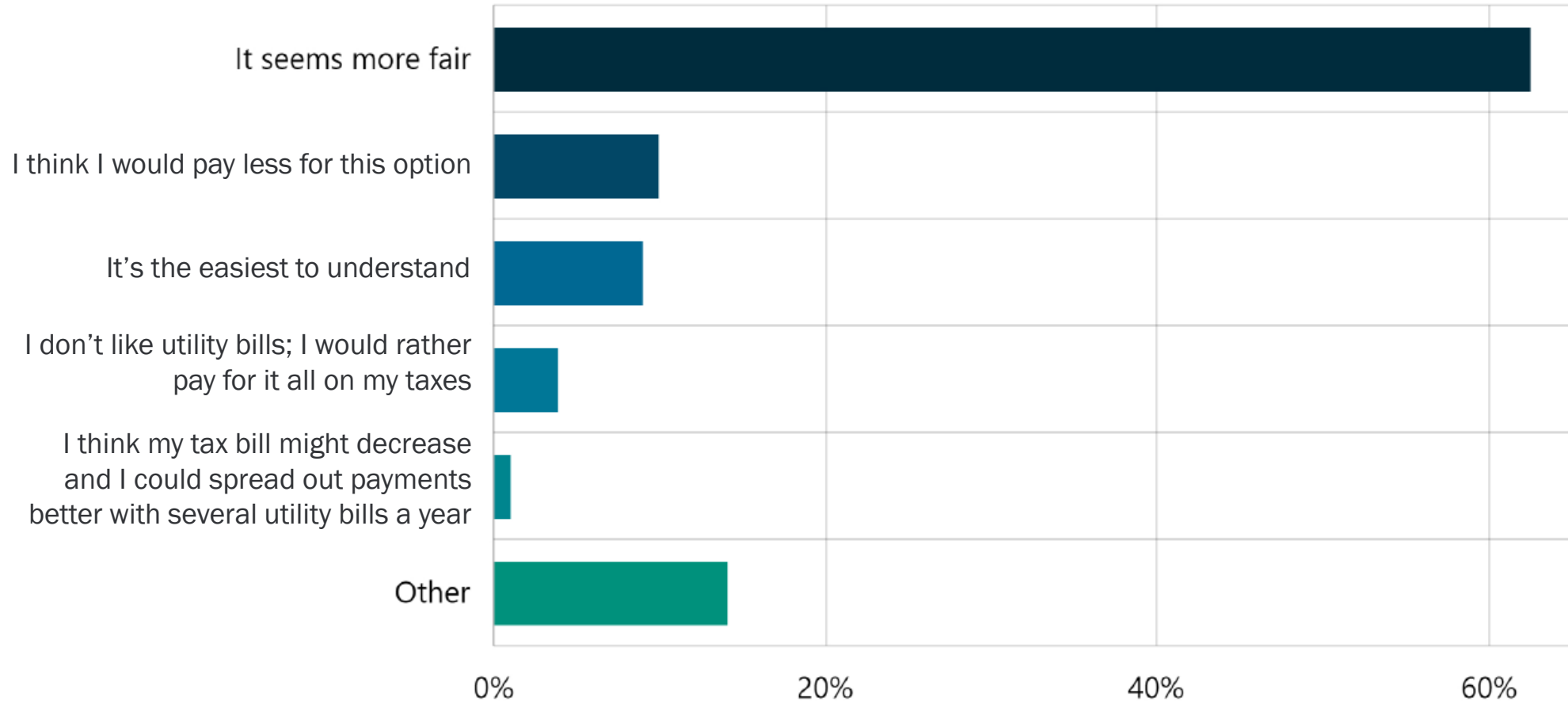
## Option four: Equivalent residential unit (ERU) – statistical sampling

- Similar to option three, but based on the actual measured hard surface area in a sampling of all types of residential properties.

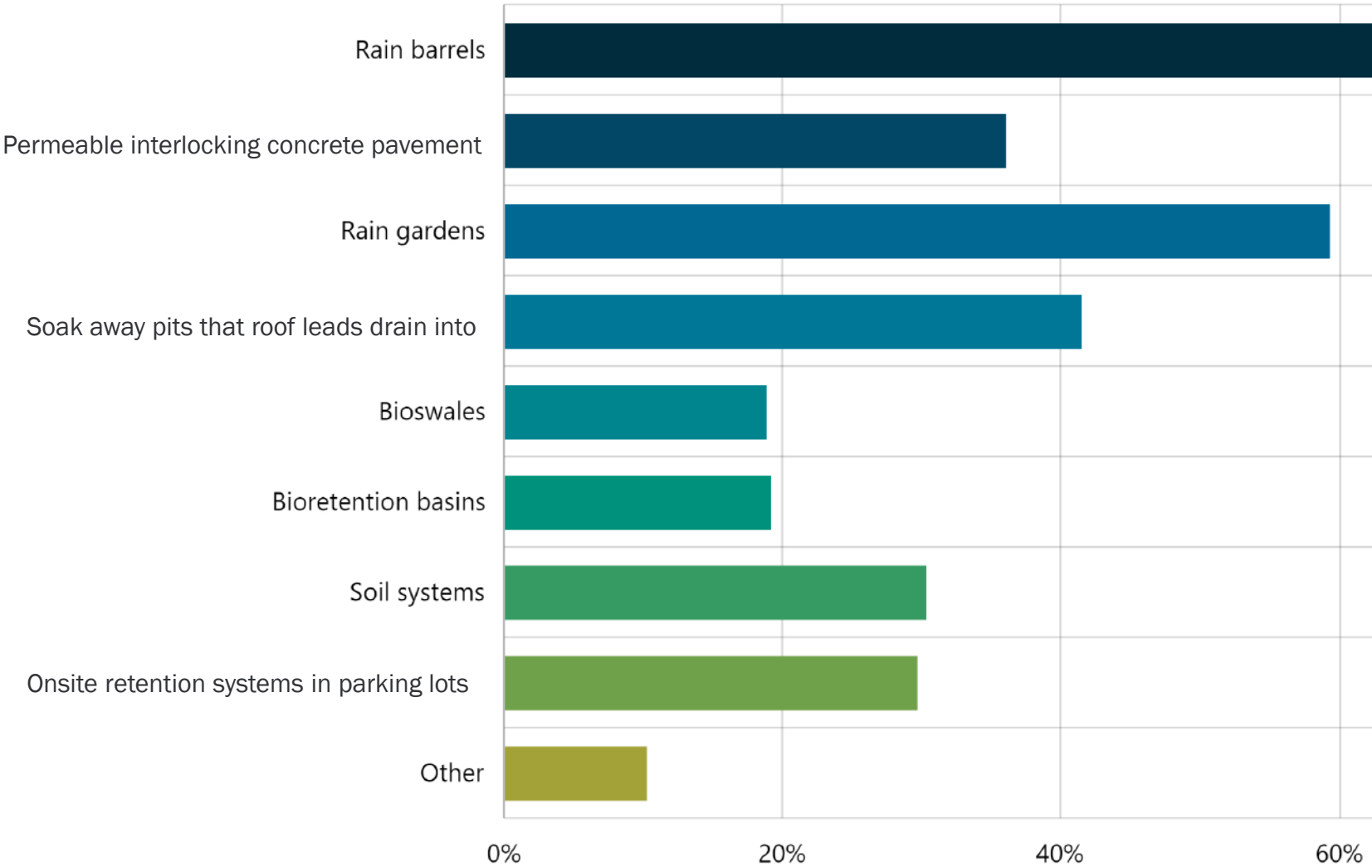
314 Survey responses



# Why Did You Chose that Option?



# Incentives

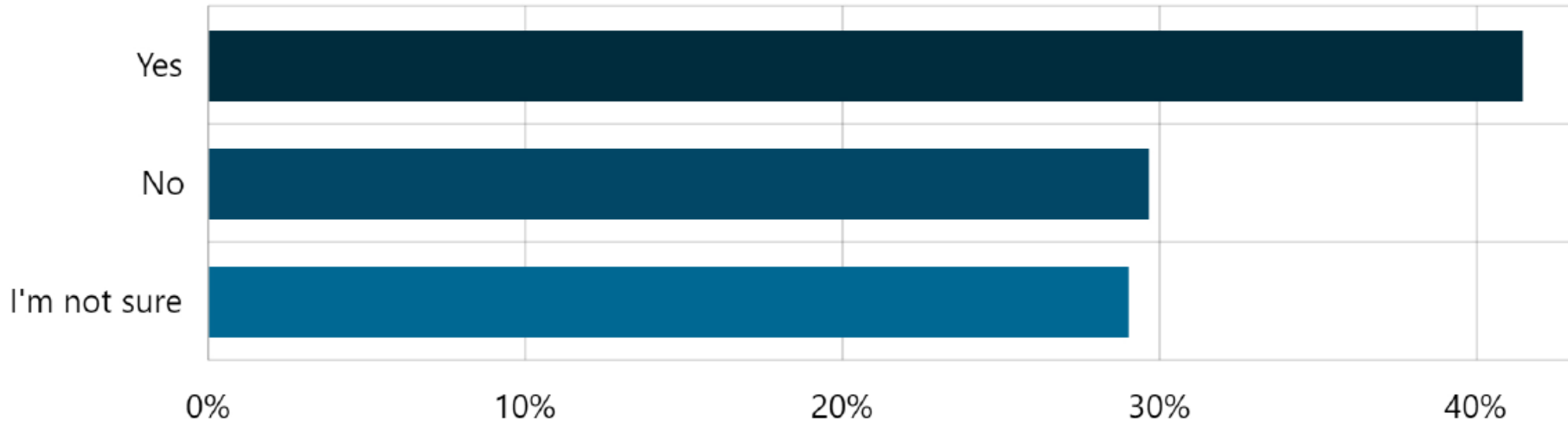


**Soak Away Pit**



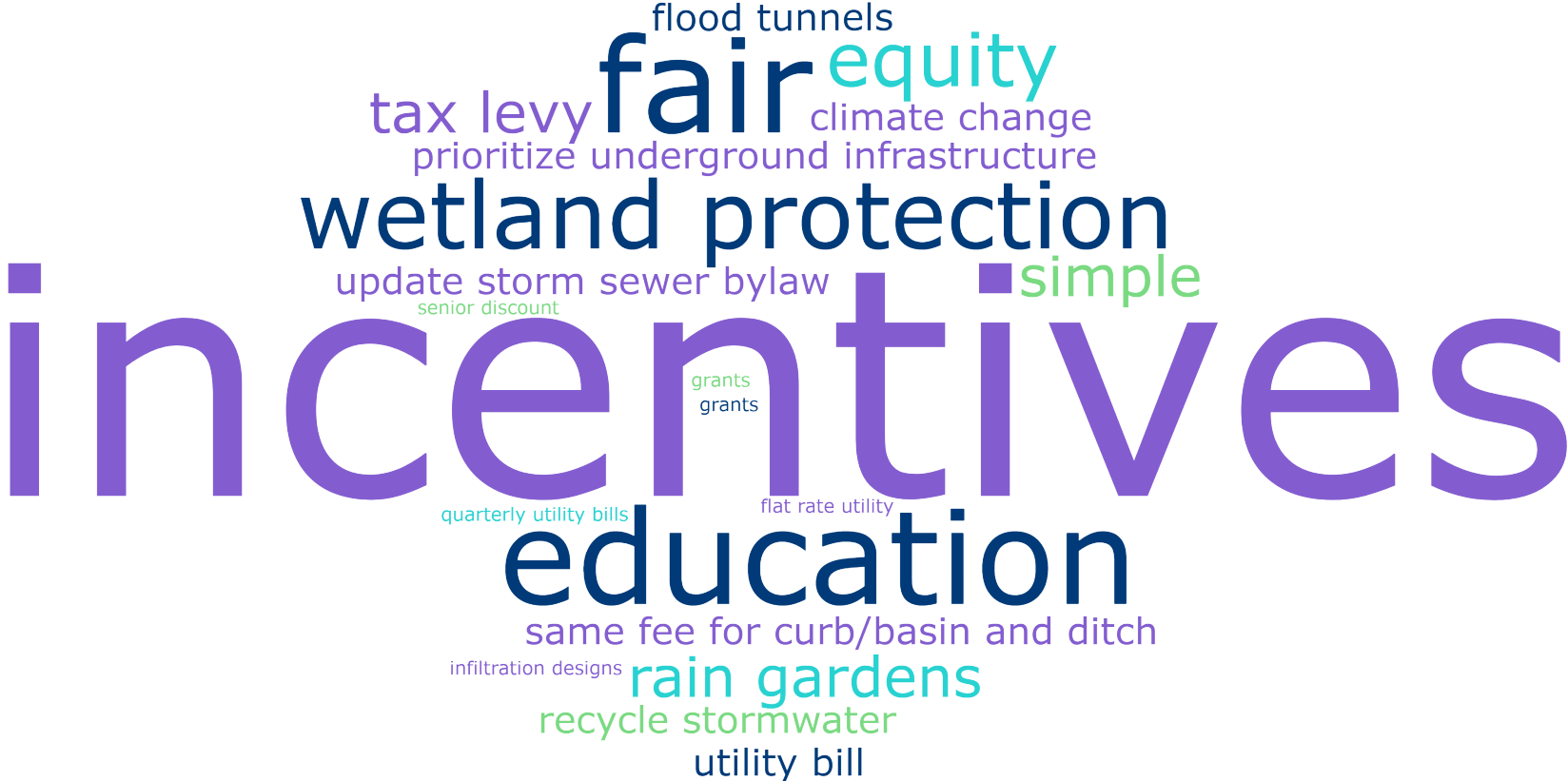
**Rain Gardens**

# Fee Variation Based on Level of Service *(Ditch vs. Curb & Gutter)*

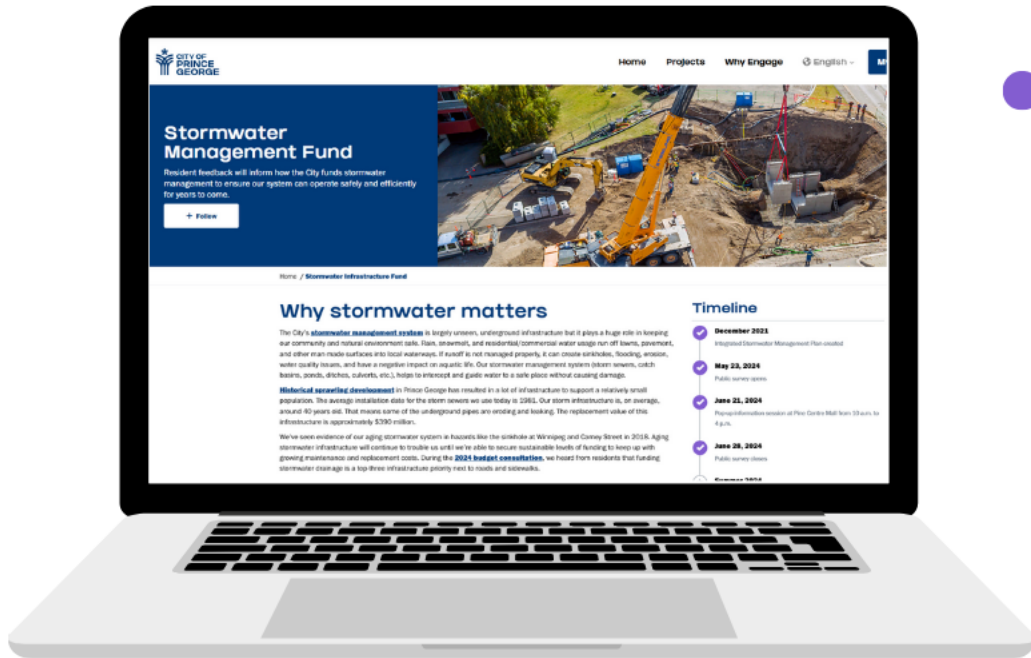


# What We Heard

## Sentiment



# What's next?



## ● [getinvolved.princegeorge.ca/stormwater](https://getinvolved.princegeorge.ca/stormwater)

The webpage includes project updates, information on the four funding options, links to the Integrated Stormwater Management Plan and its updates, and links to informational stormwater posters.

Our community can still provide input by emailing:

[getinvolved@princegeorge.ca](mailto:getinvolved@princegeorge.ca).

# What's next?

- Decide which option:

**Option 1:** create a dedicated levy on property taxes,

**Option 2:** create a utility fee based on property type and tiered by size,

**Option 3:** create a utility fee based on the zoning's maximum site coverage to determine the amount of allowed hard surface on a property,

**Option 4:** create a utility fee based on the actual measurement of the hard surface area in a sampling of all types of residential properties,

**Option 5:** do not create a dedicated fund and continue to include stormwater related expenses within the general tax levy, where it will need to compete with other City service categories.

# Thank you

