



Prince George Arts Funding

September 25, 2024

Ken Hall, Marnie Hamagami, Sue Judge, Eli Klasner

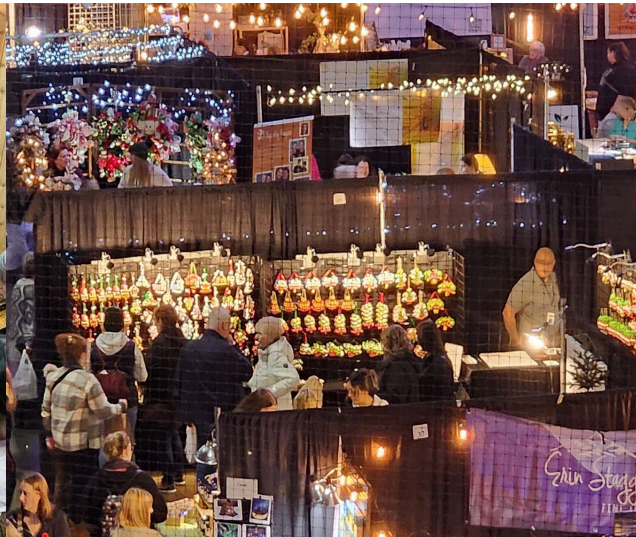
"Big Four" Prince George Arts Organizations

Community Arts Council - **1968**

Prince George Symphony Orchestra – **1972**

Theatre NorthWest - **1994**

Prince George Folkfest Society - **2003**



*Combined **159** years of service to the community*

Leadership

Ken Hall

Executive Director

Prince George Symphony
Orchestra

Marnie Hamagami

Artistic Producer

Theatre Northwest

Sue Judge

Executive Director

Prince George
Folkfest Society

Eli Klasner

Executive Director

Prince George Community
Arts Council



All four of our organizations are honoured to operate on the unceded, traditional lands of the Lheidli T'enneh First Nation.

Why seek a funding increase?

Per Capita Spending on the Arts in Canada:

Canada Average: \$25

BC Average: \$25

Kelowna: \$44

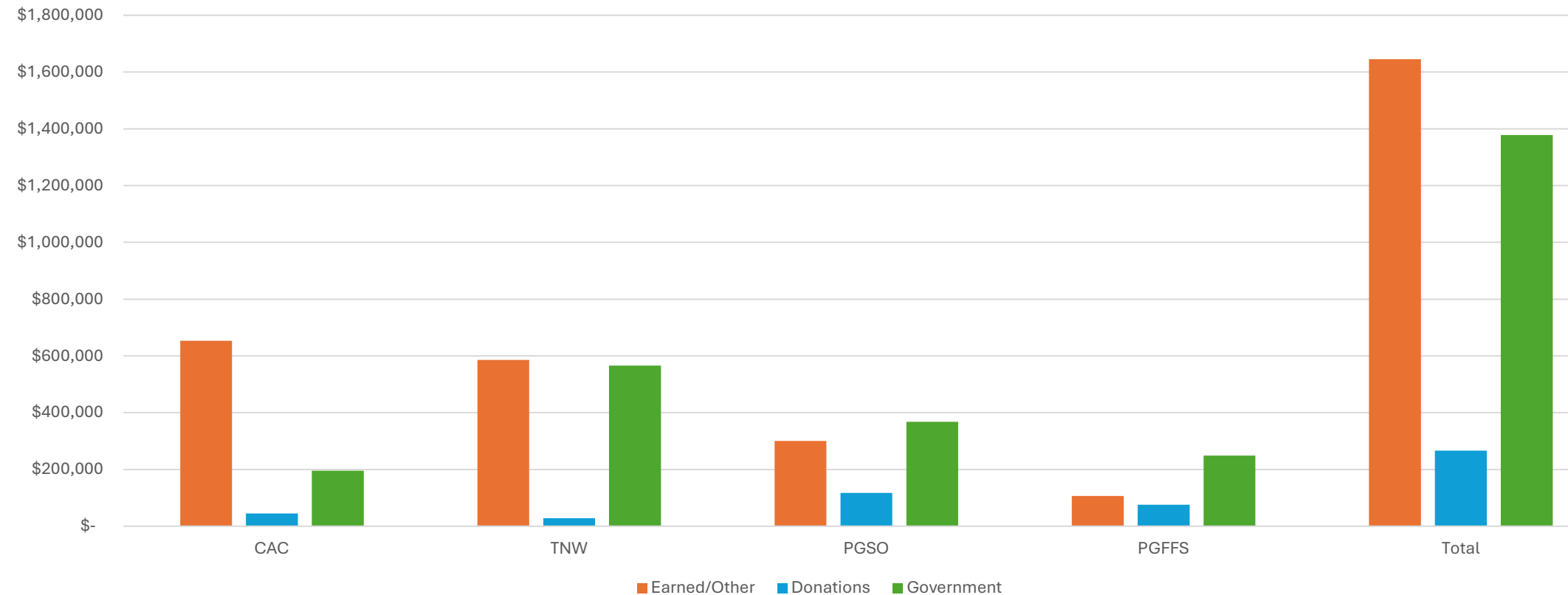
Kamloops: \$80

Currently, the City of Prince George spends \$7 per capita.



Sources of operating money were collectively:

Funding Sources - 2024

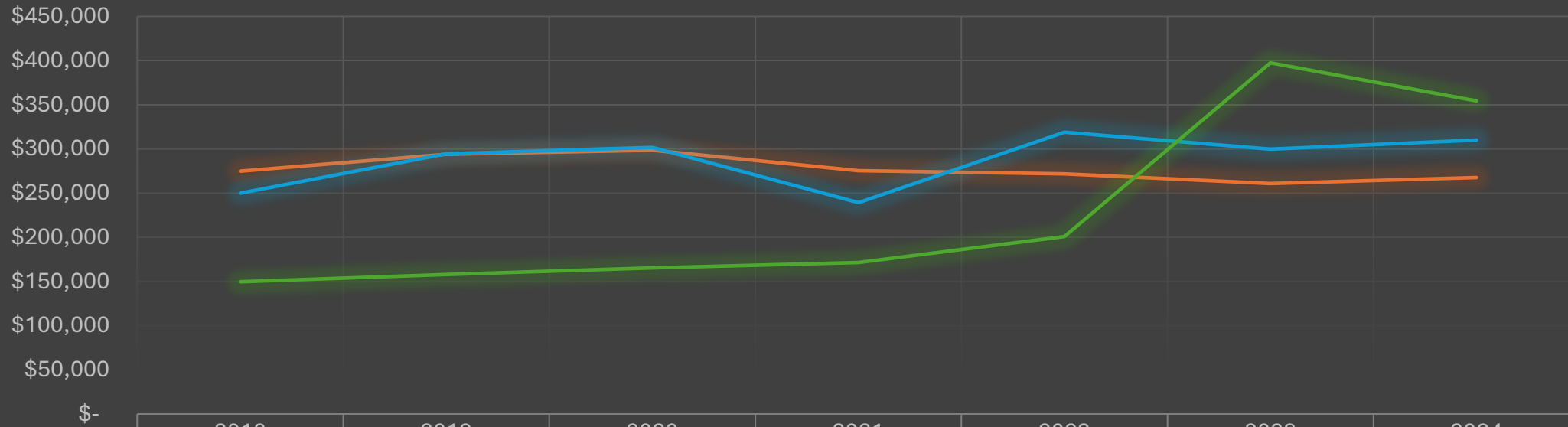


50% earned revenue | 42% government 8% private donations



Collective arts operating funding adjusted for inflation

— City — Province — Federal



	2018	2019	2020	2021	2022	2023	2024
City	\$274,877	\$293,942	\$298,570	\$275,461	\$271,737	\$260,833	\$267,528
Province	\$249,849	\$294,498	\$301,637	\$239,211	\$318,911	\$299,900	\$310,160
Federal	\$149,639	\$157,929	\$165,263	\$171,435	\$200,748	\$397,417	\$354,276



Combined operating assistance for PGSO, CAC, PGFFS and TNW over the past seven years

Volunteers



Current Board Members

Kirsten Andersen
Elizabeth Eakin
Jeff Elder
Rev. Bob Fillier
Andrea Gorrell
Glen Goudy
Lorrelle Hall
Jonita Hayer
Karen Heathman

Meagan Howard-Gibbon
Philomena Hughes
Aidyl Jago
Margaret Jones-Bricker
Satinder Klair
Leah Lampert
Diane Levesque
Sheila Littler

Elizabeth MacRitchie
Dr. Donald MacRitchie
Cliff Mann
Matt McMath
Elissa Meiklem
John Ortynsky
Andrea Palmer
Chris Peter

Greg Petrisor
Dr. Marian Roesch
Valerie Schmitz
Travis Stringer
Christine Sullivan
Les Waldie
Rob Watt
Dwight Wolfe

Nearly 350 volunteers provided over 20,000 hours each year

Corporate Partners

101.3 The River	Concept Design	Gold Business Technologies	Mad Loon Entertainment	Prince George Citizen	Spice of Life Indian Cuisine
99.3 Rewind	Crow & Associates Raymond James	Grama's Inn	Marathon Eavestroughing Ltd	Prince George Community Foundation	The Canadian Brewhouse
All-West Glass	Culligan Water	HDFX	Marcotte Law	Prince George Public Library	The Coast Prince George Hotel
Borealis Massage Therapy Clinic	Deadfall Brewing	HUB International	Nancy Os	Princess Flowers	The Prince George Legion
Canadian Tire	DEFAU Network Systems Corp.	Integris Credit Union	Noratek Solutions Inc.	Pulp City Music	Timberline Footfitters
CanaSteel Rebar Services	Dick Byl Law	IREN	North 54	Ramada	Top Drawer Yarn Studio
Capabilities	Downtown PG	Judy Russell's Enchainment Dance Centre	Novak Family Foundation	Raymond James - Gordon Plewes	Tourism PG
Carrier Lumber	Dr. Terrance C. Warawa	Knox Performance Centre	NST Charter Bus Services	RBC Emerging Artists	Twisted Cork
Central Builders	Dulux Paint	KPMG	Omineca Arts Centre	RDFFG	UNBC
CFIS 93.1 FM	Edge Orthotics	Le Cercle Canadiens Francais de Prince George	P.S. Pianos	Rolling Mix Concrete (B.C.) Ltd.	Universal Arc Repair Inc
CFUR Radio 88.7FM	EDI Environmental Dynamics Inc	Lheidli T'enneh First Nation	Pacific Western Brewing	Russell AV	VENDO Media
Chinook Scaffold Systems Prince George	Elstad Contracting Ltd	Linda Rempel - Chambers Plan	Papyrus Printing	Shogun Japanese Steakhouse	Vista Radio
CKPG TV	Enterprise Rent-a-Car	Liquor Warehouse	Pattison Media	Sonja Redden - Healing Rivers Physiotherapy	Winston's Resto-Bar
CKPGToday.ca	Excalibur Theatre School	Long & McQuade	PG Citizen	Sound Factory	Wood Wheaton Supercentre
CNC	Frost Films	Long and McQuade	Philomena Hughes Photography	Speedee Printing	

Return on Investment

Increase staff cohort to better support community coordination, engagement, accessibility

Increased number of arts and cultural events and programs

Much higher profile for PG regionally, provincially, nationally

Improved attractiveness of PG as a travel destination and place of residence, with strong economic return



Questions & Answers

