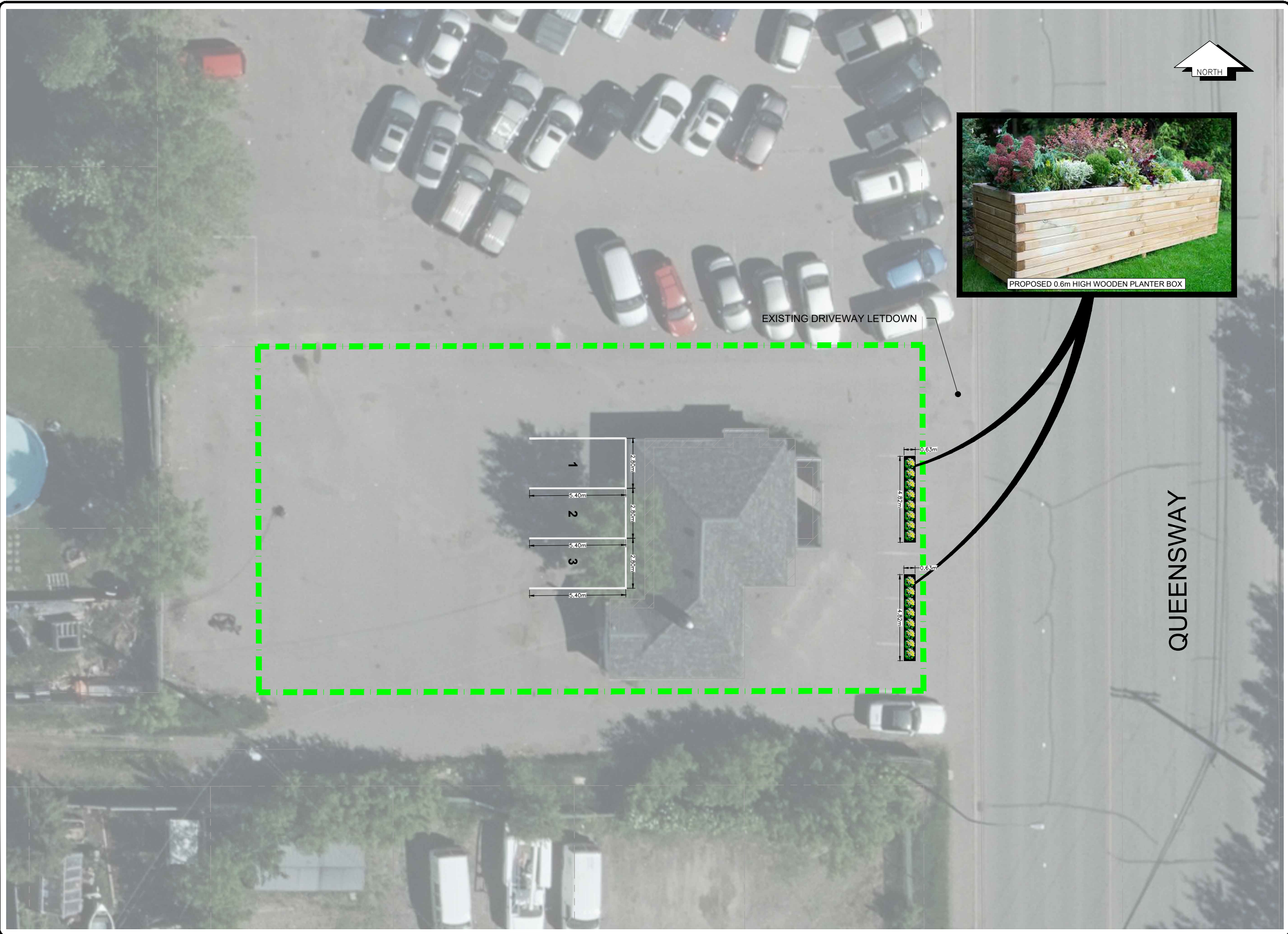


C:\Users\lucy\1493-06 SPD Enterprise Ltd\08 - 2679 Queensway Servicing Road & Traffic Analysis\03 - Design\03 - CAD Files\1493-06 BSE.dwg



LEGEND

- EX. LEGAL LINE
- SUBJECT PROPERTY BOUNDARY

PARKING CALCULATION FOR REQUIRED PARKING STALLS:
 2.2 STALLS PER 100m² GFA OF OFFICE SPACE
 2.2 STALLS / 100m² x 120m² LAND = 2.64 = 3
 TOTAL NUMBER OF REQUIRED STALLS = 3 STALLS

NO.	DATE (D/M/Y)	REVISION	BY

NOT FOR CONSTRUCTION



CONSULTANTS PROJECT No.:	1493-06
DRAWN:	NLW
CHECKED:	JRB
ENGINEER:	JRB
DATE:	21/03/2024
SCALES:	HORZ. 1:100
SCALES:	VERT. 1:100

SPD ENTERPRISE LTD.
 2679 QUEENSWAY
 PRINCE GEORGE, BC

CONCEPTUAL PARKING
 AND LANDSCAPE PLAN

DRAWING No.
001

