

# The Importance of a Greenspace Bylaw

- ENVS 230 Class Project

- Elias Beach, Christy Blackburne, Zach Byrne, Deborah Chilanga, Colin Engstrom, Mary Ann Gabriel Khare, Elisa Giesbrecht, Nick Holmes, Payton Holyk, Arion Lander, Kiara Mills, Caleb Mueller, Sorrel Oberg, Terrell Peters, Olga Pickard, Rika Rao, Luthien Thielmann, Kei Laam Yiu

# Greenespace Preservation and Reintroduction

- Greenspaces like Paddlewheel Park, Cottonwood Island Park, and the Heritage River Trail are important and we must preserve them.
  - **These parks keep us connected to nature and offer mental health benefits to the entire population of Prince George.**
- Flooding in Prince George is unavoidable due to its proximity to the Fraser and Nechako Rivers.
  - **The presence and preservation of these greenspaces decrease the amount of damage caused to infrastructure and housing by these yearly floods.**
- Temperatures in Prince George have been rising steadily over the years, and the presence of greenspaces are instrumental in combating this issue.
  - **Implementing greenspaces in urban areas drops the overall temperature of said areas and creates spaces that will attract citizens and boost the local economy, while also reducing the fire risk.**
- Greenspace areas are rapidly decreasing to make room for new developments
  - **However, there are many ways that these spaces can be preserved during development or reintroduced once development has finished.**

## OBJECTIVE



To propose a municipal bylaw for Ginter's meadow that protects irreplaceable old growth forest habitat and riparian areas. This was accomplished through:

1

Comparison with and recognition of the efforts of other Canadian municipalities

2

Detailed ecological and land use assessment of Ginter's Meadow

3

Analyzing housing and commercial interests in the city of Prince George

## RECOMMENDATIONS



Modify existing development proposals to protect proposals to protect riparian zones, sensitive areas zones, sensitive areas and old growth growth

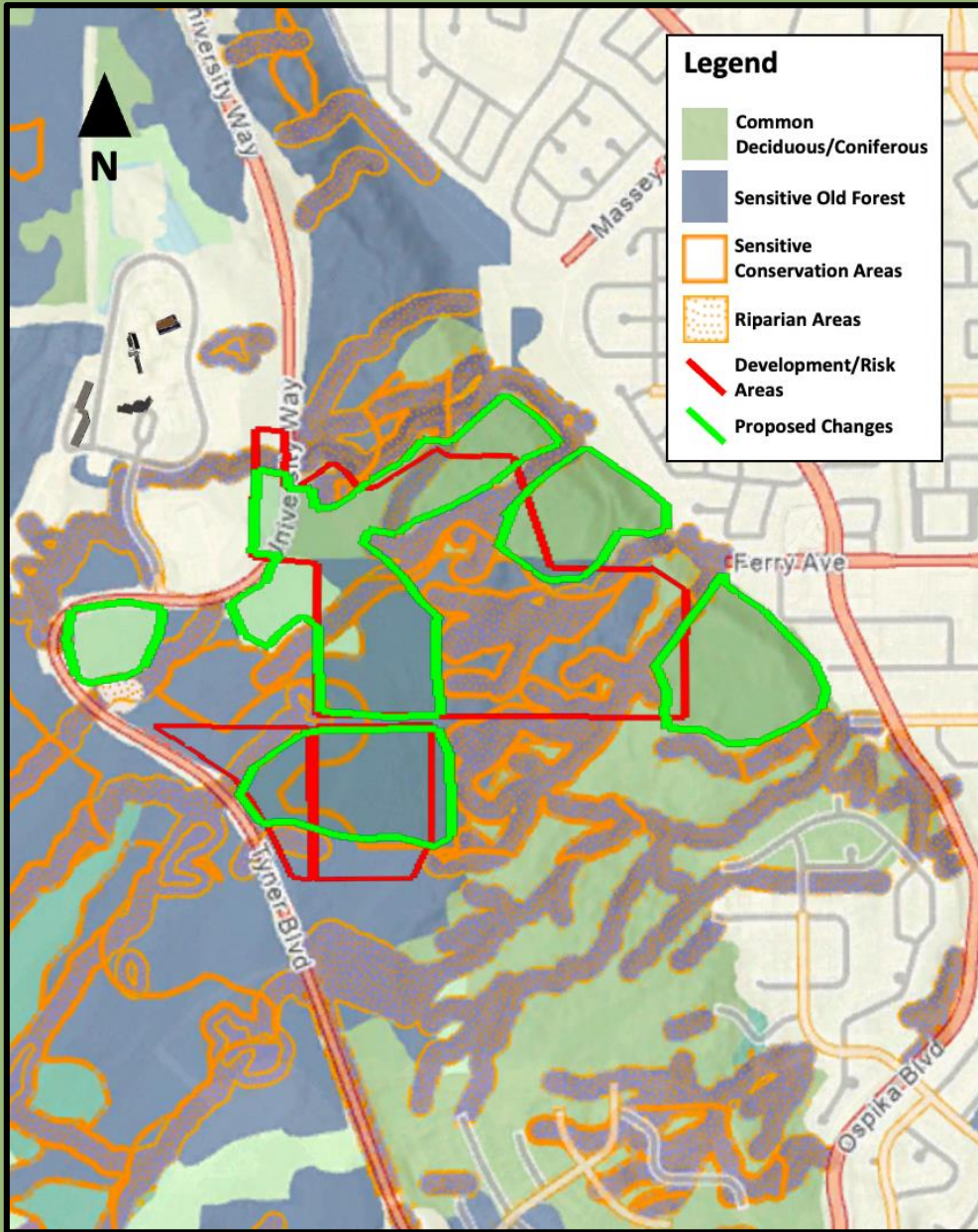
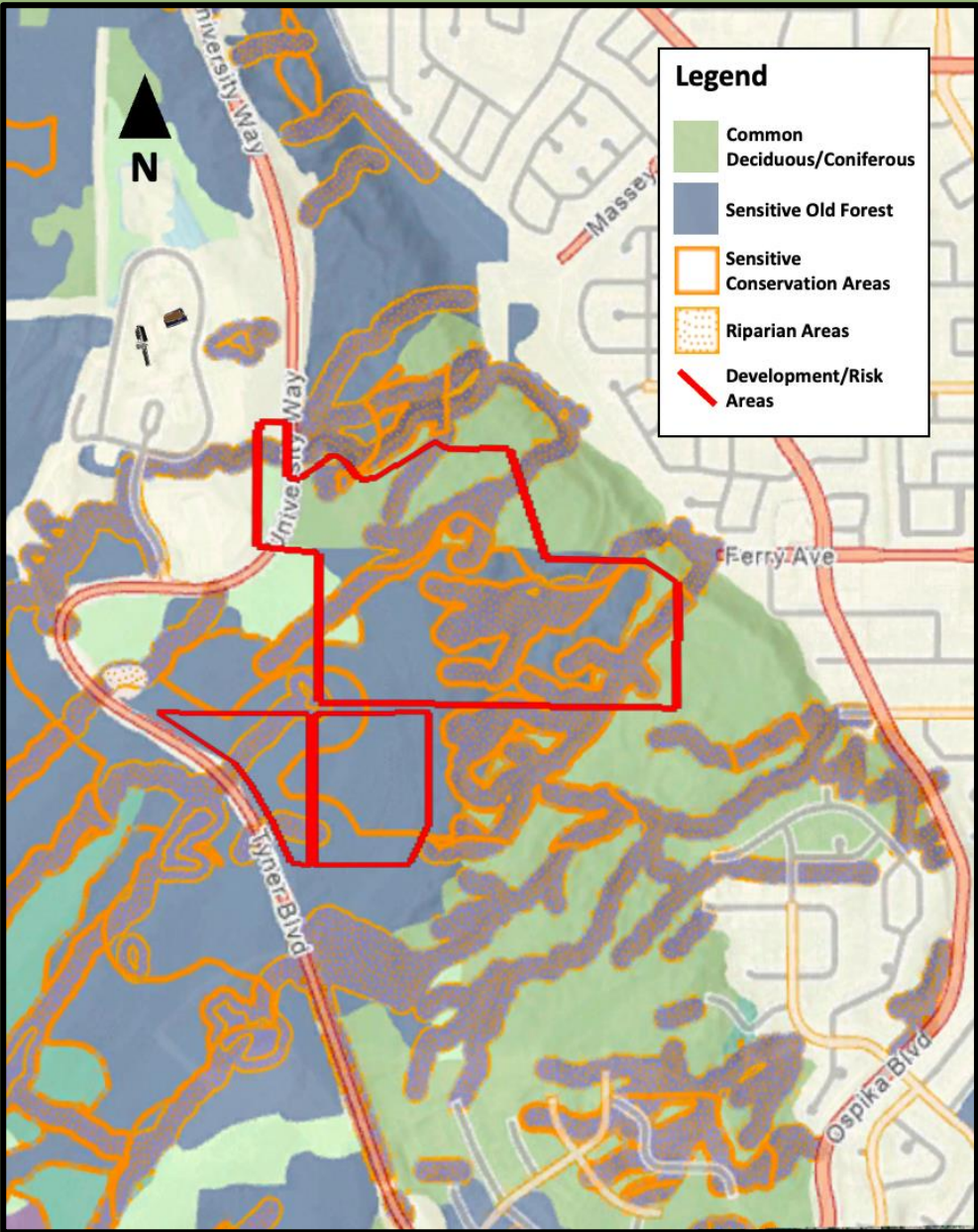


Permanent preservation of community forest area community forest area



Identify areas within the city that can be infilled to can be infilled to prevent further development development

# PROPOSED DEVELOPMENT CHANGES



# Native Plant Parks that Support Local Biodiversity and Pollinators

**Policy:** PG's parks should be planted with a focus toward native species.

**Course of action:** Have ornamental plants continually replaced with native plant species as they die, either annually or through their natural life cycle.

- We have identified 25 native species that would serve the exact benefits we have mentioned below (i.e. Prickly rose, Bluejoint and Paper birch).

## **Benefits:**

- Planting native flora creates more opportunities for native fauna to flourish & protects the biodiversity of the area
- The presence of native plants within a community gives an opportunity to mitigate effects of climate change
- Education can benefit the community, such as enhancing social development, increased ability for creative thought and allowing children to connect their physical and mental health to nature.

## **Examples:**

- Cities such as Vancouver, Victoria, and Toronto have implemented native plant species policies in their parks and development.

Elisa Giesbrecht, Elias Beach, Maryann Gabriel, Kei Laam Yiu, Kiara Mills

# HARVESTING CHANGE

## Prince George's Path to Protecting Greenspace

- Introduce mandatory composting across Prince George
- **Compost in relation to greenspace**
  - o Reduces erosion rates and saves space in landfills.
  - o Provides nutrients to soil for plant growth and greenspace development.
- **Other Green Cities in BC**
  - o Municipal bylaws mandate composting for commercial and residential units.
  - o "Green Bin" collection of yard waste and food scraps.
- **Recommendations**
  - o Implement our own "Green bins" to collect organic waste.
  - o Sell large-scale composting products to offset collection costs.



# Density Bonusing

A tool for municipalities to help make already built neighbourhoods more vibrant and livable.

Incentive for developers to utilize spaces suitable for infill in exchange for amenities.

- Focused on downtown core and transit supported corridors (ie. 15th and 5th) as per introduced provincial legislation
- Amenities could include, 'green' developments, arts/cultural spaces, grocery stores, mixed use housing etc.



**Thank  
you!**

