

CITY OF PRINCE GEORGE
BYLAW NO. 9056, 2019

A Bylaw of the City of Prince George to permanently close a portion of road located near 1357 PG Pulpmill Road to remove its highway dedication for the purpose of future disposal of the lands.

WHEREAS the Council of the City of Prince George deems it desirable that an approximate 0.50 hectares of road dedicated on Plan 14534, District Lot 823, Cariboo District, as shown on Reference Plan EPP95003, be closed to traffic, and that the highway dedication thereof be removed;

AND WHEREAS, in accordance with section 40 of the *Community Charter*, notice of intention to adopt this bylaw has been delivered, posted and published, and an opportunity has been provided for persons who consider they are affected by this bylaw to make representations to Council;

NOW THEREFORE the Council of the City of Prince George, in open meeting assembled, **ENACTS AS FOLLOWS:**

1. That the portion of road shown dedicated on Plan 14534, District Lot 823, Cariboo District, as shown outlined in bold black on Reference Plan EPP95003, attached hereto as Appendix "A" and forming part of this Bylaw, is closed to traffic.
2. That the dedication of the portion of road dedicated by Plan 14534, District Lot 823, Cariboo District, as shown outlined in bold black on Reference Plan EPP95003, attached hereto as Appendix "A" and forming part of this Bylaw, is removed.
3. The Mayor and Corporate Officer are hereby empowered to do all things necessary to give effect to this Bylaw.
4. This Bylaw shall come into full force and take effect upon its adoption and shall be filed with the Registrar of the applicable Land Title Office.
5. This Bylaw may be cited for all purposes as "City of Prince George 1357 PG Pulpmill Road, Road Closure Bylaw No. 9056, 2019".

READ A FIRST TIME THIS **23RD** DAY OF **OCTOBER** , 2019.

READ A SECOND TIME THIS **23RD** DAY OF **OCTOBER** , 2019.

First two readings passed by a **UNANIMOUS** decision of Members of City Council present and eligible to vote.

READ A THIRD TIME THIS **18TH** DAY OF **NOVEMBER** , 2019.

Third reading passed by a **UNANIMOUS** decision of Members of City Council present and eligible to vote.

ADOPTED THIS DAY OF , 2019, BY A
DECISION OF ALL MEMBERS OF CITY COUNCIL PRESENT AND
ELIGIBLE TO VOTE.

MAYOR

CORPORATE OFFICER

APPENDIX A

REFERENCE PLAN TO ACCOMPANY BY-LAW NUMBER 9056 (PRINCE GEORGE) TO CLOSE A PORTION OF ROAD SHOWN DEDICATED ON PLAN 14534, DISTRICT LOT 823, CARIBOO DISTRICT.

PLAN EPP95003

PURSUANT TO SECTION 120 OF THE LAND TITLE ACT AND SECTION 40 OF THE COMMUNITY CHARTER

THIS PLAN LIES WITHIN INTEGRATED SURVEY AREA
No. 39 PRINCE GEORGE, BC, NAD83 (CSRS) 4.0.0.BC.1

BCGS 93G.087

THE INTENDED PLOT SIZE OF THIS PLAN IS 590mm IN WIDTH BY 432mm IN
HEIGHT (C SIZE) WHEN PLOTTED AT A SCALE OF 1:1250.

ALL DISTANCES ARE IN METRES AND DECIMALS THEREOF.

GRID BEARINGS ARE DERIVED FROM OBSERVATIONS TO GEODETIC CONTROL
MONUMENTS 85H1606 AND 85H1591.

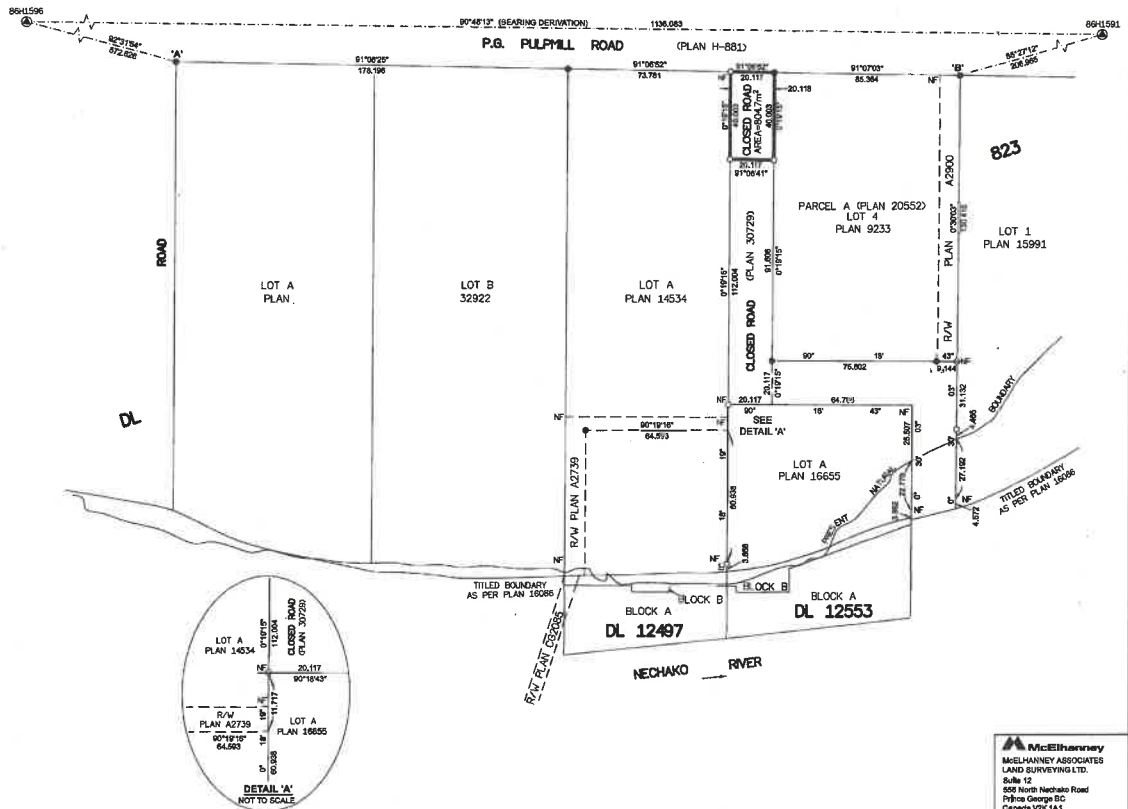
THE UTM COORDINATES AND ESTIMATED ABSOLUTE ACCURACY ACHIEVED
HAVE BEEN DERIVED FROM MAGNETIC PUBLISHED COORDINATES AND
STANDARD DEVIATIONS FOR GEODETIC CONTROL MONUMENT 85H1591.

THIS PLAN SHOWS HORIZONTAL GROUND-LEVEL DISTANCES UNLESS
OTHERWISE SPECIFIED. TO COMPUTE GRID DISTANCES, MULTIPLY
GROUND-LEVEL DISTANCES BY THE COMBINED FACTOR OF 0.9999181 WHICH
HAS BEEN DERIVED FROM GEODETIC CONTROL MONUMENT 85H1591.

LEGEND

| SYMBOLS | DESCRIPTION |
|---------|-----------------------------|
| FOUND | PLACED |
| ④ | CONTROL MONUMENT |
| ○ | STANDARD IRON POST |
| CSF | COMBINED SCALE FACTOR |
| EAA | ESTIMATED ABSOLUTE ACCURACY |

| GEOREFERENCING PORTIONS | | | | |
|-------------------------|------------|-----------|------|-----------|
| STATION | NORTHING | EASTING | EAA | CSF |
| Fd. 1P 'A' | 5975712.40 | 517375.11 | 0.10 | 0.9999181 |
| Fd. 1P 'B' | 5975706.44 | 517376.33 | 0.10 | 0.9999180 |



THIS FIELD SURVEY REPRESENTED BY THIS PLAN WAS COMPLETED
ON THE 15th DAY OF AUGUST, 2019
SHAUNA C. OERTZEN, BCLS 796

THIS PLAN LIES WITHIN THE REGIONAL DISTRICT OF FRASER-FORT GEORGE.

McElhenny
McELHENNY ASSOCIATES
LAND SURVEYING LTD.
Suite 12
550 North Nechako Road
Prince George BC
Canada V2K 1A1
Tel: 250 561 2229
File No. 2241-5714-RC