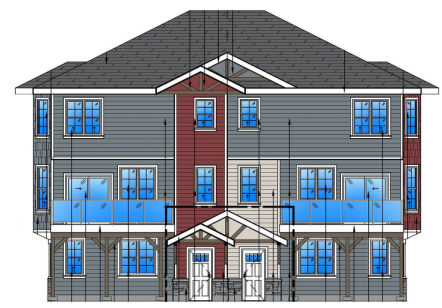


Vary Sections 10.11.5 3. & 10.11.5 4. of City of Prince George Zoning Bylaw No. 7850, 2007 as follows:
a) increase the maximum height for two-unit housing from 10.0 m to 11.8 m.
b) increase the maximum number of storeys for two-unit housing from 2.5 to 3.



SOUTH ELEVATION - BUILDING 1 (2 UNITS)
SCALE 1:150



NORTH ELEVATION - BUILDING 1 (2 UNITS)
SCALE 1:150



SIDE ELEVATION - BUILDING 1
SCALE 1:150

