

Vary Section 9.2.6 2. of the City of Prince George Zoning Bylaw No. 7850, 2007 as follows:
b) Increase the maximum height for carriage housing from 7.0 m to 9.0 m.

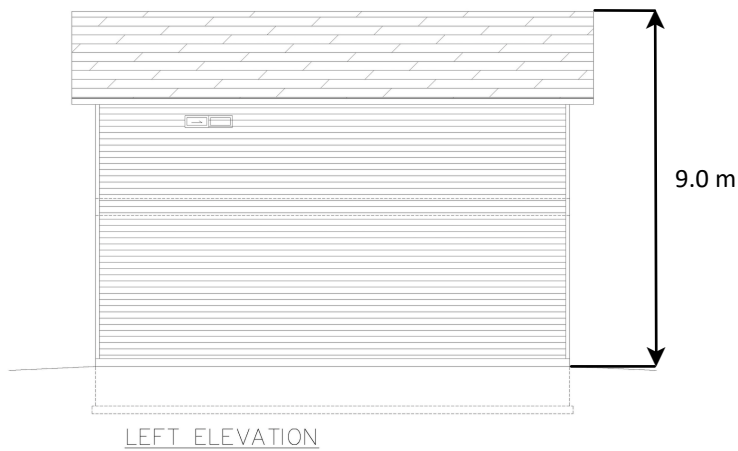
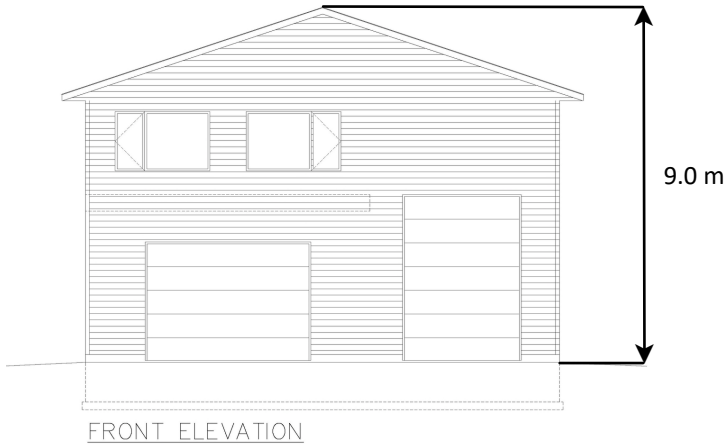


Exhibit "B" to VP100656

East 1/2 of the South East 1/4, DL 4031, CD, Except Plans 34340 and PGP38106

