

**CITY OF PRINCE GEORGE**  
**BYLAW NO. 9056, 2019**

A Bylaw of the City of Prince George to permanently close a portion of road located near 1357 PG Pulpmill Road to remove its highway dedication for the purpose of future disposal of the lands.

**WHEREAS** the Council of the City of Prince George deems it desirable that an approximate 0.50 hectares of road dedicated on Plan 14534, District Lot 823, Cariboo District, as shown on Reference Plan EPP95003, be closed to traffic, and that the highway dedication thereof be removed;

**AND WHEREAS**, in accordance with section 40 of the *Community Charter*, notice of intention to adopt this bylaw has been delivered, posted and published, and an opportunity has been provided for persons who consider they are affected by this bylaw to make representations to Council;

**NOW THEREFORE** the Council of the City of Prince George, in open meeting assembled, **ENACTS AS FOLLOWS:**

1. That the portion of road shown dedicated on Plan 14534, District Lot 823, Cariboo District, as shown outlined in bold black on Reference Plan EPP95003, attached hereto as Appendix "A" and forming part of this Bylaw, is closed to traffic.
2. That the dedication of the portion of road dedicated by Plan 14534, District Lot 823, Cariboo District, as shown outlined in bold black on Reference Plan EPP95003, attached hereto as Appendix "A" and forming part of this Bylaw, is removed.
3. The Mayor and Corporate Officer are hereby empowered to do all things necessary to give effect to this Bylaw.
4. This Bylaw shall come into full force and take effect upon its adoption and shall be filed with the Registrar of the applicable Land Title Office.
5. This Bylaw may be cited for all purposes as "City of Prince George 1357 PG Pulpmill Road, Road Closure Bylaw No. 9056, 2019".

READ A FIRST TIME THIS                    23<sup>RD</sup>                    DAY OF                    OCTOBER                    , 2019.

READ A SECOND TIME THIS                    23<sup>RD</sup>                    DAY OF                    OCTOBER                    , 2019.

First two readings passed by a    UNANIMOUS    decision of Member of City Council present and eligible to vote.

READ A THIRD TIME THIS                    DAY OF                    , 2019.

Third reading passed by a                    decision of Member of City Council present and eligible to vote.

ADOPTED THIS                    DAY OF                    , 2019, BY A  
DECISION OF ALL MEMBERS OF CITY COUNCIL PRESENT AND  
ELIGIBLE TO VOTE.

---

MAYOR

---

CORPORATE OFFICER

APPENDIX A

**REFERENCE PLAN TO ACCOMPANY BY-LAW NUMBER 9056 (PRINCE GEORGE)  
TO CLOSE A PORTION OF ROAD SHOWN DEDICATED ON PLAN 14534,  
DISTRICT LOT 823, CARIBOO DISTRICT.**

PLAN EPP95003

PURSUANT TO SECTION 120 OF THE LAND TITLE ACT AND SECTION 40 OF THE COMMUNITY CHARTER

THIS PLAN LIES WITHIN INTEGRATED SURVEY AREA  
No. 39 PRINCE GEORGE, BC, NAD83 (CSRS) 4.0.0.BC.1  
BCGS 930.097



THE INTENDED PLOT SIZE OF THIS PLAN IS 600mm IN WIDTH BY 432mm IN HEIGHT (C SIZE) WHEN PLOTTED AT A SCALE OF 1:250.

ALL DISTANCES ARE IN METRES AND DECIMALS THEREOF.

GRID BEARINGS ARE DERIVED FROM OBSERVATIONS TO GEODETTIC CONTROL MONUMENTS 8841596 AND 8841591.

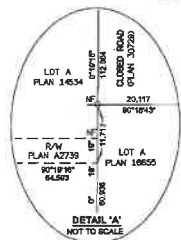
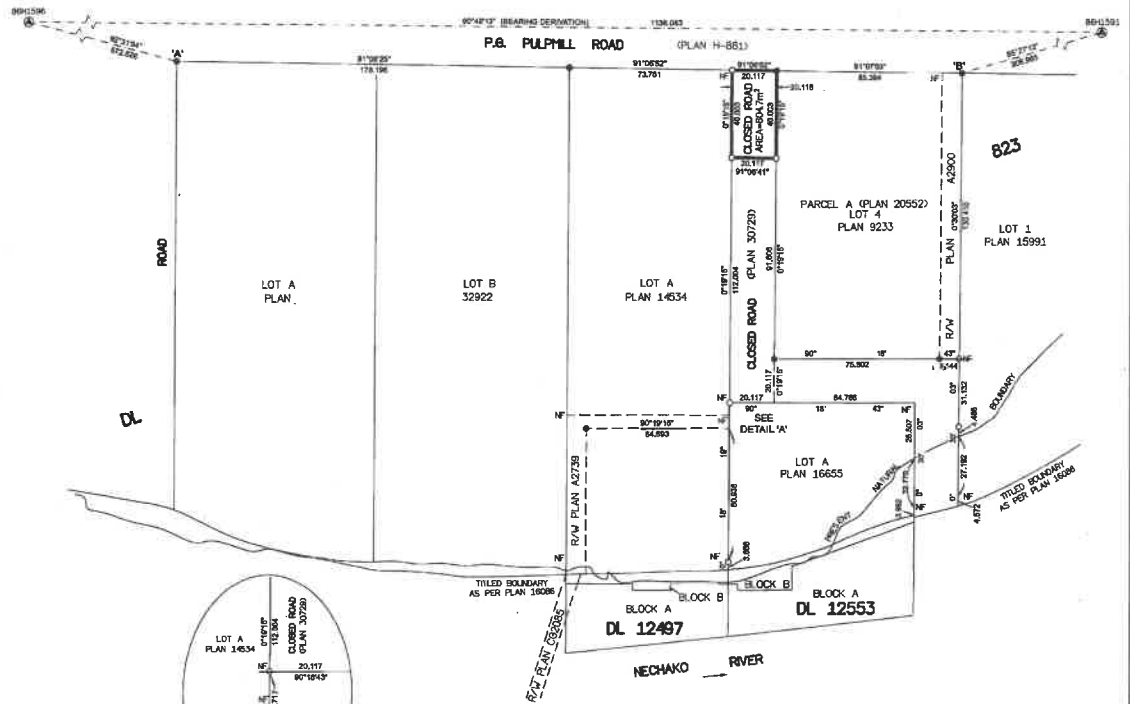
THE UTM COORDINATES AND ESTIMATED ABSOLUTE ACCURACY ACHIEVED HAVE BEEN DERIVED FROM MASCOOT PUBLISHED COORDINATES AND STANDARD DEVIATIONS FOR GEODETTIC CONTROL MONUMENT 8841591.

THIS PLAN SHOWS HORIZONTAL GROUND-LEVEL DISTANCES UNLESS OTHERWISE SPECIFIED. TO COMPUTE GRID DISTANCES, MULTIPLY GROUND-LEVEL DISTANCES BY THE COMBINED FACTOR OF 0.9999188 WHICH HAS BEEN DERIVED FROM GEODETTIC CONTROL MONUMENT 8841591.

**LEGEND**

SYMBOLS	DESCRIPTION
FOUND	PLACED
⊙	CONTROL MONUMENT
○	STANDARD IRON POST
CSF	COMBINED SCALE FACTOR
EAA	ESTIMATED ABSOLUTE ACCURACY

GEOREFERENCING POSITIONS				
UTM COORDINATES, ZONE 18, NAD 83 (CSRS), 4.0.0.BC.1				
STATION	NORTHING	EASTING	EAA	CSF
PL 19 A	5875715.49	617378.11	6.10	0.9999181
PL 19 B	5875705.44	617726.33	6.10	0.9999188



THE FIELD SURVEY REPRESENTED BY THIS PLAN WAS COMPLETED  
ON THE 18th DAY OF AUGUST, 2019  
SHAWN C. GOERTZEN, BCLS 790

THIS PLAN LIES WITHIN THE REGIONAL DISTRICT OF FRASER-FORT GEORGE.

**McElhannay**  
McELHANNAY ASSOCIATES  
LAND SURVEYING LTD.  
Suite 10  
650 North Meacham Road  
Prince George BC  
Canada V2K 1A1  
Tel: 250 591 2229  
File No. 2341-6714462