

Reference Plan to Accompany  
By-law No. 9047,  
(City of Prince George) to close  
portions of Road shown dedicated  
on Plans PGP35583, PGP39051,  
and PGP39049, District Lot 745,  
Cariboo District.

Pursuant to Section 120 of the Land Title Act and Section 40  
of the Community Charter.

Integrated survey area No. 39 Prince George, BC,  
NAD83 (CSRS) 4.0.0.BC.1

BCGS 93G.087



The intended plot size of this plan is 432mm in width by 559mm in height (C size)  
when plotted at a scale of 1:750.

All distances are in metres and decimals thereof.

Grid bearings are derived from observations between geodetic control  
monuments 939447(86H1740) and 294447(86H1733).

The UTM coordinates and estimated horizontal positional accuracy  
achieved have been derived from mascot published coordinates and  
standard deviations for geodetic control monuments 939447(86H1740)  
and 294447(86H1733).

This plan shows horizontal ground-level distances unless otherwise  
specified. To compute grid distances, multiply ground-level distances by  
the average combined factor of 0.9995130 which has been derived from  
control monument 939447(86H1740).

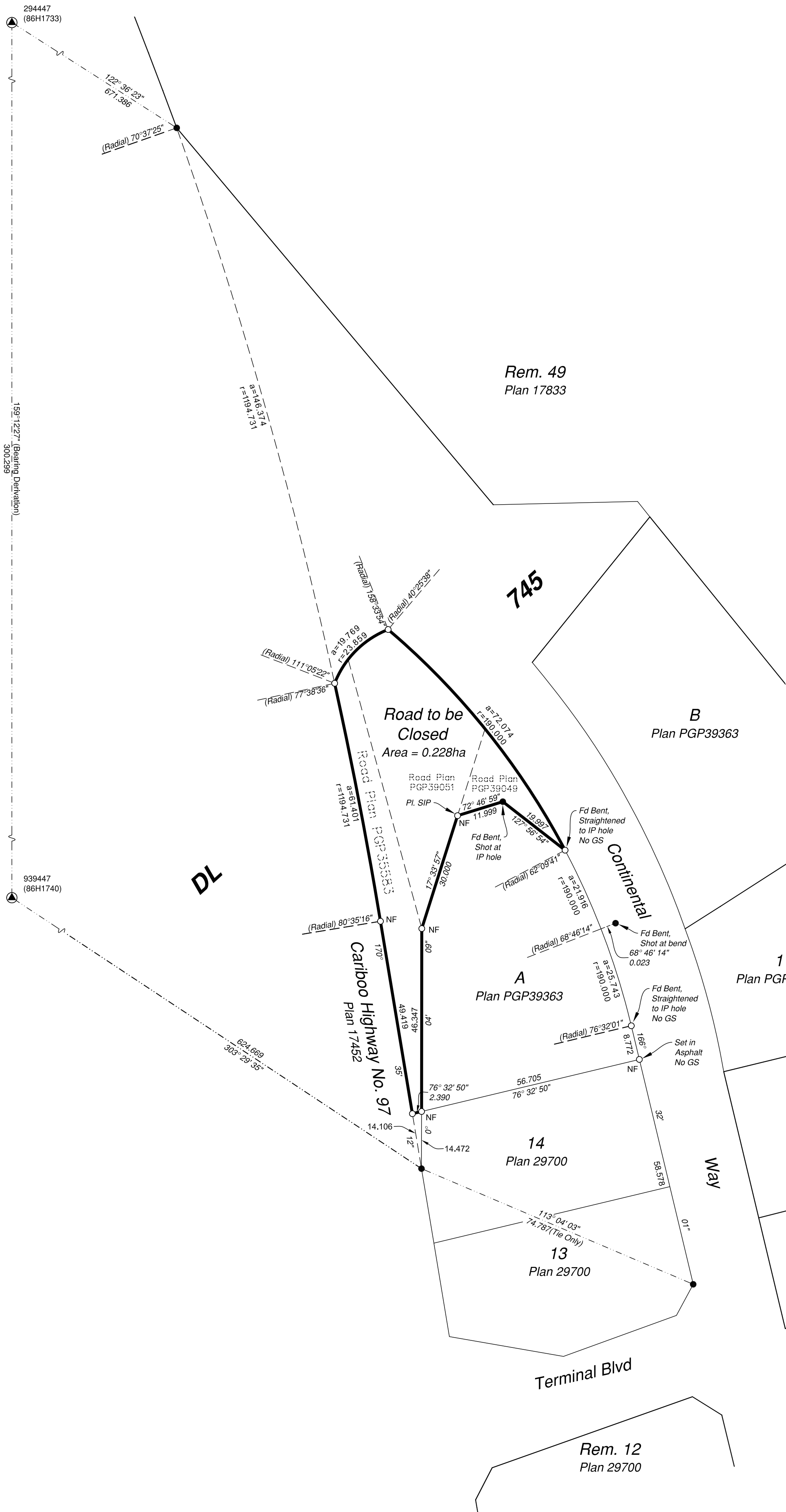
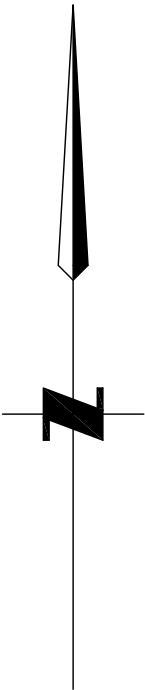
Note:  
Some posts are exaggerated for clarity.

Wooden guard stakes set at all placed  
iron posts unless otherwise noted.

Legend

Symbols	Description
Found	Placed
	Control Monument
	Standard Iron Post
	Short Iron Post
	Wooden Guard Stake
	Combined Scale Factor
	Absolute Horizontal Accuracy

Georeferencing Positions UTM Coordinates, Zone 10, NAD 83 (CSRS), 4.0.0.BC.1				
Station	Northing	Easting	EAHA	CSF
939447	5970239.09	516833.60	0.05	0.9995130
294447	5970519.69	516727.05	0.05	0.9995130



The field survey represented by this plan was  
completed on the 26th day of August, 2019.  
Scott Maguire, BCLS 903  
This plan lies within the Regional District of Fraser-Fort George