

PROVIDING SE I I PROCESS PROF COST  
DISPOSING ENTITY ASSET MONITORING INTELLECTUAL  
LIFE CYCLE MANAGEMENT SYSTEM  
FIXED UPGRADING MAINTAINING FACILITIES INFRASTRUCTURE GOODWILL OBJECTIVE PHYSICAL DIGITAL ENTERPRISE



# Asset Management

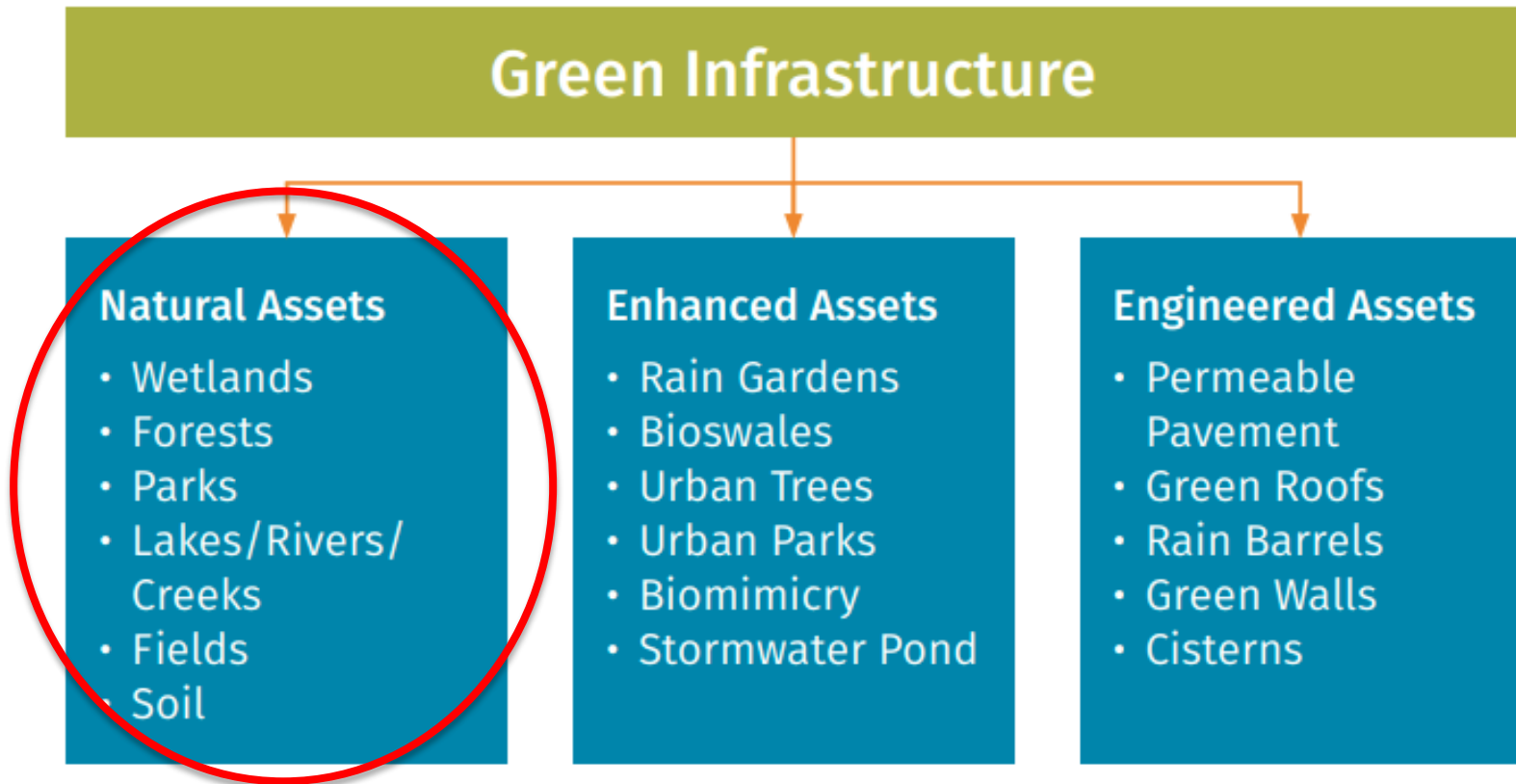
## STRATEGY UPDATE

# ASSET MANAGEMENT FRAMEWORK:



# AREAS OF ASSET MANAGEMENT (AM) PROGRESS

1. Capacity Building
2. Leadership
3. Integration
4. People & Information
5. Assets
6. Planning
7. Implementation



Source: NAI - <https://mnai.ca/capacity-building-for-local-governments/>

.....in Municipal Natural Asset Management



# CAPACITY BUILDING:



## Certificate of Completion

This certifies that the

**City of Prince George**

has completed a Natural Asset Management Roadmap.

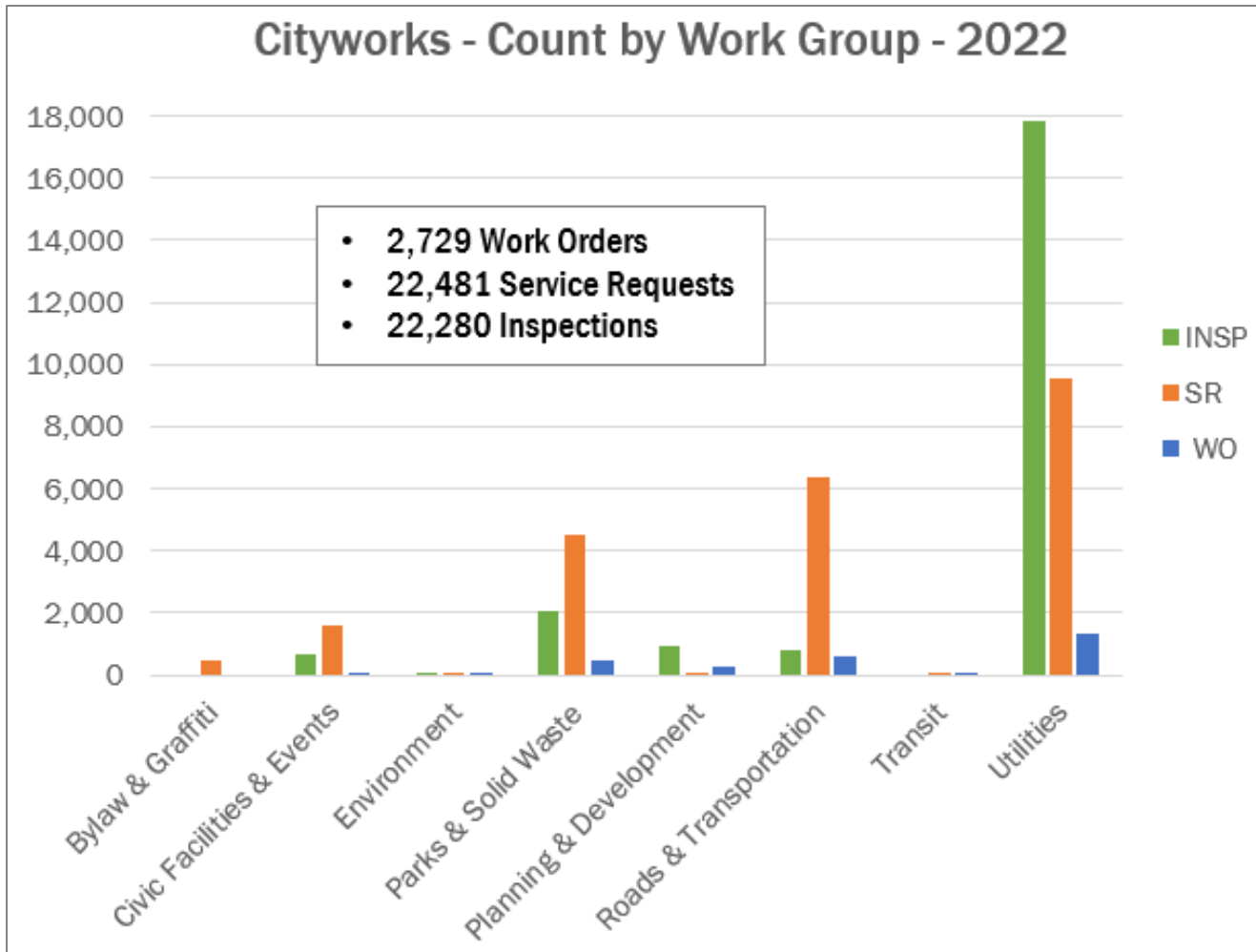
This initiative is offered through the Municipal Asset Management Program, which is delivered by the Federation of Canadian Municipalities and funded by the Government of Canada.



Participants

Todd Angus, Carmen Wildeman, Deanna Wasnik, Wil Wedel, Heather McLeod and Kristy Bobbie

Roy Brooke, Executive Director  
Natural Assets Initiative





## 2022 Excellence in Enterprise Practice Award



City of Prince George, British Columbia

# ➤ LEADERSHIP:







# INTEGRATION:



Inspection Date: 2023-05-24 12:11:37 PM + Panels: Asset Observation

Reports: 3307-3312\_Observation.pdf

Asset:

- Pipe Segment Reference: 8834
- Project: Prepaving 2023
- City: PG
- Street: Queensway
- Location Code: Primary Major Arterial Road
- Location Details: 1933 Queensway
- Pipe Use: Sanitary Sewage Pipe
- Drainage Area: [Empty]
- Year Constructed: [Empty]
- Year Renewed: [Empty]
- Owner: [Empty]
- Total Length:
- Upstream MH: 3307
- Up Rim to Invert: [Empty]
- Up Grade to Invert: [Empty]
- Up Rim to Grade: [Empty]
- Downstream MH: 3312
- Down Rim to Invert: [Empty]
- Down Grade to Invert: [Empty]
- Down Rim to Grade: [Empty]

15.3

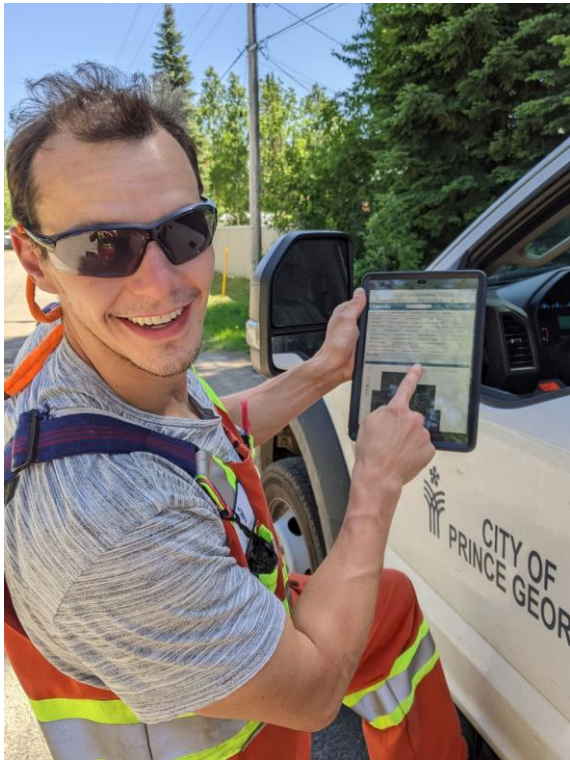
04:30 54:17

USMH: 3307  
DSMH: 3312

CM  
Crack Multiple  
15.3

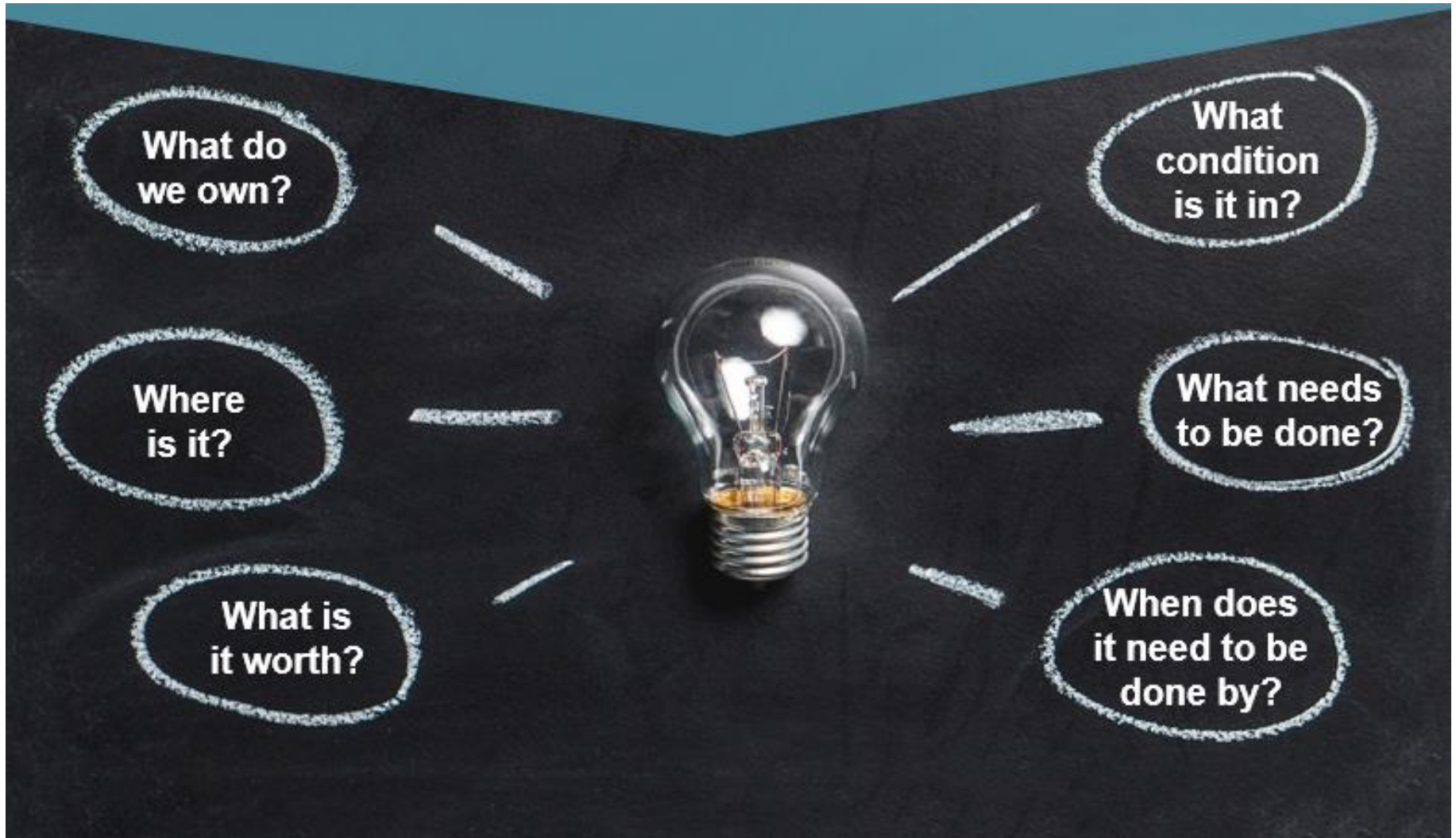
Dis...	Code	Description	Grade	From	To
0	AMH	Access Point Manhole			
0	MWL	Miscellaneous Water Level			
11	TB	Tap Break-in/Hammer		11	
12.8	TB	Tap Break-in/Hammer		12	
15.3	CM	Crack Multiple	3	11	12
15.6	RPP	Point Repair Patch		11	1
15.6	TB	Tap Break-in/Hammer		12	

# ➤ PEOPLE & INFORMATION:



<b>366</b>	Cityworks Users
<b>63</b>	New Users in 2022
<b>12</b>	Exempt Leaders Orientation
<b>2</b>	Prof Cert in AM Planning





## Sanitary Maintenance Dashboard

2019 2020 2021 2022 2023

Flushed Sanitary Mains this Year

**26.3 km**

▼ 9.1 km from last year (-25.778%)

(This value represents flushed mains that may have been done more than once, therefore, value may be higher.)

Sanitary Mains with SLRAT Inspections this Year

**9 km**

▼ 26.4 km from last year (-74.516%)

(This value represents flushed mains that may have been done more than once, therefore, value may be higher.)

### SLRAT

- Good
- Fair
- Poor
- Block
- Verify
- Close

### Relined Sanitary Gravity Main



### Sanitary Pressurized Main

- Force
- Pipe Bridge

### Sanitary Gravity Main

- Collector
- Inverted Siphon
- Outfall
- Trunk

### Sanitary Sewer Structure



## ArcGIS Portal Dashboards in Cityworks – Sanitary Sewer Maintenance

## Civic Facilities Condition Assessment 2022

1. Elder Citizen Rec Association
2. Fire Hall #2 – Ospika
3. Fire Hall #4 – Hart Highway
4. Kin Atrium
5. Kin Centre1 (Arena & Lounge)
6. Pine Valley Golf Clubhouse
7. Search & Rescue Building
8. Seniors Activity Centre
9. South Fort George Rec Centre
10. SPCA Building
11. Two Rivers Art Gallery

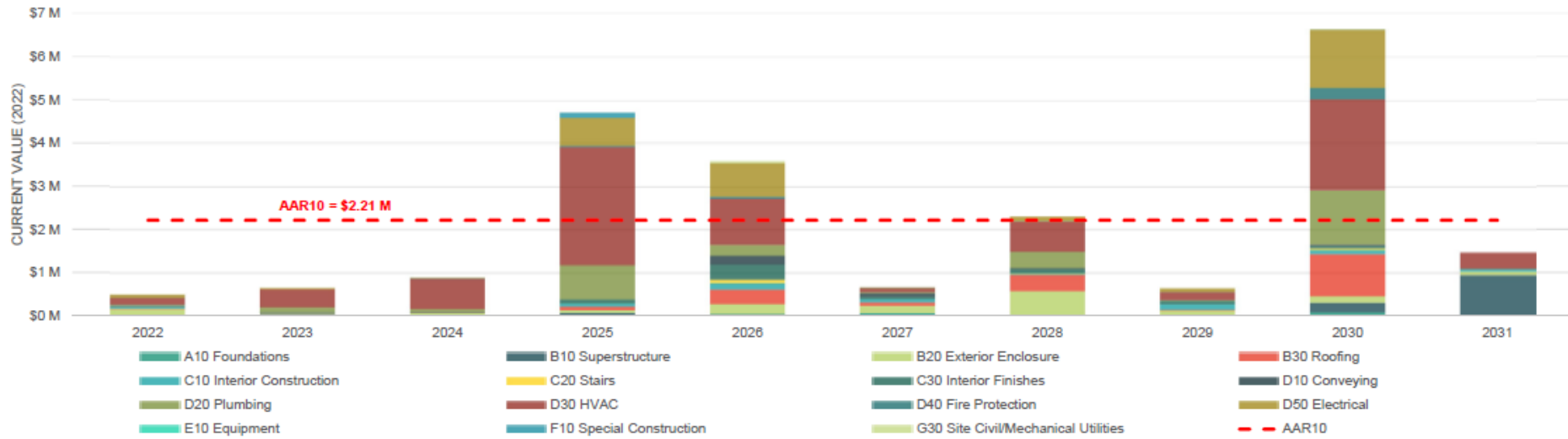
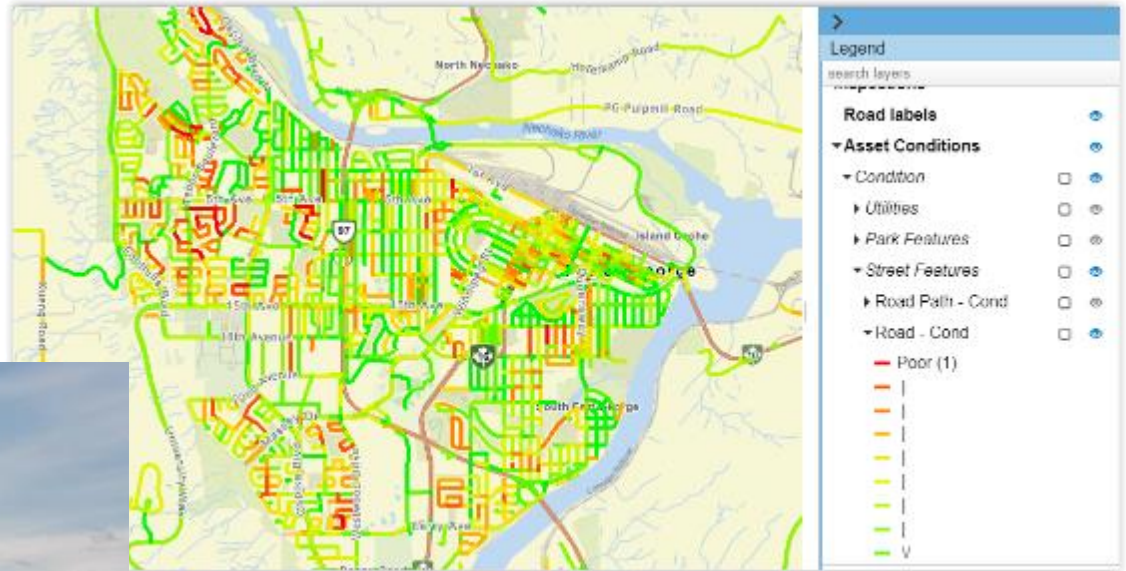
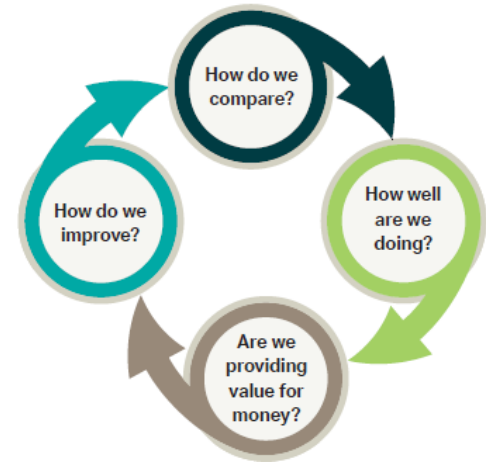


Figure E -1 Unconstrained 10-Year Work Plan by Group Element

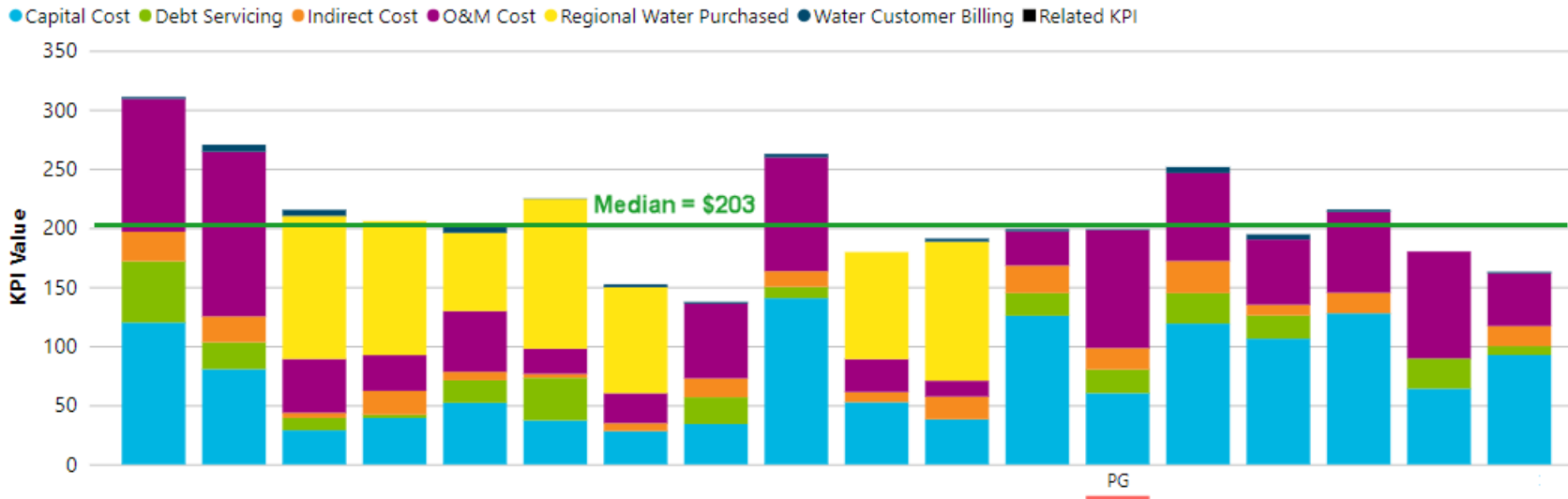
## Paved Road Condition Assessments 2023



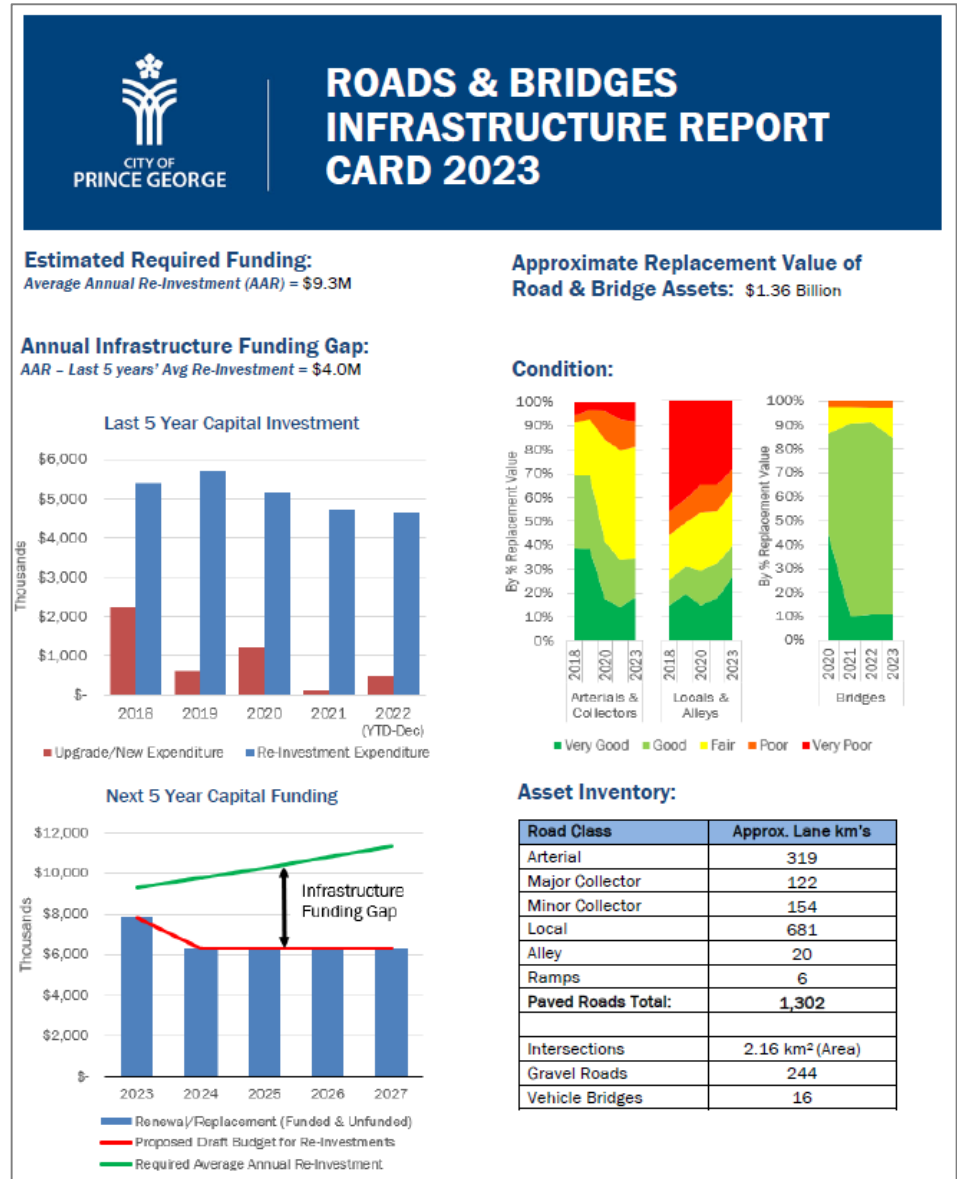
## Canadian Infrastructure Benchmarking Initiative



Displaying: Cost to Provide Water (\$ / Population Served) - Non Outliers



1. Civic Facilities
2. Parks & Trails
3. Roads & Bridges
4. Sidewalks & Walkways
5. Storm Drainage
6. Streetlights & Traffic Signals
7. Sanitary Sewer
8. Water







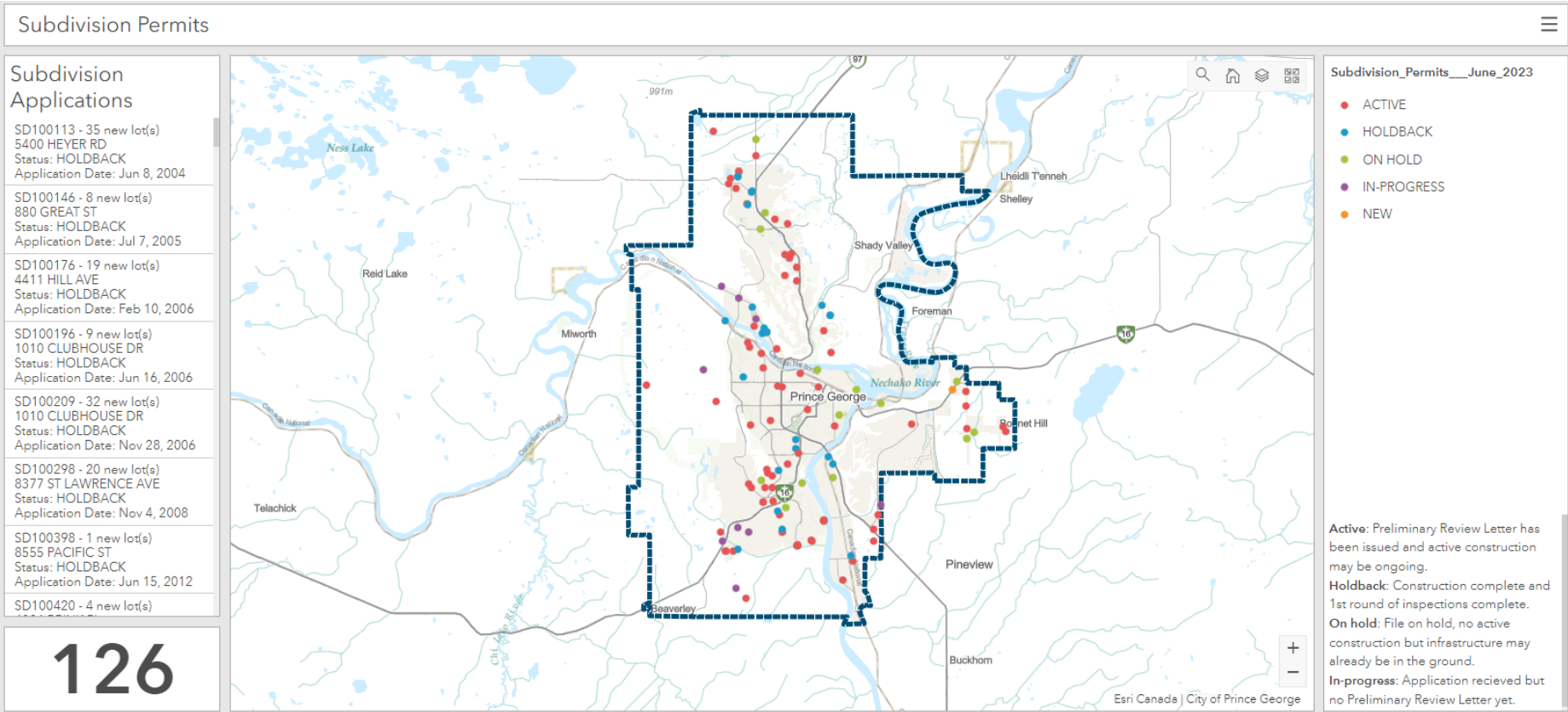
# PLANNING:



## Includes:

- Asset Inventory & Condition
- Levels of Service
- Future Demand
- Lifecycle Management
- Risk Management
- 20-year Financial Summary





ArcGIS Portal Dashboards in Cityworks – *Subdivision Permits*



# IMPLEMENTATION:

## 2022

# of Council Reports & Public Communications Related to Asset Management

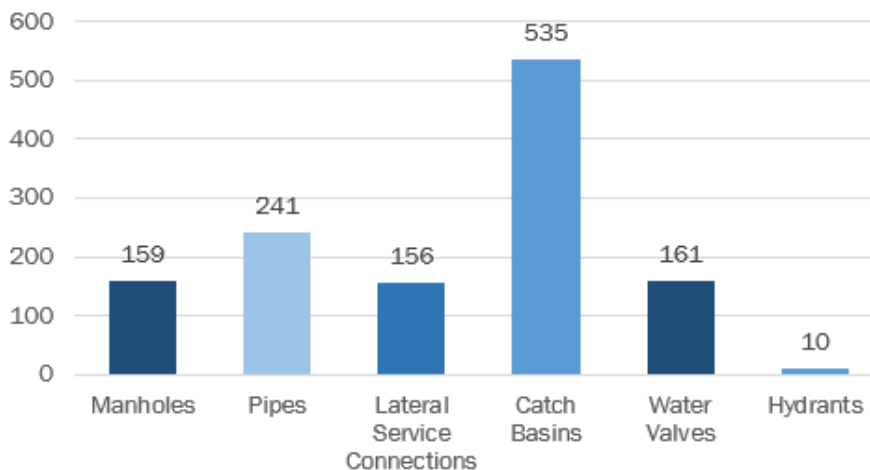
# 7

# of Staff Trained in Asset Management & # Trained in Cityworks

# 14 & 63

366 Active Cityworks Accounts

### # of Assets Created in the GIS in 2022



AM Policy Principle

Completed Actions in 10 Yr Roadmap

Alignment



Informed & Transparent decisions



Appropriate information



Sufficient Resources



Resiliency



Continuous Improvement



Engagement



# SUSTAINABLE SERVICE DELIVERY IS THE GOAL OF ASSET MANAGEMENT

