

# *An opportunity to grow Prince George's Local and Regional Food Security*

## TABLE OF CONTENTS

1. Introduction - p1
2. Overview of the Land - p3
3. History of the Property - p5
4. Who We Are - p8
5. The Vision - p9
6. Our Proposal to the City - p13
7. Alignment with Local and Regional Objectives - p13
8. Proposed and Identified Funding Opportunities - p17

## 1. INTRODUCTION

The Queensway 5 Coalition<sup>1</sup> seeks the City of Prince George's support and engagement to facilitate the next step in our long-term commitment to improving our collective regional food security and sovereignty here in North Central BC. Ed and Lynn Gilliard have approached us to help them make their dream of an urban farm/food hub in the heart of Prince George come true. The response from the community and community institutions has been so enthusiastic that it is clear the time is right. This opportunity has catalyzed a gathering of passionate partners who recognize it as a unique opportunity to establish a long-needed Regional Food Hub.

Food security – how we produce, process and access food, and how much it costs – is front of mind for people in North Central BC. Climate change, supply chain issues, and policy changes, developed far from our region, have impacted our food supply and costs here in the North. Food security, as defined by the United Nations' Committee on World Food Security, means that all people, at all times, have physical, social, and economic access to sufficient, safe, and nutritious food that meets their food preferences and dietary needs for an active and healthy life.

The purchase of 5 acres of the Gilliards' farm, critically close to the downtown core, offers a rare opportunity of a central and urban location to build: a food hub (food

---

<sup>1</sup> The Queensway Garden Society, UNDU, the Eco Living Community Society (ELC), the Everyone At the Table (EAT) collective, the Recycling and Environmental Action Planning society (REAPS), programs of the College of New Caledonia (CNC), professors of the University of Northern BC (UNBC), the Local Food PG Society.

processing and distribution), food and agricultural educational and research centre, a community/urban farm, and expansion of an adjacent, well-established community garden. The Gilliard Farm current owners wish this land to continue in agriculture production (see their desired covenant further in this document). As a prime growing area suitable for growing a variety of crops near downtown with easy access to transportation routes, including walking trails, the site allows easy access to processing and markets.

The 2022 research project *Who's at the Table: A Community-Based Exploration and Mapping of Regional Food Security Initiatives and Structures in a Northern Context* by Drs. Booth & Healy, School of Planning and Sustainability, UNBC (see appendix), confirmed community needs and recommendations for a Regional Food Hub. It **specifically emphasizes** the *requirement* for a physical food hub to serve a critical coordination role for existing food security work as well as actively addressing food security gaps identified by the region's food security experts and food practitioners:

1. People have called for a **physical “hub”** (a food-focused space with necessary facilities such as a commercial grade community kitchen, gathering / classroom area, etc.) and a **virtual “hub”**, in which the needs and desires of all are acknowledged and meaningfully addressed (see report in appendix for details) .
2. Sourcing and securing the physical resources that have been consistently recommended to serve this region, i.e., Prince George based infrastructure (buildings, virtual network, etc.) that can address the unique culture and community needs of the region.
3. Funding that will allow sufficient staffing to identify and support the diversity of demands, i.e., livestock production, agricultural products, as well as services, i.e., marketing, education, and communication.
4. All levels of government and organizations recognize the expertise and diversity already existing in the region around food security work, and *build on existing* strengths, activities and initiatives.
5. Sufficient funding for honoraria to meaningfully acknowledge local champions and knowledge holders who can then support and guide the hub staff, through mentoring and specific expertise.

It is more than time for a Prince George Regional Food Hub that would:

- Improve access to safe, healthy and culturally relevant food while promoting community development
- Improve health and wellness outcomes for community members most at risk of food insecurity
- Promote environmentally sustainable food systems

- Build local resilience to climate impacts and other emergencies

Food Hubs are critical infrastructure designed to create and foster connections within food systems by enabling organizations to partner with each other, the private sector, academia and other service organizations to collectively strengthen local food systems and address food insecurity in a sustainable and just manner. Through these connections, community partnerships are able to promote integrated food system solutions that enhance the social, health, and environmental benefits in the area.

**Building upon this assessment of identified local requirements, the Queensway 5 Group share a vision of a food hub as:**

- A Regional Food Hub serving the region
- An Education Space
- An Innovation & Research Space
- A Facility offering employment & training opportunities
- A Coordinating and Governing Space for the work of existing experts, practitioners and champions of regional food security
- A Welcoming, Collaborative and Inclusive Space

## 2. OVERVIEW OF THE LAND

The 5 acre parcel is located south of Prince George's downtown and the picturesque Connaught Hill Park, with access via Queensway to the east and Porter Avenue to the west. Other notable places in the vicinity of the proposed farm include the Exploration Place, Ron Brent Elementary School, Gateway Lodge Long-Term Care, the South Fort George Family Resource Centre, the Hudson's Bay Wetlands, City Hall, and the existing Queensway Community Garden. All of these sites are within a 15-minute walking radius of the proposed Regional Food Hub, with City Hall at the farthest reaches. Coupled with the public transit service of route 46 and 47, the site offers a noticeably higher transit and walkability score than Prince George's average (See [www.walkscore.com](http://www.walkscore.com)). While these scores do not account for terrain restrictions or trails unavailable on major mapping sites, it does suggest that the accessibility of the site will be higher than many other locations within the city.

The parcel is almost 2 hectares in size and zoned Single Residential (RS2). While the primary use of this zoning is to provide urban housing, the nearby existing community garden in an RS2 zone may support the expansion in order to service more residences in the surrounding area. Furthermore, while the cost of living crisis impacting Canadians across the country may be argued to be more significantly contributed to by a lack of housing security, it is impossible to ignore the importance of food security in this crisis as well.

Figure 1. Locator Map of the Site

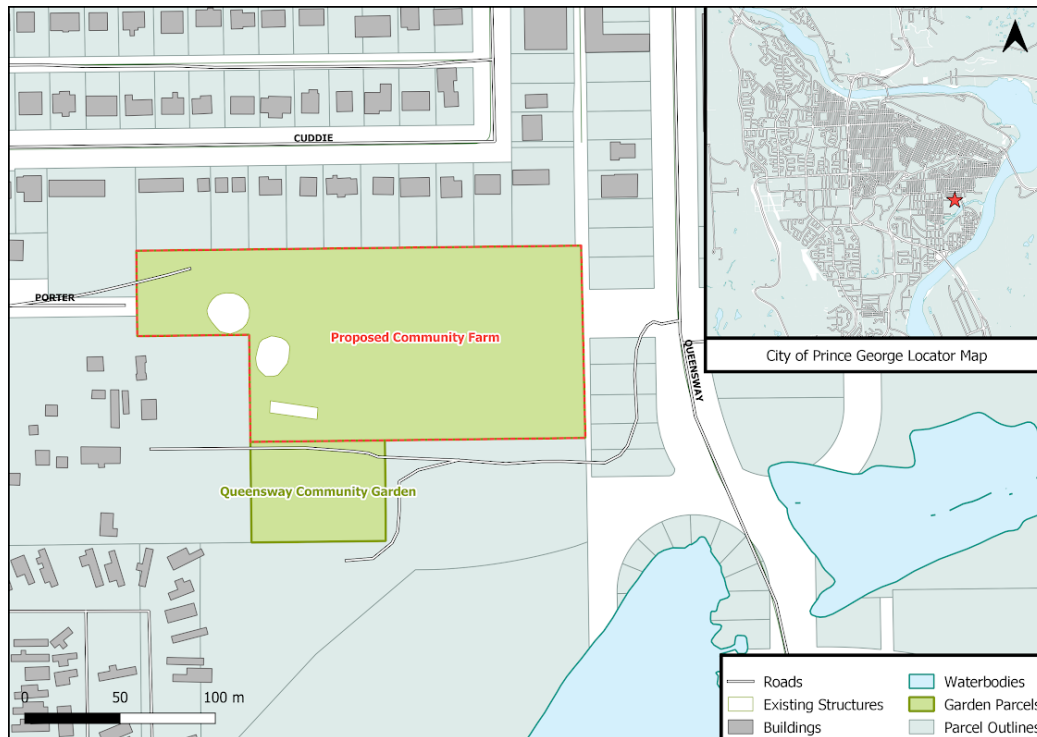
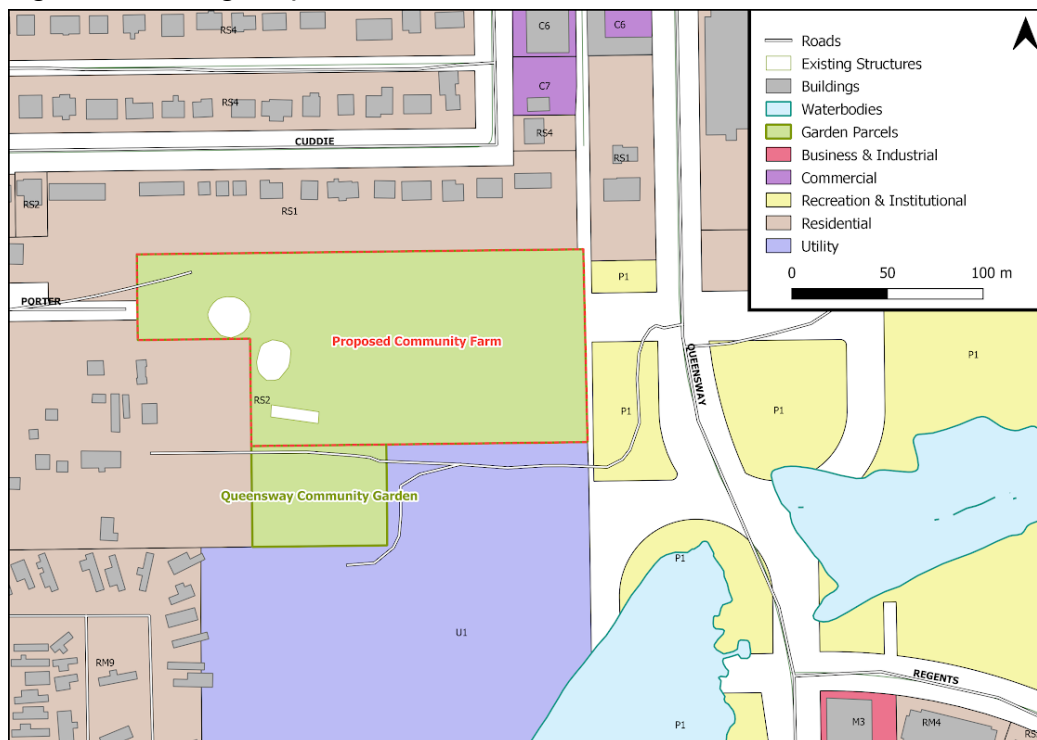


Figure 2. Zoning Map of the Site



**SUBDIVISION PLAN OF PARCEL P (14655M) OF LOT 2, PLAN 1810, EXCEPT PLANS 23642, PGP37712, AND PGP46320; PARCEL O (PLAN B5931); AND PARCEL H (PLAN B643); ALL IN DISTRICT LOT 931, CARIBOO DISTRICT.**

THIS PLAN LIES WITHIN INTEGRATED SURVEY AREA  
No. 38 PRINCE GEORGE, E.C., NA(83) (CERS) 4.0 & C.B. 1  
SCGS 803.267

THE INTERIOR PLAT SIZE OF THIS PLAN IS 160mm WIDE BY 100mm HIGH (5.908 INCHES PLOTTED AT A SCALE OF 1:100).  
ALL DISTANCES ARE IN METERS AND DECIMALS THEREOF.  
GEO-BEAMING ARE DEFINED BY THE COORDINATES BETWEEN GEODETIC CONTROL MONUMENTS (SEE LIST AND REVISIONS).  
THE UTM COORDINATES AND ESTIMATED HORIZONTAL POSITIONAL ACCURACY (WHICH ARE BASED ON DATA FROM MANY OF THE PUBLISHED COORDINATE AND STANDARD DEVIATIONS FOR GEODETIC CONTROL MONUMENTS) ARE:  
THIS PLAN SHOWS HORIZONTAL GROUND-LEVEL DISTANCES UNLESS OTHERWISE SPECIFIED. TO COMPUTE GROUND DISTANCES, MULTIPLY GROUND-LEVEL DISTANCES BY THE CORRECTION FACTOR OF 1.000000 WHICH HAS BEEN DERIVED FROM GEODETIC CONTROL MONUMENTS (SEE LIST AND REVISIONS).  
NOTE: THIS PLAN SHOWS ONE OR MORE INTERIOR PLOTS WHICH ARE NOT FOR THE ROAD CORRIDORS.  
SOME LINES ARE ENLIGHTENED FOR CLARITY.

**LEGEND**

SYMBOLS	DESCRIPTION
ROAD PLACES	
●	CONTROL MONUMENT
○	STANDARD MONUMENT
○	NON-STANDARD MONUMENT
DA	ESTIMATED ABSOLUTE ACCURACY

UTM COORDINATES (ZONE 18, MAGN. 48 & C.B. 1)  
STATION NORTHING EASTING GAA  
PA 17 197285.69 110764.7 0.13  
PA 18 197274.71 109929.29 0.13

REFLECTED UNDER THE LAND TITLE ACT ON THE 15th DAY OF OCTOBER, 2002  
ACCESS TO LOT 2 BY EASEMENT ONLY  
THIS PLAN LIES WITHIN THE JURISDICTION OF THE APPROVING OFFICER FOR THE CITY OF PRINCE GEORGE.  
CPLS FILING NO. 10000000  
THIS FIELD SURVEY SUBMITTED BY THIS PLAN WAS COMPLETED ON THE 28th DAY OF JULY, 2001  
BRUNNEN, GEORGE, BELLER  
THIS PLAN LIES WITHIN THE REGIONAL DISTRICT OF FRASER-FORT GEORGE.

**Parcel P (14655M) of Lot 2, Plan 1810**  
Parcel O (Plan B5931)  
Parcel H (Plan B643)  
Parcel A (22958M) Lot 2 Plan 1810  
Parcel B (231M) Plan 23642  
Parcel C (24663M) Block PLAN  
Parcel D (24663M) Block PLAN  
Parcel E (24663M) Block PLAN  
Parcel F (24663M) Block PLAN  
Parcel G (24663M) Block PLAN  
Parcel H (24663M) Block PLAN  
Parcel I (24663M) Block PLAN  
Parcel J (24663M) Block PLAN  
Parcel K (24663M) Block PLAN  
Parcel L (24663M) Block PLAN  
Parcel M (24663M) Block PLAN  
Parcel N (24663M) Block PLAN  
Parcel O (24663M) Block PLAN  
Parcel P (24663M) Block PLAN  
Parcel Q (24663M) Block PLAN  
Parcel R (24663M) Block PLAN  
Parcel S (24663M) Block PLAN  
Parcel T (24663M) Block PLAN  
Parcel U (24663M) Block PLAN  
Parcel V (24663M) Block PLAN  
Parcel W (24663M) Block PLAN  
Parcel X (24663M) Block PLAN  
Parcel Y (24663M) Block PLAN  
Parcel Z (24663M) Block PLAN  
Parcel AA (24663M) Block PLAN  
Parcel AB (24663M) Block PLAN  
Parcel AC (24663M) Block PLAN  
Parcel AD (24663M) Block PLAN  
Parcel AE (24663M) Block PLAN  
Parcel AF (24663M) Block PLAN  
Parcel AG (24663M) Block PLAN  
Parcel AH (24663M) Block PLAN  
Parcel AI (24663M) Block PLAN  
Parcel AJ (24663M) Block PLAN  
Parcel AK (24663M) Block PLAN  
Parcel AL (24663M) Block PLAN  
Parcel AM (24663M) Block PLAN  
Parcel AN (24663M) Block PLAN  
Parcel AO (24663M) Block PLAN  
Parcel AP (24663M) Block PLAN  
Parcel AQ (24663M) Block PLAN  
Parcel AR (24663M) Block PLAN  
Parcel AS (24663M) Block PLAN  
Parcel AT (24663M) Block PLAN  
Parcel AU (24663M) Block PLAN  
Parcel AV (24663M) Block PLAN  
Parcel AW (24663M) Block PLAN  
Parcel AX (24663M) Block PLAN  
Parcel AY (24663M) Block PLAN  
Parcel AZ (24663M) Block PLAN  
Parcel BA (24663M) Block PLAN  
Parcel BB (24663M) Block PLAN  
Parcel BC (24663M) Block PLAN  
Parcel BD (24663M) Block PLAN  
Parcel BE (24663M) Block PLAN  
Parcel BF (24663M) Block PLAN  
Parcel BG (24663M) Block PLAN  
Parcel BH (24663M) Block PLAN  
Parcel BI (24663M) Block PLAN  
Parcel BJ (24663M) Block PLAN  
Parcel BK (24663M) Block PLAN  
Parcel BL (24663M) Block PLAN  
Parcel BM (24663M) Block PLAN  
Parcel BN (24663M) Block PLAN  
Parcel BO (24663M) Block PLAN  
Parcel BP (24663M) Block PLAN  
Parcel BQ (24663M) Block PLAN  
Parcel BR (24663M) Block PLAN  
Parcel BS (24663M) Block PLAN  
Parcel BT (24663M) Block PLAN  
Parcel BU (24663M) Block PLAN  
Parcel BV (24663M) Block PLAN  
Parcel BW (24663M) Block PLAN  
Parcel BX (24663M) Block PLAN  
Parcel BY (24663M) Block PLAN  
Parcel BZ (24663M) Block PLAN  
Parcel CA (24663M) Block PLAN  
Parcel CB (24663M) Block PLAN  
Parcel CC (24663M) Block PLAN  
Parcel CD (24663M) Block PLAN  
Parcel CE (24663M) Block PLAN  
Parcel CF (24663M) Block PLAN  
Parcel CG (24663M) Block PLAN  
Parcel CH (24663M) Block PLAN  
Parcel CI (24663M) Block PLAN  
Parcel CJ (24663M) Block PLAN  
Parcel CK (24663M) Block PLAN  
Parcel CL (24663M) Block PLAN  
Parcel CM (24663M) Block PLAN  
Parcel CN (24663M) Block PLAN  
Parcel CO (24663M) Block PLAN  
Parcel CP (24663M) Block PLAN  
Parcel CQ (24663M) Block PLAN  
Parcel CR (24663M) Block PLAN  
Parcel CS (24663M) Block PLAN  
Parcel CT (24663M) Block PLAN  
Parcel CU (24663M) Block PLAN  
Parcel CV (24663M) Block PLAN  
Parcel CW (24663M) Block PLAN  
Parcel CX (24663M) Block PLAN  
Parcel CY (24663M) Block PLAN  
Parcel CZ (24663M) Block PLAN  
Parcel DA (24663M) Block PLAN  
Parcel DB (24663M) Block PLAN  
Parcel DC (24663M) Block PLAN  
Parcel DD (24663M) Block PLAN  
Parcel DE (24663M) Block PLAN  
Parcel DF (24663M) Block PLAN  
Parcel DG (24663M) Block PLAN  
Parcel DH (24663M) Block PLAN  
Parcel DI (24663M) Block PLAN  
Parcel DJ (24663M) Block PLAN  
Parcel DK (24663M) Block PLAN  
Parcel DL (24663M) Block PLAN  
Parcel DM (24663M) Block PLAN  
Parcel DN (24663M) Block PLAN  
Parcel DO (24663M) Block PLAN  
Parcel DP (24663M) Block PLAN  
Parcel DQ (24663M) Block PLAN  
Parcel DR (24663M) Block PLAN  
Parcel DS (24663M) Block PLAN  
Parcel DT (24663M) Block PLAN  
Parcel DU (24663M) Block PLAN  
Parcel DV (24663M) Block PLAN  
Parcel DW (24663M) Block PLAN  
Parcel DX (24663M) Block PLAN  
Parcel DY (24663M) Block PLAN  
Parcel DZ (24663M) Block PLAN  
Parcel EA (24663M) Block PLAN  
Parcel EB (24663M) Block PLAN  
Parcel EC (24663M) Block PLAN  
Parcel ED (24663M) Block PLAN  
Parcel EE (24663M) Block PLAN  
Parcel EF (24663M) Block PLAN  
Parcel EG (24663M) Block PLAN  
Parcel EH (24663M) Block PLAN  
Parcel EI (24663M) Block PLAN  
Parcel EJ (24663M) Block PLAN  
Parcel EK (24663M) Block PLAN  
Parcel EL (24663M) Block PLAN  
Parcel EM (24663M) Block PLAN  
Parcel EN (24663M) Block PLAN  
Parcel EO (24663M) Block PLAN  
Parcel EP (24663M) Block PLAN  
Parcel EQ (24663M) Block PLAN  
Parcel ER (24663M) Block PLAN  
Parcel ES (24663M) Block PLAN  
Parcel ET (24663M) Block PLAN  
Parcel EU (24663M) Block PLAN  
Parcel EV (24663M) Block PLAN  
Parcel EW (24663M) Block PLAN  
Parcel EX (24663M) Block PLAN  
Parcel EY (24663M) Block PLAN  
Parcel EZ (24663M) Block PLAN  
Parcel FA (24663M) Block PLAN  
Parcel FB (24663M) Block PLAN  
Parcel FC (24663M) Block PLAN  
Parcel FD (24663M) Block PLAN  
Parcel FE (24663M) Block PLAN  
Parcel FF (24663M) Block PLAN  
Parcel FG (24663M) Block PLAN  
Parcel FH (24663M) Block PLAN  
Parcel FI (24663M) Block PLAN  
Parcel FJ (24663M) Block PLAN  
Parcel FK (24663M) Block PLAN  
Parcel FL (24663M) Block PLAN  
Parcel FM (24663M) Block PLAN  
Parcel FN (24663M) Block PLAN  
Parcel FO (24663M) Block PLAN  
Parcel FP (24663M) Block PLAN  
Parcel FQ (24663M) Block PLAN  
Parcel FR (24663M) Block PLAN  
Parcel FS (24663M) Block PLAN  
Parcel FT (24663M) Block PLAN  
Parcel FU (24663M) Block PLAN  
Parcel FV (24663M) Block PLAN  
Parcel FW (24663M) Block PLAN  
Parcel FX (24663M) Block PLAN  
Parcel FY (24663M) Block PLAN  
Parcel FZ (24663M) Block PLAN  
Parcel GA (24663M) Block PLAN  
Parcel GB (24663M) Block PLAN  
Parcel GC (24663M) Block PLAN  
Parcel GD (24663M) Block PLAN  
Parcel GE (24663M) Block PLAN  
Parcel GF (24663M) Block PLAN  
Parcel GG (24663M) Block PLAN  
Parcel GH (24663M) Block PLAN  
Parcel GI (24663M) Block PLAN  
Parcel GJ (24663M) Block PLAN  
Parcel GK (24663M) Block PLAN  
Parcel GL (24663M) Block PLAN  
Parcel GM (24663M) Block PLAN  
Parcel GN (24663M) Block PLAN  
Parcel GO (24663M) Block PLAN  
Parcel GP (24663M) Block PLAN  
Parcel GQ (24663M) Block PLAN  
Parcel GR (24663M) Block PLAN  
Parcel GS (24663M) Block PLAN  
Parcel GT (24663M) Block PLAN  
Parcel GU (24663M) Block PLAN  
Parcel GV (24663M) Block PLAN  
Parcel GW (24663M) Block PLAN  
Parcel GX (24663M) Block PLAN  
Parcel GY (24663M) Block PLAN  
Parcel GZ (24663M) Block PLAN  
Parcel HA (24663M) Block PLAN  
Parcel HB (24663M) Block PLAN  
Parcel HC (24663M) Block PLAN  
Parcel HD (24663M) Block PLAN  
Parcel HE (24663M) Block PLAN  
Parcel HF (24663M) Block PLAN  
Parcel HG (24663M) Block PLAN  
Parcel HH (24663M) Block PLAN  
Parcel HI (24663M) Block PLAN  
Parcel HJ (24663M) Block PLAN  
Parcel HK (24663M) Block PLAN  
Parcel HL (24663M) Block PLAN  
Parcel HM (24663M) Block PLAN  
Parcel HN (246

*Written by Lynn Gilliard*

## Early Picture of the Homestead

5

which at that time was part of South Fort George, they built a house out of logs that were brought in from Tabor Mountain. This is our current home. They built a Barn, a Root Cellar, a Chicken Coop, other outbuildings, and fenced the property. They worked the land and their vegetables, berries, and other fruits were then taken to Royal Produce, which was the produce store that provided for the people of Prince George and area. This was a time when access to having many fresh vegetables and fruits brought in was not an option, a time when canning, preserving, and making use of locally grown produce was the norm.

After Mr. & Mrs. Sowpal passed away, Valentina Goodwin remained on the property. When we purchased the property from Valentina in 2000, it was her wish that we would keep the land for the growing and production of food, which we have maintained since then. It is our intention to honour our promise. Our vision is to have the 5 acres become a food hub of the interior which would be of benefit to the area and in keeping with what the land in this area was used for and would remain so for many generations to come.

One other interesting fact is that, at one time, the 5 acres was used for the fall fair. During this time, what was grown and raised in the area was a major part of what was on display and of great interest to the residents of Prince George and area. With the need to have food security becoming more and more a reality this seems a timely opportunity to have the 5 acres held to provide an interior food hub.

We are hoping that the 5 acres that we are speaking of will be available to improve regional food security, for the sharing of knowledge, bringing together many different age groups, and individuals. That the area would become a beehive of activities of sharing, while supporting locally grown food and creating educational opportunities and training to take food from ground to table. The land would offer a collaborative, inclusive space where elders could share their knowledge and new ways could be implemented bringing benefits to all. As well, this could happen while assisting in providing close to home solutions regarding food sustainability for our area.

### **Adjoining Parcels to the 5 Acres:**

The homestead is approximately 4 acres on which, currently, there is the original home built in the 1920's, with some updates which is where we live. Our home, which stands tested by time, is a haven and enjoyed by many people on a daily basis. There is a greenhouse for bedding plants, a garden for produce, fruit trees and the original chicken coop remains for the chickens raised for egg production. The barn as well remains in use for our sheep. The root cellar and other buildings of interest are where schools and other groups come for tours. There was even a full tour bus drive in for a tour. This place, God willing, is where we will age in place for many years, as guardians of the 4 acres and find new guardians for the 5 acres.

The 1 acre parcel is currently the Queensway Garden and has been used as such since approximately 2002. It sees the production of fruits, berries, and vegetables by 100 + people which adds produce for them, and those they share with. Other than the food, the garden is a hubbub of activities which brings joy to all that use it. We are hoping that the 5 acres will grow and bring knowledge, sharing and add to the quality of life to all, on all levels - physical, mental, emotional and spiritual while becoming a resource of food, knowledge, and community for Prince George and the area. The one acre is a haven of activity, support and enjoyment for all Queensway Garden members. Our intention for the one acre is to bequeath it to Gardens B.C. when we pass. As my father used to say "We do not own anything. We only care for it and hopefully leave what comes to us better than we found it. We are only guardians of the land."

### **Picture of the Community Garden**

In 2000, when we first acquired the three parcels land, they were some of the lowest in regards to the floodplain. In keeping with the community and mindful of the environment, we were fortunate in that Gateway was groundbreaking and the dirt from there was brought and packed on the 5 acres raising most of the 5 acres above the flood level. The 5 acre parcel, up to 2017, was used for cows, sheep, and horses to graze. In 2016, we were approached regarding having a horse therapy program offered from the property. In September of 2016, with the city's approval, the services began in the spring of 2017. Horse therapy for children became a regular activity on Wednesdays through the Connaught Youth Center and if need be, with permission from the city, to expand to 3 days per week. In 2020, there was an addition of a fenced area for 5 raised garden beds. The sheep's grazing of the 5 acres continues and is a site that is enjoyed by visitors and gardeners alike.

### **Picture of the 5 Acres**

Since 2000 we have and continue to raise vegetables, fruits, berries, chickens for eggs and sheep for sale. We have hosted activities for schools, Northern Health, and seniors to enjoy. In 2021, following our life plan of doing our best to keep on top of what we are able to do, and due to our age, we decided to investigate how we could locate a new guardian for the 5 acres. We wished to do this while honoring the previous guardians in keeping the land for the production of food and health for future generations. The 5 acre parcel is large enough to provide room for a training center, a greenhouse, many gardens and so much more. We are grateful to have the support, knowledge and connections that have presented themselves, through EAT (Everyone At the Table) which is a large open group of concerned people with great knowledge and connections regarding local food security.

In closing and in keeping with our promise to have the property remain a source of food, we are asking for the City, Regional District, and other governing bodies of the area to hold this precious piece of land for future generations to enjoy, grow food, process food, teach and share the value of food sustainability involving all ages, groups and individuals

#### 4. WHO WE ARE

Team Queensway 5 is a diverse coalition with a shared vision of improving regional food security, sovereignty and resiliency for all peoples living in our region. This inclusive group came together to champion this vision, and is supported by a rich diversity of passionate community members from long-term users of the Queensway community garden, to representatives of the local college and university, as well as local food security groups in need of an appropriate home to maximize their contributions. The work of this collectively knowledgeable and passionate group is currently facilitated by the Everyone At the Table (EAT) collective, under the umbrella of the Recycling and Environmental Action Planning Society (REAPS), and guided by the current owners of the land who wish for it to remain agricultural.

Currently at the coalition table (and continuing to grow) are:

The Queensway Garden Society, UNDU, the Eco Living Community Society (ELC), the Everyone At the Table (EAT) collective, the Recycling and Environmental Action Planning society (REAPS), programs of the College of New Caledonia (CNC), professors of the University of Northern BC (UNBC), the Local Food PG Society.

The Baldy Hughes Therapeutic Community and Farm executive director has expressed an interest in incorporating future programs and learning opportunities in their reintegration program. A partnership is also being explored with DART.

#### Key Partners:

The College of New Caledonia's Continuing Education Department is committed to building resilient food security programs and education options to ensure we have a well-supported base of workers and volunteers for these new initiatives.

Researchers at the University of Northern British Columbia will continue to engage with the project through class projects and ongoing research projects.

#### Letters of support (attached):

1. Annie L. Booth PhD, MES, BA, MCIP, RPP, Professor, Environmental and Sustainability Studies, University of Northern British Columbia
2. Colin Dring, Ph.D., M.Sc., Department of Environment and Sustainability, Royal Roads University



3. Community Futures of FFG, Susan Stearn, General Manager
4. David. J. Connell, PhD, Professor, Ecosystem Science and Management, University of Northern British Columbia
5. District C Farmers' Institute, Michelle Miller, President
6. Dr Amelia Merrick, Acting Dean, School of Access and Continuing Education, College of New Caledonia
7. Dr Kathy D. Lewis, Interim Dean, Faculty of Environment, Interim Vice-President, Research and Innovation, UNBC
8. Eco-Living Community Society, Ann Duong, vice-chair & Scott Monroe, Director
9. The Everyone At the Table collective
10. Live Well Prince George Society, Margaret Jackson, President
11. Northern Health Authority, Dr Rachel Kling MD MSc MPH FRPC, Medical Health Officer, Amelia Gallant MPH RP, Regional Lead, Food Security, Jeff Kormos, Population & Public Health
12. Prince George Native Friendship Centre, Barb Ward-Burkitt, m.Ed.. O.B.C., Executive Director
13. Public Health Association of BC, Shannon Turner, BA BSc MSc PhD(c), Executive Director.
14. Queensway Garden Society, Pat Ellis, Volunteer Manager,
15. REAPS, Terri McClymont, Executive Director
16. UNDU, Katt Cadieux, Executive Director

## 5. THE VISION

Very soon after the coalition came together, we met to explore our shared values/vision and to check if they were a match to Ed and Lynn's vision for the land.

### **Vision**

We envision the Regional Food Hub as a lush food garden surrounding a commercial kitchen and teaching space, fruit trees, greenhouses, bees.... It is located close to a food insecure neighbourhood (the VLA-Veteran Land Act neighbourhood), offering a critically needed community food access, convening space, educational space to teach food preparation and processing, and a demonstration urban farm.

### **We envision that the Regional Food Hub will be:**

- Held in trust for food security and sovereignty for present and for future generations.
- A place to grow food and learn how to grow
- A place to process food and learn how to process

- A space to improve regional food sovereignty and security
- A teaching site for knowledge transfer (i.e., local master gardeners have indicated that they would love to be a part of a project like that teaching others to garden)
- A commercial kitchen (free or affordable access for community groups who improve food security for the food insecure, rent to small businesses)
- Many groups working together collaboratively
- Potential to rent an acre to young farmers as incubator market garden
- Potential to have a weekly market in a beautiful setting accessible by walking trails.
- Sets a strong precedent for PG and the region to take action of food security and resilient food systems

### **What it is:**

Education Space

Innovation Space

Food system/hub serving all of Prince George and region

Employment opportunities

Reaching communities that are already engaged

Collaborative Space

### **Our Shared Values:**

- Accessible to all and inclusion are foundational values - reaching out to community members who have the least-Inclusion as an action, not only a concept.
- Collaboration & Intersection
- Community Values - providing space for harvest festival or markets
- Community Strengthening - facilitate groups working together
- Congruence: the way we function reflects our values
- Food independence (sovereignty), improved
- Intergenerational collaboration, such as school plots that are supported by elders in the summer months.
- Justice, including justice to earth - treating the soil that feeds us with respect, nourishing the soil (organic, permaculture)
- Reciprocity - grow food over summer and have a fall feast bringing elders and youth together.
- Action towards reconciliation and reparation - support Indigenous food sovereignty
- Transparency

## **Ed & Lynn Gilliard desired covenant:**

### **Queensway 5 " our vision**

1. That the transfer of ownership of the land be completed by December 31, 2023 with a covenant in place to protect our vision for the continued use of the land for farming and food-related activities.
2. The covenant would protect the land for agricultural / farm / and food educational use forever.
3. Our vision is that the land be placed in the hands of a community-based group taking on the lead role to oversee its use; that like-minded groups make full use of the 5 acres to produce food, provide education, and to develop a sustainable food / farm educational resource in the PG area; that the community group would become the new stewards of "Queensway 5", and that they may have the assistance from the City of PG and or the Regional District of Fraser Fort George.
4. That those making use of the land practice organic, agroecological methods, giving honor and respect to the 5 acres and the adjacent gardens, wetlands and neighbours.
5. When space is available, that seniors who move into the city due to aging or medical reasons are offered an opportunity for a garden space to maintain a connection to the land which may add to their quality of life and give them an opportunity to share their knowledge with others.
6. That all people have the opportunity to participate and share ideas for the benefit of the use of the land keeping to the vision of agriculture, farming and education.
7. That the group that takes on the lead role would work hand in hand for the best of the community of Prince George.
8. That as many other community groups as possible, whose visions align, be facilitated as quickly as possible and that the 5 acres be used to its full potential.
9. That those who are using the land collaborate with each other in a positive, respectful way keeping to the original vision for the land.
10. This land could be used for beekeeping, greenhouses, composting, gardens for food, medicine plants, berries, fruits, herbs, and trees. An education and sharing center, with a tool repair and storage shed to maintain and teach how to fix tools and machinery on site would be useful. Reach out to schools, senior centers, mental health providers and other community groups to share in the experiences of land in the city used for agriculture and farming ... maybe even a small barn and some animals, and / or chickens ...

Maybe even a heritage site with the olden day tools, homemaking items on display.

11. NOTE : Should, for any reason, the 5 acres not remain in the hands of the stewards that come after us, that the transfer of the land be done with the same covenant in place and that the price for the land be the same or less than currently negotiated.

## THE PROPOSED WORK PLAN:

### **Year 1:**

#### Physical hub:

- Continue to promote the vision and mobilize the community and community organizations/institution
- Purchase the land
- Soil enriching through medium scale composting
- Teach composting and soil restoration
- Collaborate with local businesses and food banks to divert organic waste from landfill and into soil building.

#### Virtual hub:

- While supported by the umbrella of an existing well established society, decide on the best structure to adopt to organize in the long term and put it in place.
- Make Justice, Equity, Diversity/decolonizing, Inclusion training available to all coalition participants
- Build the foundations of a regional food security council
- Engage with post-secondary educators and students

### **Year 2:**

#### Physical Hub:

- Expand the community gardens
- Commercial kitchen
- Teaching/mentoring

#### Virtual Hub:

- Queensway 5 governing organizational structure established
- Regional Food Policy council/network in place
- Continue to offer Justice, Equity, Diversity/decolonizing, Inclusion training to all coalition participants
- Continue with and build engagement with community partners and post-secondary educators and students
- Community Visioning on future needs, goals and projects
- Development and grant submission

## 6. OUR PROPOSAL TO THE CITY

Our proposal for the City's partnership in this project is the following:

- The City of Prince George purchases the 5 acres from Ed and Lynn Gilliard
- A covenant is registered on the land title to entrench the values of food production, social justice, and ecological integrity. The covenant will be written in partnership with the City.
- A Governing Body will be created to take on full responsibility for maintaining and managing the land over the long term
- Upon the sale of the land, the Recycling and Environmental Action Planning Society (REAPS) will assume the role of temporary custodian of the land. They will maintain the land until the new Governing Body can take over guardianship, ensuring a smooth transition

## 7. ALIGNMENT WITH LOCAL AND REGIONAL OBJECTIVES

This initiative beautifully aligns with both the Regional Agricultural Strategy recently adopted by the Regional District of Fraser Fort George and the current Official Community Plan of Prince George in regards to local/regional food security and sovereignty. Its potential impact on local population health is significant. The following is a list of City policy relevant to Local Food Security from Prince George's Official Community Plan (May 15 2020):

Policy 13.5.14 The City should adopt a community generated food charter that sets out a vision for food and agriculture in Prince George.

P5 maintaining the integrity of a secure and productive resource base, including agricultural land reserve and aggregate resources

P47 Policy 6.4.11 Integrated land use approaches should be implemented wherever possible to improve opportunities for biodiversity, ecosystem connectivity, recreation, agriculture, and local food production, while reducing conflicts.

P72 Food Security:

Food and agriculture play an important role in a sustainable community by improving the environment, the economy, the health of our population and our community's well being. Access to quality, local food is increasing in demand throughout much of North America due to high cost of food, limited availability and a growing awareness in

sustainable agriculture. The increasing costs associated with the production and shipping of food can result in limitations for community access to quality food. The production and supply of local food can help provide food security but requires support to establish systems for community food production at all levels.

Policy 7.3.7 Support agricultural and food systems planning to improve the current state of food systems and to encourage local food self-reliance.

P73 Policy 7.3.5 Support increased consumer access to local and healthy food through local food institutions and retail markets throughout the community.

P92 Objective 8.1.12 Preserve forests, agricultural lands, soils, and environmental resources.

P93 Policy 8.1.8 The City does not support farmland subdivisions in the ALR or agriculturally valuable lands that produce any parcels smaller than 15 ha parcels.

P93 Policy 8.1.9 The City may identify agriculturally valuable lands outside the ALR and encourage their inclusion into the ALR.

P100 Food Systems and Urban Agriculture [7 policies]

P106 Policy 8.3.21 The City should undertake a review of the zoning bylaw to ensure that farmers markets, community gardens, etc., are permitted use of both public and private realms and that design guidelines support food production.

P123 Policy 8.3.117 The City should support ALR designations within the City's boundaries. Changes to the designation should be supported only if land is shown by a qualified professional to have limited agricultural suitability and where land use changes work to support food and agriculture systems (e.g., farmland dedications of equal or greater value for community trust and/or upgrades to farming or farmland infrastructure).

P175 Opportunities for local food production

P179 Social Development. Policy 11.3.2 The City should consider acquiring land to support sustainable food systems.

P195 Social Development - Food Security

Policy 13.2.31 The City should undertake a review of the zoning bylaw to ensure that farmers markets, community gardens, etc., are a permitted use of both public and private realms and that design guidelines support food production.

Policy 13.2.32 The City should include a comprehensive definition of farmers markets in the zoning bylaw.

P206 Food Security. Policy 13.4.20 To adapt to climate change, projected precipitation and temperature changes should be considered when creating agricultural plans and

agricultural land allocations. The City should undertake further study to consider the potential for increased agricultural capacity in the future.

P211 Food Security [6 policies]

Policy 13.5.14 The City should adopt a community generated food charter that sets out a vision for food and agriculture in Prince George.

Social Development Strategy recommendations 2018

[https://princegeorge.ca/City%20Services/Documents/Social%20Planning/SDS\\_2018%20\(2\).pdf](https://princegeorge.ca/City%20Services/Documents/Social%20Planning/SDS_2018%20(2).pdf)

P23 Support opportunities for sustainable food sources including community gardening

P29 Utilize City levers (policy, grants, zoning, etc.) to support further development of community gardens and access to healthy food.

*Dr. David Connell also extracted the following relating to food and agricultural land reserves from myPG Sustainability Plan:*

<https://princegeorge.ca/City%20Services/Pages/Sustainability.aspx>

## PART I

- Vision: "...good food on the table..."

P5 "An easy ride: With few impacts of climate change, developing countries grow and compete for resources. Local cooperation leads to more self-sufficient local economies, with more compact cities, healthier lifestyles, and strong local food systems."

P8 Diverse economy: Have a diverse economy to augment our forestry base, responding well to changing global trends, and offering a good local return on investment through a focus on local food, service, green energy, and a knowledge-based resource economy connected to the world.

p18 Support multi-organizational collaboration for sustainable food systems in Northern BC

p18 Eat fresh, local foods; Plant a garden; Visit a Farmers' Market to purchase locally grown healthy foods

p30 Buy local food to reduce emissions from transporting food

p34 Protect valuable agricultural, environmentally sensitive, and hazardous lands from development

p35 Omineca Beetle Action Coalition (OBAC) Agricultural Strategy fosters a healthy agriculture sector utilizing our productive agricultural land

p38 Buy local foods & products

p44 Prince George Official Community Plan (OCP): Protect agricultural lands, environmentally sensitive areas, and key wildlife habitat

p48 Encourage Community-Supported Agriculture (CSAs) and other farmer to consumer links (e.g. build on Farm-to-School program)

p48 Diverse economy

A diverse economy augments our forestry base, responds well to changing global trends, and offers a good local return on investment through a focus on local food, service, green energy, and a knowledge-based resource economy connected to the world

P48 Extend or adapt the Omineca Beetle Action Coalition (OBAC) Agricultural Strategic Plan to set up multi-organizational collaboration for a sustainable food system in Northern BC

## PART II

P77 local food, food security

P78 local food production

P116 local food and farming

P118 Support a food system that provides healthy food, supports viable local production, and helps community members make healthy choices

P118 stronger local food programs

P129 Support local agriculture and food through municipal policy

P129 Support and expand regional agriculture and the market for local food

Also see the recently adopted Regional Agriculture strategy: <https://www.rdffg.bc.ca/agriculture> of the Regional District of Fraser Fort George.



## 8. PROPOSED AND IDENTIFIED FUNDING OPPORTUNITIES

- The provincial government will be continuing to invest in food hubs, with local governments and organizations across BC<sup>2</sup>.
- The Quesnel Food Hub is an initiative of the City of Quesnel supported by the BC Ministry of Agriculture and the Northern Development Initiative Trust.
- The Real Estate Foundation of BC, a philanthropic organization working to advance sustainable, equitable, and socially just land use in BC.
- Each partner will seek their own funding from appropriate sources. For ex., funding for CNC to teach how to grow could come from the Ministry of Social Development and Poverty Reduction in collaboration with the Ministry of Agriculture.
- BC United Way supports food justice projects.
- Northern Health IMAGINE Community Grants support projects that address community-led health and wellness initiatives while improving the well-being of all Northern BC residents.
- Municipal community grants.
- RDFFG grants.
- Prince George Community Foundation.
- Plan H: in collaboration with the municipality or the Regional District, a partner could apply for a Stream 1 grant for as much as \$25,000 for age-friendly assessments and action plans or a Stream 2 grant for as much as \$15,000 for age-friendly projects.
- Danone Institute of North America (DINA) is now accepting proposals for its 2023-2025 Sustainable Food Systems Initiative. DINA will award five grant recipients USD \$50K in efforts to focus on improving public health through sustainable food systems. An additional USD \$10K will be granted to the team with the strongest communications plan.

---

<sup>2</sup> Government of BC (2023). Historic investment in food security support British Columbians. <https://news.gov.bc.ca/releases/2023AF0016-000277>