

REFERENCE PLAN OVER PART OF LOT 104, DISTRICT LOTS 2507 AND 2609, CARIBOO DISTRICT, PLAN 22809.

PLAN EPP124828

PURSUANT TO SECTION 99(1)(e) OF THE LAND TITLE ACT.
FOR COVENANT PURPOSES

THIS PLAN LIES WITHIN INTEGRATED SURVEY AREA
No. 39 PRINCE GEORGE, BC, NAD83 (CSRS) 4.0.0.BC.1

BCGS 93G.096



THE INTENDED PLOT SIZE OF THIS PLAN IS 432mm IN WIDTH BY 560mm IN HEIGHT (C SIZE) WHEN PLOTTED AT A SCALE OF 1:750.

ALL DISTANCES ARE IN METRES AND DECIMALS THEREOF.

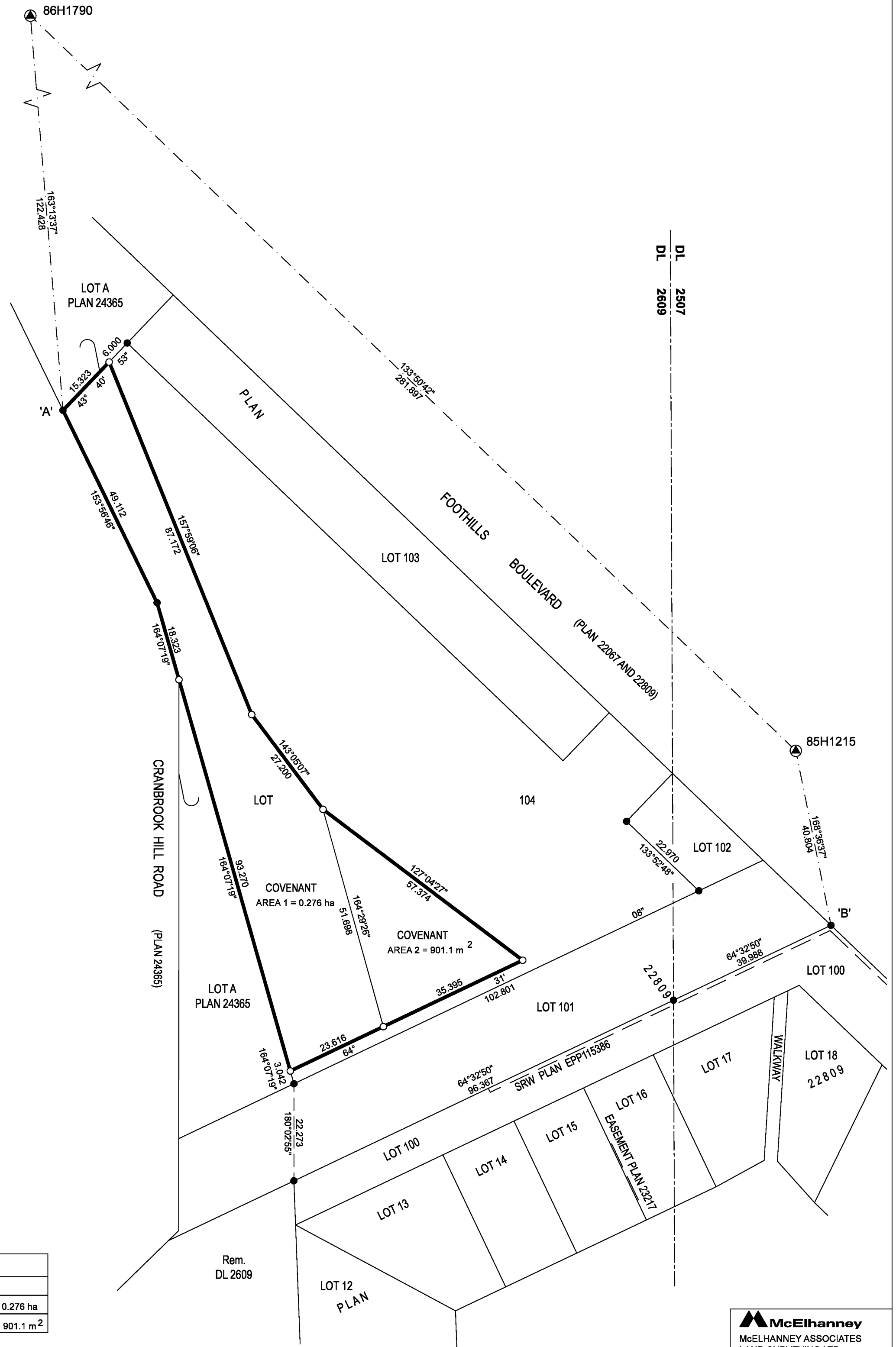
GRID BEARINGS ARE DERIVED FROM OBSERVATIONS BETWEEN GEODETTIC CONTROL MONUMENTS 85H1215 AND 86H1790.

THE UTM COORDINATES AND ESTIMATED ABSOLUTE ACCURACY ACHIEVED HAVE BEEN DERIVED FROM MASCOT PUBLISHED COORDINATES AND STANDARD DEVIATIONS FOR GEODETTIC CONTROL MONUMENT 86H1790.

THIS PLAN SHOWS HORIZONTAL GROUND-LEVEL DISTANCES UNLESS OTHERWISE SPECIFIED. TO COMPUTE GRID DISTANCES, MULTIPLY GROUND-LEVEL DISTANCES BY THE AVERAGE COMBINED FACTOR OF 0.9995072 WHICH HAS BEEN DERIVED FROM CONTROL MONUMENTS 85H1215 AND 86H1790.

LEGEND

SYMBOLS		DESCRIPTION
FOUND	PLACED	
⊙	⊙	CONTROL MONUMENT
●	○	STANDARD IRON POST
EAA		ESTIMATED ABSOLUTE ACCURACY



GEOREFERENCING POSITIONS UTM COORDINATES, ZONE 10, NAD 83 (CSRS), 4.0.0.BC.1			
STATION	NORTHING	EASTING	EAA
Fd.IP'A'	5974103.11	511928.87	0.09
Fd.IP'B'	5973985.11	512104.82	0.09

BOOK OF REFERENCE		
DESCRIPTION	PID	AREA
LOT 104, DL 2507 AND 2609, CARIBOO DISTRICT, PLAN 22809	004-343-603	AREA 1 = 0.276 ha
LOT 104, DL 2507 AND 2609, CARIBOO DISTRICT, PLAN 22809	004-343-603	AREA 2 = 901.1 m ²

THE FIELD SURVEY REPRESENTED BY THIS PLAN WAS COMPLETED
ON THE 4th DAY OF OCTOBER, 2022
SHAUNA C. GOERTZEN, BCLS 798

THIS PLAN LIES WITHIN THE REGIONAL DISTRICT OF FRASER-FORT GEORGE.

McElhanney
McELHANNEY ASSOCIATES
LAND SURVEYING LTD.
Suite 12
556 North Nechako Road
Prince George BC
Canada V2K 1A1
Tel 250 561 2229
File No. 2341-06895-COV