

Age Friendly Spaces

PRINCE GEORGE ADVISORY COMMITTEE ON ACCESSIBILITY

Outline

- ▶ Importance
- ▶ Purpose
- ▶ Parking
- ▶ Entrances
- ▶ Access Routes
- ▶ Dwellings
- ▶ Washrooms
- ▶ Next steps

Importance

- ▶ City commitment
- ▶ It's good business
- ▶ It's a growing need
- ▶ Ableism and human rights

“*When places are universally designed, all people benefit – parents with children travel with ease, people driving scooters can come and go as they like, individuals packing groceries and students carrying books can use automatic doors, and people with temporary injuries can move around easier and heal faster.*”

Purpose

- ▶ High level overview
 - ▶ Key guidelines of importance
 - ▶ Key accessibility issues encountered
- ▶ Intended to accompany detailed review of ACA Age Friendly Spaces Handbook



Age Friendly Parking Key Points

- ▶ Number of spaces
- ▶ Clear space surrounding the space
- ▶ Clearly marked
- ▶ Connected to entrances with clear pathways free of elevation changes, barriers or steps



Age Friendly Parking

Common Issues

- ▶ Space width
- ▶ Clear space for unloading van ramps
- ▶ Lack of connectivity to other areas



Age Friendly Entrances Key Points

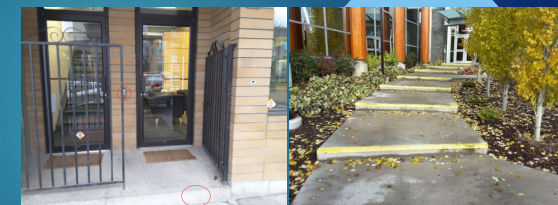
- ▶ One entrance for everyone!
- ▶ Automatic doors
- ▶ Level surfaces
- ▶ Free from obstacles
- ▶ Connected to parking areas
- ▶ Connected to all areas of the building



Age Friendly Entrances

Common Issues

- ▶ Separate entrances for PWDs
- ▶ Requiring access to be requested
- ▶ Push buttons in impractical spaces
- ▶ Lack of connectivity to other spaces



Age Friendly Access Routes Key Points

- ▶ Safe and out of traffic
- ▶ Level
- ▶ Obstacle free
- ▶ Connect parking, entrances and other key features of public spaces



Age Friendly Access Routes

Common Issues

- ▶ Overall absence
- ▶ Requirement to enter traffic
- ▶ Lack of delineation
- ▶ Obstacles and steps present



Age Friendly Dwellings Key Points

- ▶ No-step entrance
- ▶ Level pathway to parking
- ▶ Accessible first-storey washroom
- ▶ Wider doorways



Age Friendly Dwellings

Common Issues

- ▶ Interior and exterior steps
- ▶ Doorway lips
- ▶ Lack of washroom consideration



Age Friendly Washrooms Key Points

- ▶ Well signed
- ▶ Ample turning space
- ▶ Correct bar placement for transfers
- ▶ Faucets, switches and accessories reachable by person in wheelchair



Age Friendly Washrooms

Common Issues

- ▶ Bar placement
- ▶ Turning radius/interior space
- ▶ Accessory height



Next Steps

- ▶ Use the ACA Accessibility Best Practice Handbook to prepare future building plans or audit current facilities
- ▶ *Not sure where to start to make your space more accessible?* Hire someone who has experience with accessibility audits to assess your business or organization and provide you with invaluable insight into the needs of people with disabilities
- ▶ Implement the recommendations from audits completed on civic facilities

Questions?