

**Reference Plan to Accompany  
By-law No. 9068 (City of Prince  
George) to close a portion of Lane  
shown dedicated on Plan 1409,  
Block 23, District Lot 417,  
Cariboo District.**

Pursuant to Section 120 of the Land Title Act and Section 40 of the Community Charter.

Integrated survey area No. 39 Prince George, BC,  
NAD83 (CSRS) 4.0.0.BC.1

BCGS 93G.097



The intended plot size of this plan is 432mm in width by 559mm in height (C size) when plotted at a scale of 1:250.

All distances are in metres and decimals thereof.

Grid bearings are derived from observations between geodetic control monuments 383869 and 842435.

The UTM coordinates and estimated absolute accuracy achieved have been derived from uncorrected coordinates and standard deviations for geodetic control monuments 383869 and 842435.

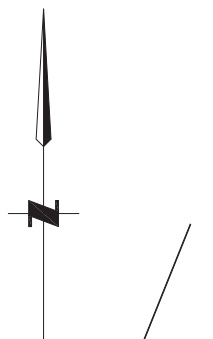
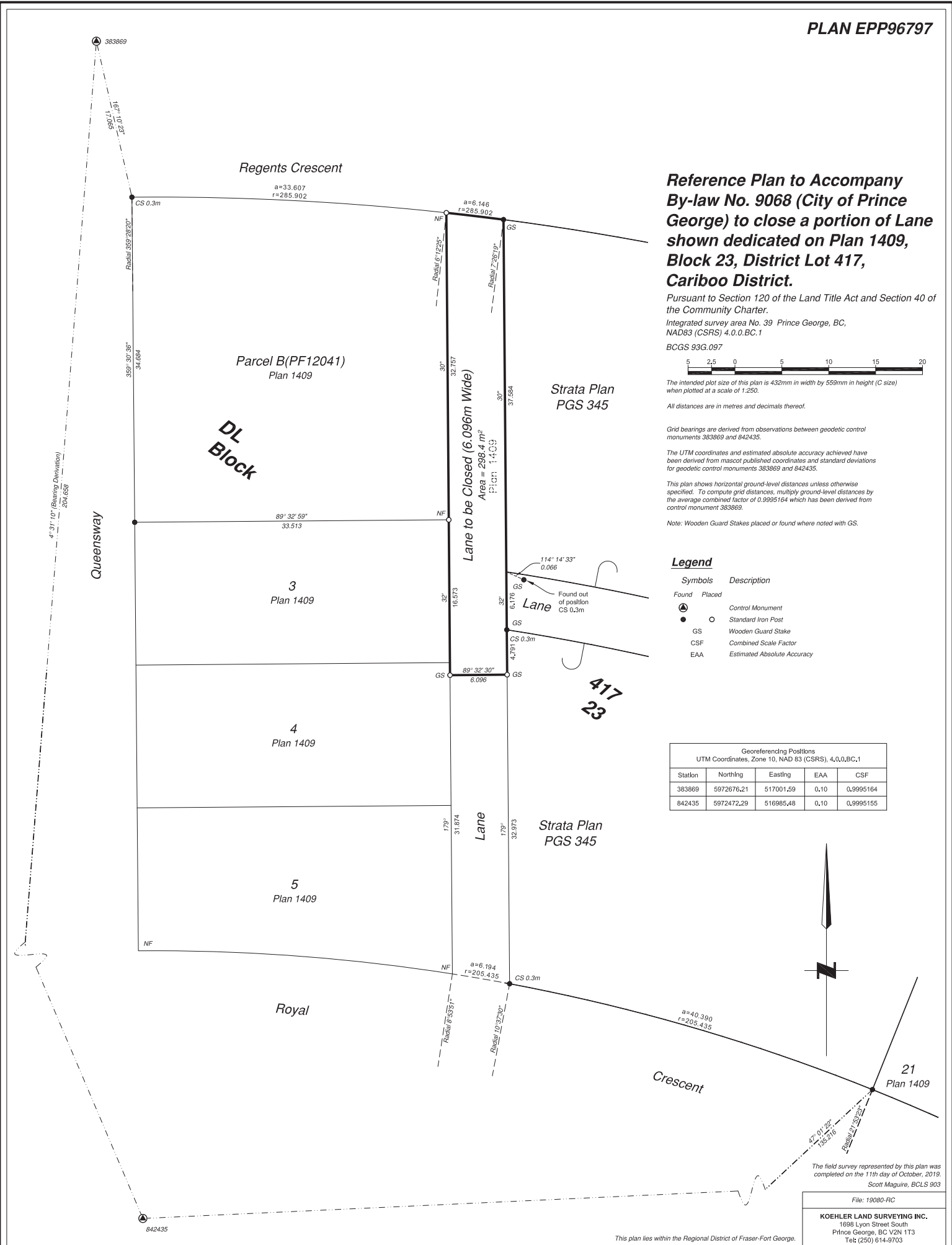
This plan shows horizontal ground-level distances unless otherwise specified. To compute grid distances, multiply ground-level distances by the average combined factor of 0.9995164 which has been derived from control monument 383869.

Note: Wooden Guard Stakes placed or found where noted with GS.

**Legend**

Found	Placed	Description
⊙	⊙	Control Monument
●	○	Standard Iron Post
GS	GS	Wooden Guard Stake
CSF	CSF	Combined Scale Factor
EAA	EAA	Estimated Absolute Accuracy

Georeferencing Positions				
UTM Coordinates, Zone 10, NAD 83 (CSRS), 4.0.0.BC.1				
Station	Northing	Easting	EAA	CSF
383869	5972676.21	517001.59	0.10	0.9995164
842435	5972472.29	516985.48	0.10	0.9995155



The field survey represented by this plan was completed on the 11th day of October, 2019.  
Scott Maguire, BCLS 903

File: 19080-RC  
**KOEHLER LAND SURVEYING INC.**  
1098 Lyon Street South  
Prince George, BC V2N 1T3  
Tel: (250) 614-9703

This plan lies within the Regional District of Fraser-Fort George.