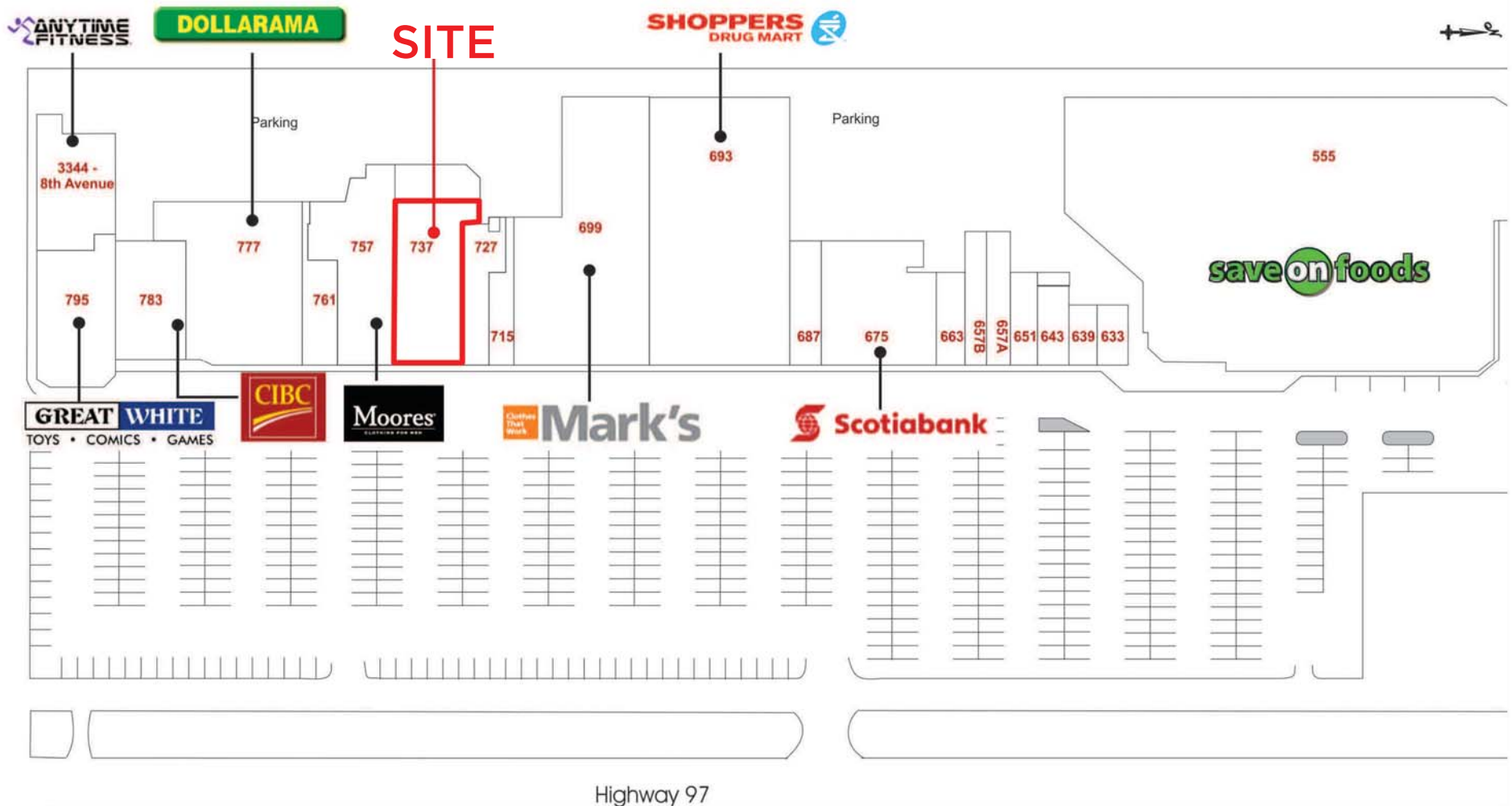


SPRUCELAND SHOPPING CENTRE

Prince George, BC



BC CANNABIS STORES



**LIQUOR
DISTRIBUTION
BRANCH**



**Professional.
Experienced.
Responsible.**

**With nearly 100 years of
experience retailing liquor
products, we know what it
means to be a good neighbour.**

Purpose

To make high-quality cannabis products and education available to all customers – from the discerning to the new – through a responsible retail channel that provides expert and friendly service.

SOCIAL RESPONSIBILITY

Every decision is made with a lens that prioritizes public health and safety.

SERVICE

We know our customers intimately and we are highly knowledgeable about the products we sell.

PEOPLE

We are intensely curious, deeply passionate about this space, and nimble, digital thinkers.

INTEGRITY

We always do the right thing and live our values every day, in every role, in every situation.

RESPECT

We work together as a cohesive team and recognize the unique talents of each individual.

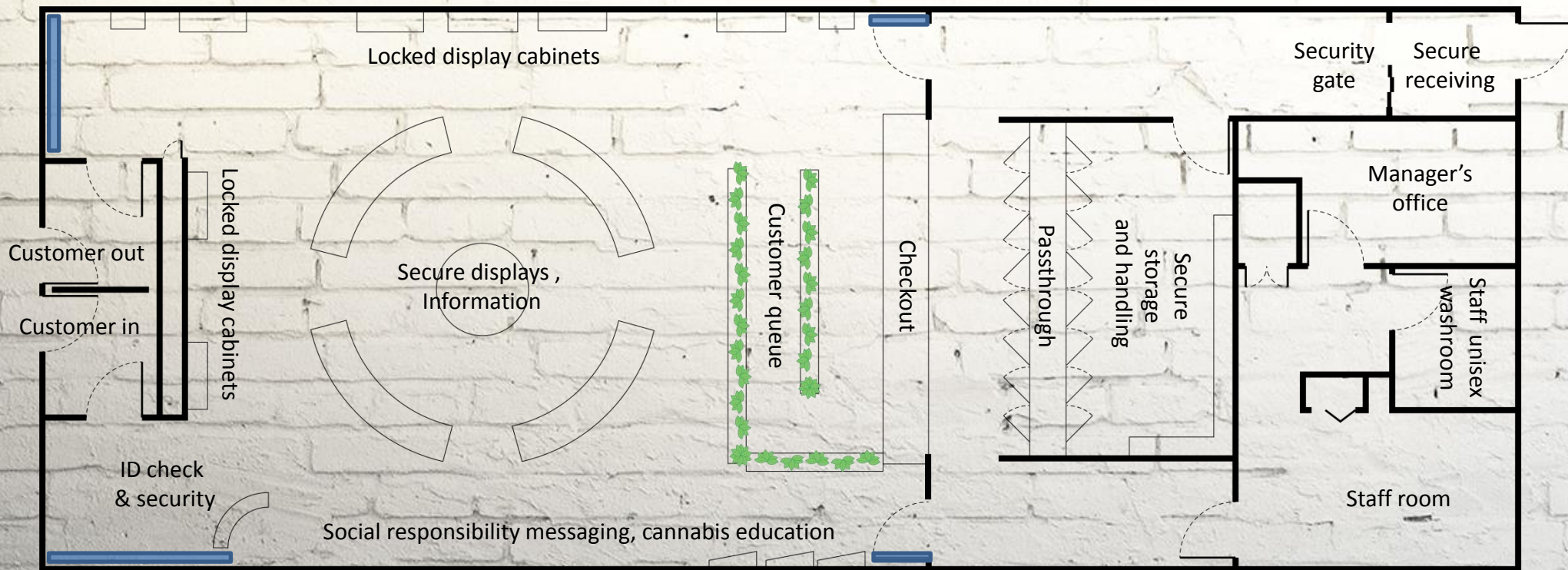
CONTINUOUS IMPROVEMENT


We are agile and quick; we take initiative to fill gaps and propose solutions.

Storefront



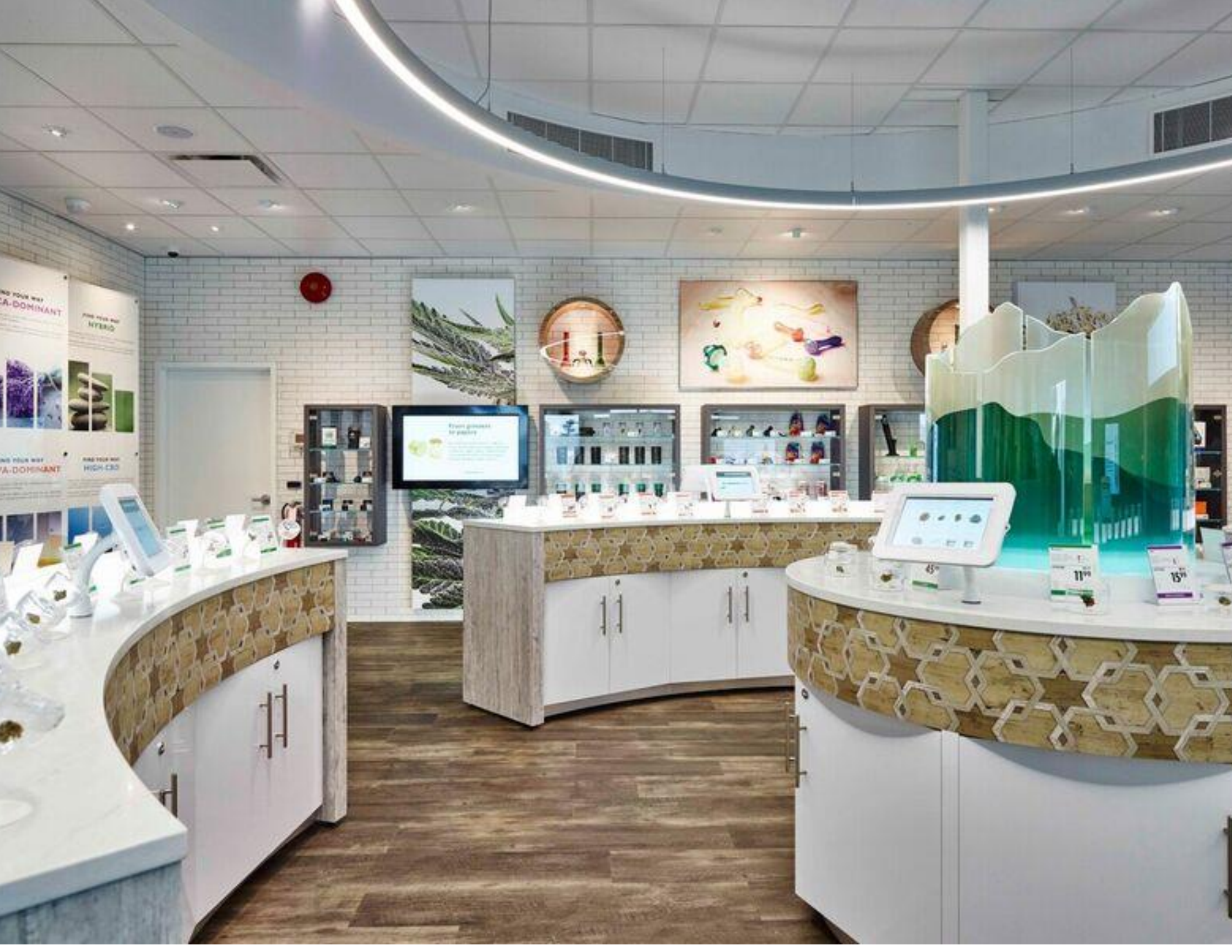
Concept Floorplan:



 = Social responsibility signage

Store interior





Before You Buy

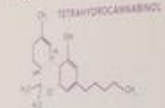
Plant Anatomy

Plant Types

CANNABIS: AN INTRODUCTION THC & CBD

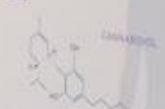
Cannabis contains two main compounds, THC and CBD, which are responsible for its psychoactive effects. THC is the compound that gives cannabis its "high" and is also responsible for its medicinal properties. CBD is the compound that gives cannabis its "calming" effects and is also responsible for its medicinal properties.

THC



- The most researched cannabinoid
- Responsible for the high and psychoactive effects
- THC has been found to have a variety of effects, including:
 - Reducing pain and inflammation
 - Improving appetite
 - Reducing nausea and vomiting
 - Improving sleep
 - Reducing anxiety and depression
- The concentration of THC in cannabis is typically between 5% and 30%
- THC is responsible for the psychoactive effects of cannabis
- Cannabis that contains THC is typically referred to as "marijuana"

CBD



- The second most researched cannabinoid
- CBD has been found to have a variety of effects, including:
 - Reducing pain and inflammation
 - Improving appetite
 - Reducing nausea and vomiting
 - Improving sleep
 - Reducing anxiety and depression
- The concentration of CBD in cannabis is typically between 5% and 30%
- CBD is responsible for the medicinal effects of cannabis
- Cannabis that contains CBD is typically referred to as "hemp"

Did you know...

Did you know that cannabis is a member of the hemp family? It's a plant that has been used for thousands of years for its medicinal properties. It's also a plant that has been used for its psychoactive effects. Cannabis is a plant that has many uses and is a member of the hemp family.

BC CANNABIS STORES
1-800-367-0000
www.bccannabisstores.ca

CANNABIS: AN INTRODUCTION

Terpenes

Terpenes are chemicals that are created and stored in the trichomes of the cannabis plant, along with cannabinoids such as THC and CBD. Terpenes give cannabis its distinctive aroma and cannabis users have indicated that terpenes are sometimes associated with various effects. The exact effects of terpenes on their own, and within cannabis, are currently unknown but the following descriptions may help you navigate our product assortment.


Remember, what works for others may not work for you. Educating yourself and cautious experimentation will help you find your way.



- **Caryophyllene**
Balancing. Also found in cloves, cinnamon, and black pepper.
- **Bisabolol**
Calming. Also found in chamomile, sage, and calendula.
- **Humulene**
Musky. Also found in hops, malt, and beer.
- **Myrcene**
Musky. Also found in lemongrass, bay leaves, and mangoes.
- **Limonene**
Citrusy. Also found in lemons, oranges, and grapefruit.
- **Linalool**
Calming. Also found in lavender, roses, and neroli.
- **Borneol**
Soothing. Also found in camphor, thyme, and cinnamon.
- **Geraniol**
Balancing. Also found in roses, citronella, and geraniums.
- **Eucalyptol**
Soothing. Also found in eucalyptus, mint, and tea tree oil.
- **Terpinolene**
Soothing. Also found in grapefruit, orange, and lemon.



Store operations

- 
- Store entranceways will have a counter for a two ID-check policy to prevent minors from entering the store.
 - Store staff and in-store material will create a safe and informed customer experience.
 - Digital signage and take-away brochures help educate customers of potential risks associated with cannabis use, supporting our mission of social responsibility (SR).
 - Products are kept behind the checkout in an employee-only area of the store, out of sight from minors passing by the front of the store.

Proven track record of public service and accountability that will carry over to cannabis

- Our strict “ID Under 30” policy in BC Liquor Stores is a strong contributing factor to our successful compliance record. For cannabis, for proof of age, all customers will be required to show two pieces of ID.
- Responsible consumption awareness programs in stores and in our communities like **Dry Grad** and **Get Home Safe** protect young people and their community.
- Our at-the-till charitable collections and employee contributions raise nearly \$1 million for local communities annually.
- We thrive as an environmental leader through responsible waste management.



**START
LOW,
GO
SLOW.**

For the safest experience,
start with products that are
low in THC.

BC CANNABIS STORES

bccannabisstores.com

A reputable place to work.

We take pride in being named one of BC's Top Employers time and time again.

- Mandatory criminal background checks are performed on all employees.
- Comprehensive product knowledge and customer service training are integral to the cannabis consultant onboarding experience.
- As with liquor, we will mandate a Serving It Right equivalent certification for all cannabis consultants.
- Each store will have a Store Manager, Assistant Store Manager, and Cannabis Consultants.





Safety and security

Customer, employee and community safety is paramount.

- Intruder and fire monitoring systems
- Interior and exterior camera surveillance
- Accessories will be locked in tempered glass display cases.
- A secure storage room that will require access cards to enter.
- Durable and reliable commercial-grade doors and locks.
- Smash-resistant windows.
- Product will not incinerated or disposed on-premise.

We are committed to working with local governments and local law enforcement agencies



Accountable. Partners.



**LIQUOR
DISTRIBUTION
BRANCH**

CONTACT
Kerri Lore
Director of Policy
kerri.lore@bcldb.com
604-252-3196

CONTACT
Mark Long
A/Director, Real Estate
mark.long@bcldb.com
604-252-3113

October 5, 2018

Erin McEwan
Liquor Distribution Branch
2625 Rupert Street, Vancouver BC V5M 3T5

Dear Ms. McEwan:

Re: Non-Role of the Liquor and Cannabis Regulation Branch in the licensing of public stores.

This letter is to confirm that public stores that are established and operated by the Liquor Distribution Branch (LDB) do not require a licence from and are not regulated by Liquor and Cannabis Regulation Branch.

Under the *Cannabis Control and Licensing Act*, private retail stores may not operate without a licence issued by the general manager, but public cannabis stores are authorized under different legislation, the *Cannabis Distribution Act*, and do not require a licence. LDB should work directly with local governments that are interested in having public cannabis stores in their jurisdictions.

For information on the Liquor and Cannabis Regulation Branch, please refer to:
<https://www2.gov.bc.ca/gov/content/employment-business/business/liquor-regulation-licensing>

The guides below are intended to help local governments and Indigenous nations understand their role in the cannabis retail store licence application process. That role involves gathering the views of those potentially affected by the location of a private retail store and providing a recommendation to the General Manager. Please note that these guides may be updated from time to time.

https://www2.gov.bc.ca/assets/gov/employment-business-and-economic-development/business-management/liquor-regulation-licensing/documents/local_government_role_in_licensing_cannabis_retail_stores.pdf

https://www2.gov.bc.ca/assets/gov/employment-business-and-economic-development/business-management/liquor-regulation-licensing/documents/indigenous_nation_role_in_licensing_cannabis_retail_stores.pdf

.../2

If you have any questions or concerns, please do not hesitate to contact me at 778 974-2347 or Suzanne.Bell@gov.bc.ca.

Yours sincerely,

A handwritten signature in dark ink, appearing to read 'Suzanne Bell', written in a cursive style.

Suzanne N. Bell
Deputy General Manager
Licensing and Local Government Liaison
Liquor Control & Licensing Branch

cc: Joshua Huska, Licensing Manager
Julia Bates, Licensing Manager