

CITY OF PRINCE GEORGE
BYLAW NO. 9056, 2019

A Bylaw of the City of Prince George to permanently close a portion of road located near 1357 PG Pulpmill Road to remove its highway dedication for the purpose of future disposal of the lands.

WHEREAS the Council of the City of Prince George deems it desirable that an approximate 0.50 hectares of road dedicated on Plan 14534, District Lot 823, Cariboo District, as shown on Reference Plan EPP95003, be closed to traffic, and that the highway dedication thereof be removed;

AND WHEREAS, in accordance with section 40 of the *Community Charter*, notice of intention to adopt this bylaw has been delivered, posted and published, and an opportunity has been provided for persons who consider they are affected by this bylaw to make representations to Council;

NOW THEREFORE the Council of the City of Prince George, in open meeting assembled, **ENACTS AS FOLLOWS:**

1. That the portion of road shown dedicated on Plan 14534, District Lot 823, Cariboo District, as shown outlined in bold black on Reference Plan EPP95003, attached hereto as Appendix "A" and forming part of this Bylaw, is closed to traffic.
2. That the dedication of the portion of road dedicated by Plan 14534, District Lot 823, Cariboo District, as shown outlined in bold black on Reference Plan EPP95003, attached hereto as Appendix "A" and forming part of this Bylaw, is removed.
3. The Mayor and Corporate Officer are hereby empowered to do all things necessary to give effect to this Bylaw.
4. This Bylaw shall come into full force and take effect upon its adoption and shall be filed with the Registrar of the applicable Land Title Office.
5. This Bylaw may be cited for all purposes as "City of Prince George 1357 PG Pulpmill Road, Road Closure Bylaw No. 9056, 2019".

READ A FIRST TIME THIS DAY OF , 2019.

READ A SECOND TIME THIS DAY OF , 2019.

First two readings passed by a decision of Member of City Council present
and eligible to vote.

READ A THIRD TIME THIS DAY OF , 2019.

Third reading passed by a decision of Member of City Council present and
eligible to vote.

Certified correct as passed third reading this day of , 2019.

CORPORATE OFFICER OF
THE CITY OF PRINCE GEORGE

ADOPTED THIS DAY OF , 2019, BY A
DECISION OF ALL MEMBERS OF CITY COUNCIL PRESENT AND
ELIGIBLE TO VOTE.

MAYOR

CORPORATE OFFICER

APPENDIX A

REFERENCE PLAN TO ACCOMPANY BY-LAW NUMBER 9056 (PRINCE GEORGE) TO CLOSE A PORTION OF ROAD SHOWN DEDICATED ON PLAN 14534, DISTRICT LOT 823, CARIBOO DISTRICT.

PLAN EPP95003

PURSUANT TO SECTION 120 OF THE LAND TITLE ACT AND SECTION 40 OF THE COMMUNITY CHARTER

THIS PLAN LIES WITHIN INTEGRATED SURVEY AREA
No. 38 PRINCE GEORGE, BC, NADES (CSRS) 4.0.0.BC.1
BOGS 92Q.027

THE INTENDED PLOT SIZE OF THIS PLAN IS 300mm IN WIDTH BY 420mm IN HEIGHT (1:1000) WHEN PLOTTED AT A SCALE OF 1:1000.

ALL DISTANCES ARE IN METRES AND DECIMALS THEREOF.

GRID COORDINATES ARE DERIVED FROM OBSERVATIONS TO GEODETIC CONTROL MONUMENTS 8541588 AND 8541591.

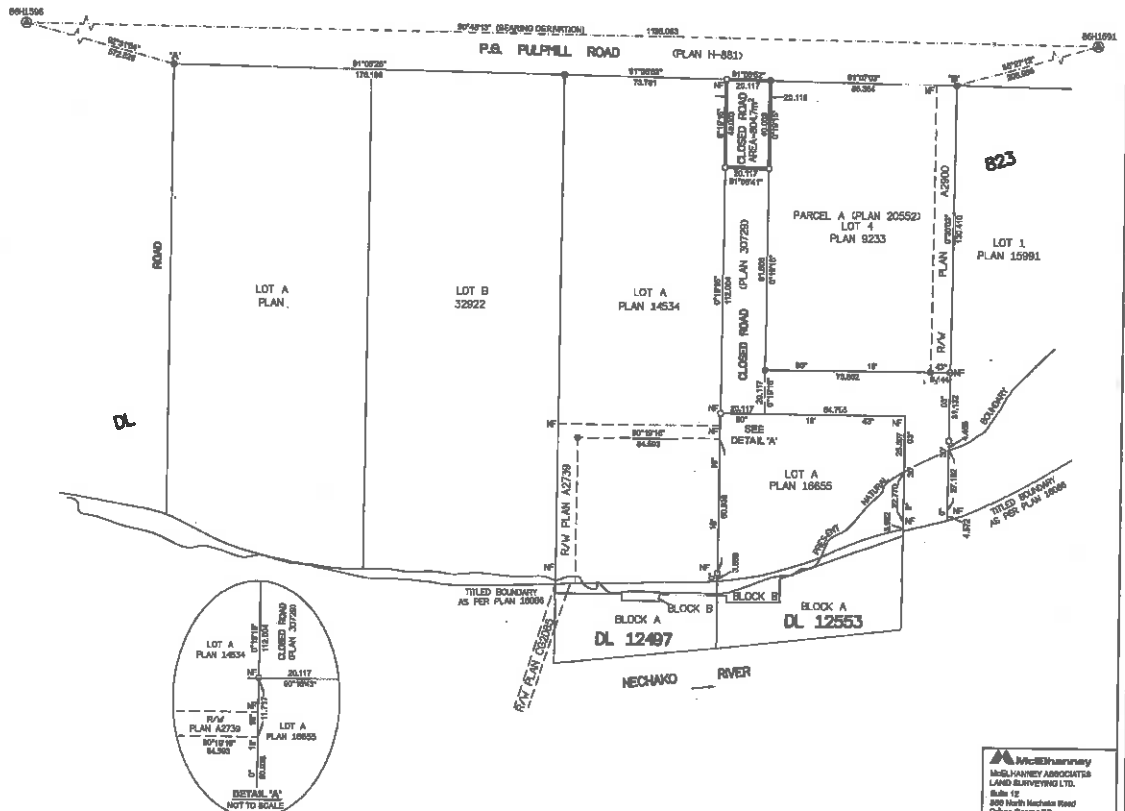
THE UTM COORDINATES AND ESTIMATED ABSOLUTE ACCURACY ACHIEVED HAVE BEEN DERIVED FROM MAGNETIC COORDINATES AND STANDARD DEVIATIONS FOR GEODETIC CONTROL MONUMENT 8541591.

THIS PLAN SHOWS HORIZONTAL DISTANCES UNLESS OTHERWISE SPECIFIED. TO COMPUTE GRID DISTANCES MULTIPLY HORIZONTAL DISTANCES BY THE COMBINED FACTOR OF 0.99999 WHICH HAS BEEN DERIVED FROM GEODETIC CONTROL MONUMENT 8541591.

LEGEND

SYMBOLS	DESCRIPTION
FOUND PLACED	
⊙	CONTROL MONUMENT
○	STANDARD IRON POST
CS*	COMBINED SCALE FACTOR
EAA	ESTIMATED ABSOLUTE ACCURACY

GEOREFERENCING POSITIONS				
UTM COORDINATES, ZONE 18, NAD 83 (CSRS), 4.0.0.BC.1				
STATION	NORTHING	EASTING	EAA	CS*
PL 10 W	867772.48	817279.11	0.10	0.999991
PL 10 E	867772.44	817278.33	0.10	0.999991



THIS FIELD SURVEY REPRESENTED BY THIS PLAN WAS COMPLETED
ON THE 19th DAY OF AUGUST, 2018
BRUNNAC, DOBRYCH, POLS, TOS
THIS PLAN LIES WITHIN THE REGIONAL DISTRICT OF FRASER-FORT GEORGE.

APPROVED
AND HANDED
LAND SURVEYING LTD.
Suite 10
800 North Nechako Road
Prince George BC
Canada V2C 6A3
Tel: 250 681 2228
File No. 2599-074-02