

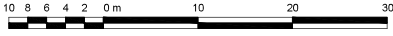
**REFERENCE PLAN OF CONSOLIDATION OF
CLOSED ROAD, PLAN EPP125477; AND
LOT 20, PLAN 19954; ALL IN DISTRICT LOT 2101,
CARIBOO DISTRICT**

PLAN EPP125478

PURSUANT TO SECTION 100(1)(b) OF THE LAND TITLE ACT

THIS PLAN LIES WITHIN INTEGRATED SURVEY AREA NO. 39
PRINCE GEORGE, BC, NAD83 (CSRS) 4.0.0.BC.1

BCGS 93G.096



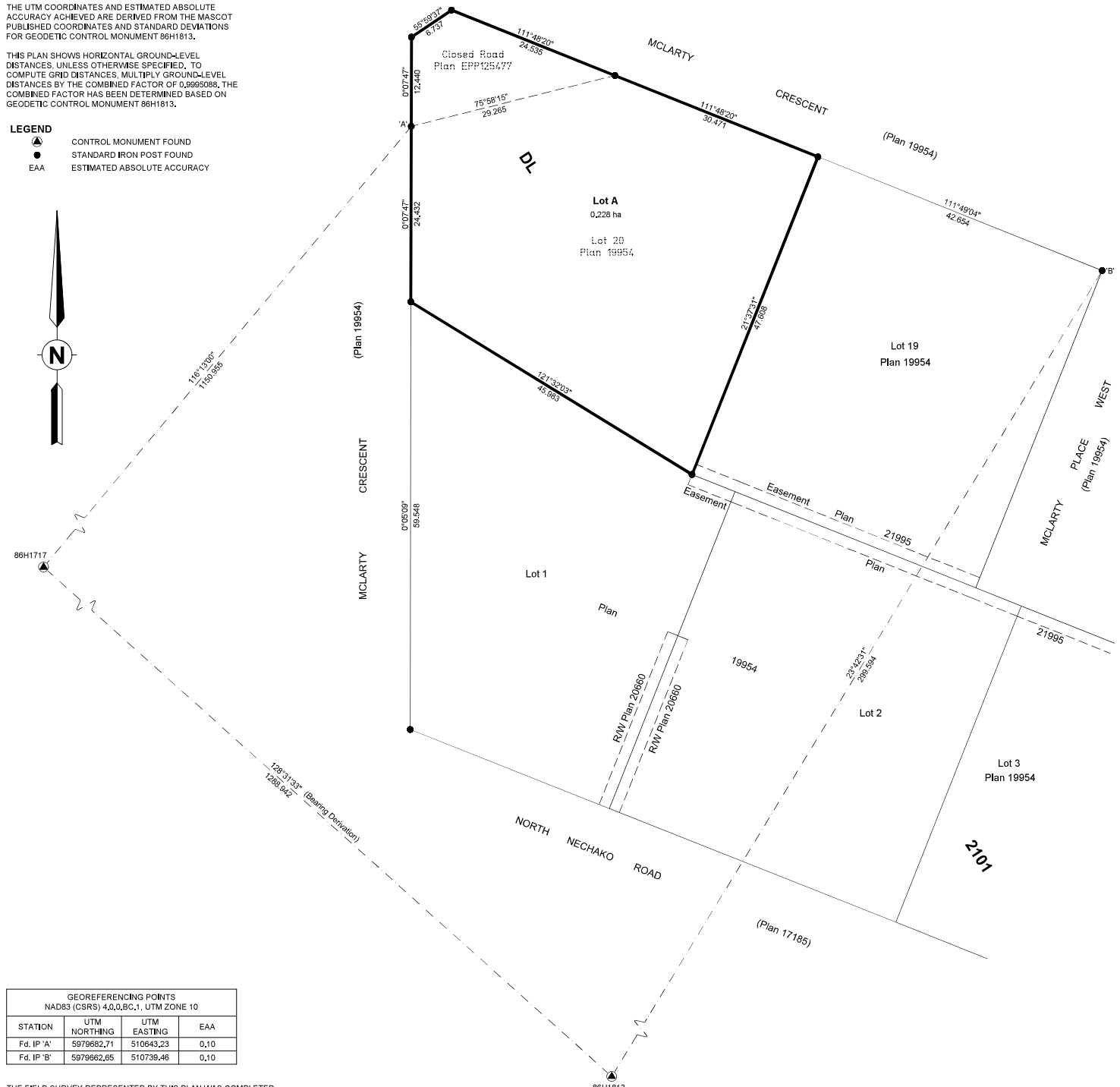
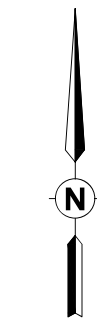
ALL DISTANCES ARE IN METRES AND DECIMALS THEREOF
THE INTENDED PLOT SIZE OF THIS PLAN IS 432 mm IN WIDTH BY 560 mm
IN HEIGHT (C-SIZE) WHEN PLOTTED AT A SCALE OF 1:400

GRID BEARINGS ARE DERIVED FROM OBSERVATIONS
BETWEEN GEODETIC CONTROL MONUMENTS 86H1813
AND 86H1717 ARE REFERRED TO THE CENTRAL MERIDIAN
OF UTM ZONE 10 (123° WEST LONGITUDE).

THE UTM COORDINATES AND ESTIMATED ABSOLUTE
ACCURACY ACHIEVED ARE DERIVED FROM THE MASCOT
PUBLISHED COORDINATES AND STANDARD DEVIATIONS
FOR GEODETIC CONTROL MONUMENT 86H1813.

THIS PLAN SHOWS HORIZONTAL GROUND-LEVEL
DISTANCES, UNLESS OTHERWISE SPECIFIED, TO
COMPUTE GRID DISTANCES. MULTIPLY GROUND-LEVEL
DISTANCES BY THE COMBINED FACTOR OF 0.9995088, THE
COMBINED FACTOR HAS BEEN DETERMINED BASED ON
GEODETIC CONTROL MONUMENT 86H1813.

- LEGEND**
- ▲ CONTROL MONUMENT FOUND
 - STANDARD IRON POST FOUND
 - EAA ESTIMATED ABSOLUTE ACCURACY



GEOREFERENCING POINTS NAD83 (CSRS) 4.0.0.BC.1, UTM ZONE 10			
STATION	UTM NORTHING	UTM EASTING	EAA
Fd. IP 'A'	5979682,71	510643,23	0,10
Fd. IP 'B'	5979682,65	510739,46	0,10

THE FIELD SURVEY REPRESENTED BY THIS PLAN WAS COMPLETED
ON THE ___ DAY OF ___, ___

THIS PLAN LIES WITHIN THE REGIONAL DISTRICT
OF FRASER-FORT GEORGE.