

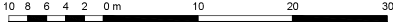
REFERENCE PLAN OF ROAD CLOSURE TO ACCOMPANY BY-LAW No. 9346, 2022 (PRINCE GEORGE, BC) CLOSING A PORTION OF ROAD SHOWN DEDICATED ON PLAN 19954, DL 2101, CARIBOO DISTRICT

PLAN EPP125477

PURSUANT TO SECTION 120 OF THE LAND TITLE ACT AND SECTION 40 OF THE COMMUNITY CHARTER

THIS PLAN LIES WITHIN INTEGRATED SURVEY AREA NO. 39 PRINCE GEORGE, BC, NAD83 (CSRS) 4.0.0.BC.1

BCGS 93G,096



ALL DISTANCES ARE IN METRES AND DECIMALS THEREOF

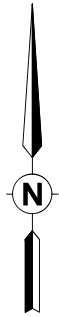
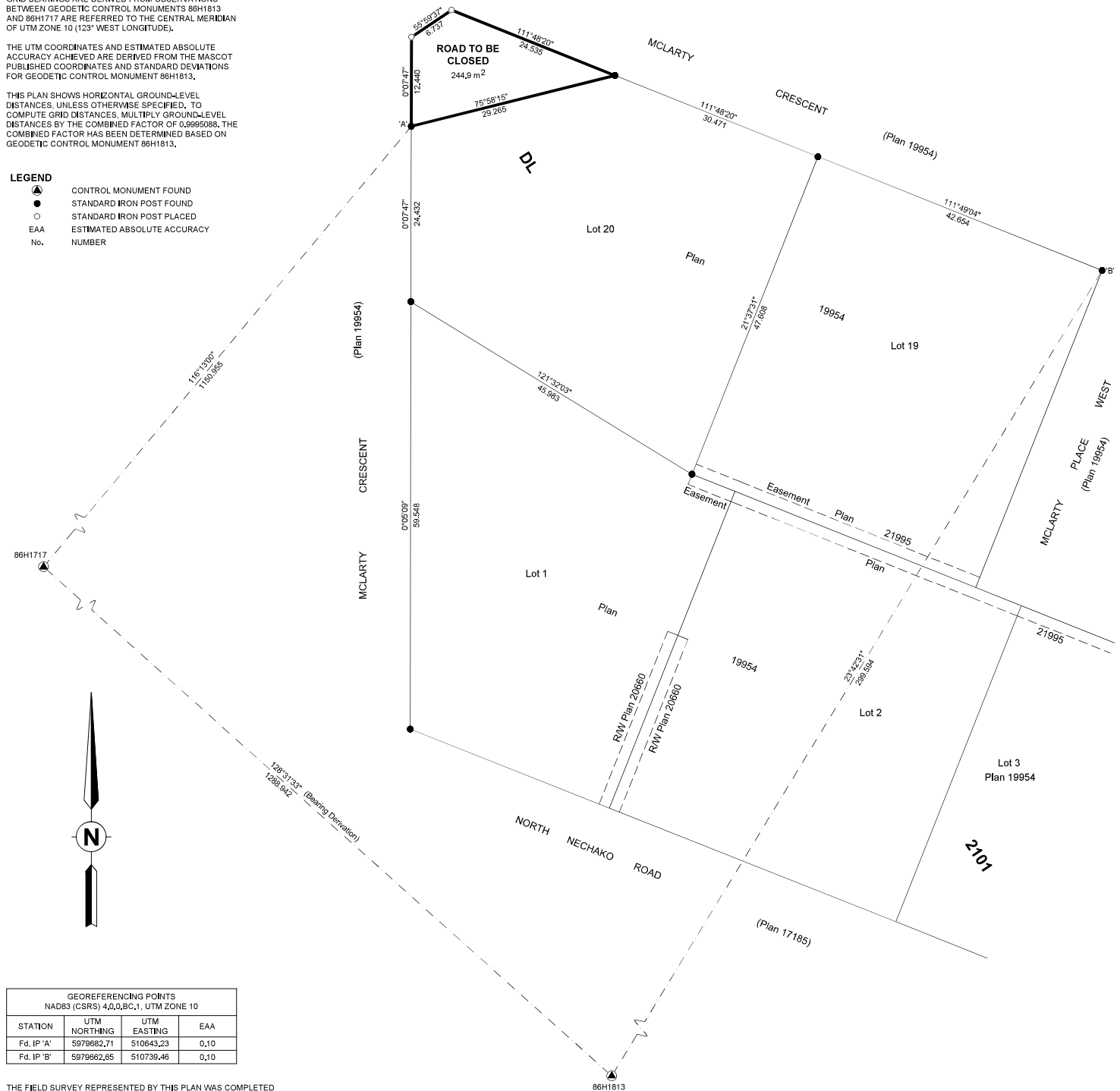
THE INTENDED PLOT SIZE OF THIS PLAN IS 432 mm IN WIDTH BY 560 mm IN HEIGHT (C-SIZE) WHEN PLOTTED AT A SCALE OF 1:400

GRID BEARINGS ARE DERIVED FROM OBSERVATIONS BETWEEN GEODETIC CONTROL MONUMENTS 86H1813 AND 86H1717 ARE REFERRED TO THE CENTRAL MERIDIAN OF UTM ZONE 10 (123° WEST LONGITUDE).

THE UTM COORDINATES AND ESTIMATED ABSOLUTE ACCURACY ACHIEVED ARE DERIVED FROM THE MASCOT PUBLISHED COORDINATES AND STANDARD DEVIATIONS FOR GEODETIC CONTROL MONUMENT 86H1813.

THIS PLAN SHOWS HORIZONTAL GROUND-LEVEL DISTANCES, UNLESS OTHERWISE SPECIFIED, TO COMPUTE GRID DISTANCES. MULTIPLY GROUND-LEVEL DISTANCES BY THE COMBINED FACTOR OF 0.9995088. THE COMBINED FACTOR HAS BEEN DETERMINED BASED ON GEODETIC CONTROL MONUMENT 86H1813.

- LEGEND**
- ▲ CONTROL MONUMENT FOUND
 - STANDARD IRON POST FOUND
 - STANDARD IRON POST PLACED
 - EAA ESTIMATED ABSOLUTE ACCURACY
 - No. NUMBER



| GEOREFERENCING POINTS NAD83 (CSRS) 4.0.0.BC.1, UTM ZONE 10 | | | |
|---|--------------|-------------|------|
| STATION | UTM NORTHING | UTM EASTING | EAA |
| Fd. IP 'A' | 5979682,71 | 510643,23 | 0,10 |
| Fd. IP 'B' | 5979682,65 | 510739,46 | 0,10 |

THE FIELD SURVEY REPRESENTED BY THIS PLAN WAS COMPLETED ON THE 3rd DAY OF NOVEMBER, 2022
SHAUNA C. GOERTZEN, BCLS 798

THIS PLAN LIES WITHIN THE REGIONAL DISTRICT OF FRASER-FORT GEORGE.

| | | |
|--|---|--|
| | McEhannay Associates Land Surveying Ltd. | PLAN ID. 23410690500-VL-REFE-001 |
| | 12-556 North Nechako Road Prince George, BC V2K 1A1 T250-561-2229 | |