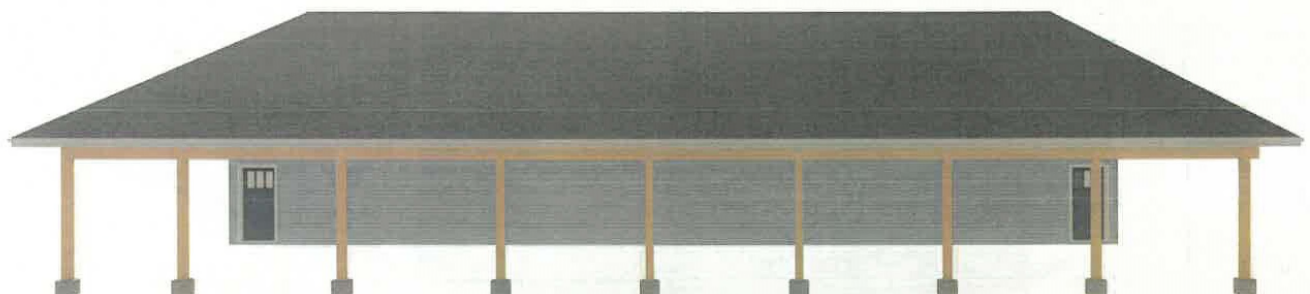
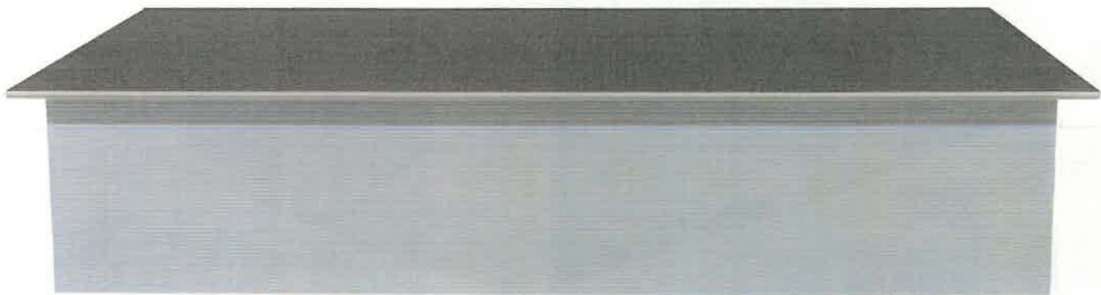
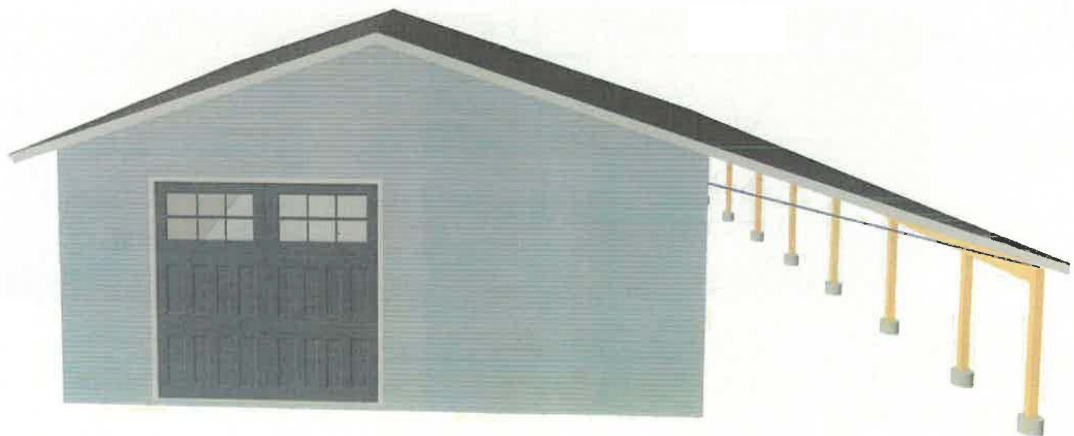
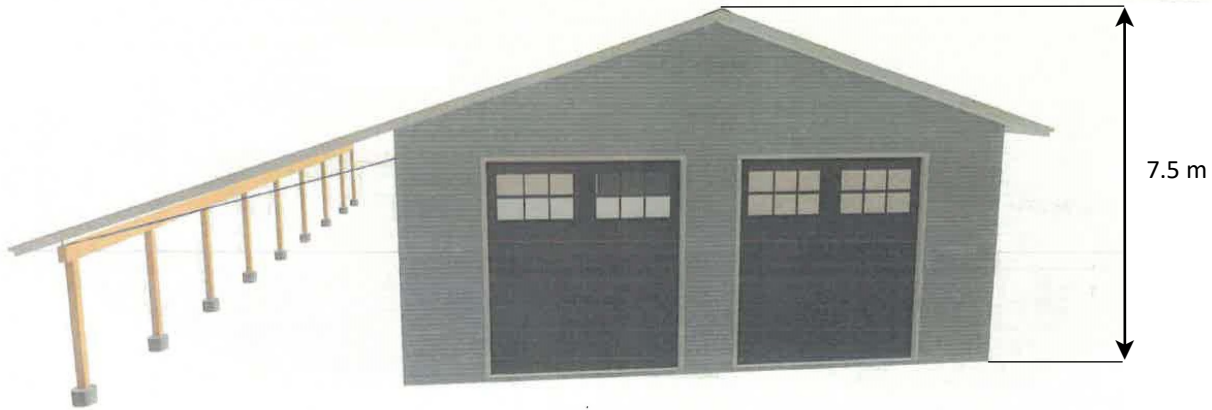


Vary Section 9.6.6 2. of City of Prince George Zoning Bylaw No. 7850, 2007 as follows:  
a) Increase the maximum height of accessory development from 6.0 m to 7.5 m



**Exhibit "A" to VP100635**

Lot B, DL 2423, CD, Plan EPP35822



**CITY OF PRINCE GEORGE**