

CITY OF PRINCE GEORGE
BYLAW NO. 9240, 2021

A Bylaw of the City of Prince George to permanently close a portion of road located adjacent to 1510 Taylor Drive and to remove its road dedication for the purpose of future disposal of the lands.

WHEREAS the Council of the City of Prince George deems it desirable that an approximate 136.5 m² (square metres) of road dedicated on Plan 1268, District Lot 343, Cariboo District, as shown on Reference Plan EPP116076, adjacent to the property legally described as Lot A, District Lot 343, Cariboo District, Plan 8944 be closed to traffic, and that the road dedication thereof be removed;

AND WHEREAS, in accordance with section 40 of the *Community Charter*, notice of intention to adopt this Bylaw has been delivered, posted and published, and an opportunity has been provided for persons who consider they are affected by this Bylaw to make representations to Council;

NOW THEREFORE the Council of the City of Prince George, in open meeting assembled, **ENACTS AS FOLLOWS:**

1. That the portion of road dedicated on Plan 1268, District Lot 343, Cariboo District, as shown outlined in bold black on Reference Plan EPP116076, adjacent to the property legally described as Lot A, District Lot 343, Cariboo District, Plan 8944, attached hereto as Appendix "A" and forming part of this Bylaw, is closed to traffic.
2. That the portion of road dedicated on Plan 1268, District Lot 343, Cariboo District, as shown outlined in bold black on Reference Plan EPP116076, adjacent to the property legally described as Lot A, District Lot 343, Cariboo District, Plan 8944, attached hereto as Appendix "A" and forming part of this Bylaw, is removed.
3. The Mayor and Corporate Officer are hereby empowered to do all things necessary to give effect to this Bylaw.
4. This Bylaw shall come into full force and take effect upon its adoption and shall be filed with the Registrar of the applicable Land Title Office.
5. This Bylaw may be cited for all purposes as "City of Prince George 1510 Taylor Drive Road Closure Bylaw No. 9240, 2021".

READ A FIRST TIME THIS **11TH** DAY OF **APRIL** , **2022.**


READ A SECOND TIME THIS **11TH** DAY OF **APRIL** , **2022.**

First two readings passed by a **UNANIMOUS** decision of Members of City Council present and eligible to vote.

READ A THIRD TIME THIS 9TH DAY OF MAY, 2022.


Third reading passed by a UNANIMOUS decision of Members of City Council present and eligible to vote.

Certified correct as passed third reading this 16TH day of MAY, 2022.


CORPORATE OFFICER OF
THE CITY OF PRINCE GEORGE

APPROVED BY THE MINISTER OF TRANSPORTATION AND INFRASTRUCTURE PURSUANT TO THE PROVISIONS OF SECTION 41(3) OF THE COMMUNITY CHARTER.

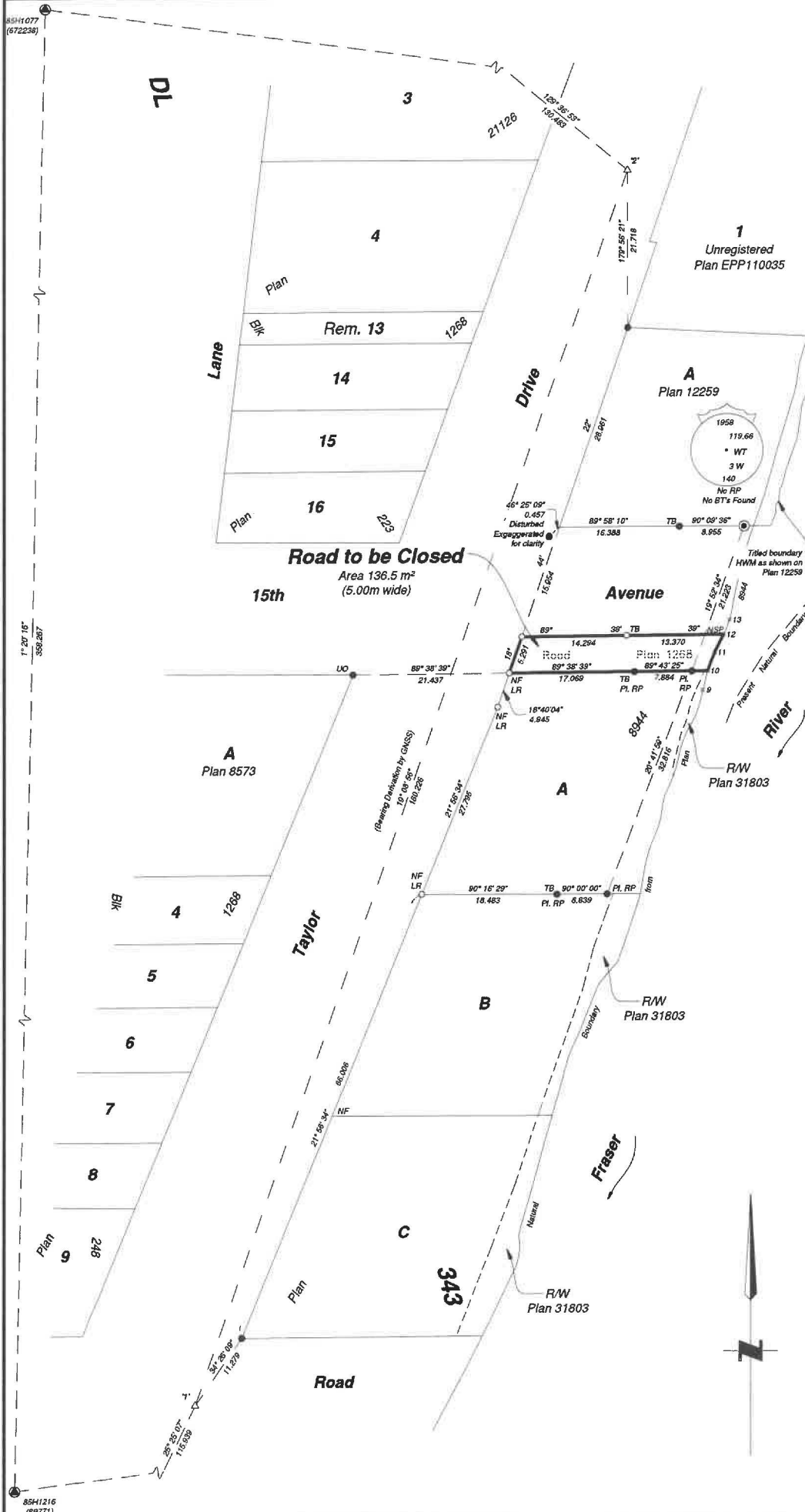
THIS 29TH DAY OF SEPTEMBER, 2022.


for MINISTER OF
TRANSPORTATION
AND INFRASTRUCTURE

ADOPTED THIS DAY OF, 2022,
BY A DECISION OF ALL MEMBERS OF CITY COUNCIL PRESENT AND
ELIGIBLE TO VOTE.

MAYOR

CORPORATE OFFICER



**Reference Plan to Accompany
By-Law No. 9240 (City of Prince
George) Closing a Portion of Road
Shown Dedicated on Plan 1268,
District Lot 343, Cariboo District**

Pursuant to Section 120 of the Land Title Act and Section 40 of the Community Charter

Integrated survey area No. 39 Prince George, BC,
NAD83 (CSRS) 4.0.0.BC.1

BCGS 93G.097



The intended plot size of this plan is 432mm in width by 559mm in height (C size) when plotted at a scale of 1:400.

All distances are in metres and decimals thereof.

Grid bearings are derived from GNSS observations and are referred to the central meridian of UTM Zone 10 North (123° west longitude).

This plan shows horizontal ground-level distances unless otherwise specified. To compute grid distances, multiply ground-level distances by the combined factor of 0.9985160 which has been derived by single point positioning techniques using the precise point positioning (PPP) services of Natural Resources Canada.

The UTM coordinates and estimated absolute accuracies shown on this plan are a result of an independent and accurate GNSS survey. Positions for Geodetic Control Monuments which are calculated from information on this plan may not agree with official published coordinates.

Note:
Some posts are exaggerated for clarity.

All posts placed have placed reference posts. All found posts have no found or placed reference posts unless otherwise noted.

Legend

Found	Placed	Description
●	○	Control Monument
●	○	Standard Concrete Post
●	○	Standard Iron Post
○	○	Traverse Hub
CSF		Combined Scale Factor
EAA		Estimated Absolute Accuracy
Bk		Block
UO		Unknown Origin
LR		Lost Re-established
HWM		High Water Mark
TB		Top of Bank
TNB		Titled Natural Boundary
NSP		Not Suitable to Post

Georeferencing Positions UTM Coordinates, Zone 10, NAD 83 (CSRS), 2002.0				
Station	Northing	Easting	EAA	CSF
1	5973485.49	517815.99	0.05	0.9995160
2	5973655.66	517875.08	0.05	0.9995158

Titled Natural Boundary of Fraser River (Plan 8944) UTM Coordinates, Zone 10, NAD 83 (CSRS), 2002.0			
Point #	Northing	Easting	Description
9	5973583.9	517885.4	TNB
10	5973586.6	517886.1	TNB
11	5973589.1	517887.1	TNB
12	5973591.6	517888.3	TNB
13	5973593.6	517889.2	TNB

The field survey represented by this plan was completed on the 29th day of October, 2021.

Albert Koehler, BCLS 974

This plan lies within the City of Prince George

This plan lies within the Regional District of Fraser-Fort George

File: 211110-21137-GRID-RC
KOEHLER LAND SURVEYING INC.
 674 2nd Avenue
 Prince George, BC V2L 3A2
 Tel: (250) 614-9703