

CITY OF PRINCE GEORGE
BYLAW NO. 9239, 2021

A Bylaw of the City of Prince George to permanently close a portion of road located adjacent to 5438 Shellburn Road and to remove its road dedication for the purpose of future disposal of the lands.

WHEREAS the Council of the City of Prince George deems it desirable that an approximate 478.5 m² (square metres) of road dedicated on Plan 27408, District Lot 954, Cariboo District, as shown on Reference Plan EPP115885, adjacent to the property legally described as Lot 1, District Lot 954, Cariboo District, Plan 27408, Except Plan 29844, be closed to traffic, and that the road dedication thereof be removed;

AND WHEREAS, in accordance with section 40 of the *Community Charter*, notice of intention to adopt this Bylaw has been delivered, posted and published, and an opportunity has been provided for persons who consider they are affected by this Bylaw to make representations to Council;

NOW THEREFORE the Council of the City of Prince George, in open meeting assembled, **ENACTS AS FOLLOWS:**

1. That the portion of road dedicated on Plan 27408, District Lot 954, Cariboo District, as shown outlined in bold black on the Reference Plan EPP115885, adjacent to the property legally described as Lot 1, District Lot 954, Cariboo District, Plan 27408, Except Plan 29844, attached hereto as Appendix "A" and forming part of this Bylaw, is closed to traffic.
2. That the portion of road dedicated on Plan 27408, District Lot 954, Cariboo District, as shown outlined in bold black on the Reference Plan EPP115885, adjacent to the property legally described as Lot 1, District Lot 954, Cariboo District, Plan 27408, Except Plan 29844, attached hereto as Appendix "A" and forming part of this Bylaw, is removed.
3. The Mayor and Corporate Officer are hereby empowered to do all things necessary to give effect to this Bylaw.
4. This Bylaw shall come into full force and take effect upon its adoption and shall be filed with the Registrar of the applicable Land Title Office.
5. This Bylaw may be cited for all purposes as "City of Prince George 5438 Shellburn Road Road Closure Bylaw No. 9239, 2021".

READ A FIRST TIME THIS 11TH DAY OF APRIL , 2022.

READ A SECOND TIME THIS 11TH DAY OF APRIL , 2022.

First two readings passed by a **UNANIMOUS** decision of Members of City Council present and eligible to vote.

READ A THIRD TIME THIS **9TH** DAY OF **MAY**, **2022**.

Third reading passed by a **UNANIMOUS** decision of Members of City Council present and eligible to vote.

Certified correct as passed third reading this **10TH** day of **MAY**, **2022**.


CORPORATE OFFICER OF
THE CITY OF PRINCE GEORGE

APPROVED BY THE MINISTER OF TRANSPORTATION AND INFRASTRUCTURE PURSUANT TO THE PROVISIONS OF SECTION 41(3) OF THE COMMUNITY CHARTER.

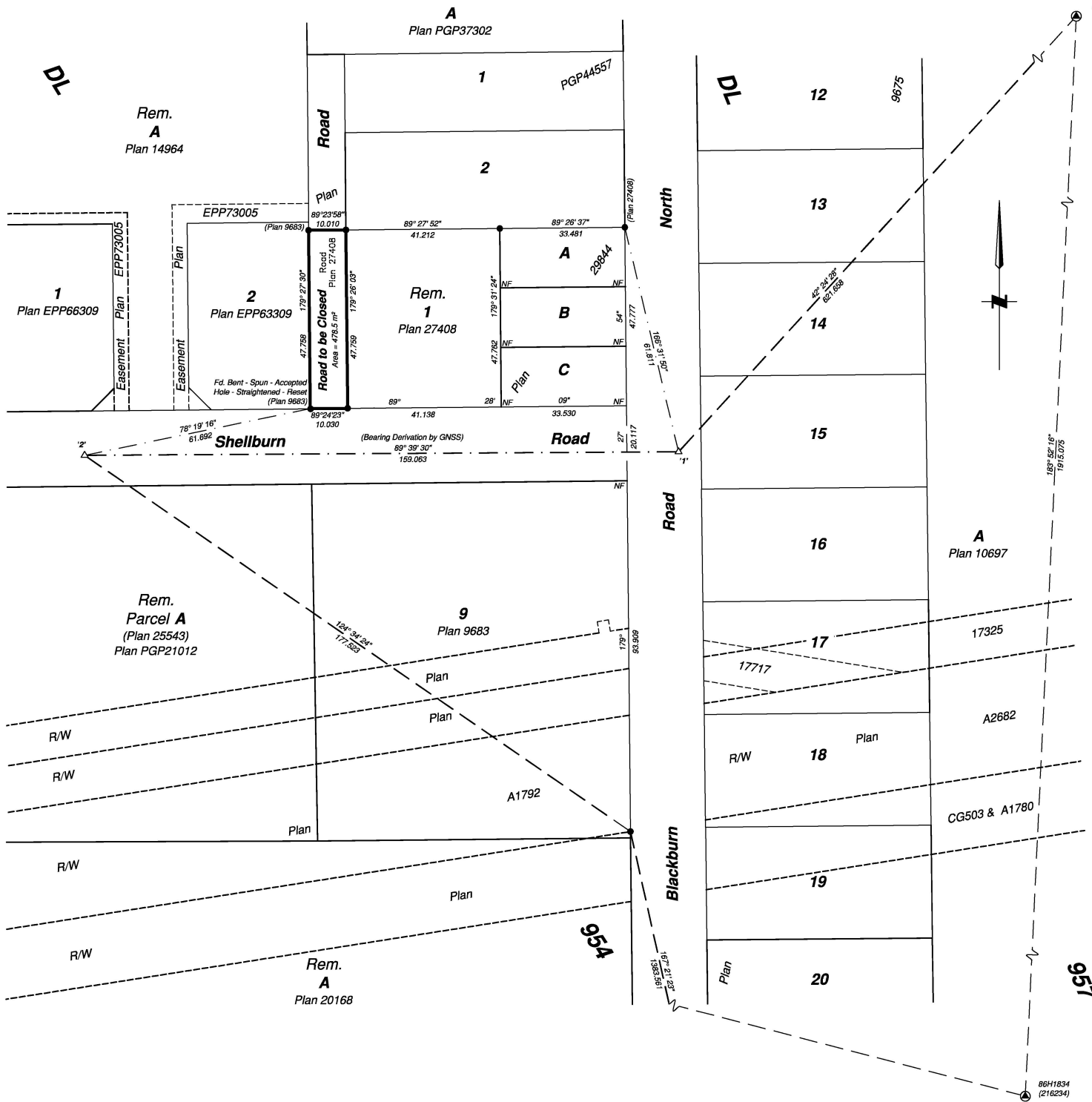
THIS **29TH** DAY OF **SEPTEMBER**, **2022**.


for MINISTER OF TRANSPORTATION
AND INFRASTRUCTURE

ADOPTED THIS _____ DAY OF _____, **2022**,
BY A _____ DECISION OF ALL MEMBERS OF CITY COUNCIL PRESENT AND
ELIGIBLE TO VOTE.

MAYOR

CORPORATE OFFICER



**Reference Plan to Accompany
By-Law No. 9239 (City of Prince
George) Cancelling Road Shown
Dedicated on Plan 27408, District
Lot 954, Cariboo District**

Pursuant to Section 120 of the Land Title Act and Section 40 of the Community Charter

Integrated survey area No. 39 Prince George, BC, NAD83 (CSRS) 4.0.0.BC.1

BCGS 93G.097



The intended plot size of this plan is 559mm in width by 432mm in height (C size) when plotted at a scale of 1:750.

All distances are in metres and decimals thereof.

Grid bearings are derived from GNSS observations and are referred to the central meridian of UTM Zone 10 North (123° west longitude).

This plan shows horizontal ground-level distances unless otherwise specified. To compute grid distances, multiply ground-level distances by the combined factor of 0.9995041 which has been derived by single point positioning techniques using the precise point positioning (PPP) services of Natural Resources Canada.

The UTM coordinates and estimated absolute accuracies shown on this plan are a result of an independent and accurate GNSS survey. Positions for Geodetic Control Monuments which are calculated from information on this plan may not agree with official published coordinates.

Note:
All found posts have reference posts found or placed unless otherwise noted.

Legend

- | Symbols | Description |
|---------|-----------------------------|
| Found | Placed |
| ⊙ | Control Monument |
| ● | Standard Iron Post |
| ○ | Standard Iron Post |
| △ | Traverse Hub |
| CSF | Combined Scale Factor |
| EAA | Estimated Absolute Accuracy |

Georeferencing Positions UTM Coordinates, Zone 10, NAD 83 (CSRS), 2002.0				
Station	Northing	Easting	EAA	CSF
1	5974234.34	523575.24	0.05	0.99950407
2	5974233.39	523416.25	0.05	0.99950378

The field survey represented by this plan was completed on the 4th day of October, 2021.

Albert Koehler, BCLS 974

This plan lies within the City of Prince George

This plan lies within the Regional District of Fraser-Fort George

File: 211112-20163-GRID-RC
KOEHLER LAND SURVEYING INC.
 1698 Lyon Street South
 Prince George, BC V2N 1T3
 Tel: (250) 614-9703