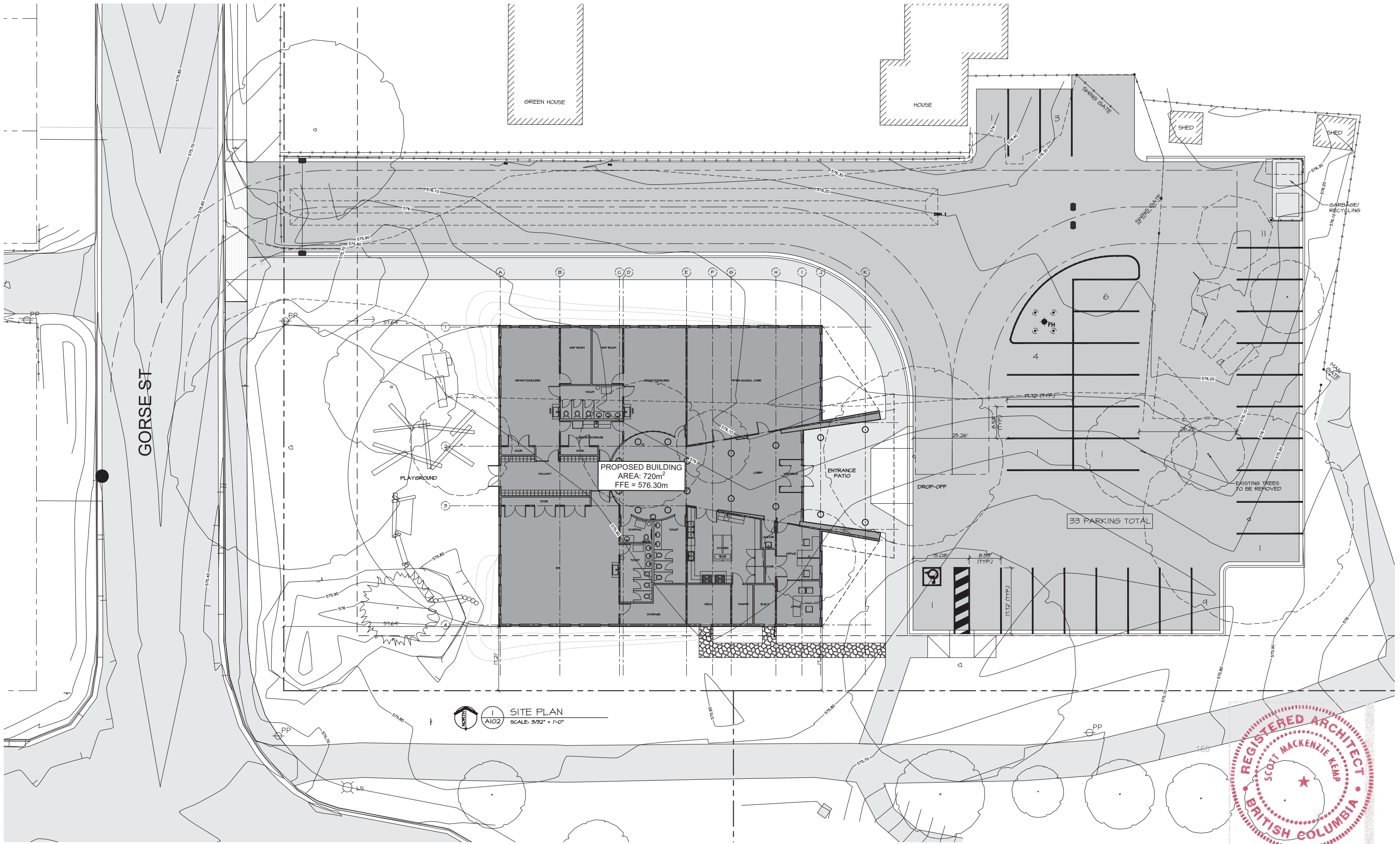


Lheidli T'enneh First Nation Daycare Centre

1950 Gorse Street, Prince George, BC

LEGAL ADDRESS: LT PCL X DL 343 PL 1792 REM (PL 1266)





Scott M. Kemp Architect

4427 River Road West, Ladner, BC V4K 1R9
P: (604) 786-8150 F: (604) 952-6021
scott@smkarchitect.com



1088 Great Street
Prince George, B.C. V2N 2K8
Phone: (250) 649-0561
Fax: (250) 649-0561
E-mail: info@idolprojects.com

TITLE:

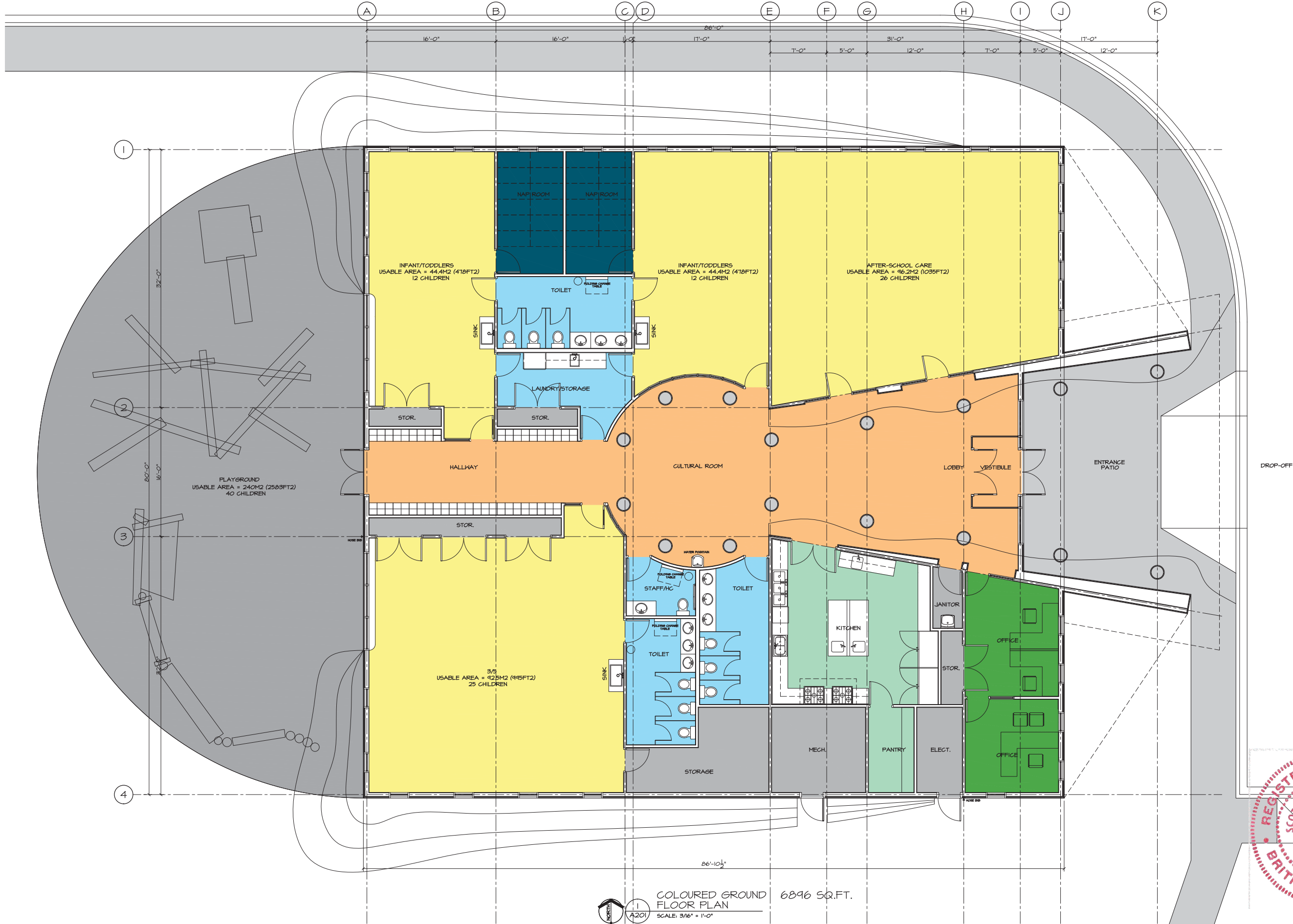
SITE PLAN



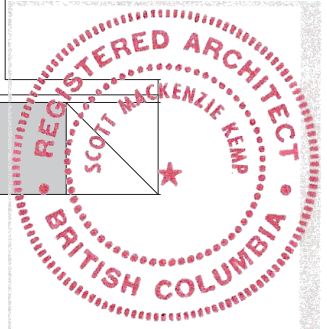
Lheidli T'enneh First Nation
Daycare in the Park
1450 Gorse Street, Prince George, BC

XX XX/21	ISSUED FOR DEVELOPMENT PERMIT	△
DRAWN ML	DATE OCT 20	
CHK'D SK	JOB No. -	
DESIGN	DRAWING No.	
CHK'D -		
SCALE AS SHOWN		

A102



COLOURED GROUND FLOOR PLAN 6896 SQ.FT.
SCALE: 3/16" = 1'-0"



Scott M. Kemp Architect
4427 River Road West, Ladner, BC V4K 1R9
P: (604) 786-8150 F: (604) 952-6021
scott@smkarchitect.com

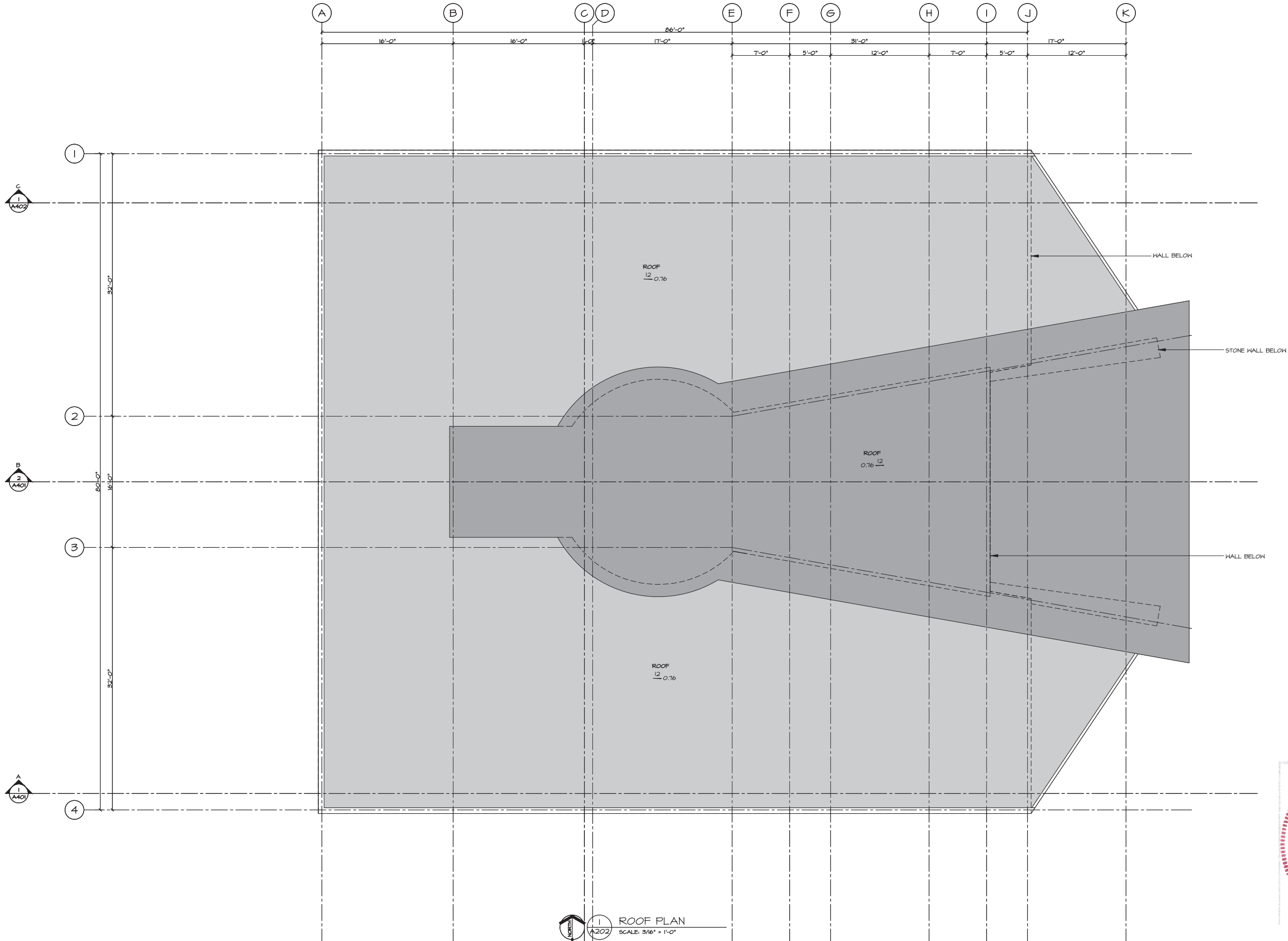
IDLPROJECTS
1088 Great Street
Prince George, B.C. V2N 2K8
Phone: (250) 649-0561
Fax: (250) 649-0581
E-mail: info@idprojects.com

TITLE:
FLOOR PLAN

Lheidli T'enneh
Lheidli T'enneh First Nation
Daycare in the Park
1450 Garvie Street, Prince George, BC

XX XX/21	ISSUED FOR DEVELOPMENT PERMIT	DATE MAY 2021
DRAWN ML	JOB No.	
CHKD SK	DRAWING No.	
DESIGN		
CHKD		
SCALE AS SHOWN		

A201



1
A202

ROOF PLAN
SCALE: 3/16" = 1'-0"



Scott M. Kemp Architect

4427 River Road West, Ladner, BC V4K 1R9
P: (604) 786-8150 F: (604) 952-6021
scott@smkarchitect.com



1088 Great Street
Prince George, B.C. V2N 2K8
Phone: (250) 649-0561
Fax: (250) 649-0561
E-mail: info@idprojects.com

TITLE:

ROOF PLAN

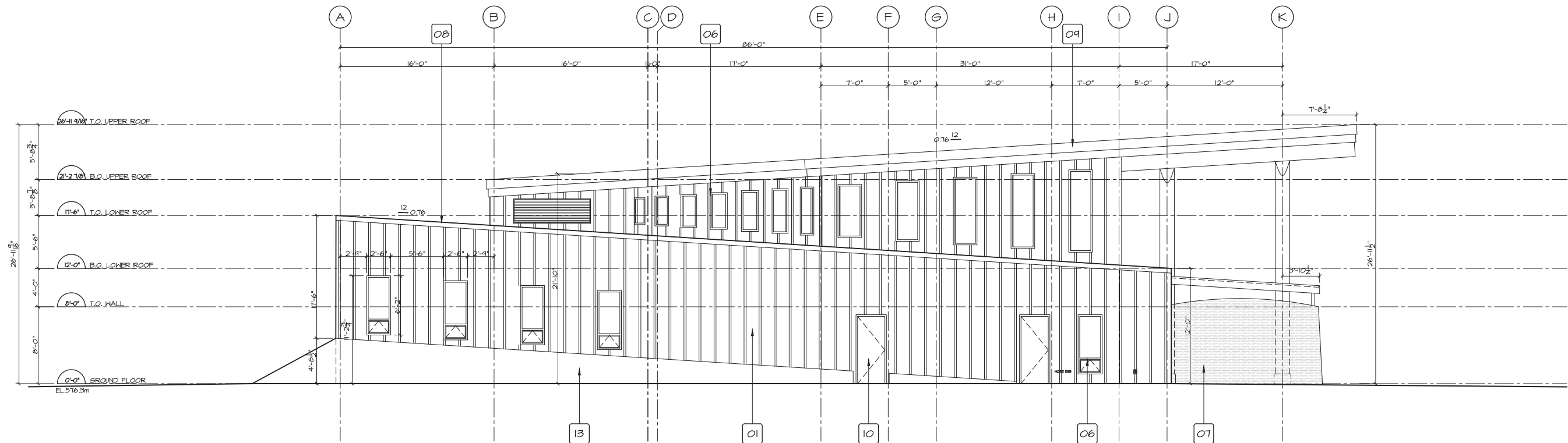


Lheidli T'enneh

Lheidli T'enneh First Nation
Daycare in the Park
1450 Garvie Street, Prince George, BC

XX XX/21	ISSUED FOR DEVELOPMENT PERMIT	DATE MAY 2021
DRAWN ML	JOB No.	DRAWING No.
CHKD SK		
DESIGN		
CHKD -		
SCALE AS SHOWN		

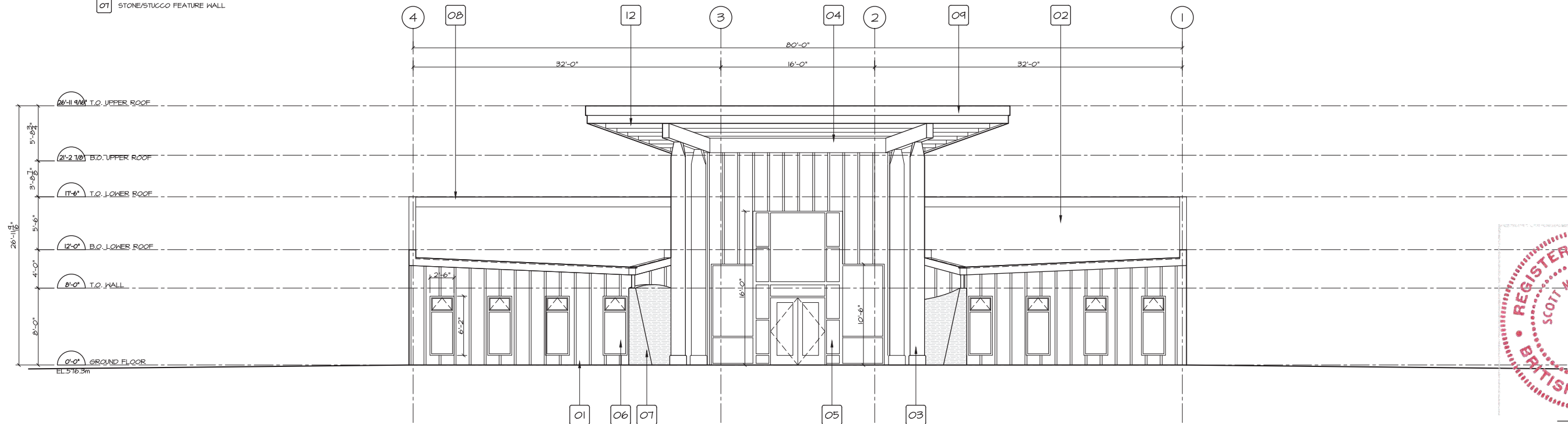
A208



1 SOUTH ELEVATION
SCALE: 3/16" = 1'-0"

EXTERIOR MATERIALS & FINISHES:

- 01 HARDIE PLANK BOARD & BATTEN
- 02 TORCH-DOWN ROOF MEMBRANE
- 03 TIMBER COLUMN (STAINED)
- 04 EXPOSED WOOD BEAM & RAFTER (STAINED)
- 05 DOUBLE GLAZED ALUM. STOREFRONT WINDOW
- 06 DOUBLE GLAZED VINYL FRAMED WINDOW
- 07 STONE/STUCCO FEATURE WALL
- 08 METAL CAP FLASHING
- 09 METAL FASCIA BOARD
- 10 INSULATED METAL DOOR & FRAME
- 11 INSULATED METAL DOUBLE DOOR
- 12 T&G WOOD SOFFIT
- 13 RAISED GRADE



Scott M. Kemp Architect

4427 River Road West, Ladner, BC V4K 1R9
P: (604) 786-8150 F: (604) 952-6021
scott@smkarchitect.com



1088 Great Street
Prince George, B.C. V2N 2K8
Phone: (250) 649-0561
Fax: (250) 649-0581
E-mail: info@idlprojects.com

TITLE:

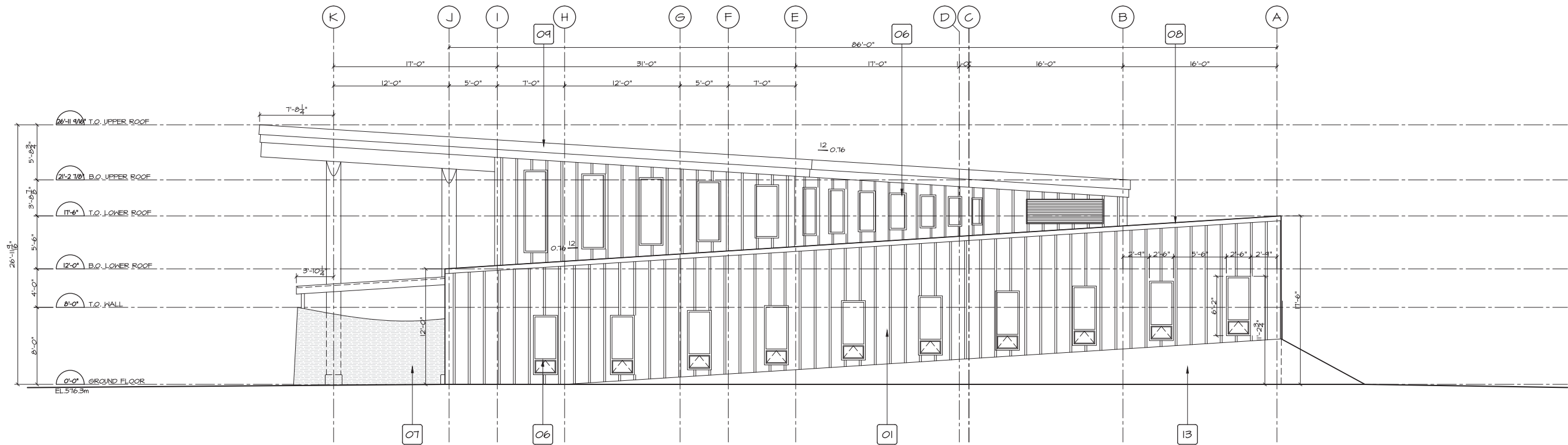
SOUTH AND EAST ELEVATIONS



Lheidli T'enneh First Nation
Daycare in the Park
1450 Garvie Street, Prince George, BC

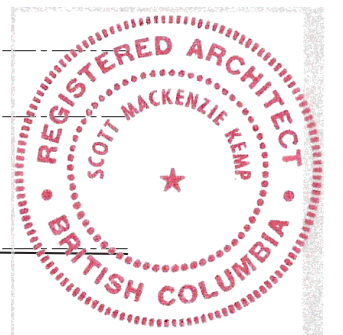
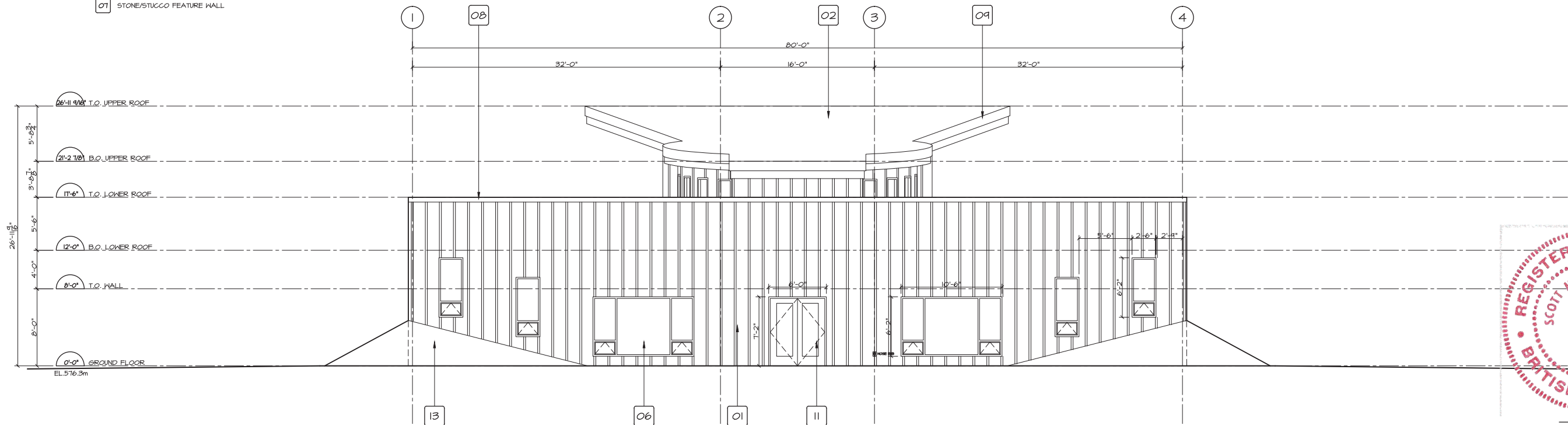
XX XX/21	ISSUED FOR DEVELOPMENT PERMIT	DATE MAY 2021
DRAWN ML	JOB No.	DRAWING No.
CHK'D SK		
DESIGN		
CHK'D -		
SCALE AS SHOWN		

A301



EXTERIOR MATERIALS & FINISHES:

- | | | | |
|----|---------------------------------------|----|------------------------------|
| 01 | HARDIE PLANK BOARD & BATTEN | 08 | METAL CAP FLASHING |
| 02 | TORCH-DOWN ROOF MEMBRANE | 09 | METAL FASCIA BOARD |
| 03 | TIMBER COLUMN (STAINED) | 10 | INSULATED METAL DOOR & FRAME |
| 04 | EXPOSED WOOD BEAM & RAFTER (STAINED) | 11 | INSULATED METAL DOUBLE DOOR |
| 05 | DOUBLE GLAZED ALUM. STOREFRONT WINDOW | 12 | T&G WOOD SOFFIT |
| 06 | DOUBLE GLAZED VINYL FRAMED WINDOW | 13 | RAISED GRADE |
| 07 | STONE/STUCCO FEATURE WALL | | |



Scott M. Kemp Architect

4427 River Road West, Ladner, BC V4K 1R9
P: (604) 786-8150 F: (604) 952-6021
scott@smkarchitect.com



1088 Great Street
Prince George, B.C. V2N 2K8
Phone: (250) 649-0561
Fax: (250) 649-0561
E-mail: info@idprojects.com

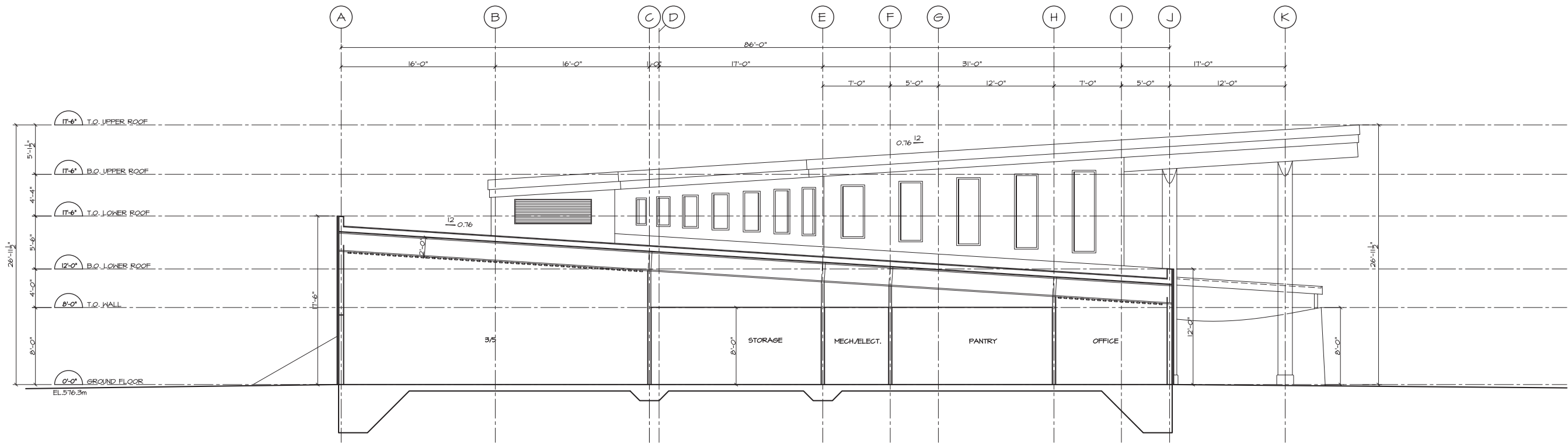
TITLE:

NORTH AND WEST ELEVATIONS

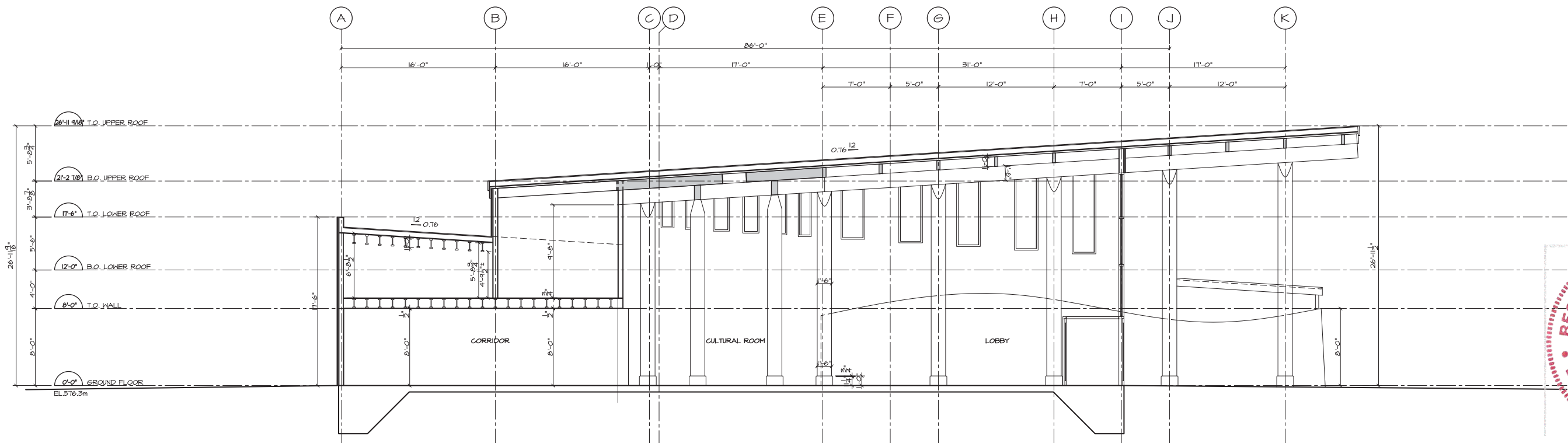


Lheidli T'enneh First Nation
Daycare in the Park
1450 Gorse Street, Prince George, BC

XX XX/21	ISSUED FOR DEVELOPMENT PERMIT	DATE MAY 2021
DRAWN ML	CHKD SK	JOB No. -
DESIGN ML	CHKD -	DRAWING No. A302
SCALE AS SHOWN		



1 SECTION A
SCALE: 3/16" = 1'-0"



2 SECTION B
SCALE: 3/16" = 1'-0"



Scott M. Kemp Architect
4427 River Road West, Ladner, BC V4K 1R9
P: (604) 786-8150 F: (604) 952-6021
scott@smkarchitect.com



TITLE:

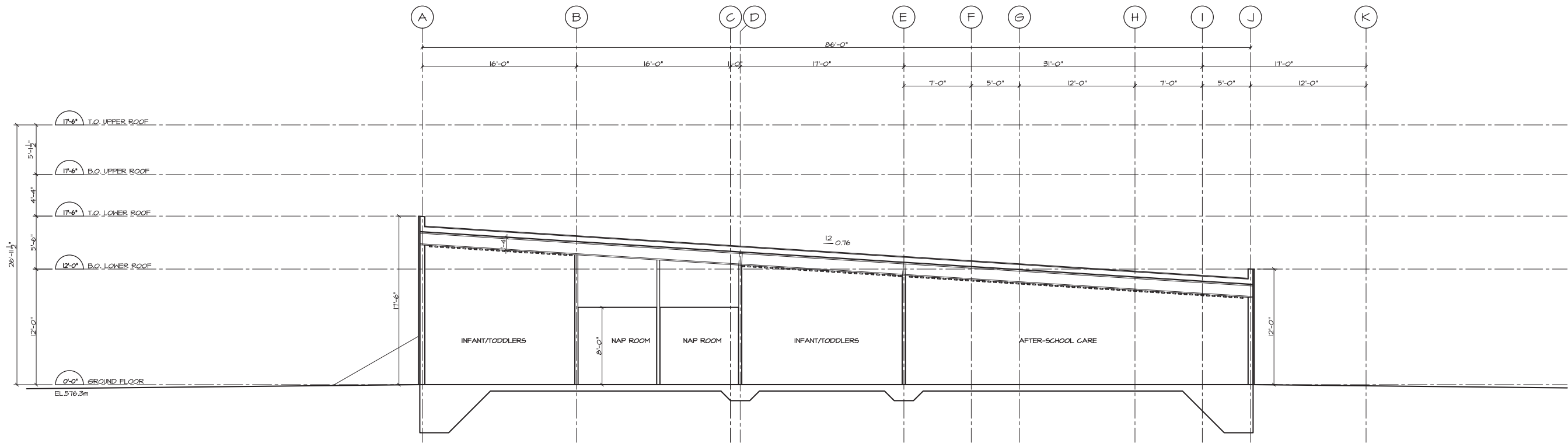
BUILDING SECTION A AND B



Lheidli T'enneh First Nation
Daycare in the Park
1950 Gorse Street, Prince George, BC

XX XX/21	ISSUED FOR DEVELOPMENT PERMIT	DATE MAY 2021
DRAWN ML	JOB No.	DRAWING No.
CHKD SK		
DESIGN		
CHKD		
SCALE AS SHOWN		

A401



1 SECTION C
A402 SCALE: 3/16" = 1'-0"



Scott M. Kemp Architect
4427 River Road West, Ladner, BC V4K 1R9
P: (604) 786-8150 F: (604) 952-6021
scott@smkarchitect.com

IDLPROJECTS
1088 Great Street
Prince George, B.C. V2N 2K8
Phone: (250) 649-0561
Fax: (250) 649-0581
E-mail: info@idprojects.com

TITLE:
BUILDING SECTION C

Lheidli T'enneh
Lheidli T'enneh First Nation
Daycare in the Park
1450 Garvie Street, Prince George, BC

XX XX/21	ISSUED FOR DEVELOPMENT PERMIT	DATE MAY 2021
DRAWN ML	CHK'D SK	JOB No. -
DESIGN	CHK'D -	DRAWING No. A402
SCALE AS SHOWN		

EXTERIOR MATERIALS & FINISHES:

- 01

HARDIE PLANK BOARD & BATTEN (LIGHT GREY)
- 02

TORCH-DOWN ROOF MEMBRANE (LIGHT GREY)
- 03

TIMBER COLUMN (STAINED)
- 04

EXPOSED GLULAM BEAM & RAFTER (STAINED)
- 05

DOUBLE GLAZED ALUM. STOREFRONT WINDOW (DARK GREY)
- 06

DOUBLE GLAZED VINYL FRAMED WINDOW (DARK GREY)
- 07

STONE/STUCCO FEATURE WALL (TO MIMIC CUTBANK)
- 08

METAL CAP FLASHING (DARK GREY)
- 09

METAL FASCIA BOARD (DARK GREY)
- 10

INSULATED METAL DOOR & FRAME (DARK GREY)
- 11

INSULATED METAL DOUBLE DOOR (DARK GREY)
- 12

T&G WOOD SOFFIT



HARDIE PLANK BOARD & BATTEN (LIGHT GREY)



TIMBER COLUMN, BEAM & RAFTER (STAINED) AND ALUMINIUM STOREFRONT



DOUBLE GLAZED VINYL FRAMED WINDOW (DARK GREY)



STONE/STUCCO FEATURE WALL (TO MIMIC CUTBANK)



METAL FASCIA BOARD (DARK GREY)



T&G WOOD SOFFIT

