

**CITY OF PRINCE GEORGE**  
**BYLAW NO. 9308, 2022**

**A Bylaw of the City of Prince George to permanently close a portion of road located adjacent to 2126 Tamarack Street and 2121 Spruce Street and to remove its road dedication for the purpose of future disposal of the lands.**

**WHEREAS** the Council of the City of Prince George deems it desirable that an approximate 415.4m<sup>2</sup> (square metres) of road dedicated on Block 1, Plan 5566, District Lot 777, Cariboo District, as shown on Reference Plan EPP119000 adjacent to the properties legally described as Lot B, District Lot 777, Cariboo District, Plan 8433 and Lot A, District Lot 777, Cariboo District, Plan 25301 be closed to traffic, and that the road dedication thereof be removed;

**AND WHEREAS**, in accordance with section 40 of the *Community Charter*, notice of intention to adopt this Bylaw has been delivered, posted and published, and an opportunity has been provided for persons who consider they are affected by this Bylaw to make representations to Council;

**NOW THEREFORE** the Council of the City of Prince George, in open meeting assembled, **ENACTS AS FOLLOWS:**

1. That the portion of road dedicated on Block 1, Plan 5566, District Lot 777, Cariboo District, as shown outlined in bold black on Reference Plan EPP119000, adjacent to the properties legally described as Lot B, District Lot 777, Cariboo District, Plan 8433 and Lot A, District Lot 777, Cariboo District, Plan 25301, attached hereto as Appendix "A" and forming part of this Bylaw, is closed to traffic.
2. That the portion of road dedicated on Block 1, Plan 5566, District Lot 777, Cariboo District, as shown outlined in bold black on Reference Plan EPP119000, adjacent to the properties legally described as Lot B, District Lot 777, Cariboo District, Plan 8433 and Lot A, District Lot 777, Cariboo District, Plan 25301, attached hereto as Appendix "A" and forming part of this Bylaw, is removed.
3. The Mayor and Corporate Officer are hereby empowered to do all things necessary to give effect to this Bylaw.
4. This Bylaw shall come into full force and take effect upon its adoption and shall be filed with the Registrar of the applicable Land Title Office.
5. That "City of Prince George Tamarack/Spruce Street Road Closure Bylaw No. 9241, 2021", is hereby repealed.
6. This Bylaw may be cited for all purposes as "City of Prince George Tamarack/Spruce Street Road Closure Bylaw No. 9308, 2022".

READ A FIRST TIME THIS 9<sup>TH</sup> DAY OF MAY, 2022.


READ A SECOND TIME THIS 9<sup>TH</sup> DAY OF MAY, 2022.

First two readings passed by a **UNANIMOUS** decision of Members of City Council present and eligible to vote.

READ A THIRD TIME THIS 27<sup>TH</sup> DAY OF JUNE, 2022.

Third reading passed by a **UNANIMOUS** decision of Members of City Council present and eligible to vote.

Certified correct as passed third reading this 11<sup>TH</sup> day of JULY, 2022.

  
CORPORATE OFFICER OF  
THE CITY OF PRINCE GEORGE

APPROVED BY THE MINISTER OF TRANSPORTATION AND INFRASTRUCTURE PURSUANT TO THE PROVISIONS OF SECTION 41(3) OF THE COMMUNITY CHARTER.

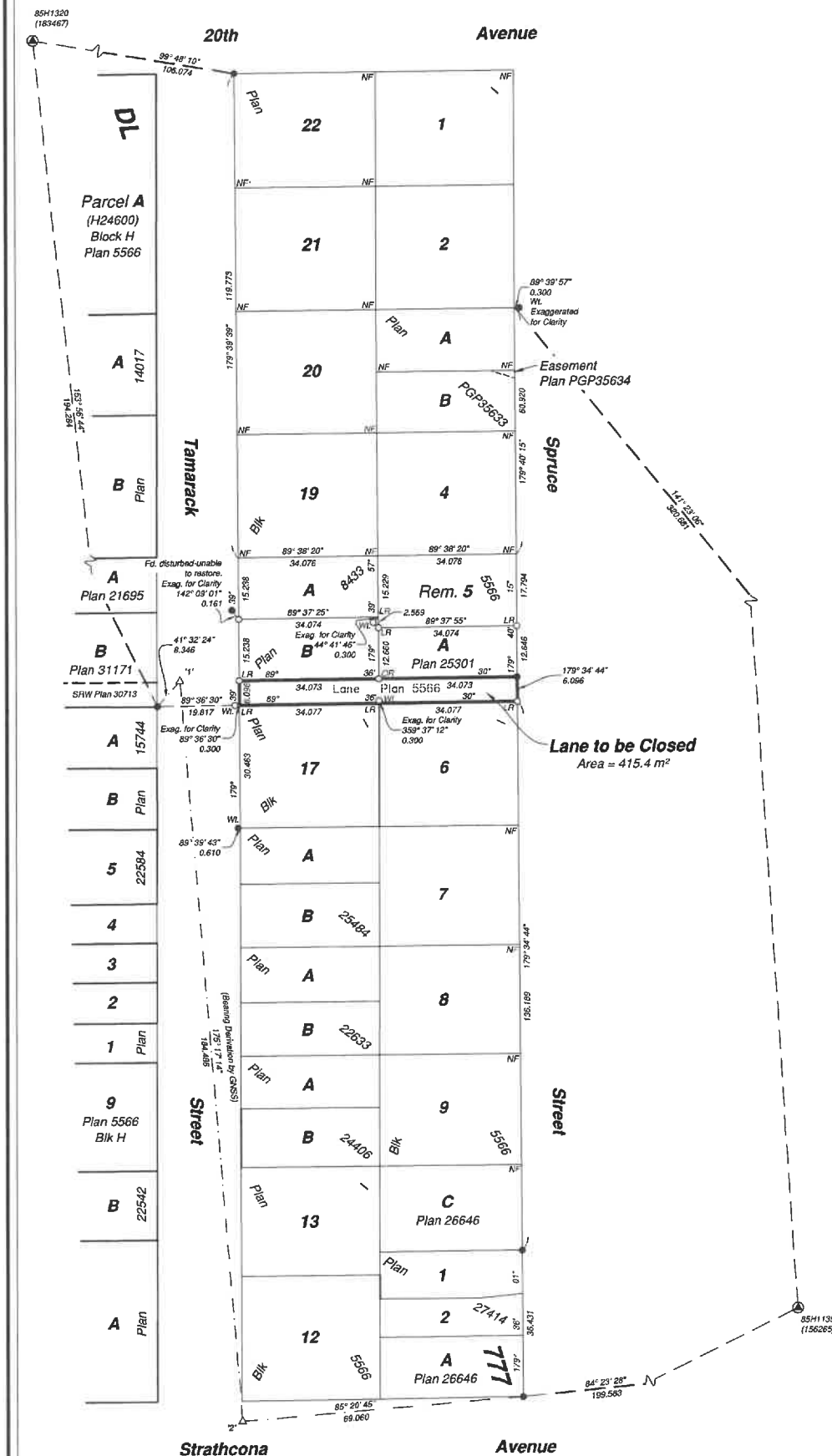
THIS 3RD DAY OF AUGUST, 2022.

  
for MINISTER OF TRANSPORTATION  
AND INFRASTRUCTURE

ADOPTED THIS DAY OF, 2022,  
BY A DECISION OF ALL MEMBERS OF CITY COUNCIL PRESENT AND  
ELIGIBLE TO VOTE.

\_\_\_\_\_  
MAYOR

\_\_\_\_\_  
CORPORATE OFFICER



**Reference Plan to Accompany  
By-Law No. 9308 (City of Prince  
George), Closing a Portion of Lane  
Shown Dedicated in Block I, Plan 5566,  
District Lot 777, Cariboo District**

Pursuant to Section 120 of the Land Title Act and Section 40 of the  
Community Charter

Integrated survey area No. 39 Prince George, BC, NAD83 (CSRS) 4.0.0.BC.1

BCGS 93G.097



The intended plot size of this plan is 432mm in width by 580mm in height (C size) when plotted at a scale of 1:750.

All distances are in metres and decimals thereof.

Grid bearings are derived from GNSS observations and are referred to the central meridian of UTM Zone 10 North (123° west longitude).

This plan shows horizontal ground level distances unless otherwise specified. To compute grid distances, multiply ground-level distances by the combined factor of 0.9995157 which has been derived by single point positioning techniques using the precise point positioning (PPP) services of Natural Resources Canada. The average combined factor has been determined based on an adjusted ellipsoidal elevation of 558.1 metres.

The UTM coordinates and estimated absolute accuracies shown on this plan are a result of an independent and accurate GNSS survey.

Positions for Geodetic Control Monuments which are calculated from information on this plan may not agree with official published coordinates.

Note:  
This plan shows one or more witness posts which are not set on the true corner(s).

Some posts are exaggerated for clarity. Reference Posts set with all placed Standard Iron Posts.

**Legend**

Found	Placed	Description
⊙	⊙	Control Monument
●	○	Standard Iron Post
△	△	Traverse Hub
CSF		Combined Scale Factor
EAA		Estimated Absolute Accuracy
SRW		Statutory Right of Way
LR		Lost Re-established
OR		Obliterated Restored
Blk		Block
Wt.		Witness
Exag.		Exaggerated

Georeferencing Positions UTM Coordinates, Zone 10, NAD 83 (CSRS), 2002.0				
Station	Northing	Easting	EAA	CSF
1	5972862.87	515813.88	0.05	0.9995157
2	5972879.10	515829.03	0.05	0.9995168



The field survey represented by this plan was  
completed on the 24th day of February, 2022

Albert Koehler, BCLS 974

This plan lies within the City of Prince George

This plan lies within the Regional District of Fraser Fort-George

File: 220325-22017-GRD-RC

KOEHLER LAND SURVEYING INC.  
674 - 2nd Avenue  
Prince George, BC V2L 3A2  
Tel: (250) 614-9703